



SunLong Biotech Co.,LTD
Tel: 0086-571- 56623320 Fax:0086-571- 56623318
E-mail:sales@sunlongbiotech.com
www.sunlongbiotech.com

[KD-Validated] Anti-IFIH1 Rabbit Monoclonal Antibody

Cat No.: KD-10485

Aliases:

IFIH1; Interferon Induced With Helicase C Domain 1; MDA-5; MDA5; Helicard; IDDM19; Interferon-Induced Helicase C Domain-Containing Protein 1; Clinically Amyopathic Dermatomyositis Autoantigen 140 KDa; Melanoma Differentiation-Associated Protein 5; Melanoma Differentiation-Associated Gene 5; RNA Helicase-DEAD Box Protein 116; Murabutide Down-Regulated Protein; Helicase With 2 CARD Domains; RIG-I-Like Receptor; CADM-140 Autoantigen; RLR-2; Hlcd; Interferon-Induced With Helicase C Domain Protein 1; DEAD/H (Asp-Glu-Ala-Asp/His) Box Polypeptide; EC 3.6.4.13; SGMRT1; IMD95; RH116; AGS7; HLCD

Background:

UniProt Entry: [Q9BYX4](#);NCBI Gene Entry: [64135](#)

Application Information

Molecular Weight: Predicted, 117 kDa, observed, 140 kDa Clonality: Rabbit monoclonal antibody Clone ID: 24GB6085 Species Reactivity: Human, Mouse, Rat Applications Tested: Western Blotting (WB), Immunocytochemistry (IC)

Immunogen

A synthesized peptide derived from human MDA5

Isotype

Rabbit IgG

Storage Buffer

Supplied in PBS (pH 7.4) containing 50% glycerol, and 0.02% sodium azide.

Storage

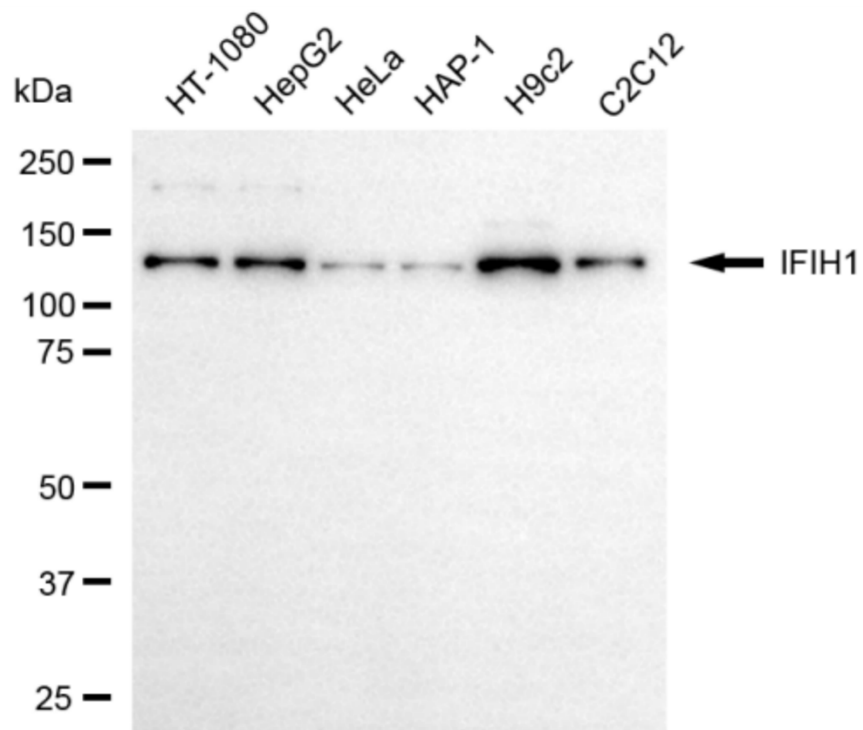
Store at -20 °C for one year.

Recommended Dilutions

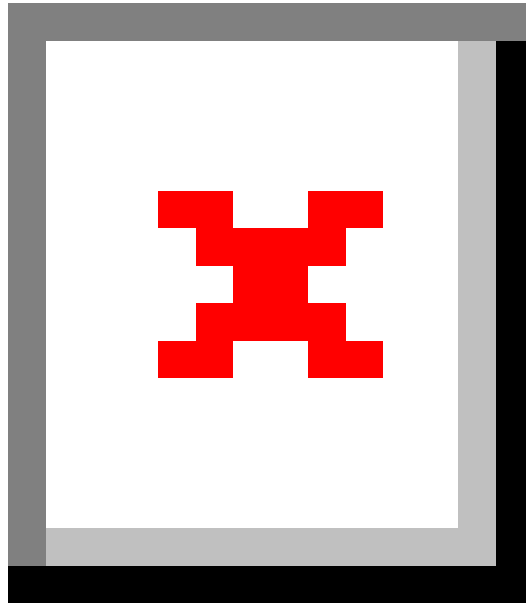
Western Blotting (WB): 1:1,000-1:5,000 Immunocytochemistry (IC): 1:1,000

Protocols

For general and specific antibody protocols please visit our website. Read all instructions before using this product.



Western blotting analysis using anti-IFIH1 antibody 1:5,000 and HRP-conjugated goat anti-rabbit secondary antibody 1:20,000 respectively. Image was developed using FeQ™ ECL Substrate Kit .



Western blotting analysis using anti-IFIH1 antibody 1:5,000 and HRP-conjugated goat anti-rabbit secondary antibody 1:20,000 respectively. Image was developed using NaQ™ ECL Substrate Kit 1:1,000. Nuclei were stained blue with DAPI; IFIH1 was stained magenta with Alexa Fluor® 647. Images were taken using Leica stellaris 5. Protein abundance based on laser Intensity and smart gain: Medium. Scale bar: 20 μm .