



SunLong Biotech Co.,LTD  
Tel: 0086-571- 56623320 Fax:0086-571- 56623318  
E-mail:sales@sunlongbiotech.com  
www.sunlongbiotech.com

## **[KD-Validated] Anti-IDH1 Rabbit Monoclonal Antibody**

Cat No.: KD-10484

### **Aliases:**

IDH1; Isocitrate Dehydrogenase (NADP(+)) 1; Isocitrate Dehydrogenase (NADP(+)) 1, Cytosolic; Isocitrate Dehydrogenase 1 (NADP+), Soluble; Isocitrate Dehydrogenase [NADP] Cytoplasmic; Oxalosuccinate Decarboxylase; NADP(+)-Specific ICDH; EC 1.1.1.42; PICD; IDH; NADP-Dependent Isocitrate Dehydrogenase, Peroxisomal; NADP-Dependent Isocitrate Dehydrogenase, Cytosolic; Epididymis Secretory Sperm Binding Protein; Cytosolic NADP-Isocitrate Dehydrogenase; Isocitrate Dehydrogenase 1 (NADP+); Epididymis Secretory Protein Li 26; Epididymis Luminal Protein 216; HEL-S-26; HEL-216; IDCD; IDPC; IDPc; IDP

### **Background:**

UniProt Entry: [O75874](#);NCBI Gene Entry: [3417](#)

### **Application Information**

Molecular Weight: Predicted, 47 kDa, observed, 45 kDa Clonality: Rabbit monoclonal antibody Clone ID: 23GB2105 Species Reactivity: Human, Mouse, Rat Applications Tested: Western Blotting (WB), Flow Cytometry (FCM)

### **Immunogen**

A synthesized peptide derived from human IDH1

### **Isotype**

Rabbit IgG

### Storage Buffer

Supplied in PBS (pH 7.4) containing 50% glycerol, and 0.02% sodium azide.

### Storage

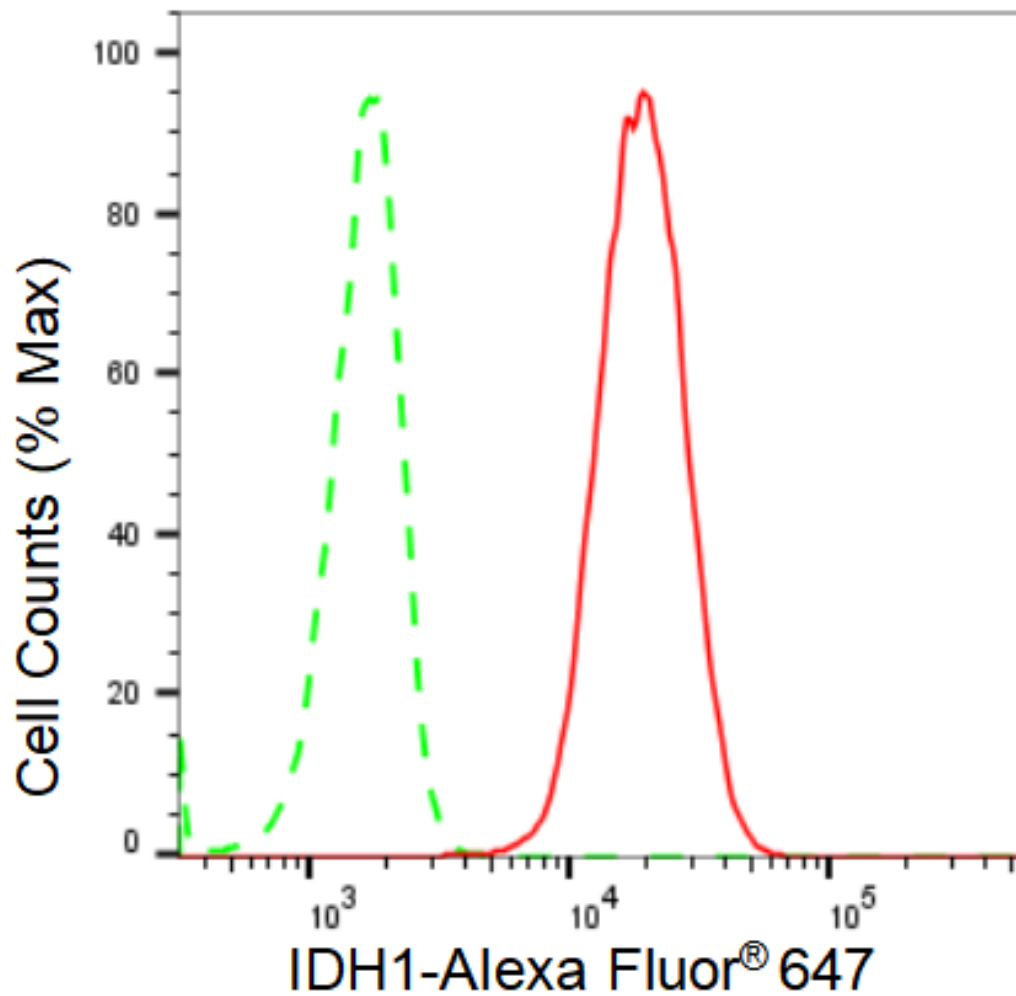
Store at -20 °C for one year.

### Recommended Dilutions

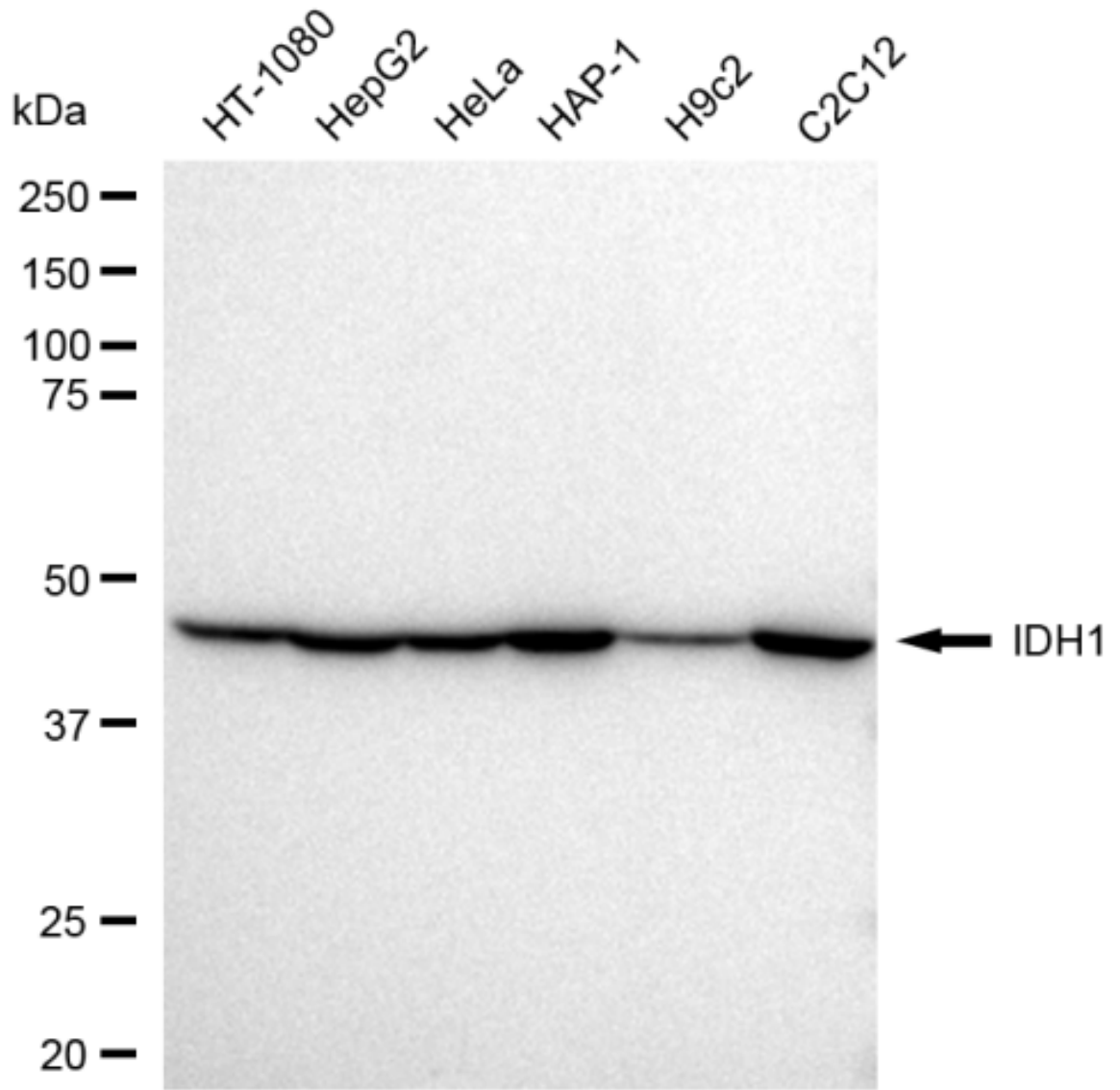
Western Blotting (WB): 1:1,000-1:5,000 Flow Cytometry (FCM): 1:2,000

### Protocols

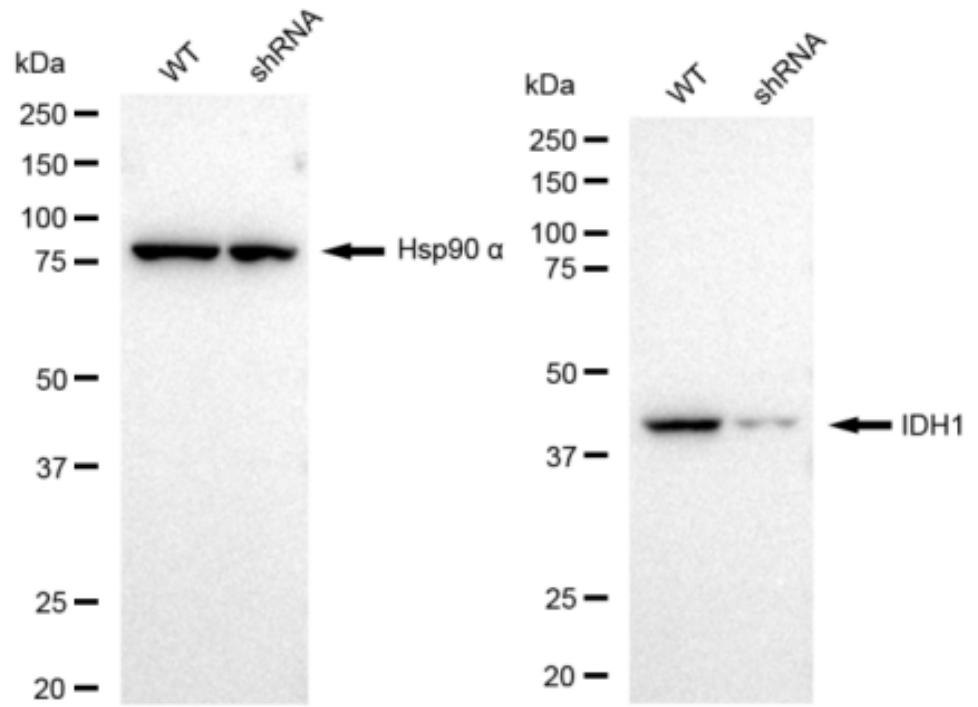
For general and specific antibody protocols please visit our website. Read all instructions before using this product.



Flow cytometric analysis of IDH1 expression in C2C12 cells using IDH1 antibody 1:2,000. Green, isotype control; red, IDH1.



Western blotting analysis using anti-IDH1 antibody 1:5,000 and HRP-conjugated goat anti-rabbit secondary antibody 1:20,000 respectively. Image was developed using FeQ™ ECL Substrate Kit .



Western blotting analysis using anti-IDH1 antibody 1:5,000 and HRP-conjugated goat anti-rabbit secondary antibody 1:20,000 respectively. Image was developed using FeQ™ ECL Substrate Kit .