



SunLong Biotech Co.,LTD
Tel: 0086-571- 56623320 Fax:0086-571- 56623318
E-mail:sales@sunlongbiotech.com
www.sunlongbiotech.com

[KD-Validated] Anti-Hsp105 Rabbit Monoclonal Antibody

Cat No.: KD-10480

Aliases:

HSPH1; Heat Shock Protein Family H (Hsp110) Member 1; KIAA0201; NY-CO-25; HSP105B; HSP105A; Heat Shock 105kDa/110kDa Protein 1; Heat Shock Protein 105 KDa; Antigen NY-CO-25; HSP105; Heat Shock 110 KDa Protein; HSP110

Background:

UniProt Entry: [Q92598](#);NCBI Gene Entry: [10808](#)

Application Information

Molecular Weight: Predicted, 97 kDa, observed, 105 kDa Clonality: Rabbit monoclonal antibody Clone ID: 23GB6190 Species Reactivity: Human, Mouse, Rat Applications Tested: Western Blotting (WB), Flow Cytometry (FCM)

Immunogen

A synthesized peptide derived from human Hsp105

Isotype

Rabbit IgG

Storage Buffer

Supplied in PBS (pH 7.4) containing 50% glycerol, and 0.02% sodium azide.

Storage

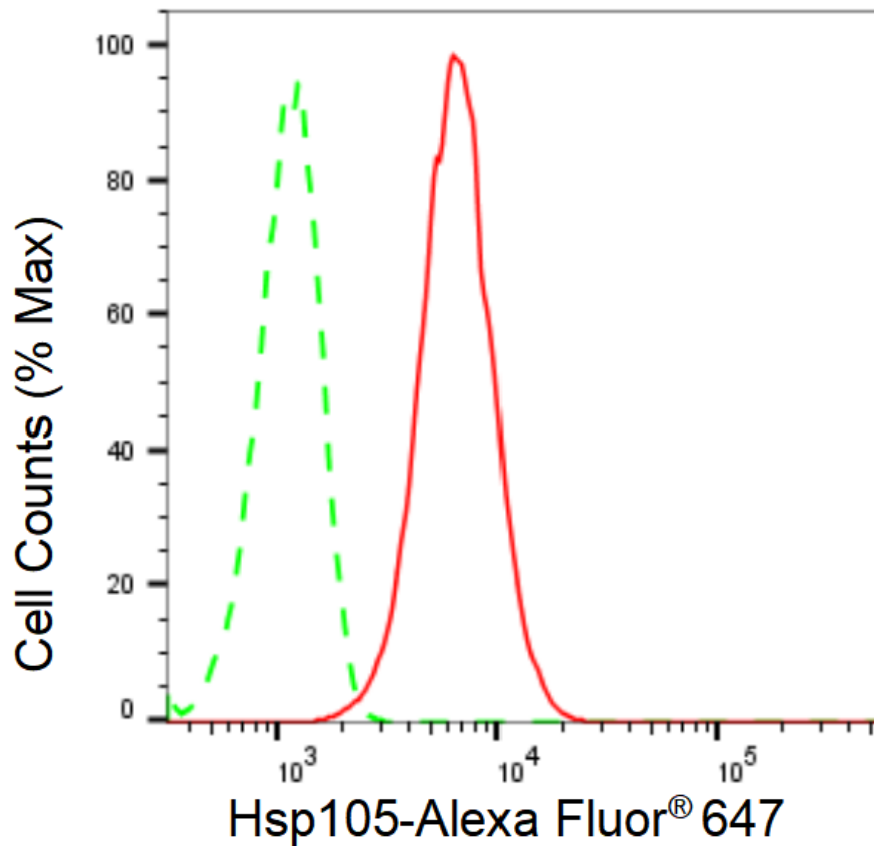
Store at -20 °C for one year.

Recommended Dilutions

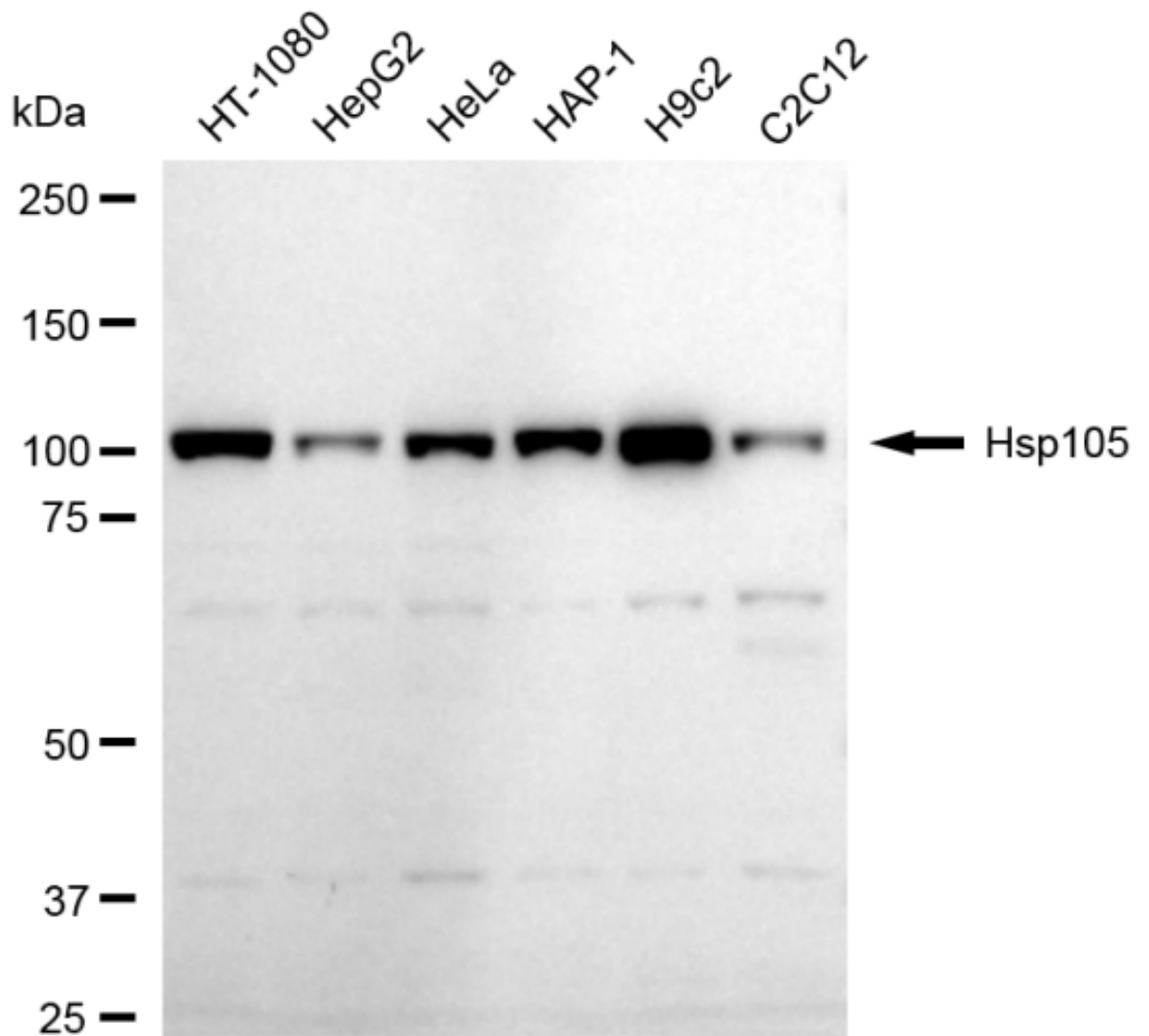
Western Blotting (WB): 1:1,000-1:5,000 Flow Cytometry (FCM): 1:2,000

Protocols

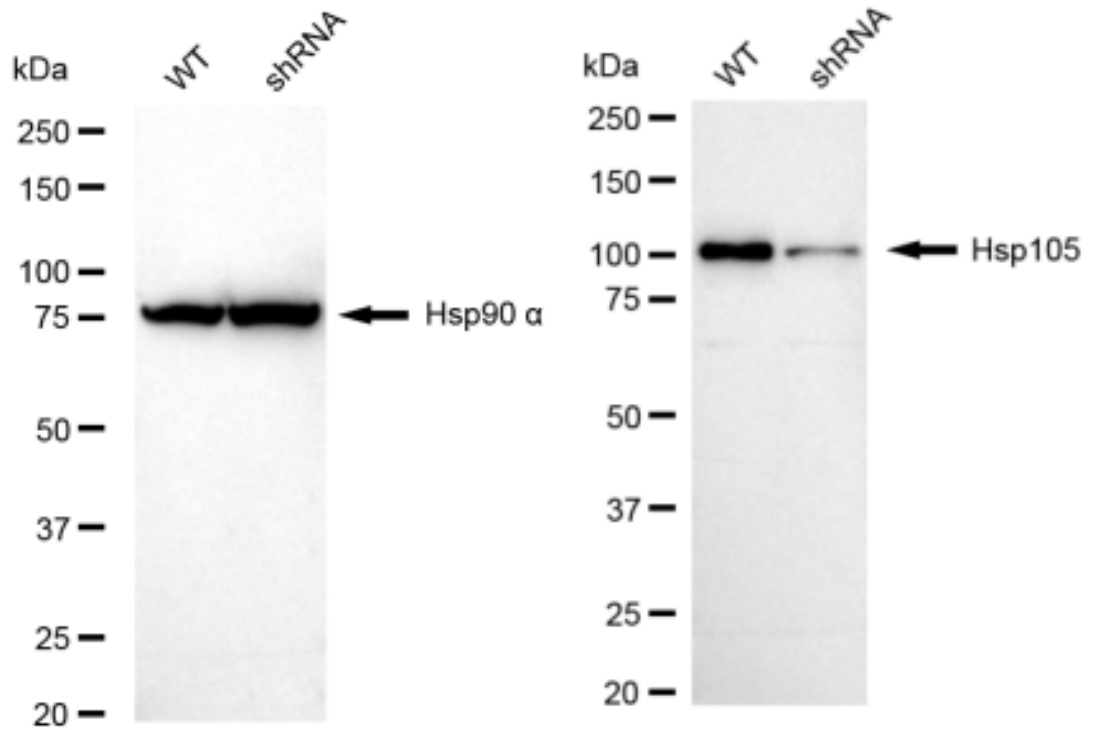
For general and specific antibody protocols please visit our website. Read all instructions before using this product.



Flow cytometric analysis of Hsp105 expression in HT-1080 cells using Hsp105 antibody 1:2,000. Green, isotype control; red, Hsp105.



Western blotting analysis using anti-Hsp105 antibody 1:5,000 and HRP-conjugated goat anti-rabbit secondary antibody 1:20,000 respectively. Image was developed using FeQ™ ECL Substrate Kit .



Western blotting analysis using anti-Hsp105 antibody 1:5,000 and HRP-conjugated goat anti-rabbit secondary antibody 1:20,000 respectively. Image was developed using FeQ™ ECL Substrate Kit .