



SunLong Biotech Co.,LTD  
Tel: 0086-571- 56623320 Fax:0086-571- 56623318  
E-mail:sales@sunlongbiotech.com  
www.sunlongbiotech.com

## **[KD-Validated] Anti-Hsp22 Rabbit Monoclonal Antibody**

Cat No.: KD-10479

### **Aliases:**

HSPB8; Heat Shock Protein Family B (Small) Member 8; E2IG1; HSP22; CMT2L; H11; Small Stress Protein-Like Protein HSP22; Heat Shock 27kDa Protein 8; Heat Shock 22kDa Protein 8; Heat Shock Protein Beta-8; E2-Induced Gene 1 Protein; Alpha-Crystallin C Chain; Protein Kinase H11; HSPB8-N1; HSPB8-N2; DHMN2; HMN2A; CRYAC; HspB8; HMN2

### **Background:**

UniProt Entry: [Q9UJY1](#);NCBI Gene Entry: [26353](#)

### **Application Information**

Molecular Weight: Predicted, 22 kDa, observed, 22 kDa Clonality: Rabbit monoclonal antibody Clone ID: 23GB1980 Species Reaceivity: Human, Mouse Applicseions Tsted: Western Blotting (WB), Flow Cytometry (FCM), Immunocytochemistry (IC)

### **Immunogen**

A synthesized peptide derived from human HSPB8/HSP22

### **Isotype**

Rabbit IgG

### **Storage Buffer**

Supplied in PBS (pH 7.4) containing 50% glycerol, and 0.02% sodium azide.

#### Storage

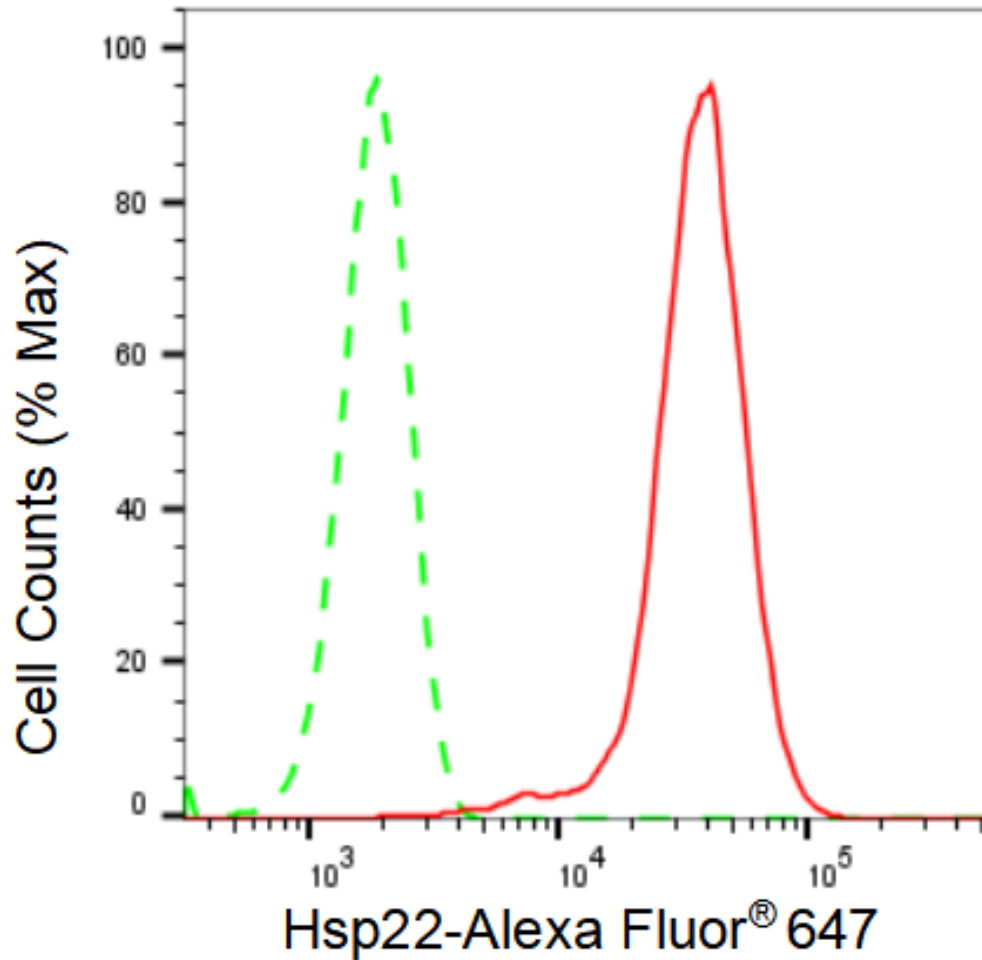
Store at -20 °C for one year.

#### Recommended Dilutions

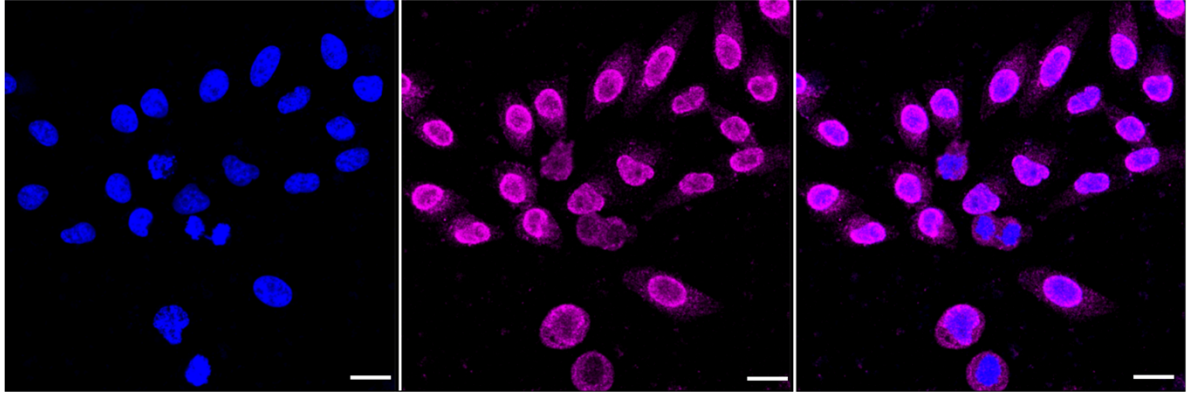
Western Blotting (WB): 1:1,000-1:2,500 Flow Cytometry (FCM): 1:2,000  
Immunocytochemistry (IC): 1:1,000

#### Protocols

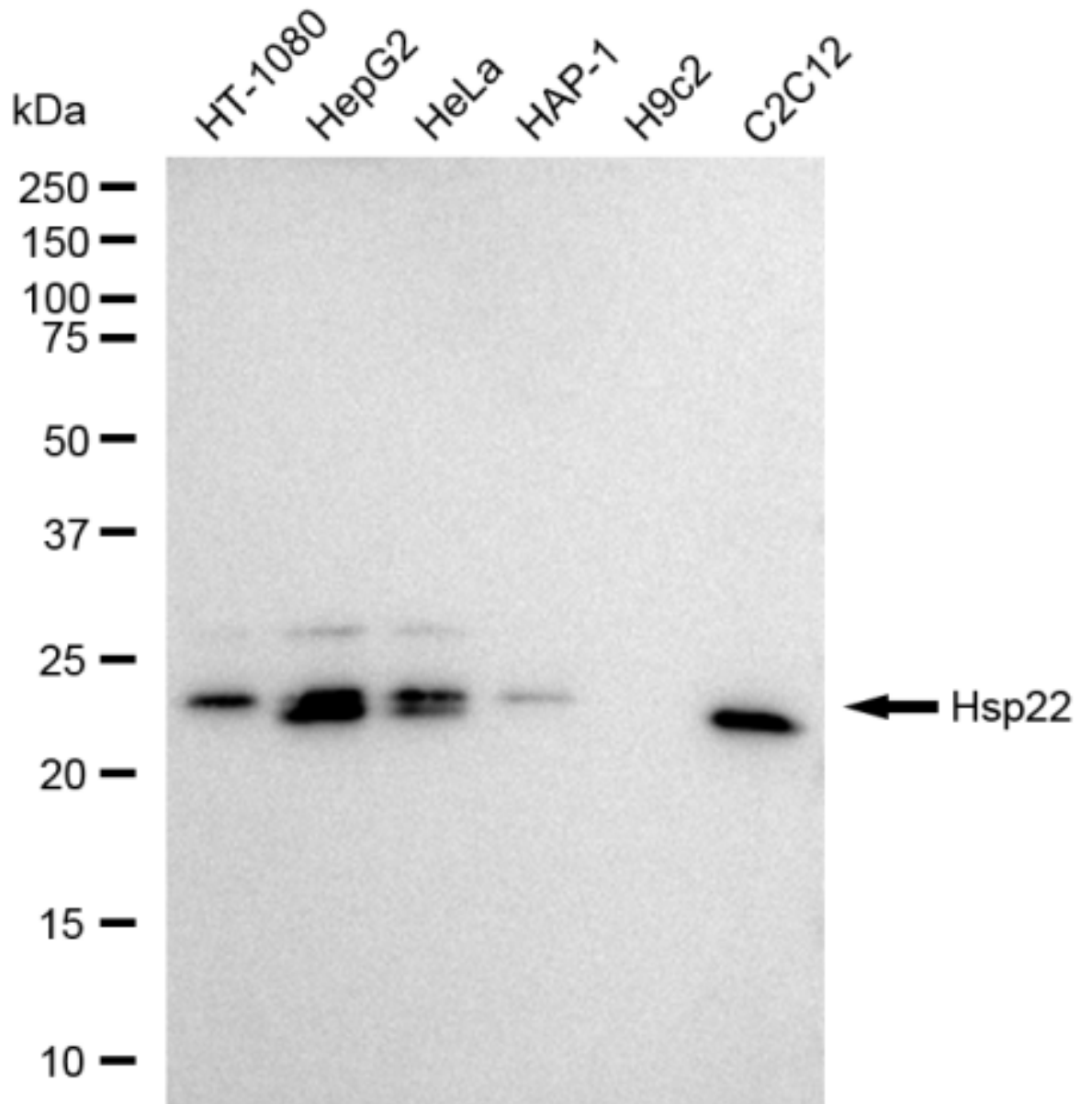
For general and specific antibody protocols please visit our website. Read all instructions before using this product.



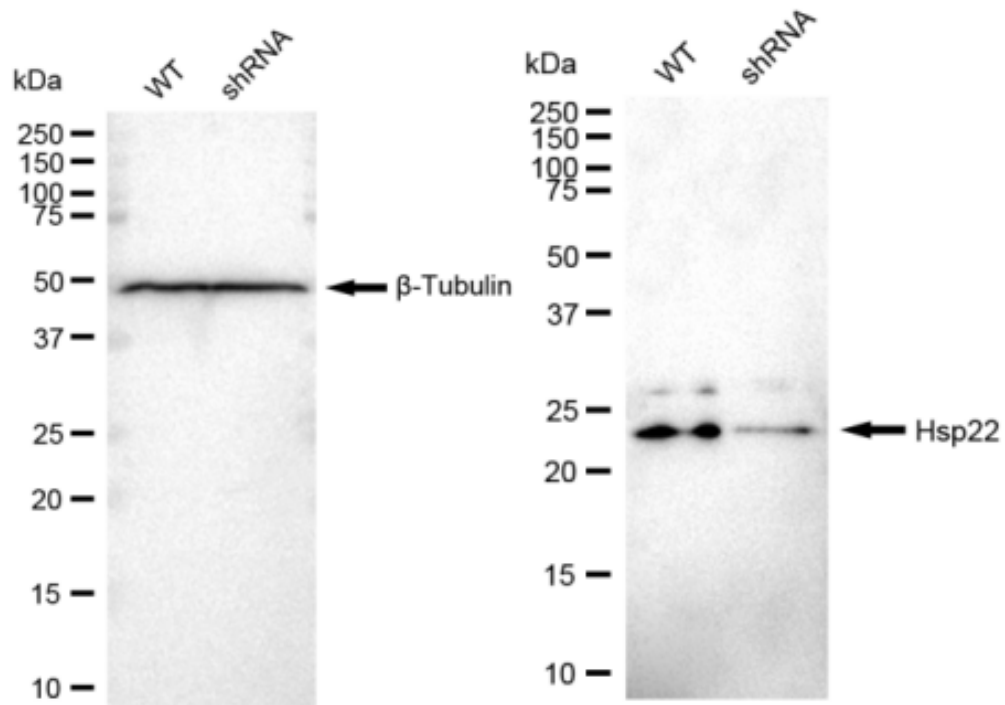
Flow cytometric analysis of Hsp22 expression in HepG2 cells using Hsp22 antibody 1:2,000. Green, isotype control; red, Hsp22.



Immunocytochemical staining of HepG2 cells with Hsp22 antibody 1:1,000. Nuclei were stained blue with DAPI; Hsp22 was stained magenta with Alexa Fluor® 647. Images were taken using Leica stellaris 5. Protein abundance based on laser Intensity and smart gain: Medium. Scale bar: 20  $\mu$ m.



Western blotting analysis using anti-Hsp22 antibody 1:2,500 and HRP-conjugated goat anti-rabbit secondary antibody 1:20,000 respectively. Image was developed using FeQ™ ECL Substrate Kit .



Western blotting analysis using anti-Hsp22 antibody 1:5,000 and HRP-conjugated goat anti-rabbit secondary antibody 1:20,000 respectively. Image was developed using FeQ™ ECL Substrate Kit .