



SunLong Biotech Co.,LTD
Tel: 0086-571- 56623320 Fax:0086-571- 56623318
E-mail:sales@sunlongbiotech.com
www.sunlongbiotech.com

[KD-Validated] Anti-Hsp90 beta Rabbit Monoclonal Antibody

Cat No.: KD-10475

Aliases:

HSP90AB1; Heat Shock Protein 90 Alpha Family Class B Member 1; HSPC2; HSPCB; Heat Shock Protein 90kDa Alpha (Cytosolic), Class B Member 1; Heat Shock 90kD Protein 1, Beta; Heat Shock Protein HSP 90-Beta; Heat Shock 84 KDa; HSP90B; HSP84; Heat Shock Protein 90kDa Alpha Family Class B Member 1; Heat Shock 90kDa Protein 1, Beta; Heat Shock Protein 90 KDa; HSP90-Beta; D6S182; HSP 90; HSP 84

Background:

UniProt Entry: [P08238](#);NCBI Gene Entry: [3326](#)

Application Information

Molecular Weight: Predicted, 83 kDa, observed, 90 kDa Clonality: Rabbit monoclonal antibody Clone ID: 23GB2770 Species Reactivity: Human, Mouse, Rat Applications Tested: Western Blotting (WB), Flow Cytometry (FCM), Immunocytochemistry (IC)

Immunogen

A synthesized peptide derived from human Hsp90 beta

Isotype

Rabbit IgG

Storage Buffer

Supplied in PBS (pH 7.4) containing 50% glycerol, and 0.02% sodium azide.

Storage

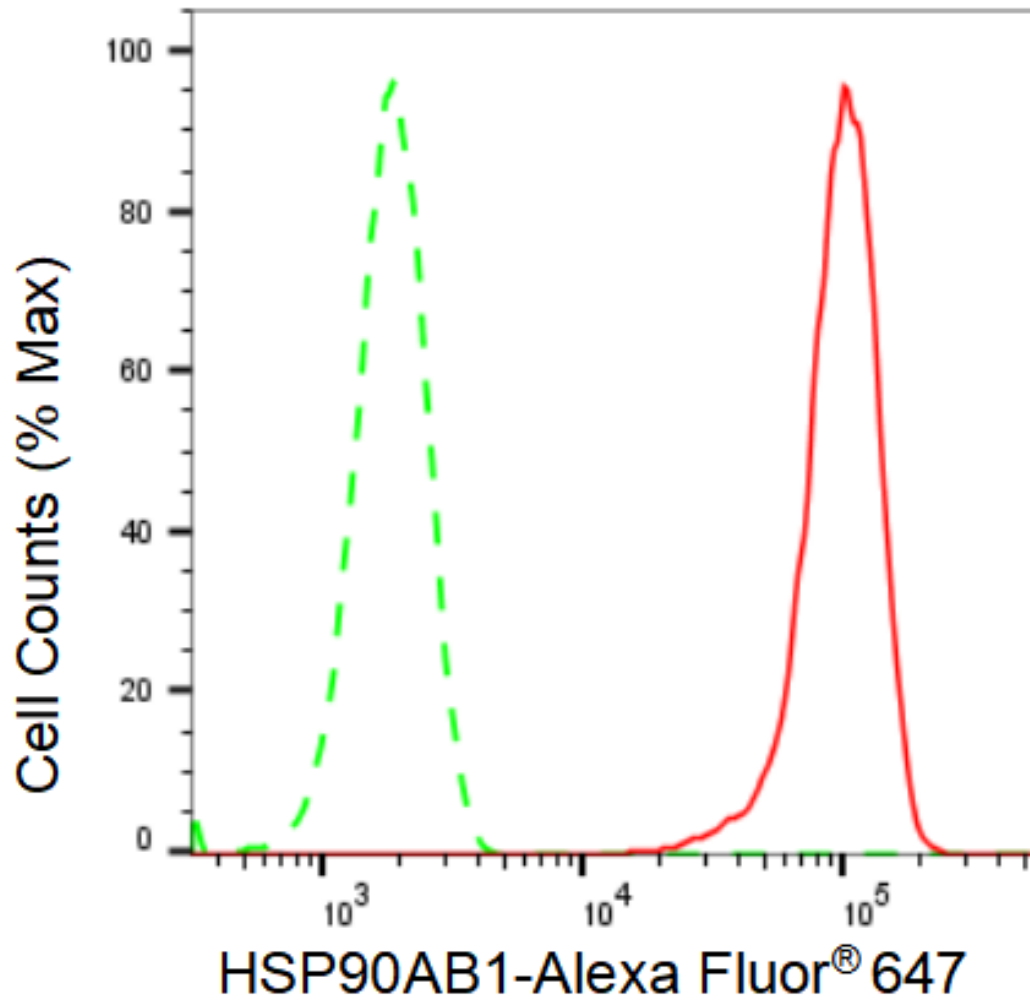
Store at -20 °C for one year.

Recommended Dilutions

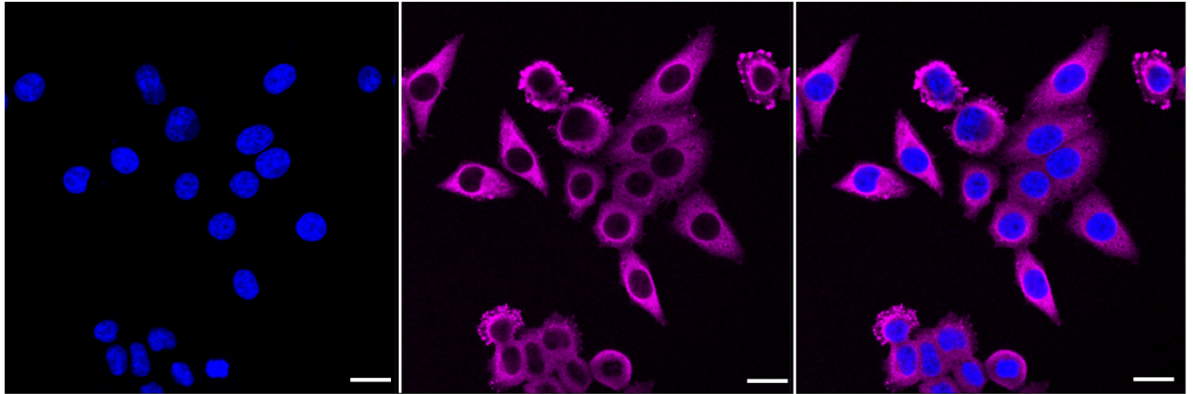
Western Blotting (WB): 1:1,000-1:5,000 Flow Cytometry (FCM): 1:2,000
Immunocytochemistry (IC): 1:1,000

Protocols

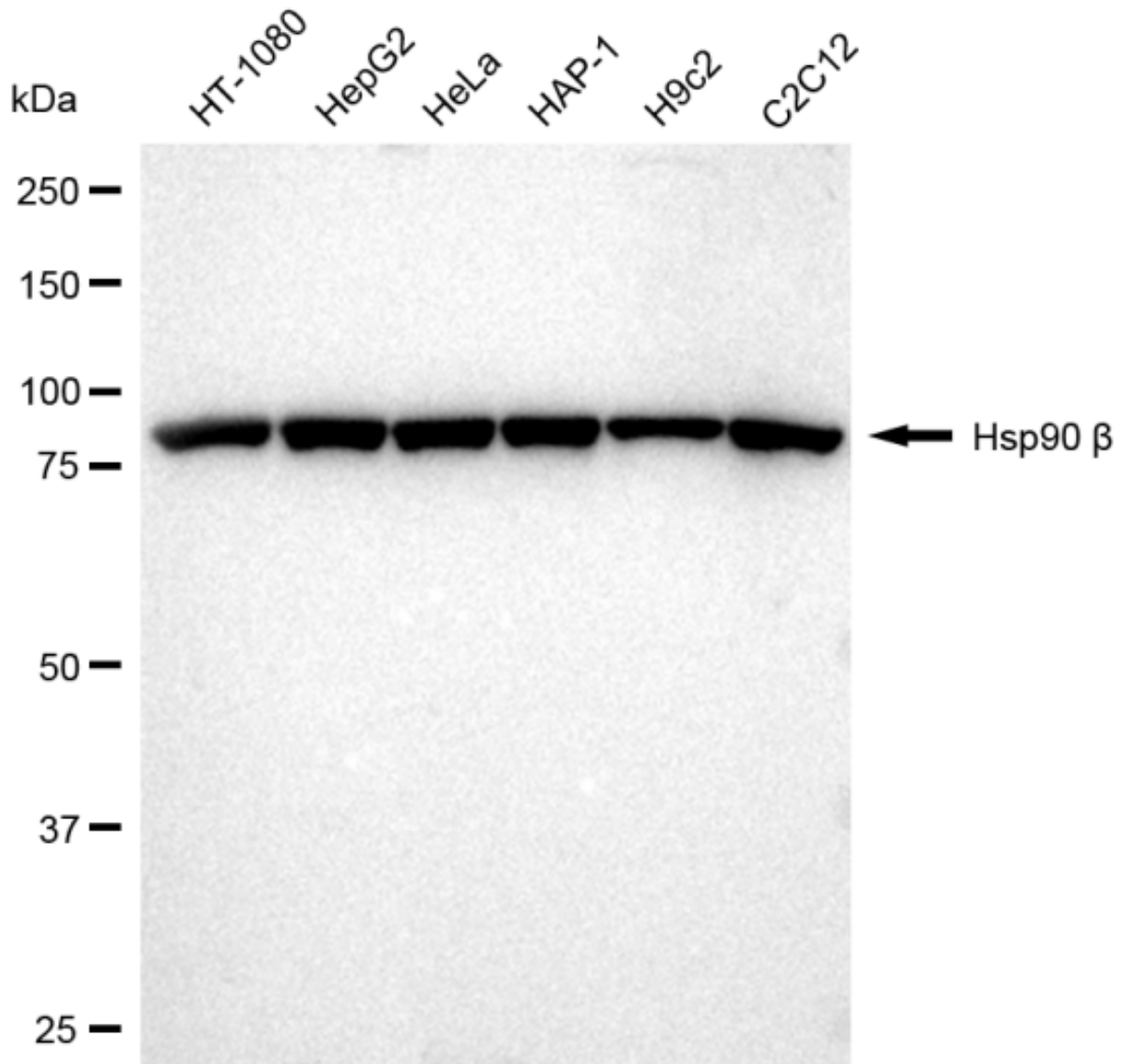
For general and specific antibody protocols please visit our website. Read all instructions before using this product.



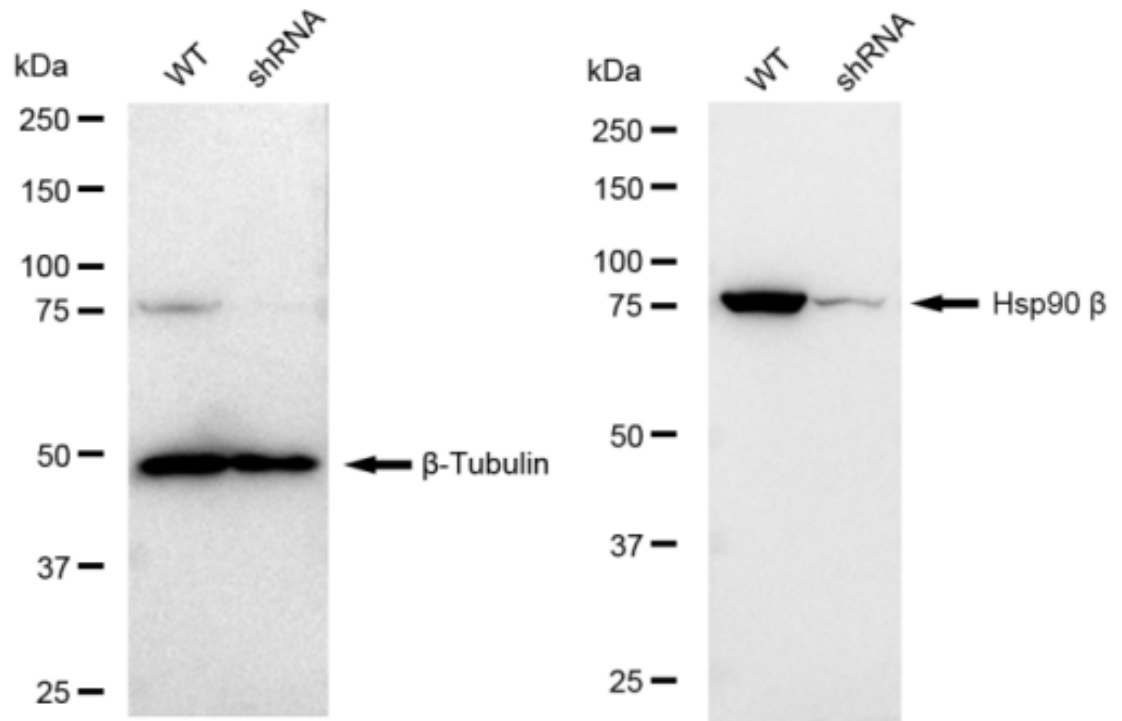
Flow cytometric analysis of HSP90AB1 expression in HepG2 cells using HSP90AB1 antibody 1:2,000. Green, isotype control; red, HSP90AB1.



Immunocytochemical staining of HepG2 cells with Hsp90 beta antibody 1:1,000. Nuclei were stained blue with DAPI; Hsp90 beta was stained magenta with Alexa Fluor® 647. Images were taken using Leica stellaris 5. Protein abundance based on laser Intensity and smart gain: Medium. Scale bar: 20 μ m.



Western blotting analysis using anti-Hsp90 beta antibody 1:5,000 and HRP-conjugated goat anti-rabbit secondary antibody 1:20,000 respectively. Image was developed using FeQ™ ECL Substrate Kit .



Western blotting analysis using anti-Hsp90 beta antibody 1:5,000 and HRP-conjugated goat anti-rabbit secondary antibody 1:20,000 respectively. Image was developed using FeQ™ ECL Substrate Kit .