



SunLong Biotech Co.,LTD
Tel: 0086-571- 56623320 Fax:0086-571- 56623318
E-mail:sales@sunlongbiotech.com
www.sunlongbiotech.com

[KD-Validated] Anti-Phospho-HSF1 (Ser303/Ser307) Rabbit Monoclonal Antibody

Cat No.: KD-10473

Aliases:

HSF1; Heat Shock Transcription Factor 1; HSTF1; Heat Shock Factor Protein 1; HSTF;
HSF

Background:

UniProt Entry: [Q00613](#);NCBI Gene Entry: [3297](#)

Application Information

Molecular Weight: Predicted, 57 kDa, observed, 73 kDa Clonality: Rabbit monoclonal
antibody Clone ID: 24GB5445 Species Reactivity: Human Applications Used: Western
Blotting (WB), Flow Cytometry (FCM)

Immunogen

A synthesized peptide derived from human Phospho-HSF1 (Ser303/Ser307)

Isotype

Rabbit IgG

Storage Buffer

Supplied in PBS (pH 7.4) containing 50% glycerol, and 0.02% sodium azide.

Storage

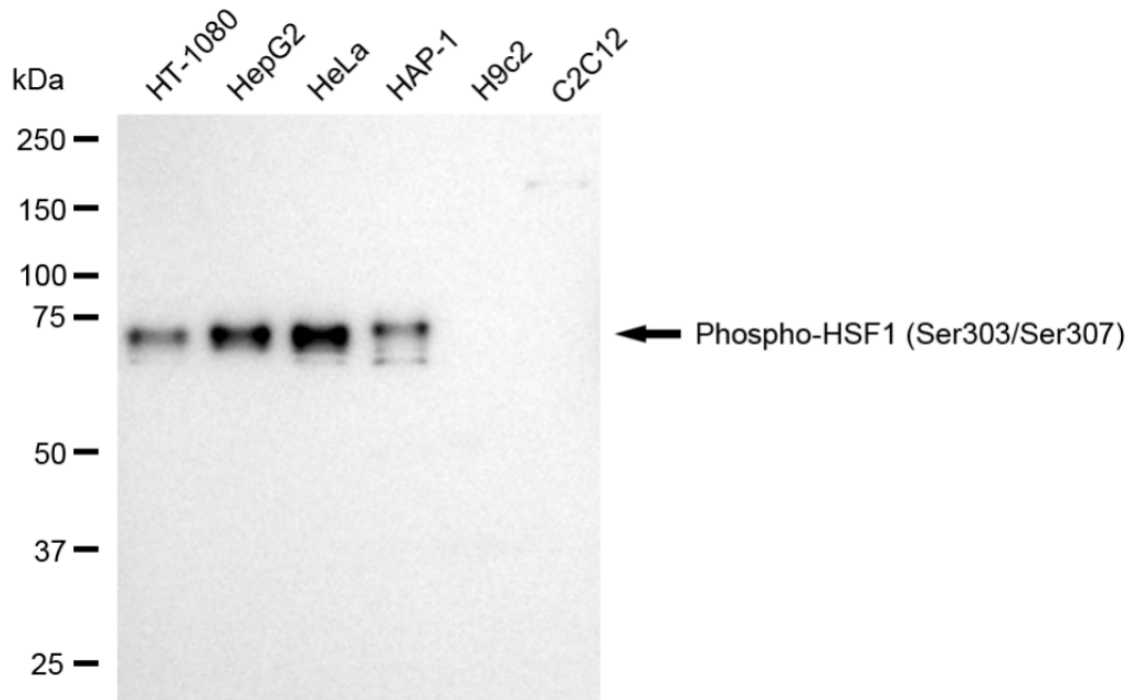
Store at -20 °C for one year.

Recommended Dilutions

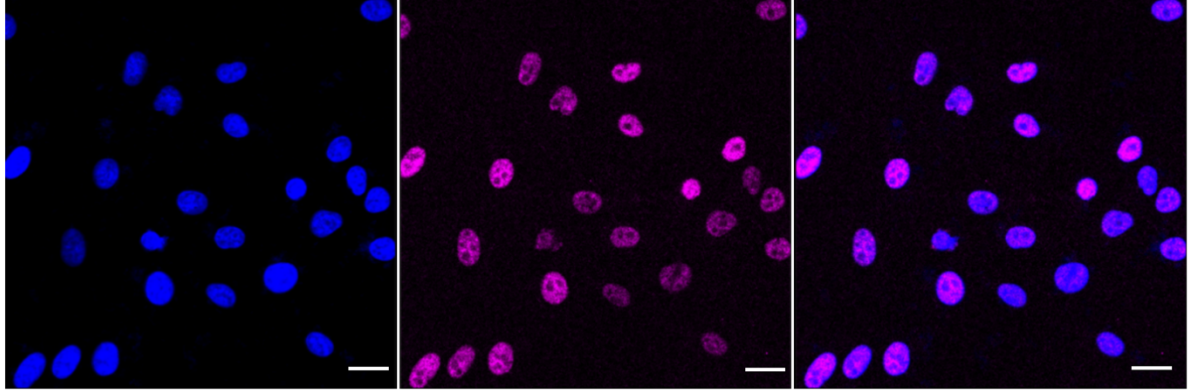
Western Blotting (WB): 1:1,000-1:5,000 Flow Cytometry (FCM): 1:2,000

Protocols

For general and specific antibody protocols please visit our website. Read all instructions before using this product.



Western blotting analysis using anti-phospho-HSF1 (Ser303/Ser307) antibody 1:5,000 and HRP-conjugated goat anti-rabbit secondary antibody 1:20,000 respectively. Image was developed using NaQ™ ECL Substrate Kit 1:5,000 and HRP-conjugated goat anti-rabbit secondary antibody 1:20,000 respectively. Image was developed using NaQ™ ECL Substrate Kit 1:2,000. Green, isotype control; red, Phospho-HSF1 (Ser303/Ser307).



Immunocytochemical staining of HepG2 cells with anti-phospho-HSF1 (Ser303/Ser307) antibody 1:1,000. Nuclei were stained blue with DAPI; Phospho-HSF1 (Ser303/Ser307) was stained magenta with Alexa Fluor® 647. Images were taken using Leica stellaris 5. Protein abundance based on laser Intensity and smart gain: Medium. Scale bar: 20 μm .