



SunLong Biotech Co.,LTD  
Tel: 0086-571- 56623320 Fax:0086-571- 56623318  
E-mail:sales@sunlongbiotech.com  
www.sunlongbiotech.com

## [KD-Validated] Anti-Heat Shock Transcription Factor 1 Rabbit Monoclonal Antibody

Cat No.: KD-10472

### Aliases:

HSF1; Heat Shock Transcription Factor 1; HSTF1; Heat Shock Factor Protein 1; HSTF;  
HSF

### Background:

UniProt Entry: [Q00613](#);NCBI Gene Entry: [3297](#)

### Application Information

Molecular Weight: Predicted, 57 kDa, observed, 75 kDa Clonality: Rabbit monoclonal  
antibody Clone ID: 24GB5405 Species Reactivity: Human Applications Used: Western  
Blotting (WB), Flow Cytometry (FCM)

### Immunogen

A synthesized peptide derived from human HSF1

### Isotype

Rabbit IgG

### Storage Buffer

Supplied in PBS (pH 7.4) containing 50% glycerol, and 0.02% sodium azide.

### Storage

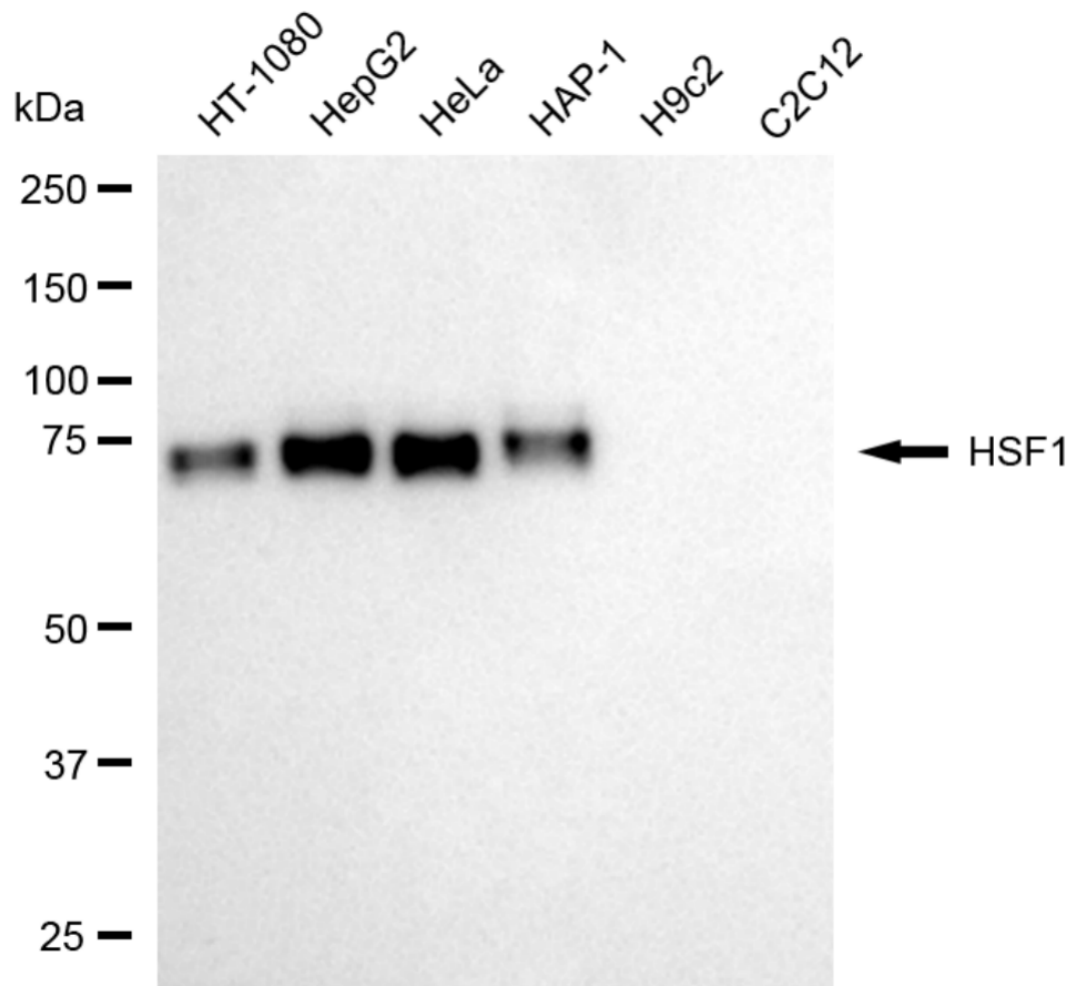
Store at -20 °C for one year.

**Recommended Dilutions**

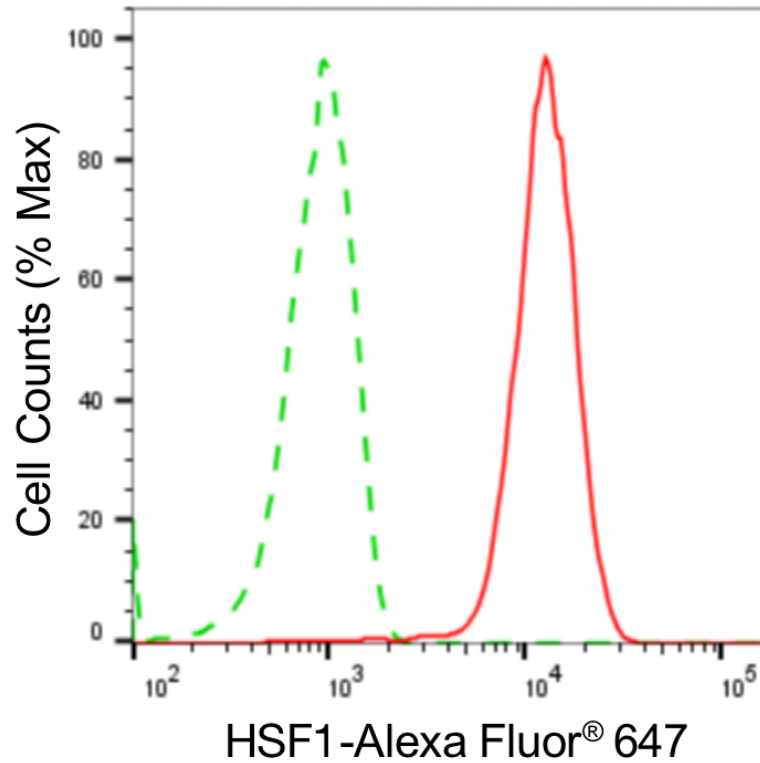
Western Blotting (WB): 1:1,000-1:5,000 Flow Cytometry (FCM): 1:2,000

**Protocols**

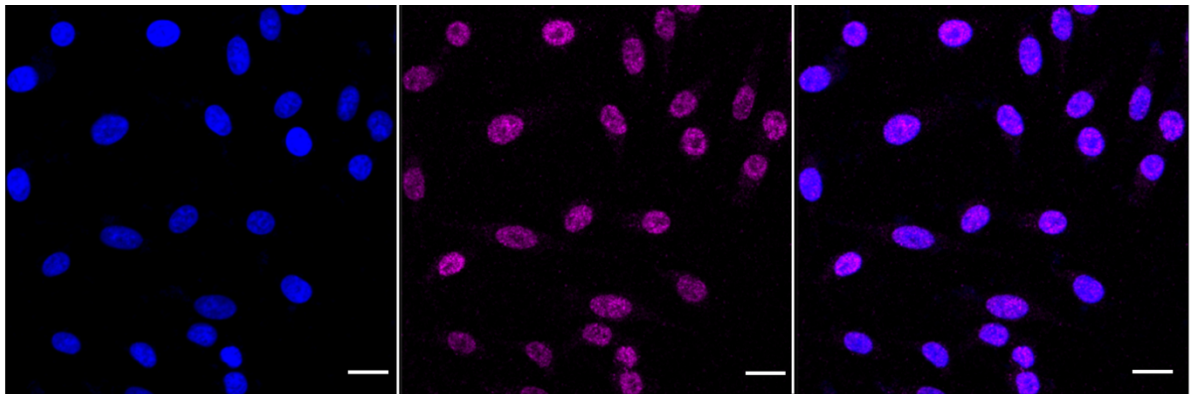
For general and specific antibody protocols please visit our website. Read all instructions before using this product.



Western blotting analysis using anti-HSF1 antibody 1:5,000 and HRP-conjugated goat anti-rabbit secondary antibody 1:20,000 respectively. Image was developed using NaQ™ ECL Substrate Kit 1:5,000 and HRP-conjugated goat anti-rabbit secondary antibody 1:20,000 respectively. Image was developed using FeQ™ ECL Substrate Kit .



Flow cytometric analysis of HSF1 expression in HepG2 cells using anti-HSF1 antibody 1:2,000. Green, isotype control; red, HSF1.



Immunocytochemical staining of HepG2 cells with anti-HSF1 antibody 1:1,000. Nuclei were stained blue with DAPI; HSF1 was stained magenta with Alexa Fluor® 647. Images were taken using Leica stellaris 5. Protein abundance based on laser Intensity and smart gain: Medium. Scale bar: 20  $\mu\text{m}$ .