



SunLong Biotech Co.,LTD
Tel: 0086-571- 56623320 Fax:0086-571- 56623318
E-mail:sales@sunlongbiotech.com
www.sunlongbiotech.com

[KD-Validated] Anti-HRAS Rabbit Monoclonal Antibody

Cat No.: KD-10467

Aliases:

HRAS; HRas Proto-Oncogene, GTPase; HRAS1; V-Ha-Ras Harvey Rat Sarcoma Viral Oncogene Homolog; Harvey Rat Sarcoma Viral Oncogene Homolog; Transforming Protein P21; GTPase HRas; P21ras; Ras Family Small GTP Binding Protein H-Ras; Harvey Rat Sarcoma Viral Oncoprotein; Transformation Gene: Oncogene HAMS SV; GTP- And GDP-Binding Peptide B; Ha-Ras1 Proto-Oncoprotein; C-Has/Bas P21 Protein; P19 H-RasIDX Protein; EC 3.6.5.2; C-BAS/HAS; C-HA-RAS1; H-RASIDX; C-H-RAS; H-Ras-1; C-H-Ras; Ha-Ras; HAMS SV; RASH1; CTLO

Background:

UniProt Entry: [P01112](#);NCBI Gene Entry: [3265](#)

Application Information

Molecular Weight: Predicted, 21 kDa, observed, 19 kDa Clonality: Rabbit monoclonal antibody Clone ID: 23GB6035 Species Reactivity: Human, Mouse, Rat Applications Tested: Western Blotting (WB), Flow Cytometry (FCM)

Immunogen

A synthesized peptide derived from human GTPase HRAS

Isotype

Rabbit IgG

Storage Buffer

Supplied in PBS (pH 7.4) containing 50% glycerol, and 0.02% sodium azide.

Storage

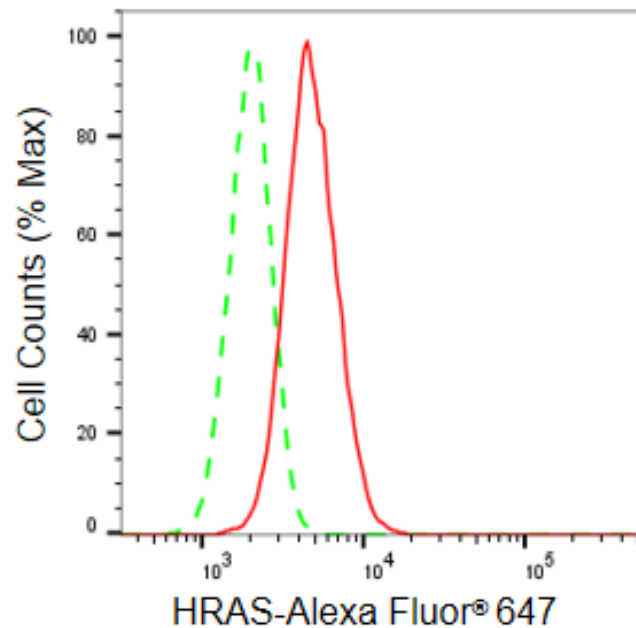
Store at -20 °C for one year.

Recommended Dilutions

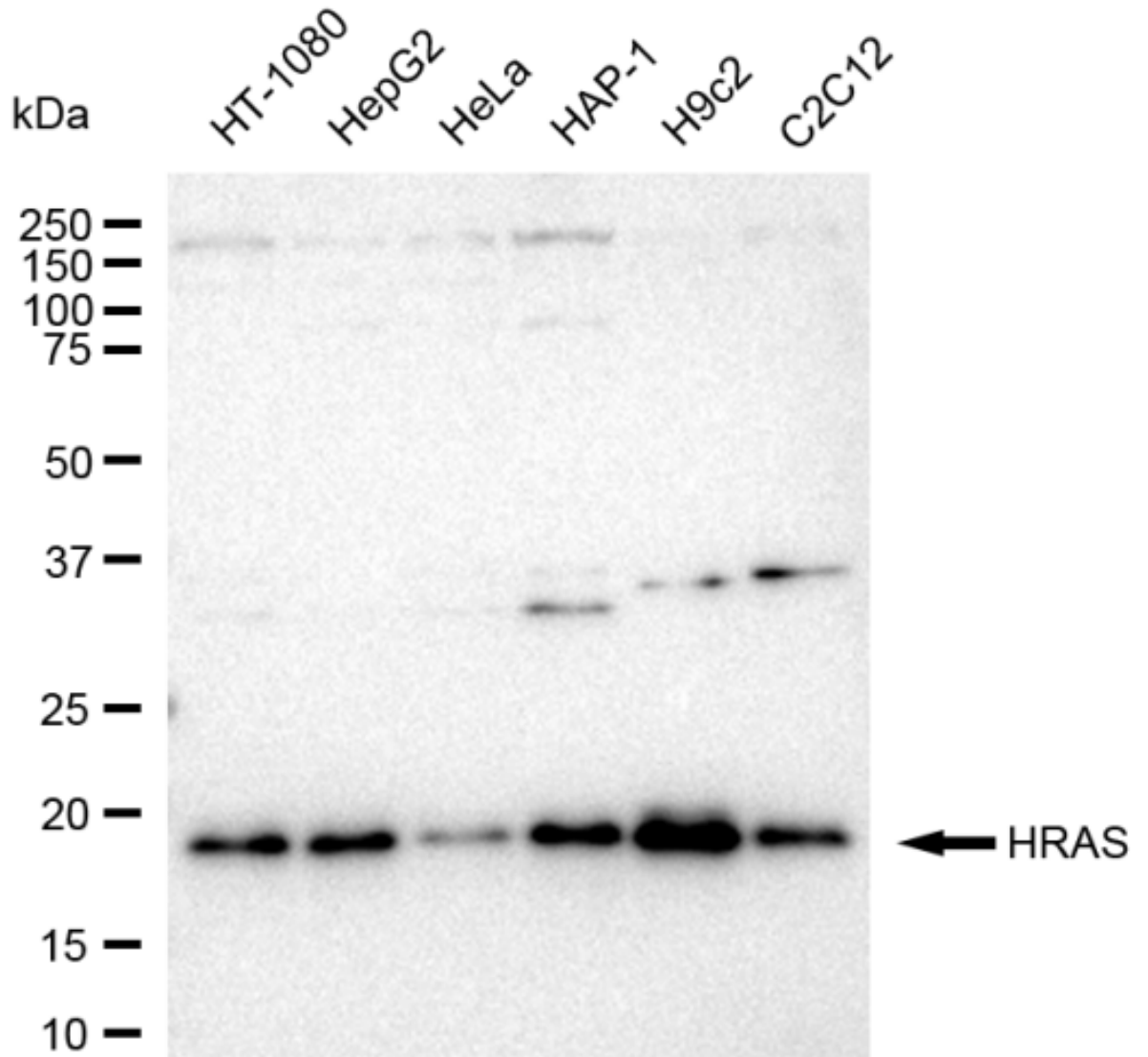
Western Blotting (WB): 1:1,000-1:5,000 Flow Cytometry (FCM): 1:2,000

Protocols

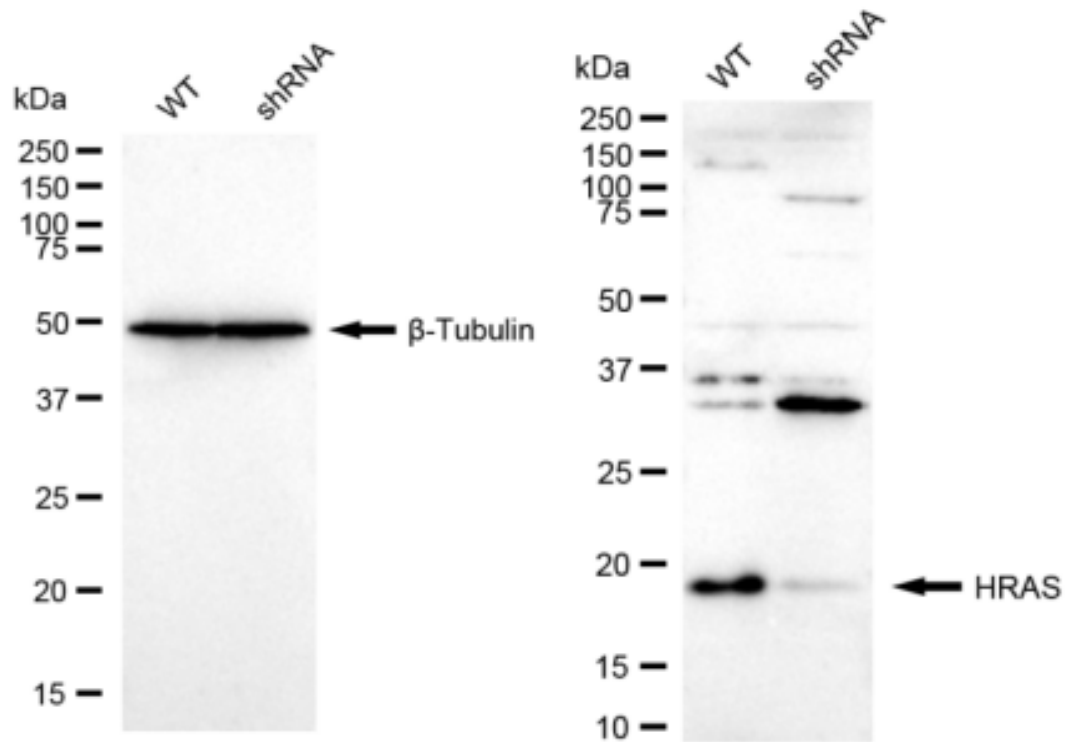
For general and specific antibody protocols please visit our website. Read all instructions before using this product.



Flow cytometric analysis of HRAS expression in HepG2 cells using HRAS antibody 1:2,000. Green, isotype control; red, HRAS.



Western blotting analysis using anti-HRAS antibody 1:5,000 and HRP-conjugated goat anti-rabbit secondary antibody 1:20,000 respectively. Image was developed using FeQ™ ECL Substrate Kit .



Western blotting analysis using anti-HRAS antibody 1:5,000 and HRP-conjugated goat anti-rabbit secondary antibody 1:20,000 respectively. Image was developed using FeQ™ ECL Substrate Kit .