



SunLong Biotech Co.,LTD  
Tel: 0086-571- 56623320 Fax:0086-571- 56623318  
E-mail:sales@sunlongbiotech.com  
www.sunlongbiotech.com

## **[KD-Validated] Anti-Pancreatic proteinase 1 Rabbit Monoclonal Antibody**

Cat No.: KD-10466

### **Aliases:**

HPRT1; Hypoxanthine Phosphoribosyltransferase 1; HGPRT; HPRT; Hypoxanthine Guanine Phosphoribosyl Transferase; Hypoxanthine-Guanine Phosphoribosyltransferase; EC 2.4.2.8; HGPRTase; Hypoxanthine-Guanine Phosphoribosyltransferase 1; Testicular Tissue Protein Li 89; Lesch-Nyhan Syndrome

### **Background:**

UniProt Entry: [P00492](#);NCBI Gene Entry: [3251](#)

### **Application Information**

Molecular Weight: Predicted, 25 kDa, observed, 25 kDa Clonality: Rabbit monoclonal antibody Clone ID: 24GB6185 Species Reactivity: Human, Mouse, Rat Applications Tested: Western Blotting (WB), Flow Cytometry (FCM), Immunocytochemistry (IC)

### **Immunogen**

A synthesized peptide derived from human HPRT

### **Isotype**

Rabbit IgG

### **Storage Buffer**

Supplied in PBS (pH 7.4) containing 50% glycerol, and 0.02% sodium azide.

## Storage

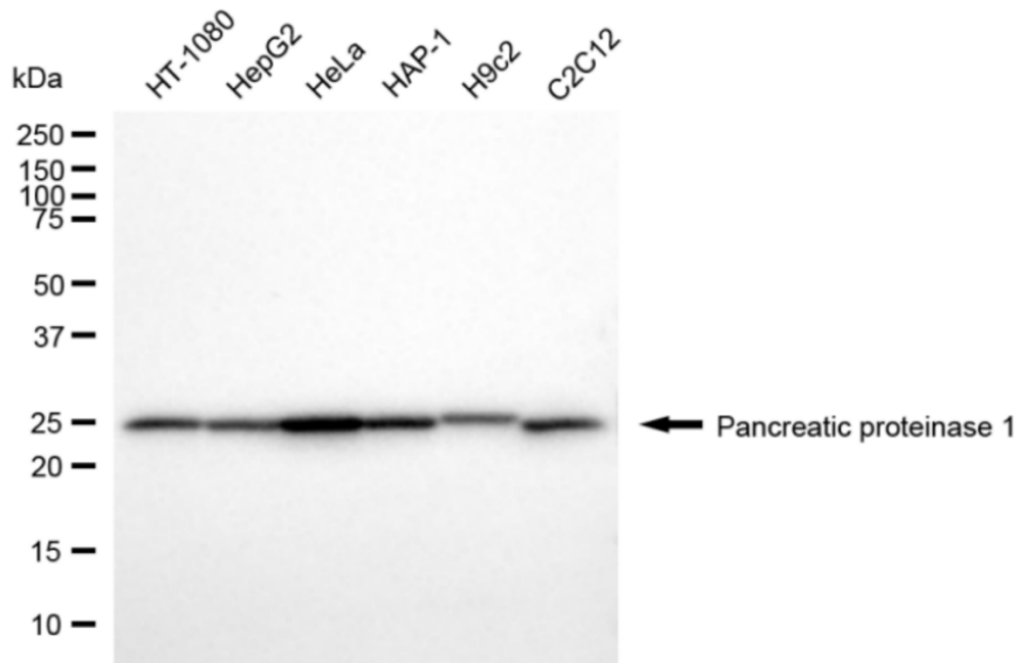
Store at -20 °C for one year.

## Recommended Dilutions

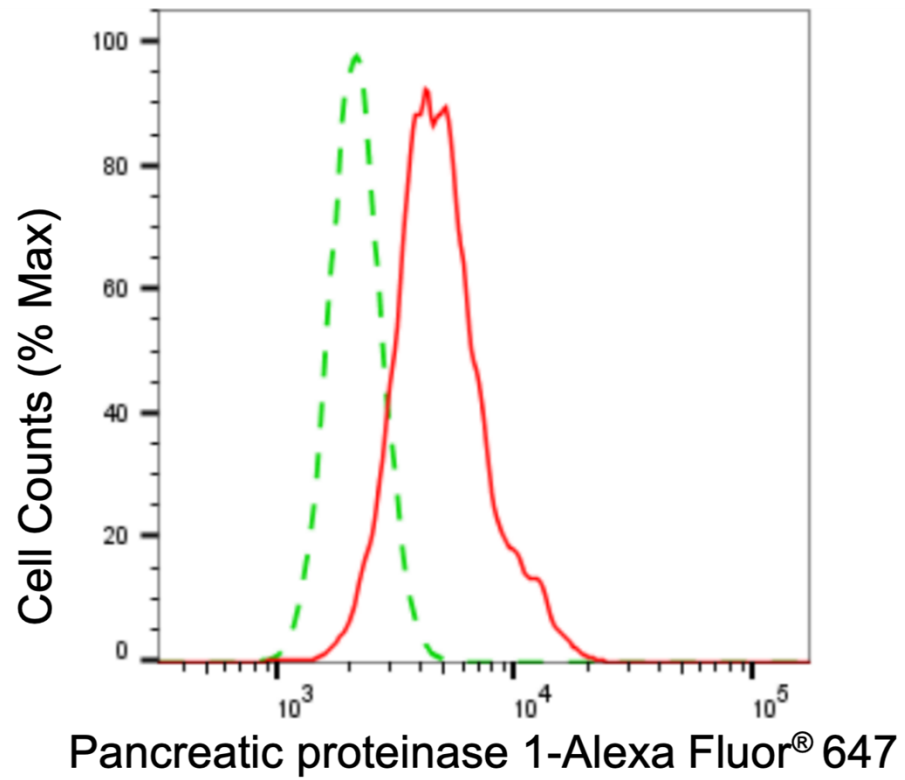
Western Blotting (WB): 1:1,000-1:5,000 Flow Cytometry (FCM): 1:2,000  
Immunocytochemistry (IC): 1:1,000

## Protocols

For general and specific antibody protocols please visit our website. Read all instructions before using this product.



Western blotting analysis using anti-pancreatic proteinase 1 antibody 1:5,000 and HRP-conjugated goat anti-rabbit secondary antibody 1:20,000 respectively. Image was developed using NaQ™ ECL Substrate Kit 1:5,000 and HRP-conjugated goat anti-rabbit secondary antibody 1:20,000 respectively. Image was developed using NaQ™ ECL Substrate Kit 1:1,000. Nuclei were stained blue with DAPI; Pancreatic proteinase 1 was stained magenta with Alexa Fluor® 647. Images were taken using Leica stellaris 5. Protein abundance based on laser Intensity and smart gain: Medium. Scale bar: 20 µm.



Flow cytometric analysis of pancreatic proteinase 1 expression in HepG2 cells using pancreatic proteinase 1 antibody 1:2,000. Green, isotype control; red, pancreatic proteinase 1.