



SunLong Biotech Co.,LTD
Tel: 0086-571- 56623320 Fax:0086-571- 56623318
E-mail:sales@sunlongbiotech.com
www.sunlongbiotech.com

[KD-Validated] Anti-Homer scaffold protein 1 Rabbit Monoclonal Antibody

Cat No.: KD-10464

Aliases:

HOMER1; Homer Scaffold Protein 1; SYN47; Ves-1; Homer Scaffolding Protein 1; Homer Protein Homolog 1; HOMER-1B; Homer-1; Homer, Neuronal Immediate Early Gene, 1; Homer Homolog 1 (Drosophila); Homer Homolog 1; HOMER1A; HOMER1B; HOMER1C; HOMER

Background:

UniProt Entry: [Q86YM7](#);NCBI Gene Entry: [9456](#)

Application Information

Molecular Weight: Predicted, 40 kDa, observed, 45 kDa Clonality: Rabbit monoclonal antibody Clone ID: 24GB6005 Species Reactivity: Human, Mouse, Rat Applications Tested: Western Blotting (WB), Flow Cytometry (FCM), Immunocytochemistry (IC)

Immunogen

A synthesized peptide derived from human Homer1

Isotype

Rabbit IgG

Storage Buffer

Supplied in PBS (pH 7.4) containing 50% glycerol, and 0.02% sodium azide.

Storage

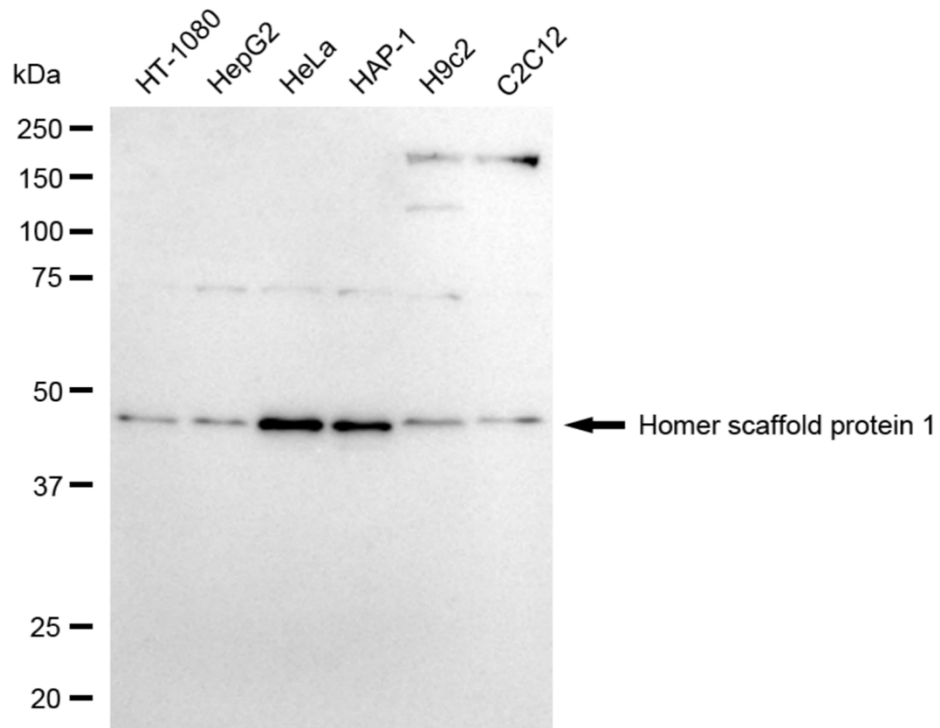
Store at -20 °C for one year.

Recommended Dilutions

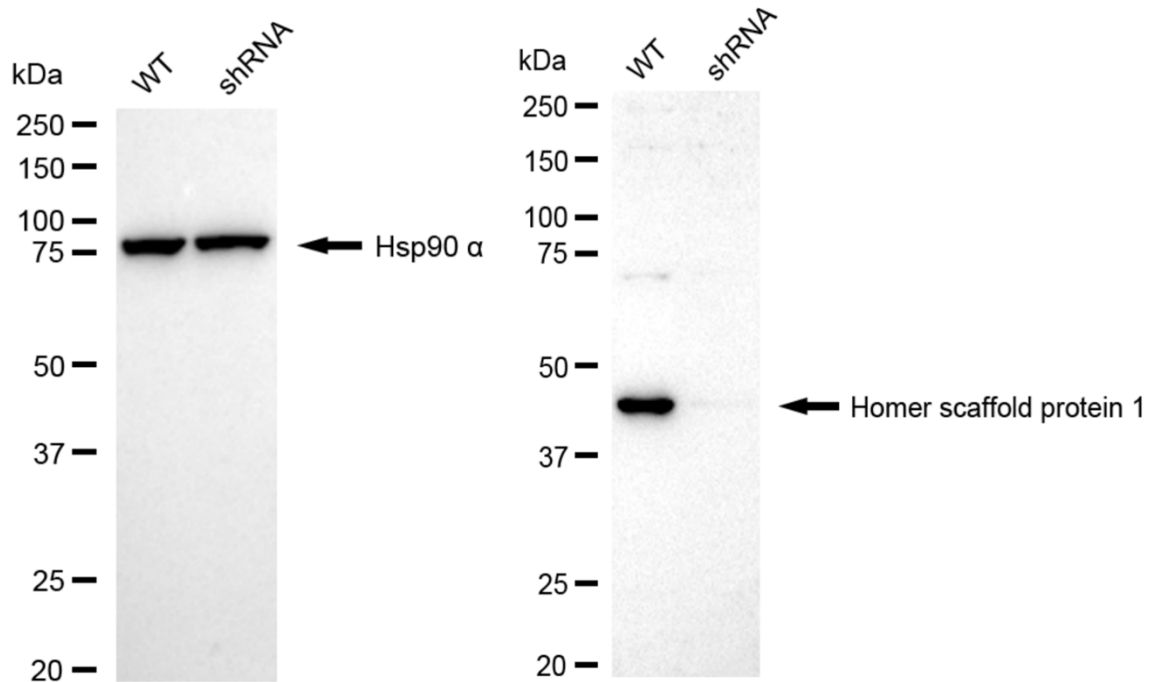
Western Blotting (WB): 1:1,000-1:5,000 Flow Cytometry (FCM): 1:2,000
Immunocytochemistry (IC): 1:1,000

Protocols

For general and specific antibody protocols please visit our website. Read all instructions before using this product.



Western blotting analysis using anti-homer scaffold protein 1 antibody 1:5,000 and HRP-conjugated goat anti-rabbit secondary antibody 1:20,000 respectively. Image was developed using FeQTM ECL Substrate Kit .



Western blotting analysis using anti-homer scaffold protein 1 antibody 1:5,000 and HRP-conjugated goat anti-rabbit secondary antibody 1:20,000 respectively. Image was developed using NaQ™ ECL Substrate Kit 1:2,000. Green, isotype control; red, homer scaffold protein 1.