



SunLong Biotech Co.,LTD  
Tel: 0086-571- 56623320 Fax:0086-571- 56623318  
E-mail:sales@sunlongbiotech.com  
www.sunlongbiotech.com

## **[KD-Validated] Anti-MHC class 1 Rabbit Monoclonal Antibody**

Cat No.: KD-10458

### **Aliases:**

HLA-A; Major Histocompatibility Complex, Class I, A; HLA Class I Histocompatibility Antigen, A Alpha Chain; HLAA; HLA Class I Histocompatibility Antigen, A-1 Alpha Chain; MHC Class I Antigen HLA-A Heavy Chain; Leukocyte Antigen Class I-A; Human Leukocyte Antigen A

### **Background:**

UniProt Entry: [P04439](#);NCBI Gene Entry: [3105](#)

### **Application Information**

Molecular Weight: Predicted, 41 kDa, observed, 41 kDa Clonality: Rabbit monoclonal antibody Clone ID: 24GB6040 Species Reactivity: Human, Mouse, Rat Applications Tested: Western Blotting (WB), Flow Cytometry (FCM), Immunocytochemistry (IC)

### **Immunogen**

A synthesized peptide derived from human MHC class 1

### **Isotype**

Rabbit IgG

### **Storage Buffer**

Supplied in PBS (pH 7.4) containing 50% glycerol, and 0.02% sodium azide.

## Storage

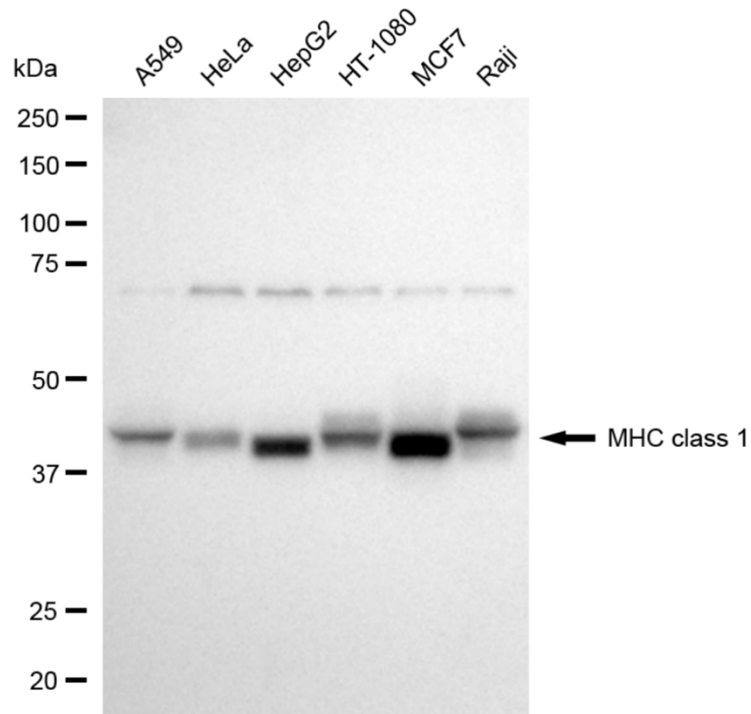
Store at -20 °C for one year.

## Recommended Dilutions

Western Blotting (WB): 1:1,000-1:5,000 Flow Cytometry (FCM): 1:2,000  
Immunocytochemistry (IC): 1:1,000

## Protocols

For general and specific antibody protocols please visit our website. Read all instructions before using this product.



Western blotting analysis using anti-MHC class 1 antibody 1:5,000 and HRP-conjugated goat anti-rabbit secondary antibody 1:20,000 respectively. Image was developed using NaQ™ ECL Substrate Kit 1:5,000 and HRP-conjugated goat anti-rabbit secondary antibody 1:20,000 respectively. Image was developed using NaQ™ ECL Substrate Kit 1:2,000. Green, isotype control; red, MHC class 1.