



SunLong Biotech Co.,LTD
Tel: 0086-571- 56623320 Fax:0086-571- 56623318
E-mail:sales@sunlongbiotech.com
www.sunlongbiotech.com

[KD-Validated] Anti-Hexokinase 1 Rabbit Monoclonal Antibody

Cat No.: KD-10457

Aliases:

Brain Form Hexokinase; Hexokinase Type I; Hexokinase-1; Hexokinase-A; EC 2.7.1.1; Neuropathy, Hereditary Motor And Sensory, Russe Type; Glycolytic Enzyme; Hexokinase IR; Hexokinase; EC 2.7.1; NEDVIBA; HK1-Ta; HK1-Tb; HK1-Tc; HMSNR; HXK1; NMSR; RP79; HK I; HKD; HKI; HK

Background:

UniProt Entry: [P19367](#);NCBI Gene Entry: [3098](#)

Application Information

Molecular Weight: Predicted, 102 kDa, observed, 102 kDa Clonality: Rabbit monoclonal antibody Clone ID: 23GB870 Species Reactivity: Human, Mouse, Rat Applications Tested: Western Blotting (WB), Flow Cytometry (FCM), Immunocytochemistry (IC)

Immunogen

A synthesized peptide derived from human Hexokinase 1

Isotype

Rabbit IgG

Storage Buffer

Supplied in PBS (pH 7.4) containing 50% glycerol, and 0.02% sodium azide.

Storage

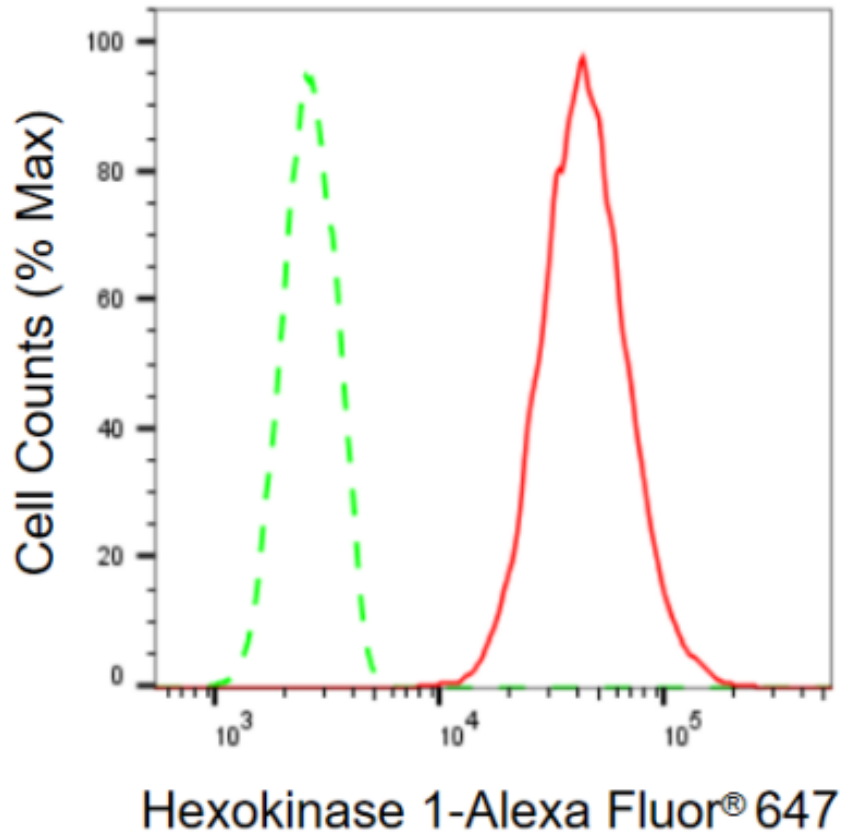
Store at -20 °C for one year.

Recommended Dilutions

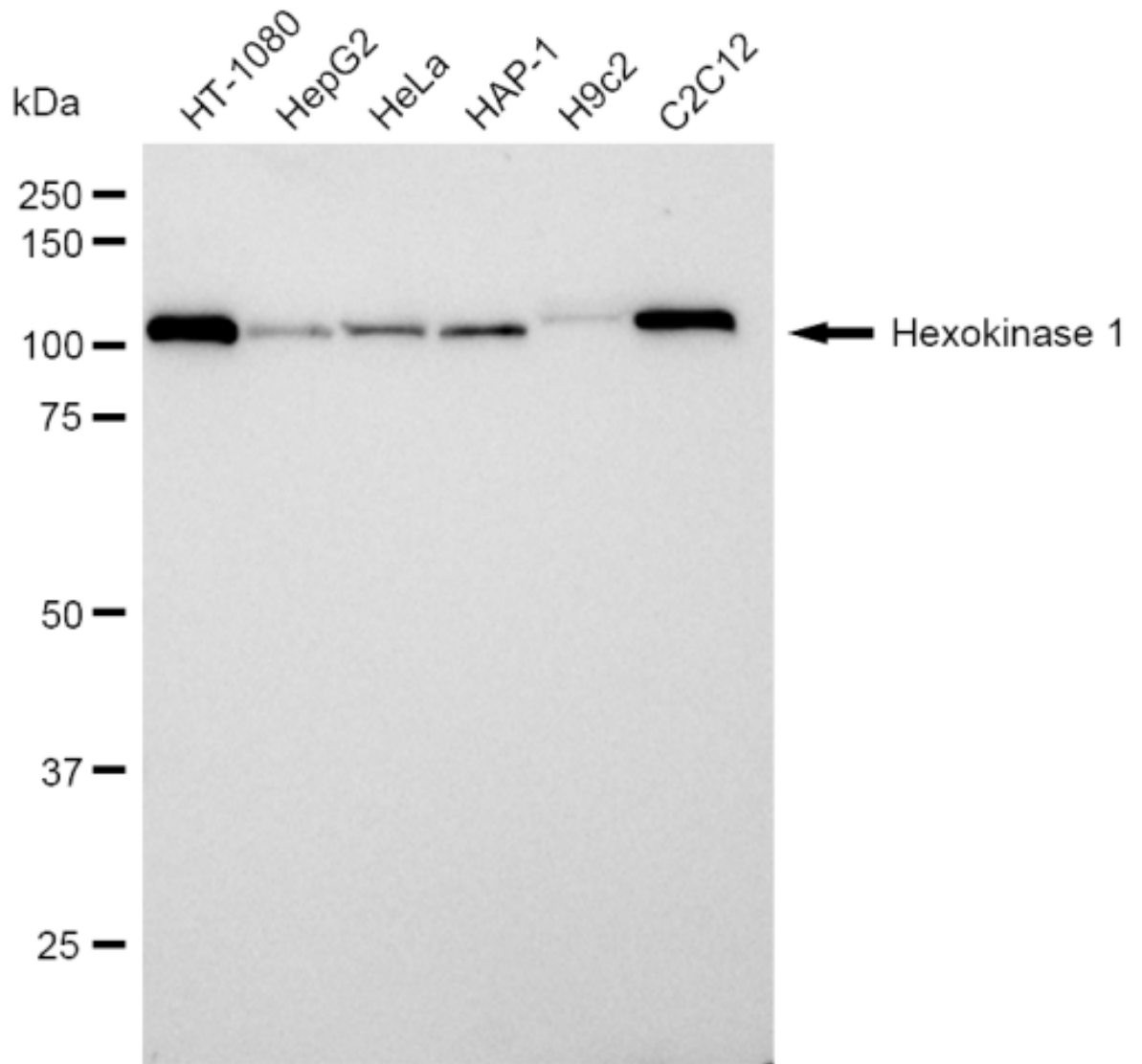
Western Blotting (WB): 1:1,000-1:5,000 Flow Cytometry (FCM): 1:2,000
Immunocytochemistry (IC): 1:1,000

Protocols

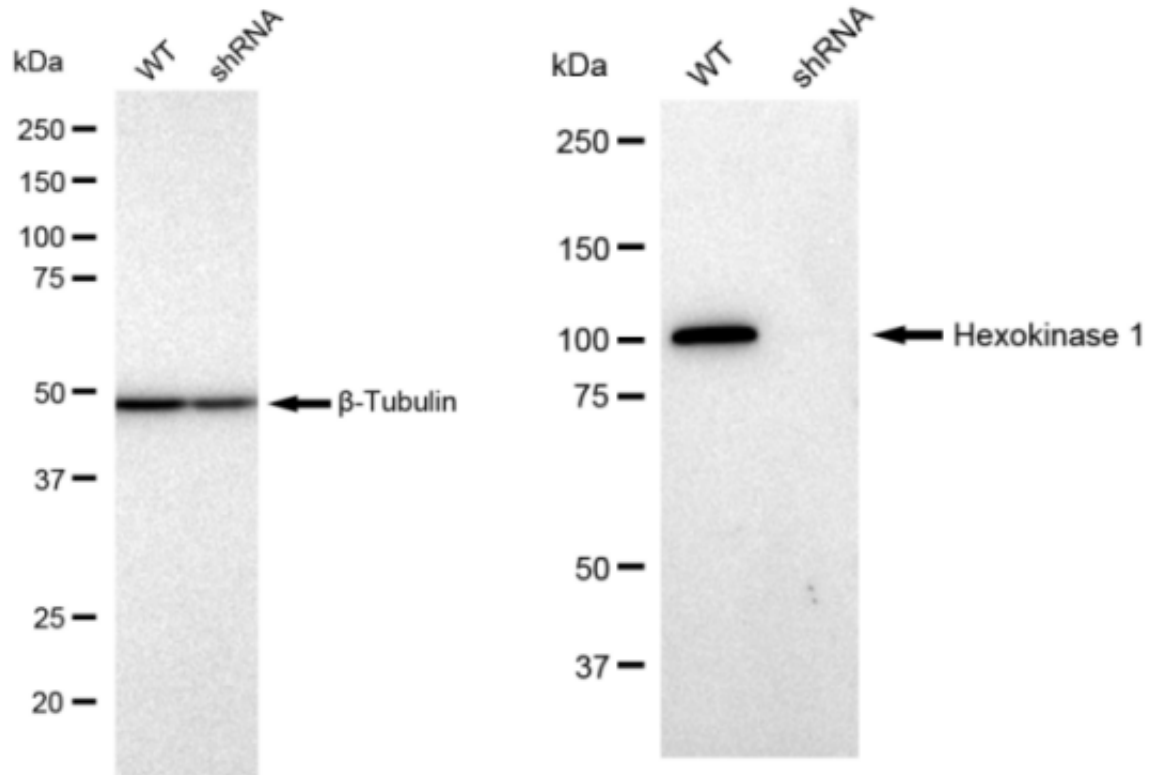
For general and specific antibody protocols please visit our website. Read all instructions before using this product.



Flow cytometric analysis of Hexokinase 1 expression in HT-1080 cells using Hexokinase 1 antibody 1:1,000. Nuclei were stained blue with DAPI; Hexokinase 1 was stained magenta with Alexa Fluor® 647. Images were taken using Leica stellaris 5. Protein abundance based on laser Intensity and smart gain: Medium. Scale bar: 20 µm.



Western blotting analysis using anti-Hexokinase 1 antibody . Total cell lysates (30 μ g) from various cell lines were loaded and separated by SDS-PAGE. The blot was incubated with anti-Hexokinase 1 antibody and HRP-conjugated goat anti rabbit secondary antibody respectively. Image was developed using FeQ™ ECL Substrate Kit .



Western blotting analysis using anti-Hexokinase 1 antibody . Hexokinase 1 expression in wild type (WT) and Hexokinase 1 shRNA knockdown (KD) HeLa cells with 30 μ g of total cell lysates. β -Tubulin serves as a loading control. The blot was incubated with anti-Hexokinase 1 antibody and HRP-conjugated goat anti rabbit secondary antibody respectively. Image was developed using FeQ™ ECL Substrate Kit .