



SunLong Biotech Co.,LTD  
Tel: 0086-571- 56623320 Fax:0086-571- 56623318  
E-mail:sales@sunlongbiotech.com  
www.sunlongbiotech.com

## **[KD-Validated] Anti-HIF1AN Rabbit Monoclonal Antibody**

Cat No.: KD-10456

### **Aliases:**

HIF1AN; Hypoxia Inducible Factor 1 Subunit Alpha Inhibitor; FIH1; Hypoxia-Inducible Factor Asparagine Hydroxylase; Hypoxia-Inducible Factor 1-Alpha Inhibitor; Peptide-Aspartate Beta-Dioxygenase; Factor Inhibiting HIF-1; FLJ20615; FLJ22027; FIH-1; Hypoxia Inducible Factor 1 Alpha Subunit Inhibitor; Factor Inhibiting HIF1; DKFZp762F1811; DKFZP762F1811; EC 1.14.11.30; EC 1.14.11.N4

### **Background:**

UniProt Entry: [Q9NWT6](#);NCBI Gene Entry: [55662](#)

### **Application Information**

Molecular Weight: Predicted, 40 kDa, observed, 40 kDa Clonality: Rabbit monoclonal antibody Clone ID: 23GB6385 Species Reactivity: Human Applications Used: Western Blotting (WB), Flow Cytometry (FCM), Immunocytochemistry (IC)

### **Immunogen**

A synthesized peptide derived from human HIF1AN

### **Isotype**

Rabbit IgG

### **Storage Buffer**

Supplied in PBS (pH 7.4) containing 50% glycerol, and 0.02% sodium azide.

**Storage**

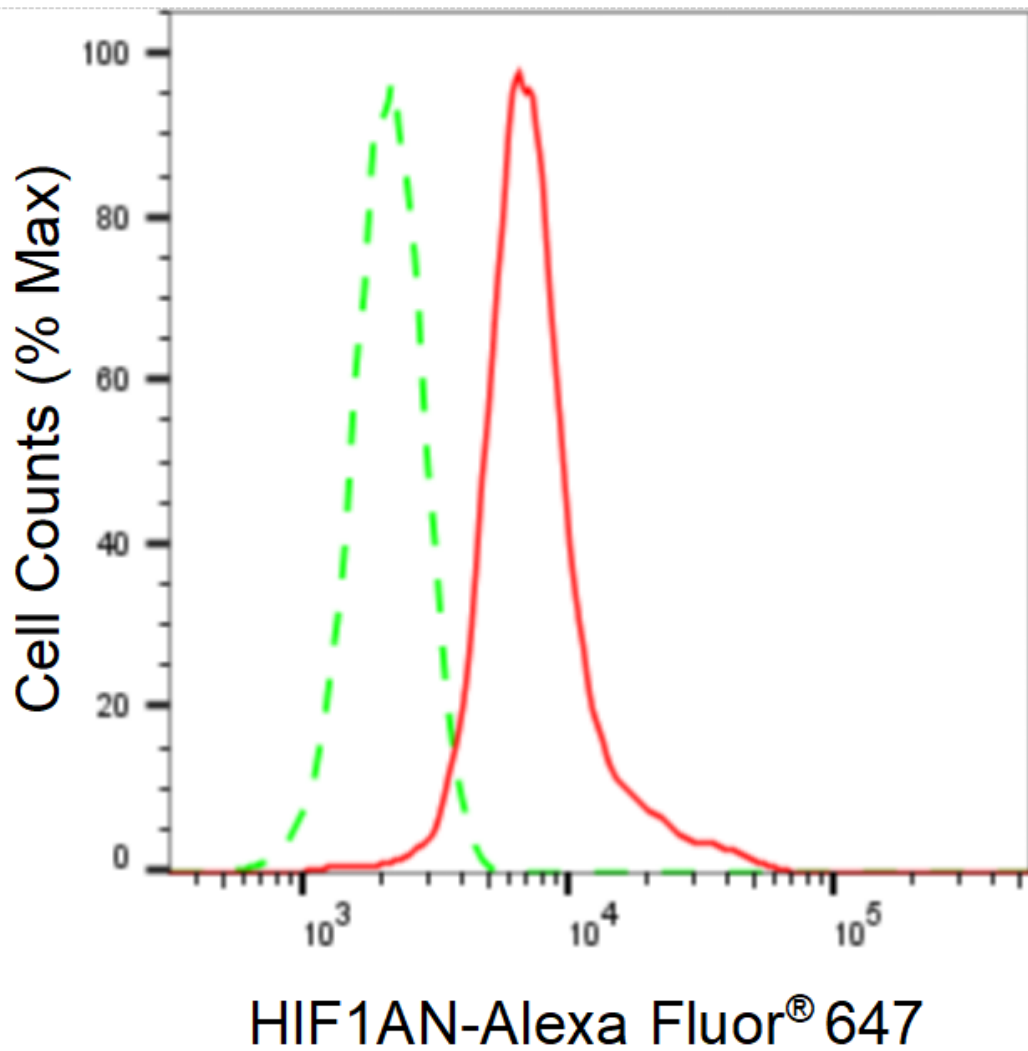
Store at -20 °C for one year.

**Recommended Dilutions**

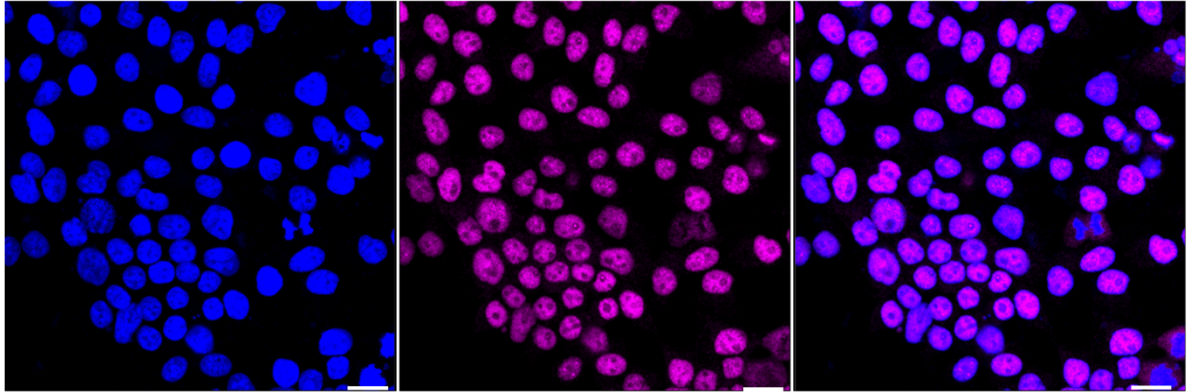
Western Blotting (WB): 1:1,000-1:5,000 Flow Cytometry (FCM): 1:2,000  
Immunocytochemistry (IC): 1:1,000

**Protocols**

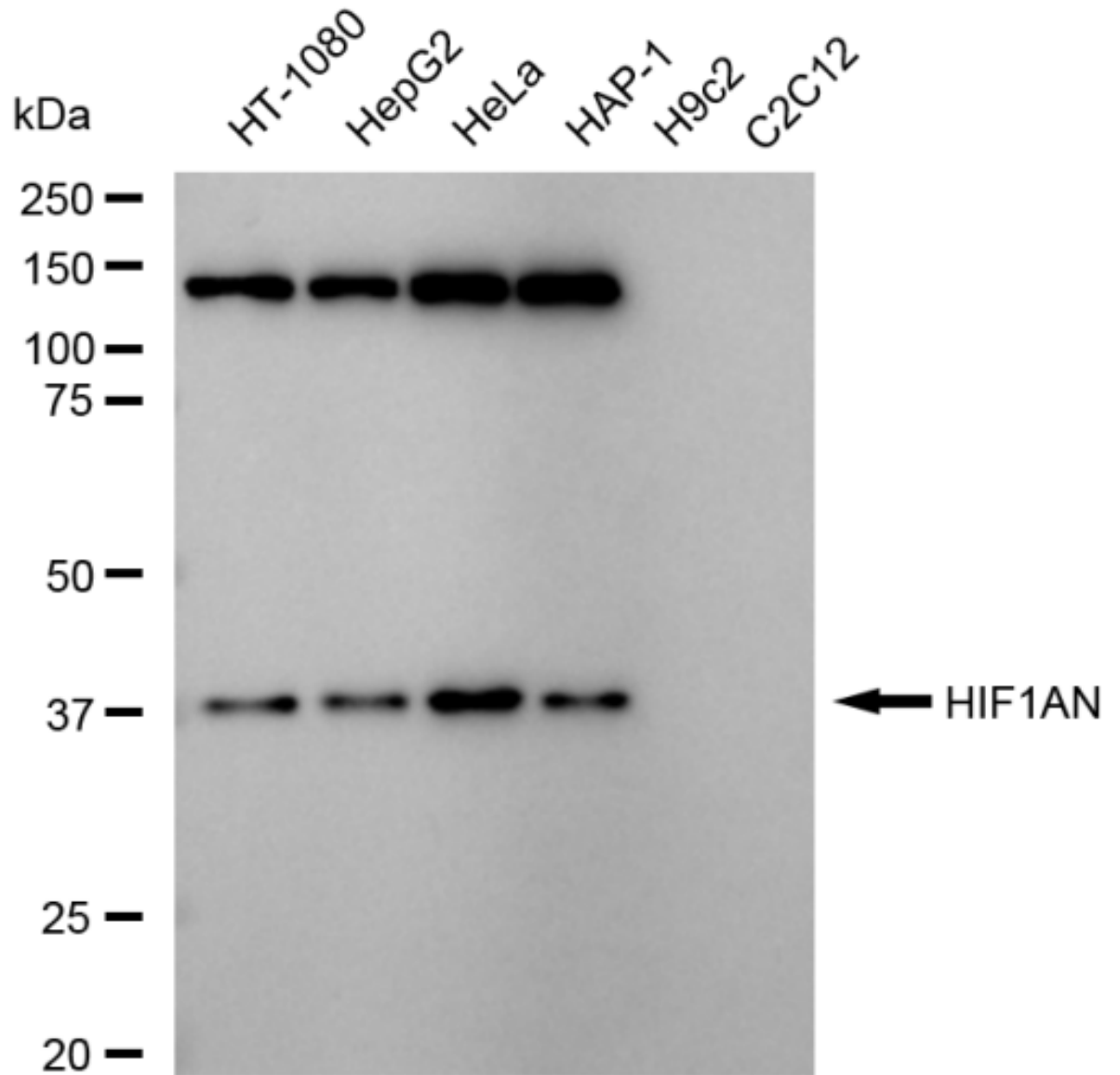
For general and specific antibody protocols please visit our website. Read all instructions before using this product.



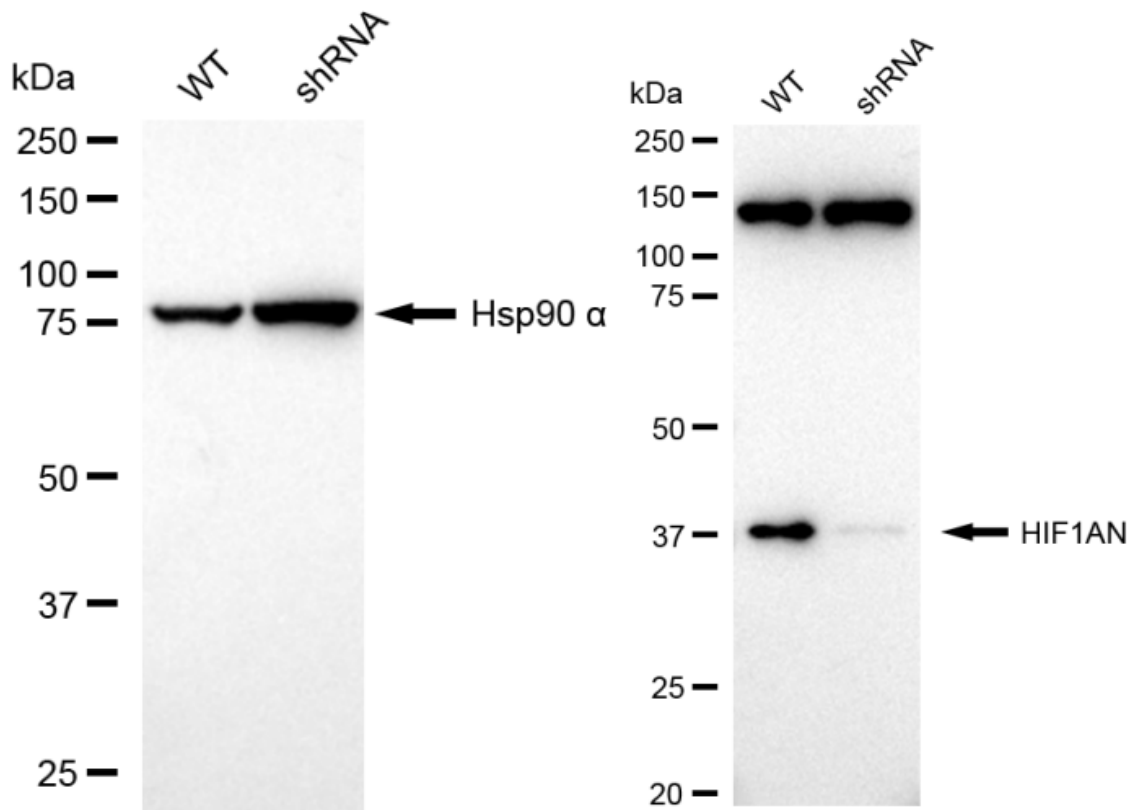
Flow cytometric analysis of HIF1AN expression in HeLa cells using HIF1AN antibody 1:2,000. GrHIF1ANotype control; red, HIF1AN.



Immunocytochemical staining of HeLa cells with anti-HIF1AN antibody 1:1,000. Nuclei were stained blue with DAPI; HIF1AN was stained magenta with Alexa Fluor® 647. Images were taken using Leica stellaris 5. Protein abundance based on laser Intensity and smart gain: High. Scale bar: 20  $\mu$ m.



Western blotting analysis using anti-HIF1AN antibody 1:5,000 and HRP-conjugated goat anti-rabbit secondary antibody 1:20,000 respectively. Image was developed using FeQ™ ECL Substrate Kit .



Western blotting analysis using anti-HIF1AN antibody 1:5,000 and HRP-conjugated goat anti-rabbit secondary antibody 1:20,000 respectively. Image was developed using NaQ™ ECL Substrate Kit .