



SunLong Biotech Co.,LTD
Tel: 0086-571- 56623320 Fax:0086-571- 56623318
E-mail:sales@sunlongbiotech.com
www.sunlongbiotech.com

[KD-Validated] Anti-Histone deacetylase 6 Rabbit Monoclonal Antibody

Cat No.: KD-10453

Aliases:

HDAC6; Histone Deacetylase 6; HD6; KIAA0901; PPP1R90; JM21; Protein Phosphatase 1, Regulatory Subunit 90; Tubulin-Lysine Deacetylase HDAC6; Alpha-Tubulin Deacetylase HDAC6; EC 3.5.1.98; FLJ16239; EC 3.5.1.-; CPBHM; KDAC6

Background:

UniProt Entry: [Q9UBN7](#);NCBI Gene Entry: [10013](#)

Application Information

Molecular Weight: Predicted, 131 kDa, observed, 160 kDa Clonality: Rabbit monoclonal antibody Clone ID: 23GB6170 Species Reactivity: Human Applications: Western Blotting (WB), Flow Cytometry (FCM)

Immunogen

A synthesized peptide derived from human HDAC6

Isotype

Rabbit IgG

Storage Buffer

Supplied in PBS (pH 7.4) containing 50% glycerol, and 0.02% sodium azide.

Storage

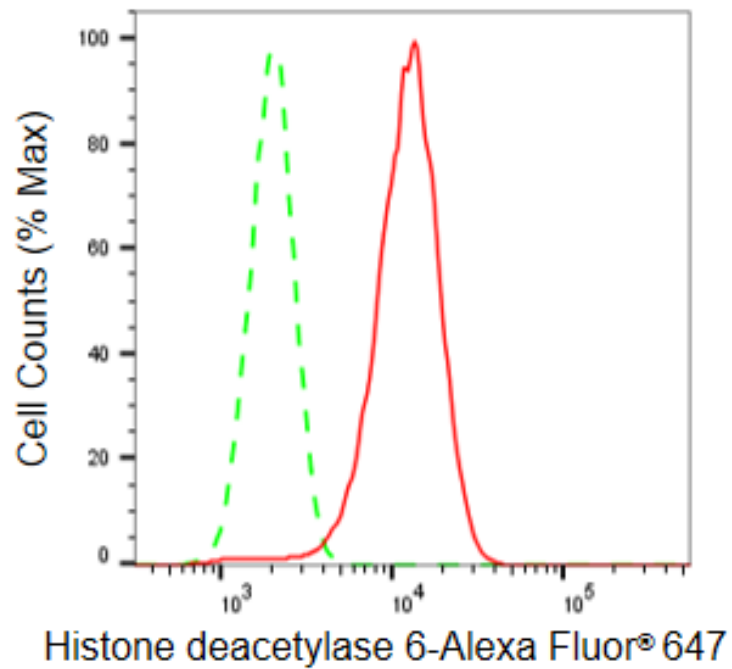
Store at -20 °C for one year.

Recommended Dilutions

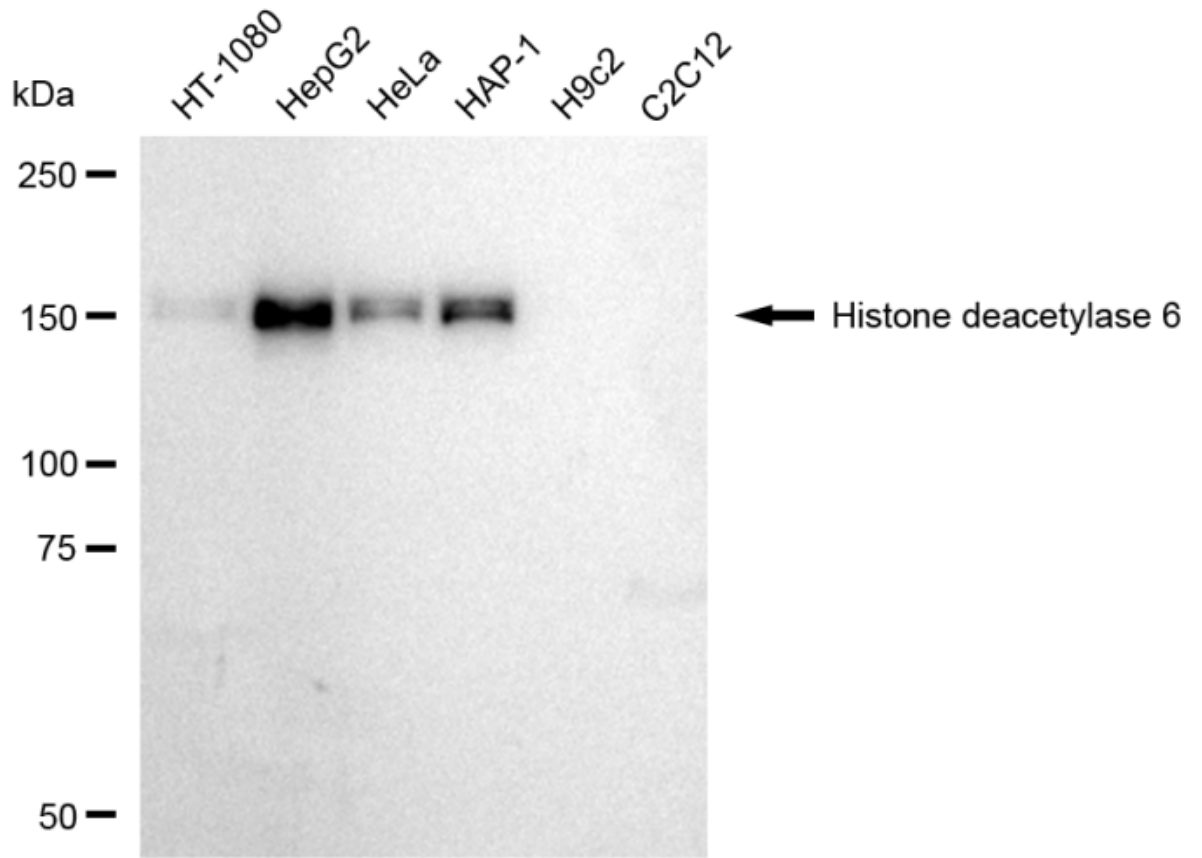
Western Blotting (WB): 1:1,000-1:20,000 Flow Cytometry (FCM): 1:2,000

Protocols

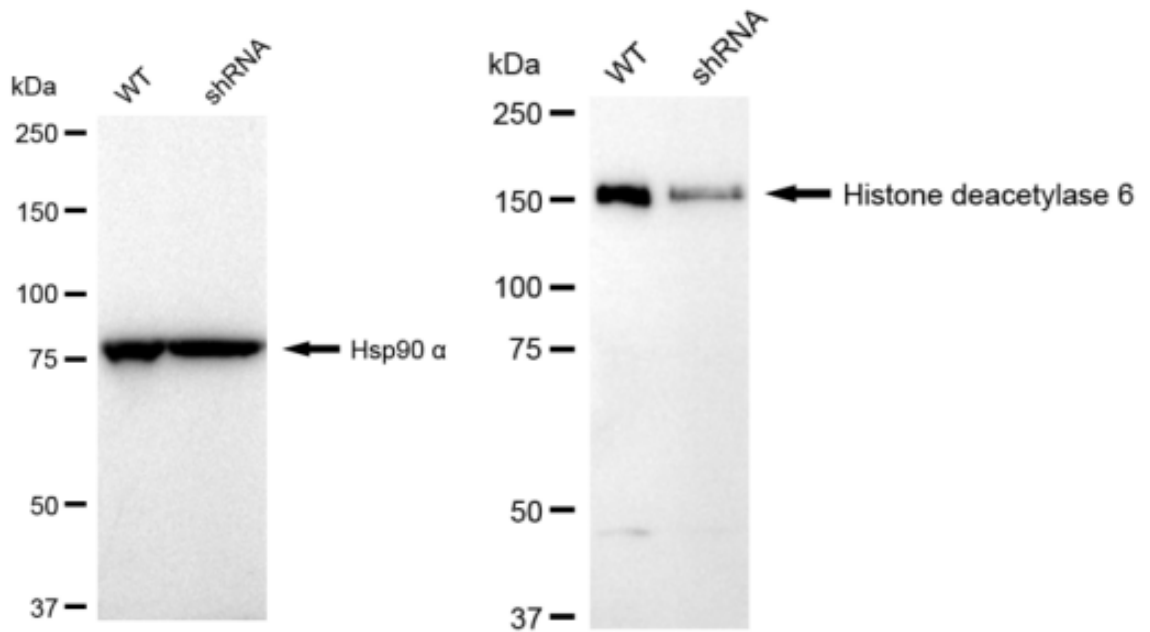
For general and specific antibody protocols please visit our website. Read all instructions before using this product.



Flow cytometric analysis of Histone deacetylase 6 expression in HepG2 cells using Histone deacetylase 6 antibody 1:2,000. Green, isotype control; red, Histone deacetylase 6.



Western blotting analysis using anti-Histone deacetylase 6 antibody 1:20,000 and HRP-conjugated goat anti-rabbit secondary antibody 1:20,000 respectively. Image was developed using FeQ™ ECL Substrate Kit .



Western blotting analysis using anti-Histone deacetylase 6 antibody 1:20,000 and HRP-conjugated goat anti-rabbit secondary antibody 1:20,000 respectively. Image was developed using FeQ™ ECL Substrate Kit .