



SunLong Biotech Co.,LTD
Tel: 0086-571- 56623320 Fax:0086-571- 56623318
E-mail:sales@sunlongbiotech.com
www.sunlongbiotech.com

[KD-Validated] Anti-HAUS7 Rabbit Monoclonal Antibody

Cat No.: KD-10449

Aliases:

HAUS7; HAUS Augmin Like Complex Subunit 7; UIP1; UCHL5IP; 26S Proteasome-Associated UCH37-Interacting Protein 1; HAUS Augmin-Like Complex Subunit 7; X-Linked Protein STS1769; 26S Proteasome-Associated UCH Interacting Protein 1; UCH37 Interacting Protein 1; UCHL5 Interacting Protein; UCHL5-Interacting Protein

Background:

UniProt Entry: [Q99871](#);NCBI Gene Entry: [55559](#)

Application Information

Molecular Weight: Predicted, 40 kDa, observed, 37 kDa Clonality: Rabbit monoclonal antibody Clone ID: 23GB4485 Species Reactivity: Human Applications Used: Western Blotting (WB), Flow Cytometry (FCM), Immunocytochemistry (IC)

Immunogen

A synthesized peptide derived from human UCHL5IP

Isotype

Rabbit IgG

Storage Buffer

Supplied in PBS (pH 7.4) containing 50% glycerol, and 0.02% sodium azide.

Storage

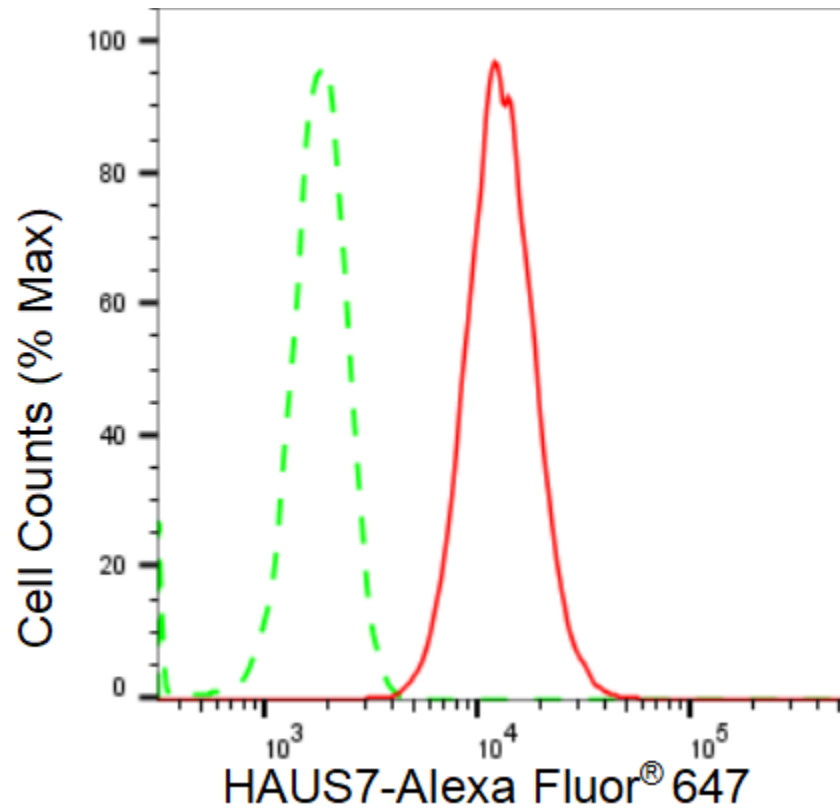
Store at -20 °C for one year.

Recommended Dilutions

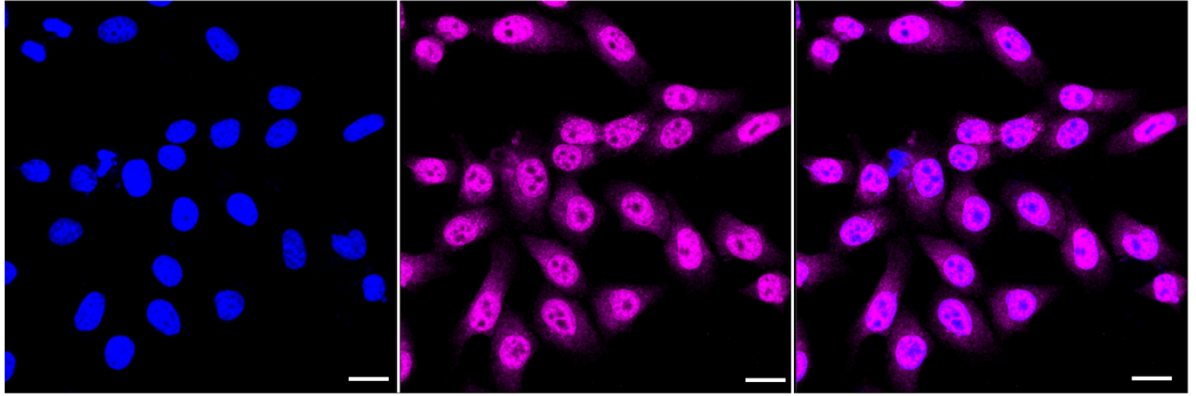
Western Blotting (WB): 1:1,000-1:5,000 Flow Cytometry (FCM): 1:2,000
Immunocytochemistry (IC): 1:1,000

Protocols

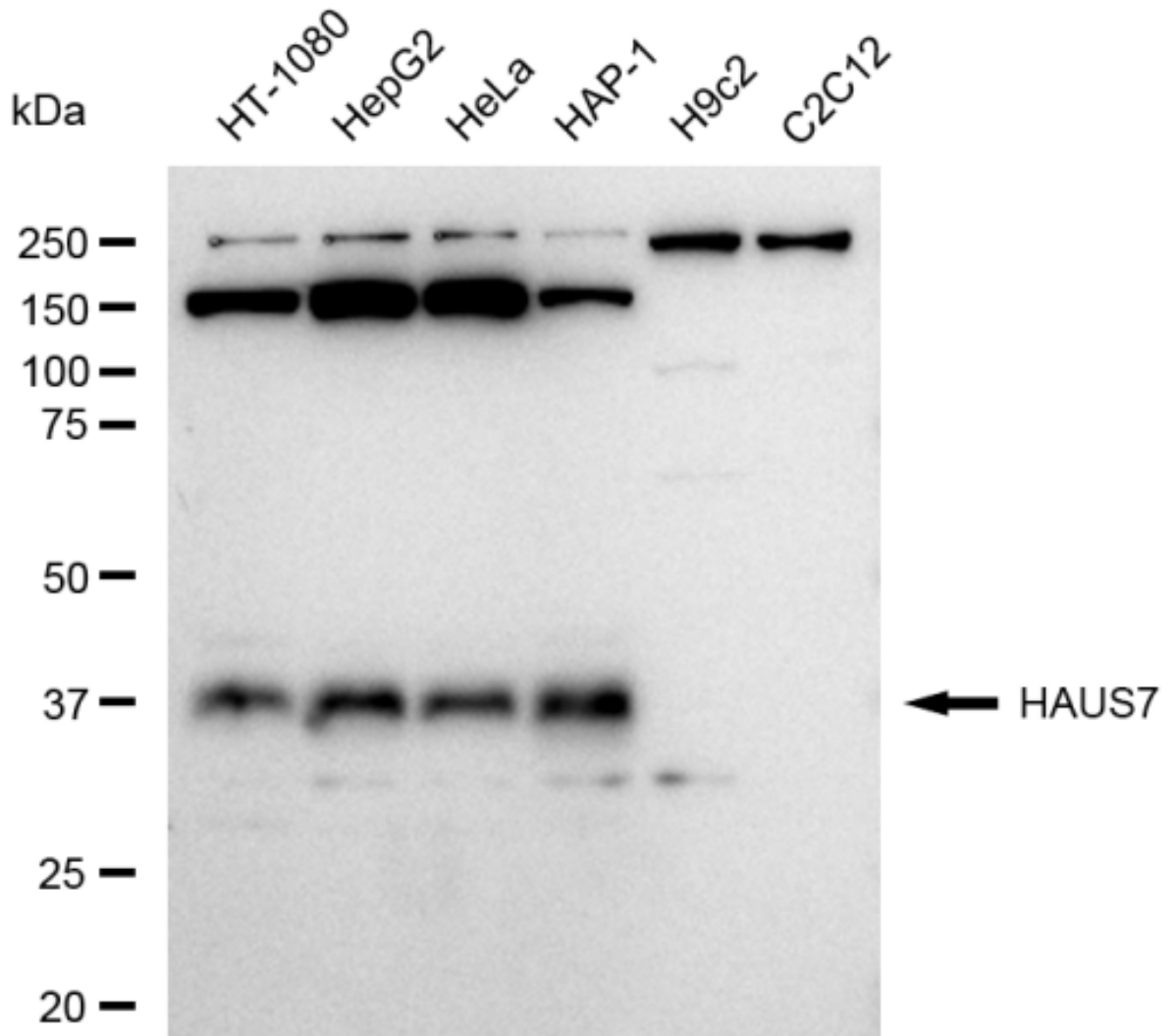
For general and specific antibody protocols please visit our website. Read all instructions before using this product.



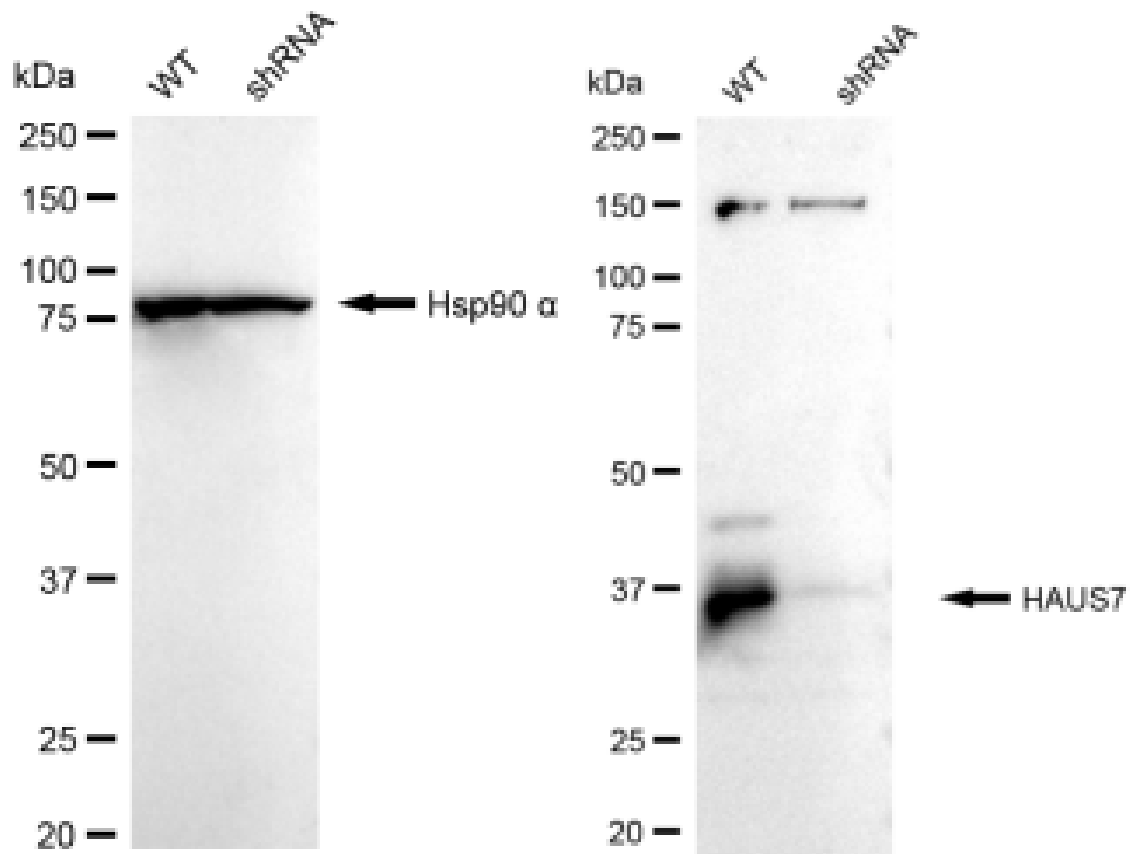
Flow cytometric analysis of HAUS7 expression in HepG2 cells using HAUS7 antibody 1:2,000. Green, isotype control; red, HAUS7.



Immunocytochemical staining of HepG2 cells with HAUS7 antibody 1:1,000. Nuclei were stained blue with DAPI; HAUS7 was stained magenta with Alexa Fluor® 647. Images were taken using Leica stellaris 5. Protein abundance based on laser Intensity and smart gain: Medium. Scale bar: 20 μ m.



Western blotting analysis using anti-HAUS7 antibody 1:5,000 and HRP-conjugated goat anti-rabbit secondary antibody 1:20,000 respectively. Image was developed using FeQ™ ECL Substrate Kit .



Western blotting analysis using anti-HAUS7 antibody 1:5,000 and HRP-conjugated goat anti-rabbit secondary antibody 1:20,000 respectively. Image was developed using FeQ™ ECL Substrate Kit .