



SunLong Biotech Co.,LTD
Tel: 0086-571- 56623320 Fax:0086-571- 56623318
E-mail:sales@sunlongbiotech.com
www.sunlongbiotech.com

[KD-Validated] Anti-Histone H3 (acetyl K27) Rabbit Monoclonal Antibody

Cat No.: KD-10447

Aliases:

H3C1; H3 Clustered Histone 1; HIST1H3A; H3/A; H3FA; Histone Cluster 1 H3 Family Member A; H3 Histone Family, Member A; Histone Cluster 1, H3a; Histone 1, H3a; Histone H3.1; Histone H3/A; H3FC HIST1H3C; Histone H3/B; Histone H3/C; Histone H3/D; Histone H3/F; Histone H3/H; Histone H3/I; Histone; H3/J; Histone H3/K; Histone H3/L; HIST1H3B; HIST1H3D; HIST1H3E; HIST1H3F; HIST1H3G; HIST1H3H; HIST1H3I; HIST1H3J; H3C10; H3C11; H3C12; H3C2; H3C3; H3C4; H3C6; H3C7; H3C8; H3FL; H3FB; H3FD; H3FI; H3FH; H3FK; H3FF; H3FJ

Background:

UniProt Entry: [PKD-10199/ P84243/Q16695/ Q6NXT2/ Q71DI3](#);NCBI Gene Entry: [8350/ 3020/8290/440093/653604](#)

Application Information

Molecular Weight: Predicted, 15 kDa, observed, 17 kDa Clonality: Rabbit monoclonal antibody Clone ID: 23GB4480 Species Reactivity: Human, Mouse, Rat Applications Tested: Western Blotting (WB), Flow Cytometry (FCM), Immunocytochemistry (IC)

Immunogen

A synthesized peptide derived from human Histone H3 (acetyl K27)

Isotype

Rabbit IgG

Storage Buffer

Supplied in PBS (pH 7.4) containing 50% glycerol, and 0.02% sodium azide.

Storage

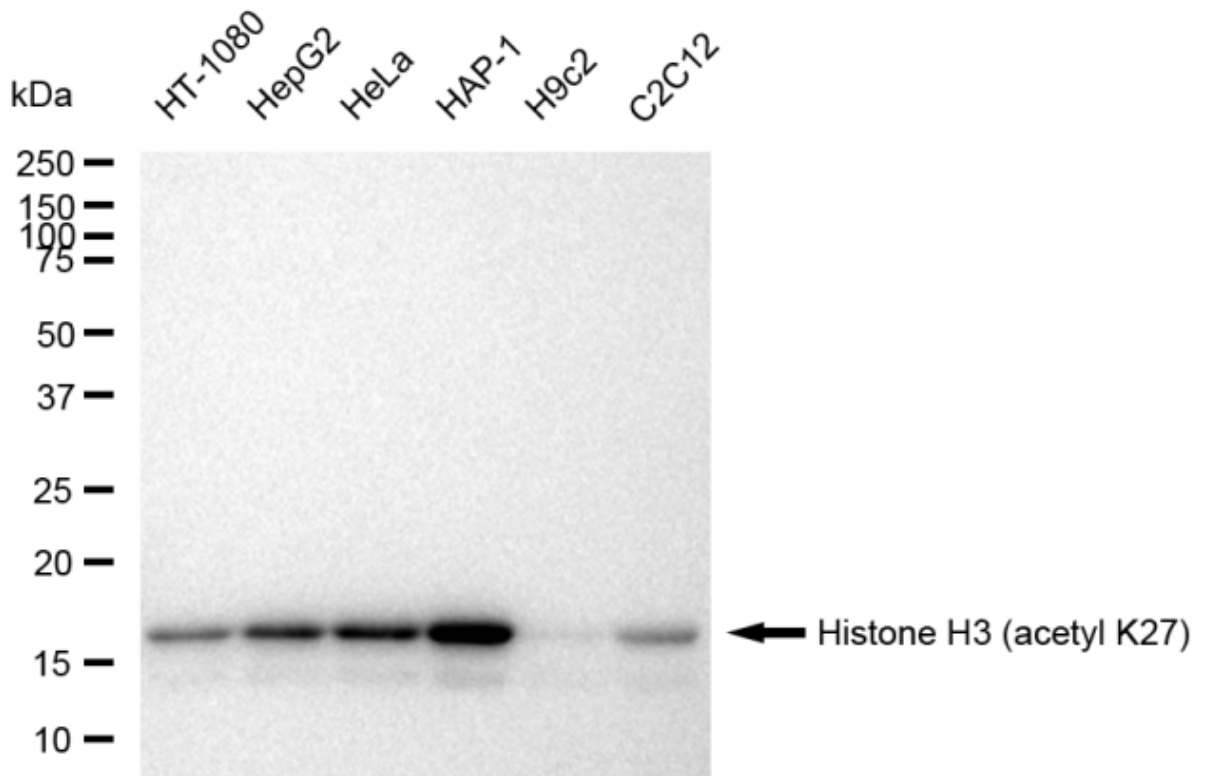
Store at -20 °C for one year.

Recommended Dilutions

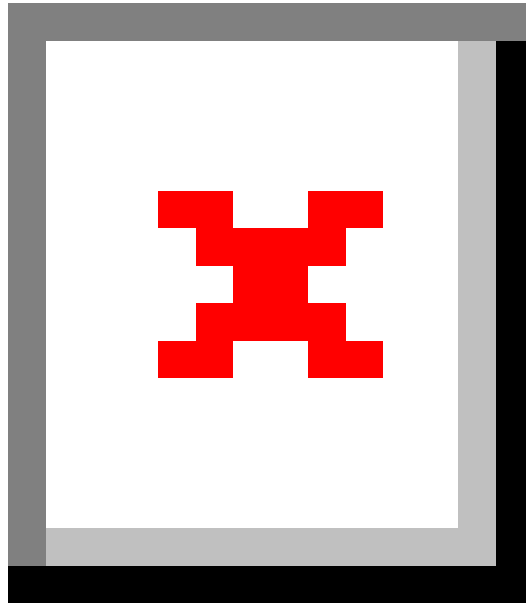
Western Blotting (WB): 1:1,000-1:5,000 Flow Cytometry (FCM): 1:2,000
Immunocytochemistry (IC): 1:1,000

Protocols

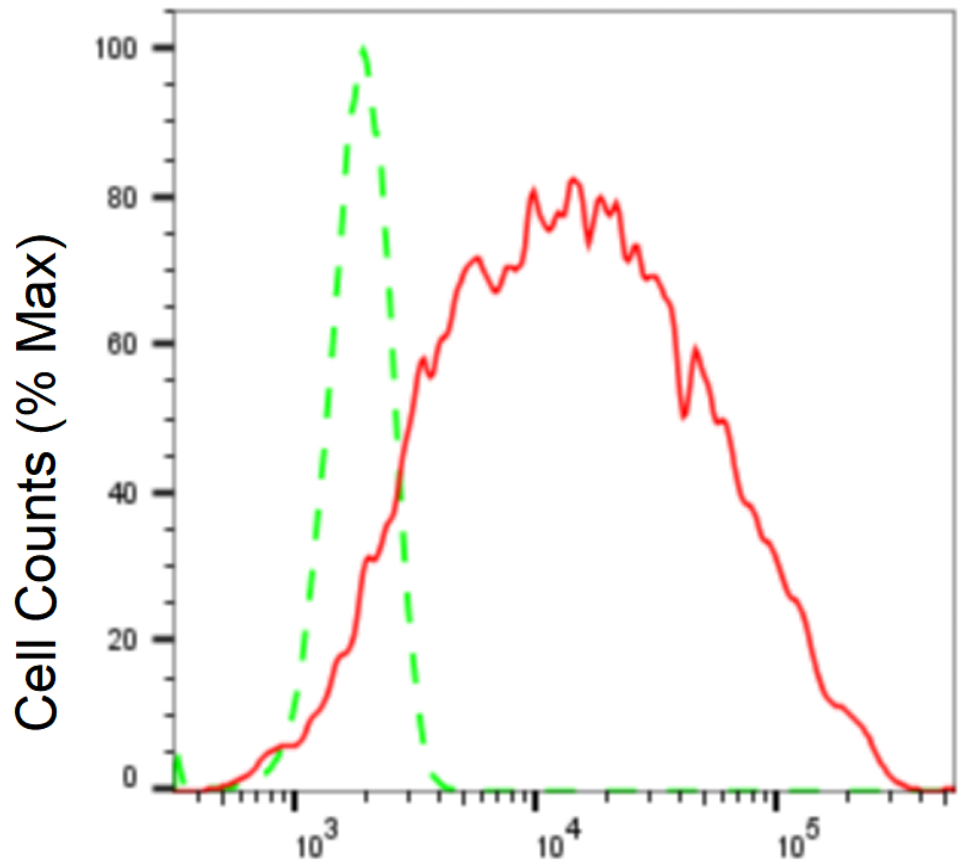
For general and specific antibody protocols please visit our website. Read all instructions before using this product.



Western blotting analysis using anti-Histone H3 (acetyl K27) antibody 1:5,000 and HRP-conjugated goat anti-rabbit secondary antibody 1:20,000 respectively. Image was developed using FeQTM ECL Substrate Kit .

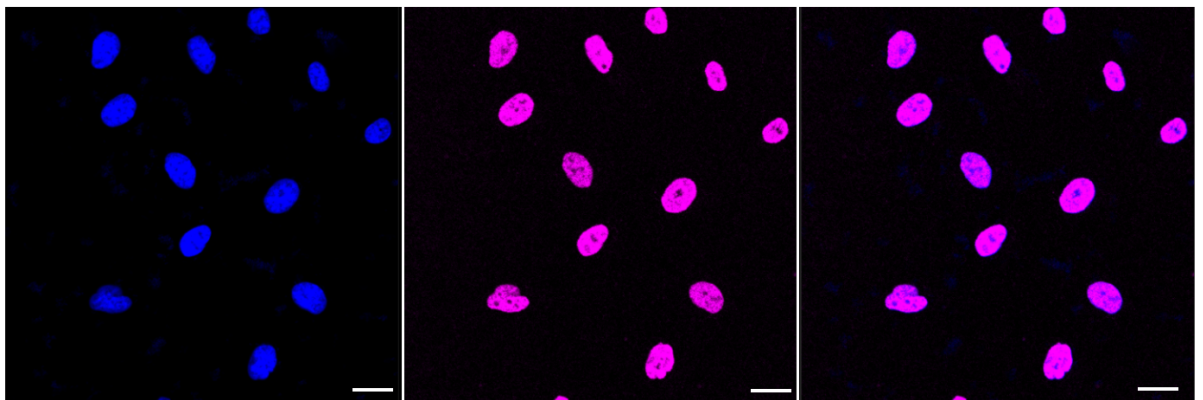


Western blotting analysis using anti-Histone H3 (acetyl K27) antibody 1:5,000 and HRP-conjugated goat anti-rabbit secondary antibody 1:20,000 respectively. Image was developed using FeQTM ECL Substrate Kit .



Histone H3 (acetyl K27)-Alexa Fluor® 647

Flow cytometric analysis of Histone H3 (acetyl K27) expression in HeLa cells using Histone H3 (acetyl K27) antibody 1:2,000. Green, isotype control; red, Histone H3 (acetyl K27).



Immunocytochemical staining of HeLa cells with Histone H3 (acetyl K27) antibody 1:1,000. Nuclei were stained blue with DAPI; Histone H3 (acetyl K27) was stained magenta with Alexa Fluor® 647. Images were taken using Leica stellaris 5. Protein abundance based on laser Intensity and smart gain: Medium. Scale bar: 20 μm .