



SunLong Biotech Co.,LTD
Tel: 0086-571- 56623320 Fax:0086-571- 56623318
E-mail:sales@sunlongbiotech.com
www.sunlongbiotech.com

[KD-Validated] Anti-Histone H1.0 Rabbit Monoclonal Antibody

Cat No.: KD-10443

Aliases:

H1-0; H1.0 Linker Histone; H1.0; H1F0; H1FV; H1 Histone Family Member 0; H1.0, H1(0), H1-0; Histone H1(0); Histone H1.0; Histone H1'; H1 Histone Family, Member 0; H10

Background:

UniProt Entry: [P07305](#);NCBI Gene Entry: [3005](#)

Application Information

Molecular Weight: Predicted, 21 kDa, observed, 28 kDa Clonality: Rabbit monoclonal antibody Clone ID: 23GB1965 Species Reactivity: Human, Mouse, Rat Applications Tested: Western Blotting (WB), Immunocytochemistry (IC)

Immunogen

A synthesized peptide derived from human Histone H1.0

Isotype

Rabbit IgG

Storage Buffer

Supplied in PBS (pH 7.4) containing 50% glycerol, and 0.02% sodium azide.

Storage

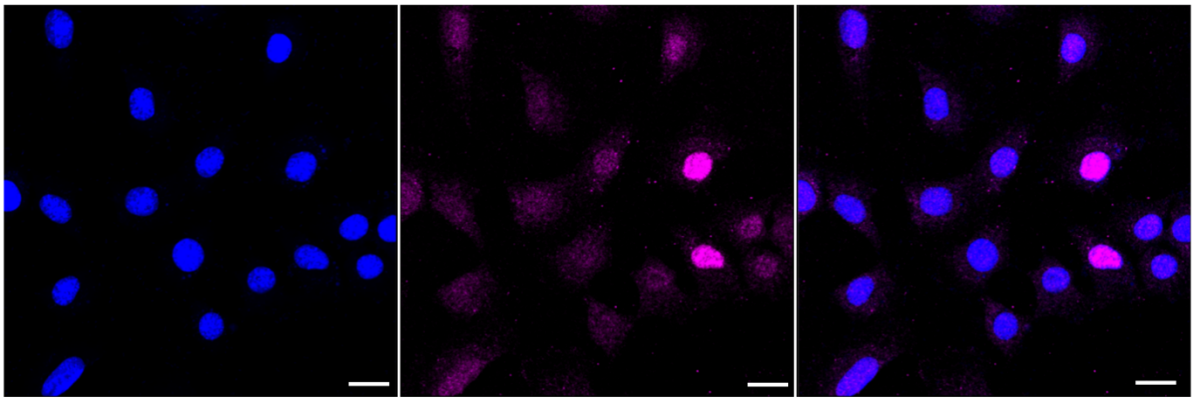
Store at -20 °C for one year.

Recommended Dilutions

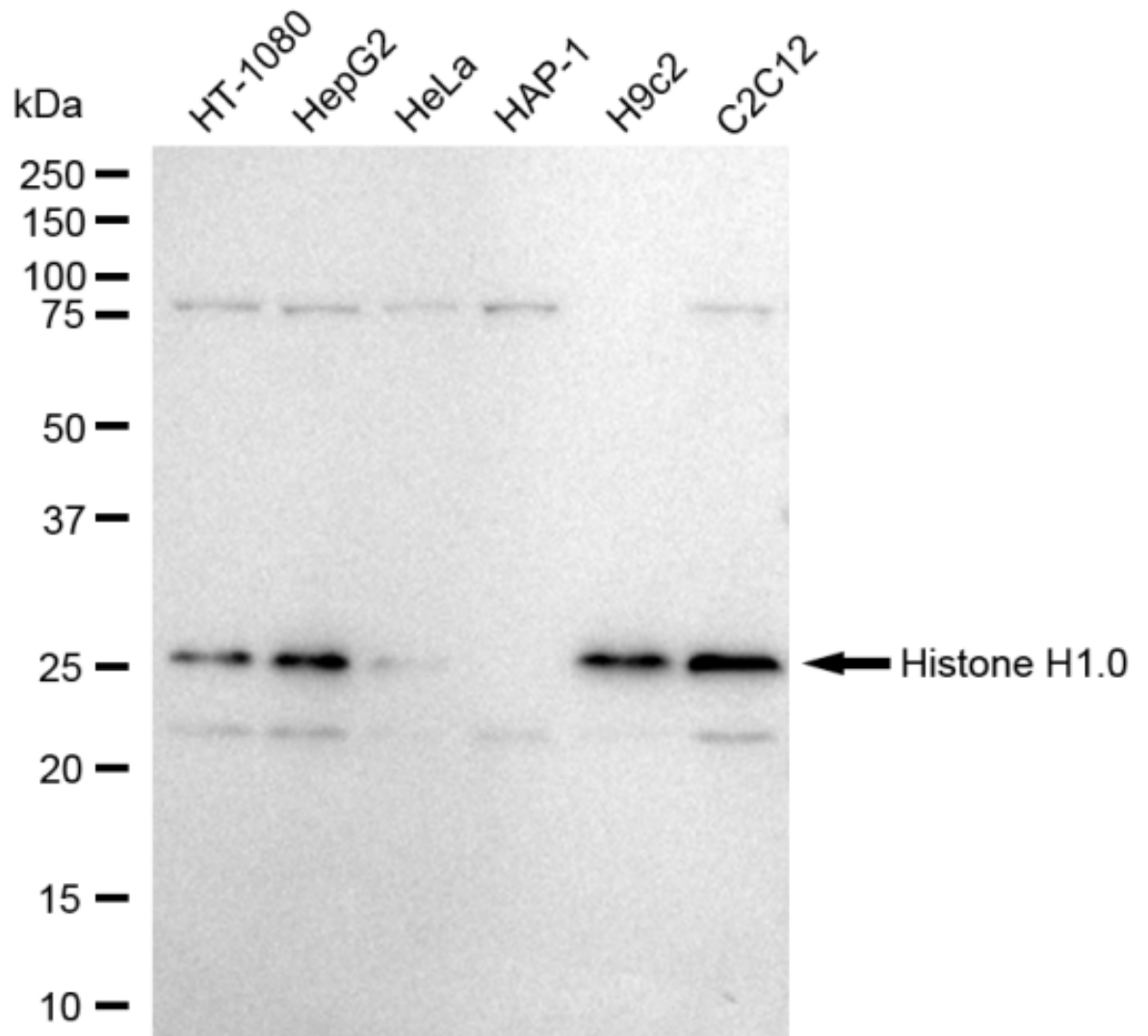
Western Blotting (WB): 1:1,000-1:5,000 Immunocytochemistry (IC): 1:1,000

Protocols

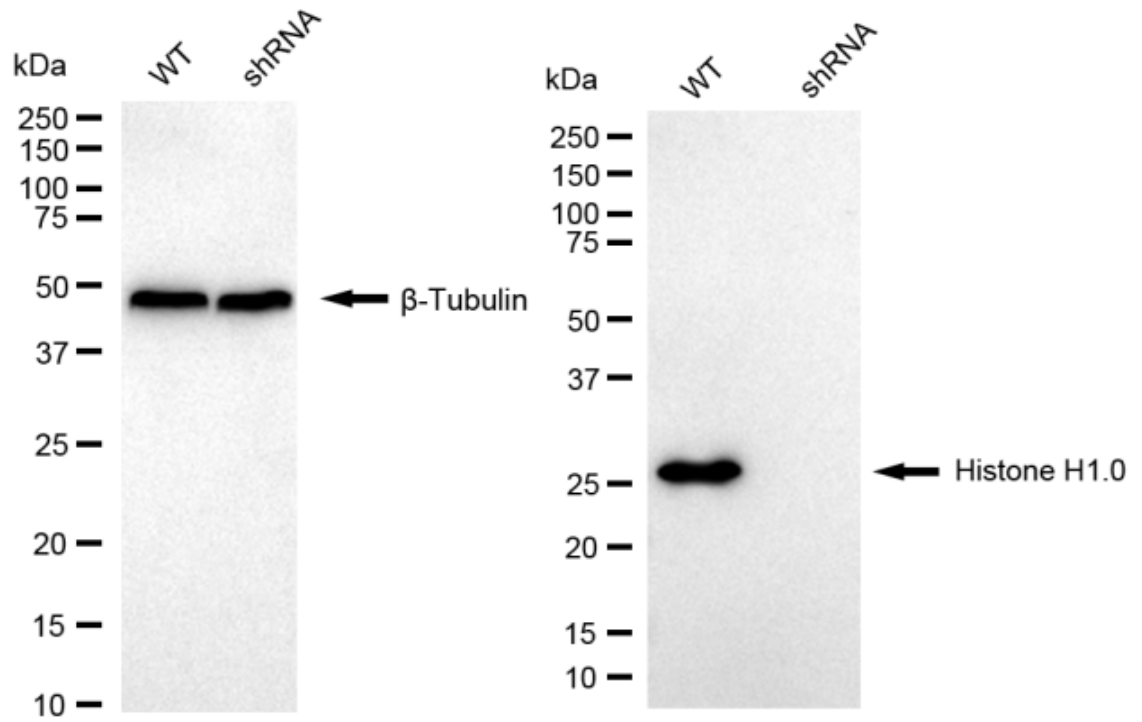
For general and specific antibody protocols please visit our website. Read all instructions before using this product.



Immunocytochemical staining of C2C12 cells with Histone H1.0 antibody 1:1,000. Nuclei were stained blue with DAPI; Histone H1.0 was stained magenta with Alexa Fluor® 647. Images were taken using Leica stellaris 5. Protein abundance based on laser Intensity and smart gain: Medium. Scale bar: 20 µm.



Western blotting analysis using anti-Histone H1.0 antibody 1:5,000 and HRP-conjugated goat anti-rabbit secondary antibody 1:20,000 respectively. Image was developed using FeQ™ ECL Substrate Kit .



Western blotting analysis using anti-histone H1.0 antibody 1:5,000 and HRP-conjugated goat anti-rabbit secondary antibody 1:20,000 respectively. Image was developed using NaQ™ ECL Substrate Kit . H1-0, H1.0 Linker Histone.