



SunLong Biotech Co.,LTD
Tel: 0086-571- 56623320 Fax:0086-571- 56623318
E-mail:sales@sunlongbiotech.com
www.sunlongbiotech.com

[KD-Validated] Anti-Glutathione synthetase Rabbit Monoclonal Antibody

Cat No.: KD-10437

Aliases:

GSS; Glutathione Synthetase; Glutathione Synthase; GSH Synthetase; EC 6.3.2.3; GSH-S; HEL-S-64p; HEL-S-88n; GSHS

Background:

UniProt Entry: [P48637](#);NCBI Gene Entry: [2937](#)

Application Information

Molecular Weight: Predicted, 52 kDa, observed, 49 kDa Clonality: Rabbit monoclonal antibody Clone ID: 23GB4385 Species Reactivity: Human, Mouse, Rat Applications Tested: Western Blotting (WB), Flow Cytometry (FCM), Immunocytochemistry (IC)

Immunogen

A synthesized peptide derived from human Glutathione Synthetase

Isotype

Rabbit IgG

Storage Buffer

Supplied in PBS (pH 7.4) containing 50% glycerol, and 0.02% sodium azide.

Storage

Store at -20 °C for one year.

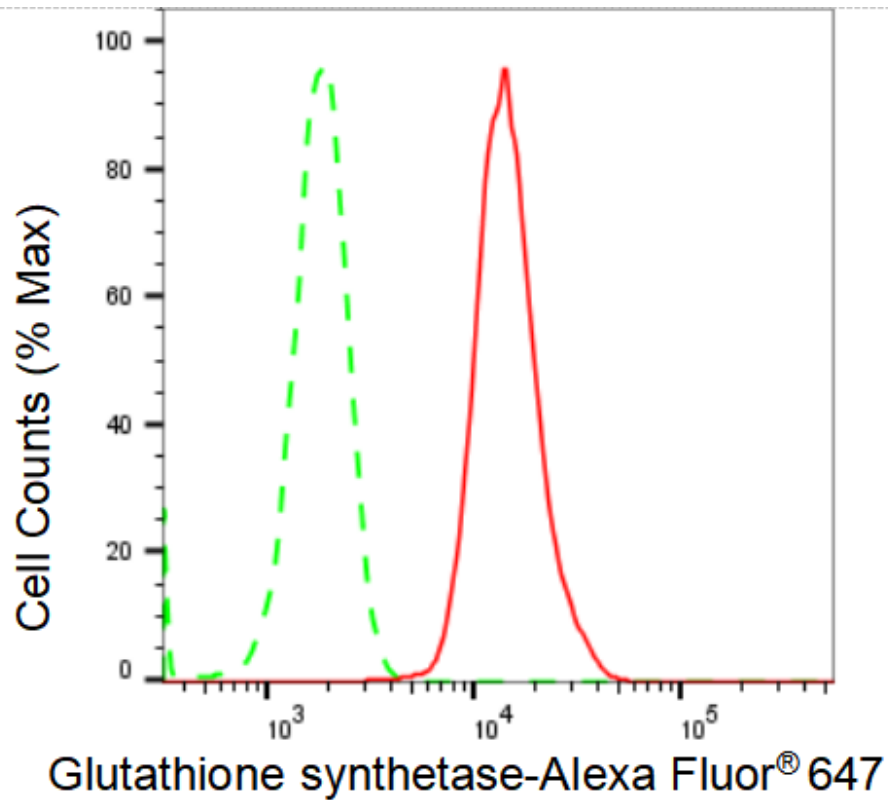
Recommended Dilutions

Western Blotting (WB): 1:1,000-1:5,000 Flow Cytometry (FCM): 1:2,000

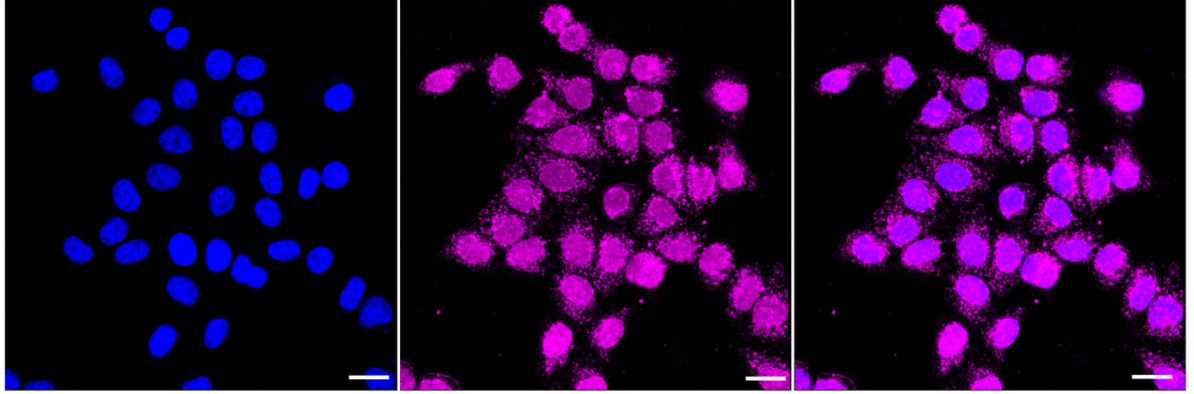
Immunocytochemistry (IC): 1:1,000

Protocols

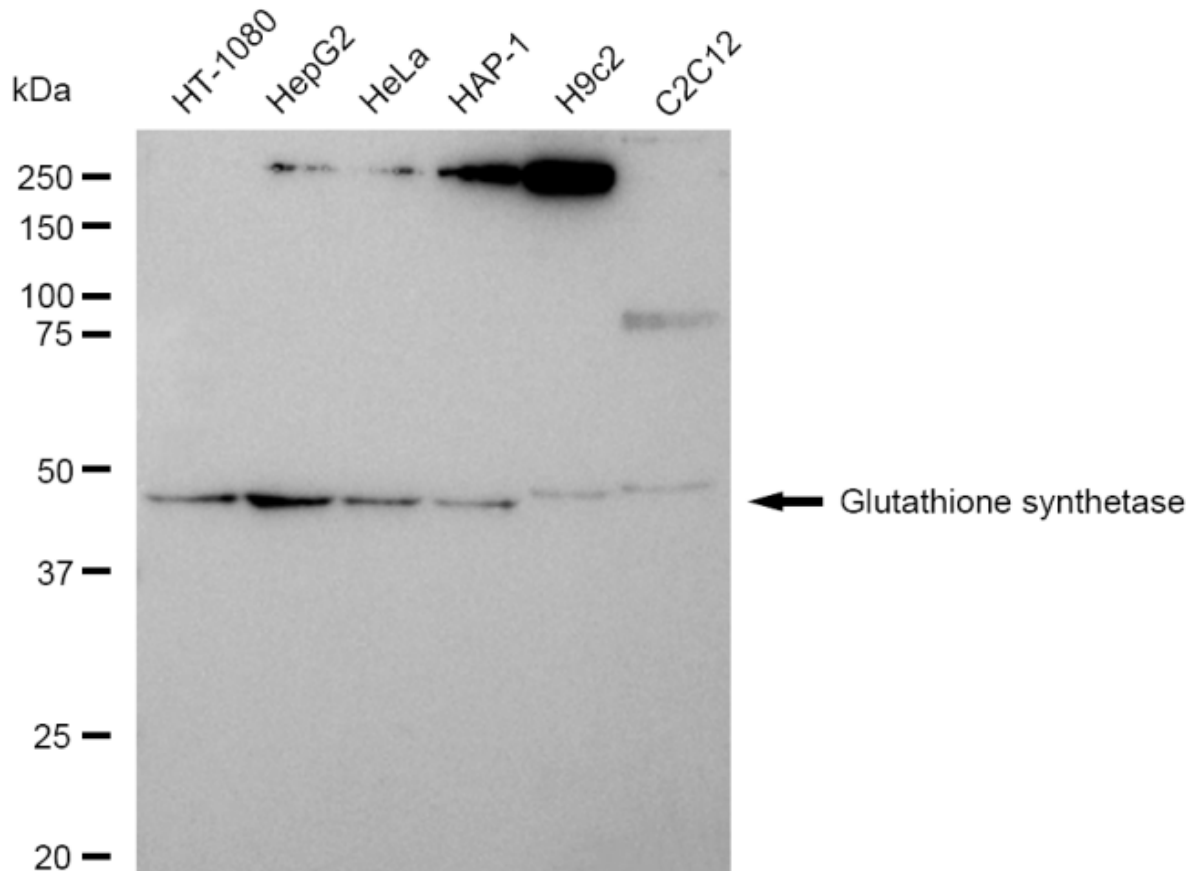
For general and specific antibody protocols please visit our website. Read all instructions before using this product.



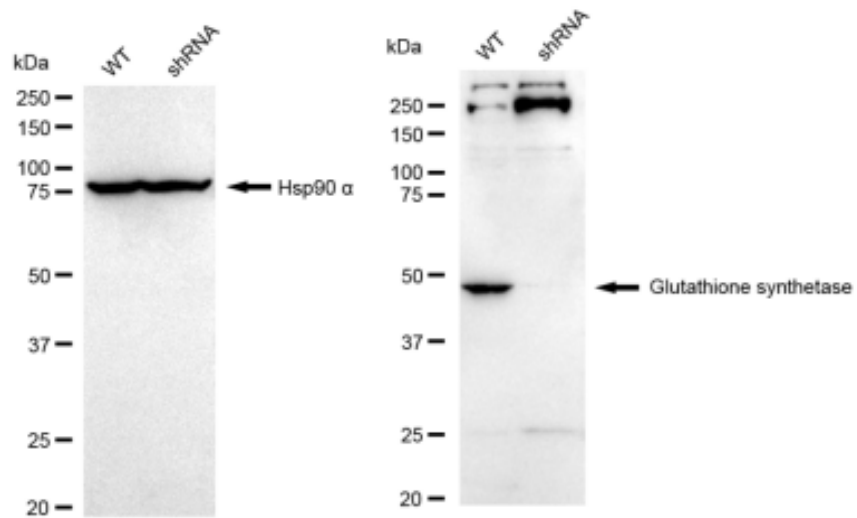
Flow cytometric analysis of Glutathione synthetase expression in HepG2 cells using Glutathione synthetase antibody 1:2,000. Green, isotype control; red, Glutathione synthetase.



Immunocytochemical staining of HepG2 cells with Glutathione synthetase antibody 1:1,000. Nuclei were stained blue with DAPI; Glutathione synthetase was stained magenta with Alexa Fluor® 647. Images were taken using Leica stellaris 5. Protein abundance based on laser Intensity and smart gain: Medium. Scale bar: 20 μ m.



Western blotting analysis using anti-Glutathione synthetase antibody 1:5,000 and HRP-conjugated goat anti-rabbit secondary antibody 1:20,000 respectively. Image was developed using FeQ™ ECL Substrate Kit .



Western blotting analysis using anti-Glutathione Synthetase antibody 1:5,000 and HRP-conjugated goat anti-rabbit secondary antibody 1:20,000 respectively. Image was developed using FeQ™ ECL Substrate Kit .