



SunLong Biotech Co.,LTD  
Tel: 0086-571- 56623320 Fax:0086-571- 56623318  
E-mail:sales@sunlongbiotech.com  
www.sunlongbiotech.com

## **[KD-Validated] Anti-Glutathione-disulfide reductase Rabbit Monoclonal Antibody**

Cat No.: KD-10436

### **Aliases:**

GSR; Glutathione-Disulfide Reductase; Glutathione Reductase, Mitochondrial; Glutathione S-Reductase; EC 1.8.1.7; GRase; GR; Epididymis Secretory Sperm Binding Protein Li 122m; Epididymis Luminal Protein 75; Glutathione Reductase; HEL-S-122m; EC 1.8.1; HEL-75; GSRD; GLUR; GRD1

### **Background:**

UniProt Entry: [P00390](#);NCBI Gene Entry: [2936](#)

### **Application Information**

Molecular Weight: Predicted, 56 kDa, observed, 50 kDa Clonality: Rabbit monoclonal antibody Clone ID: 23GB2845 Species Reaceivity: Human, Mouse Applicseions Tsted: Western Blotting (WB), Flow Cytometry (FCM), Immunocytochemistry (IC)

### **Immunogen**

A synthesized peptide derived from human GLUR

### **Isotype**

Rabbit IgG

### **Storage Buffer**

Supplied in PBS (pH 7.4) containing 50% glycerol, and 0.02% sodium azide.

### Storage

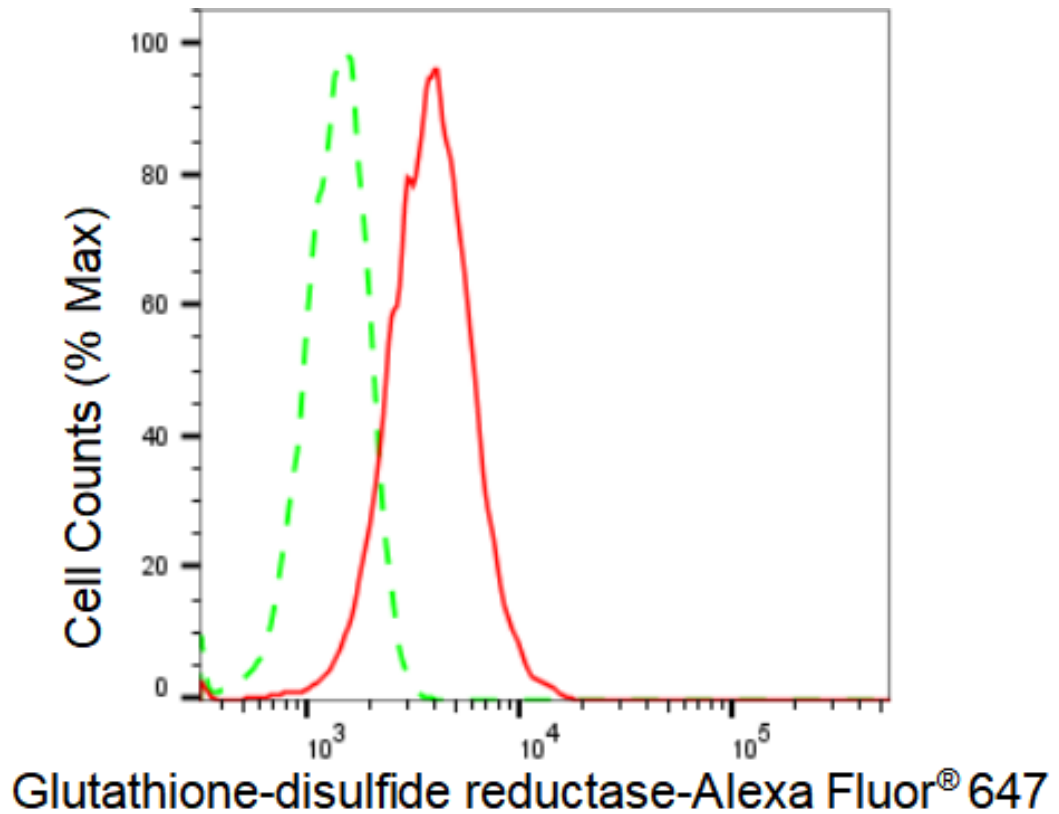
Store at -20 °C for one year.

### Recommended Dilutions

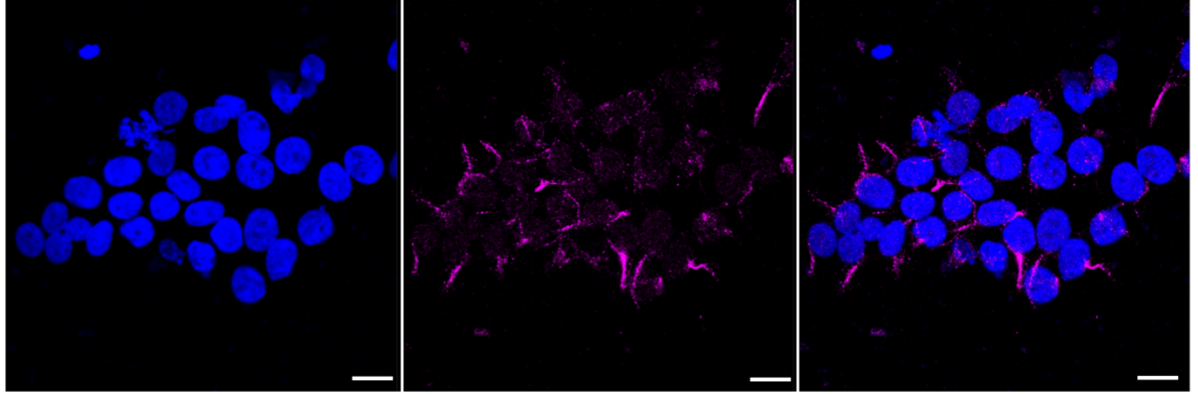
Western Blotting (WB): 1:1,000-1:5,000 Flow Cytometry (FCM): 1:2,000  
Immunocytochemistry (IC): 1:1,000

### Protocols

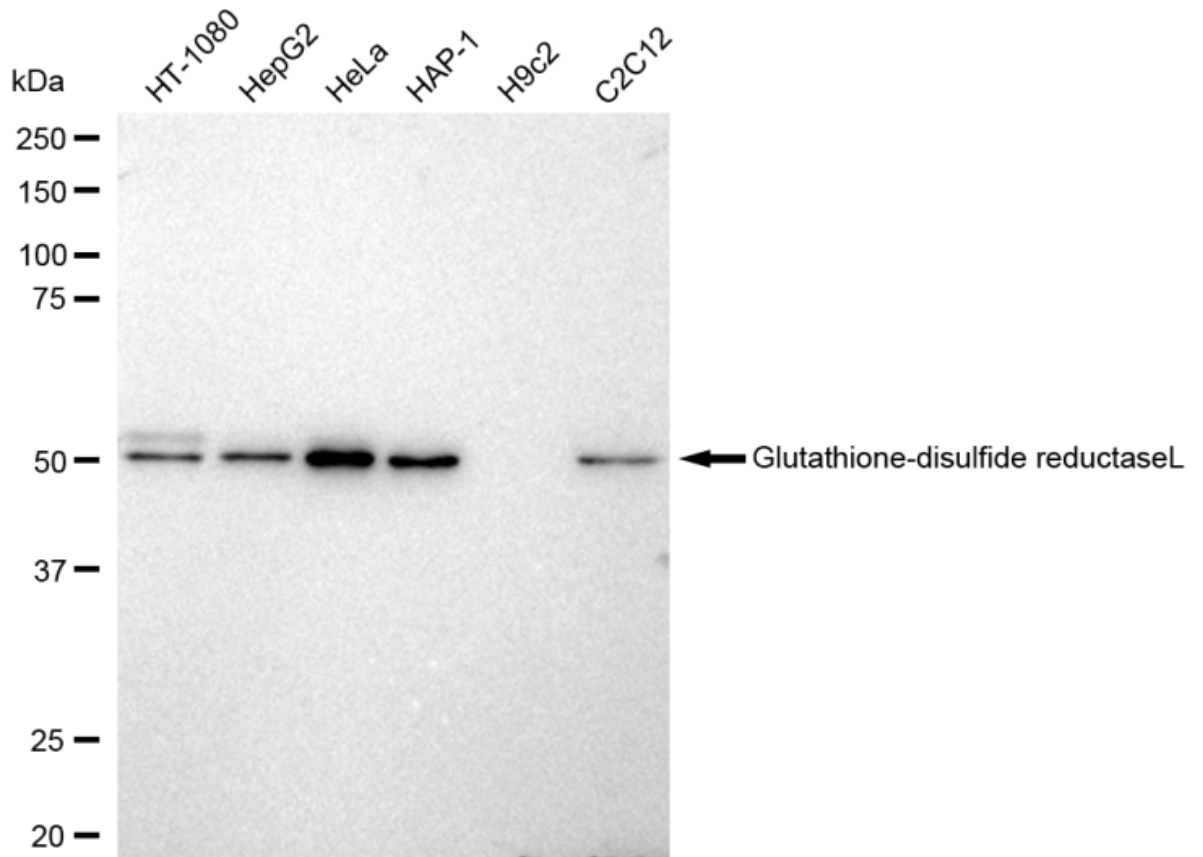
For general and specific antibody protocols please visit our website. Read all instructions before using this product.



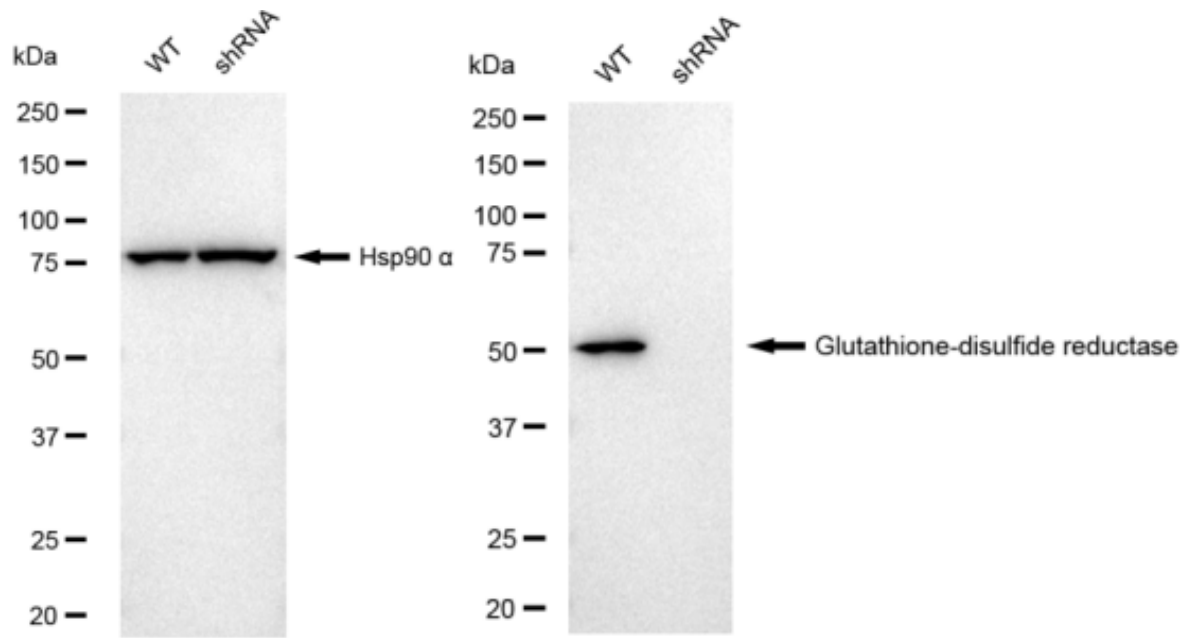
Flow cytometric analysis of Glutathione-disulfide reductase expression in HeLa cells using Glutathione-disulfide reductase antibody 1:2,000. Green, isotype control; red, Glutathione-disulfide reductase.



Immunocytochemical staining of HeLa cells with Glutathione-disulfide reductase antibody 1:1,000. Nuclei were stained blue with DAPI; Glutathione-disulfide reductase was stained magenta with Alexa Fluor® 647. Images were taken using Leica stellaris 5. Protein abundance based on laser Intensity and smart gain: Very low. Scale bar: 20 µm.



Western blotting analysis using anti-Glutathione-disulfide reductase antibody 1:5,000 and HRP-conjugated goat anti-rabbit secondary antibody 1:20,000 respectively. Image was developed using FeQ™ ECL Substrate Kit .



Western blotting analysis using anti-Glutathione-disulfide reductase antibody 1:5,000 and HRP-conjugated goat anti-rabbit secondary antibody 1:20,000 respectively. Image was developed using FeQ™ ECL Substrate Kit .