



SunLong Biotech Co.,LTD  
Tel: 0086-571- 56623320 Fax:0086-571- 56623318  
E-mail:sales@sunlongbiotech.com  
www.sunlongbiotech.com

## **[KD-Validated] Anti-Glycogen synthase kinase 3 beta Rabbit Monoclonal Antibody**

Cat No.: KD-10433

### **Aliases:**

Glycogen Synthase Kinase 3 Beta; Serine/Threonine-Protein Kinase GSK3B; Glycogen Synthase Kinase-3 Beta; EC 2.7.11.26; GSK-3 Beta; EC 2.7.11.1; EC 2.7.11

### **Background:**

UniProt Entry: [P49841](#);NCBI Gene Entry: [2932](#)

### **Application Information**

Molecular Weight: Predicted, 47 kDa, observed, 40 kDa Clonality: Rabbit monoclonal antibody Clone ID: 23GB1250 Species Reactivity: Human, Mouse, Rat Applications Tested: Western Blotting (WB), Flow Cytometry (FCM), Immunocytochemistry (IC)

### **Immunogen**

A synthesized peptide derived from human GSK3 beta

### **Isotype**

Rabbit IgG

### **Storage Buffer**

Supplied in PBS (pH 7.4) containing 50% glycerol, and 0.02% sodium azide.

### **Storage**

Store at -20 °C for one year.

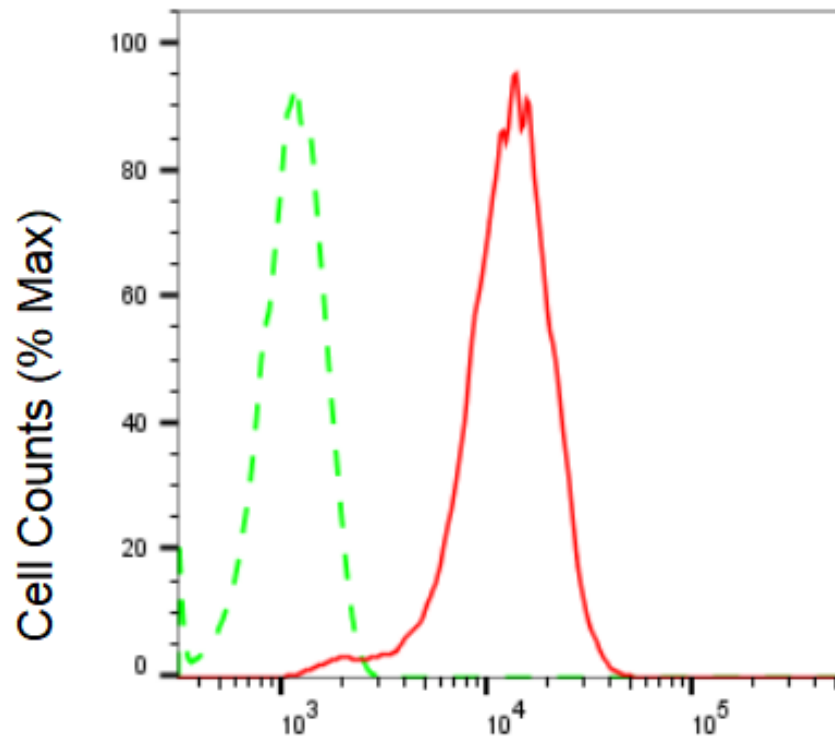
#### Recommended Dilutions

Western Blotting (WB): 1:1,000-1:5,000 Flow Cytometry (FCM): 1:2,000

Immunocytochemistry (IC): 1:1,000

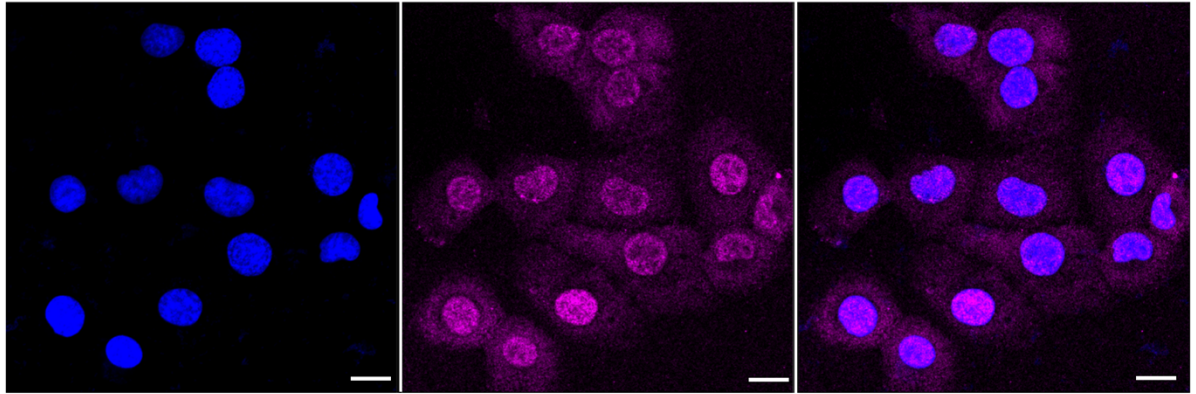
#### Protocols

For general and specific antibody protocols please visit our website. Read all instructions before using this product.

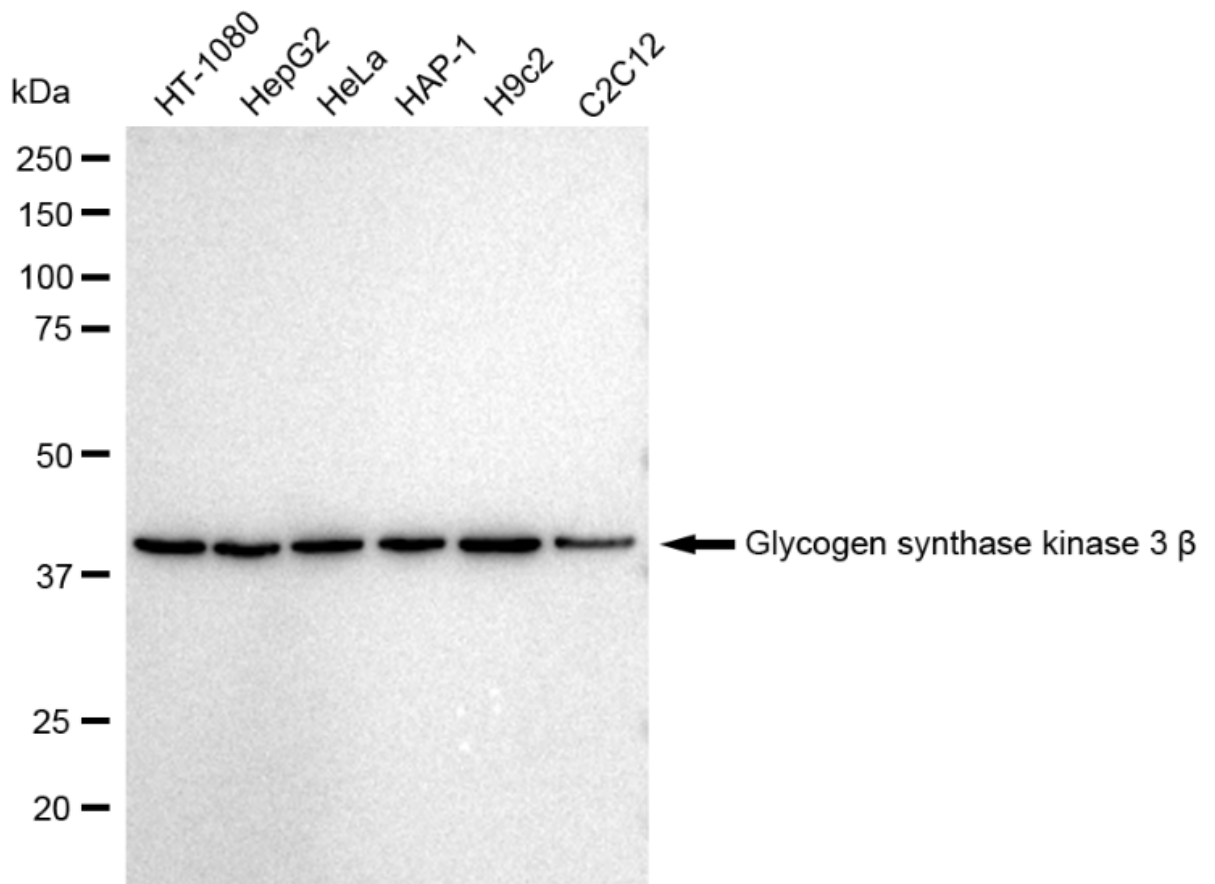


### Glycogen synthase kinase 3 beta-Alexa Fluor® 647

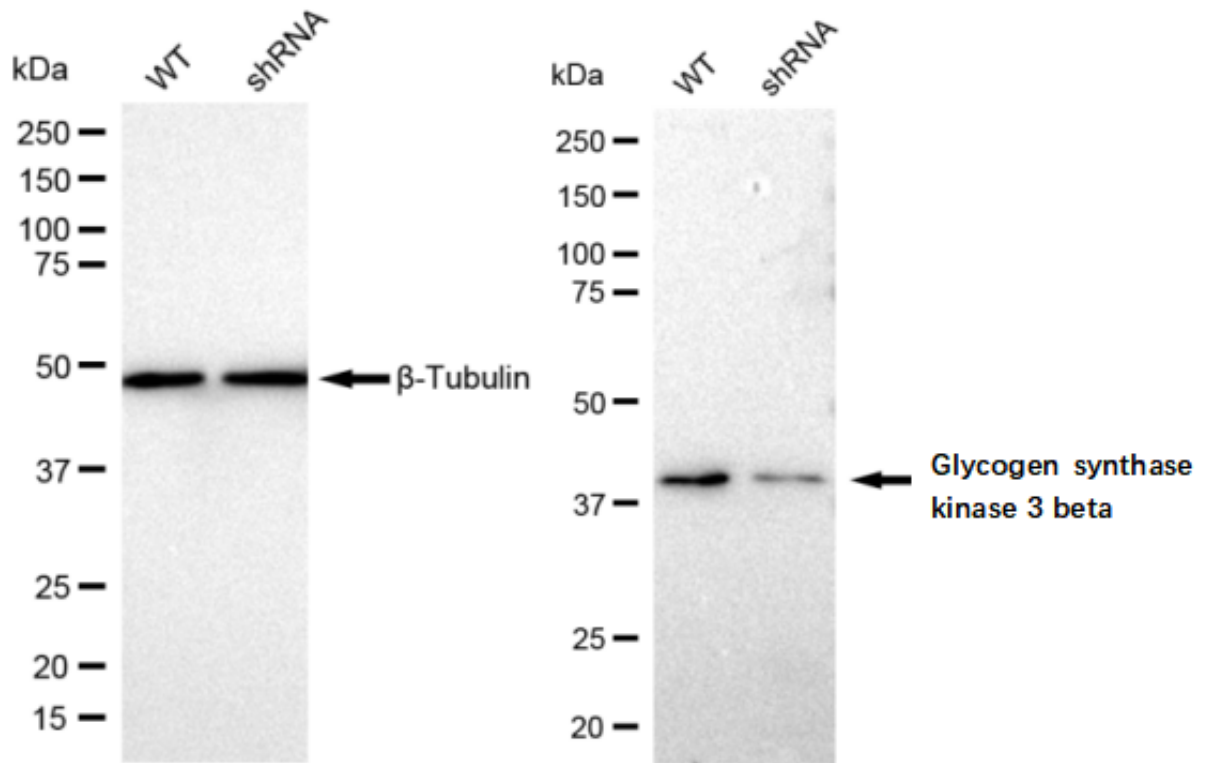
Flow cytometric analysis of Glycogen synthase kinase 3 beta expression in HepG2 cells using Glycogen synthase kinase 3 beta antibody 1:2,000. Green, isotype control; red, Glycogen synthase kinase 3 beta.



Immunocytochemical staining of HT-1080 cells with Glycogen synthase kinase 3 beta antibody 1:1,000. Nuclei were stained blue with DAPI; Glycogen synthase kinase 3 beta was stained magenta with Alexa Fluor® 647. Images were taken using Leica stellaris 5. Protein abundance based on laser Intensity and smart gain: Medium. Scale bar: 20  $\mu$ m.



Western blotting analysis using anti-Glycogen synthase kinase 3 beta antibody 1:5,000 and HRP-conjugated goat anti-rabbit secondary antibody 1:20,000 respectively. Image was developed using FeQ™ ECL Substrate Kit .



Western blotting analysis using anti-Glycogen synthase kinase 3 beta antibody 1:5,000 and HRP-conjugated goat anti-rabbit secondary antibody 1:20,000 respectively. Image was developed using FeQ™ ECL Substrate Kit .