



SunLong Biotech Co.,LTD
Tel: 0086-571- 56623320 Fax:0086-571- 56623318
E-mail:sales@sunlongbiotech.com
www.sunlongbiotech.com

[KD-Validated] Anti-GSK3 alpha/beta Rabbit Monoclonal Antibody

Cat No.: KD-10432

Aliases:

Glycogen Synthase Kinase 3 Alpha; Glycogen Synthase Kinase-3 Alpha;
Serine/Threonine-Protein Kinase GSK3A; EC 2.7.11.1;GSK-3 Alpha; EC 2.7.11; EC
2.7.11.26

Background:

UniProt Entry: [P49840](#);NCBI Gene Entry: [2931](#)

Application Information

Molecular Weight: Predicted, 51 kDa, observed, 51,47 kDa Clonality: Rabbit monoclonal
antibody Clone ID: 23GB1100 Species Reactivity: Human, Mouse, Rat Applications
Tested: Western Blotting (WB), Flow Cytometry (FCM), Immunocytochemistry (IC)

Immunogen

Recombinant protein of human GSK3 alpha

Isotype

Rabbit IgG

Storage Buffer

Supplied in PBS (pH 7.4) containing 50% glycerol, and 0.02% sodium azide.

Storage

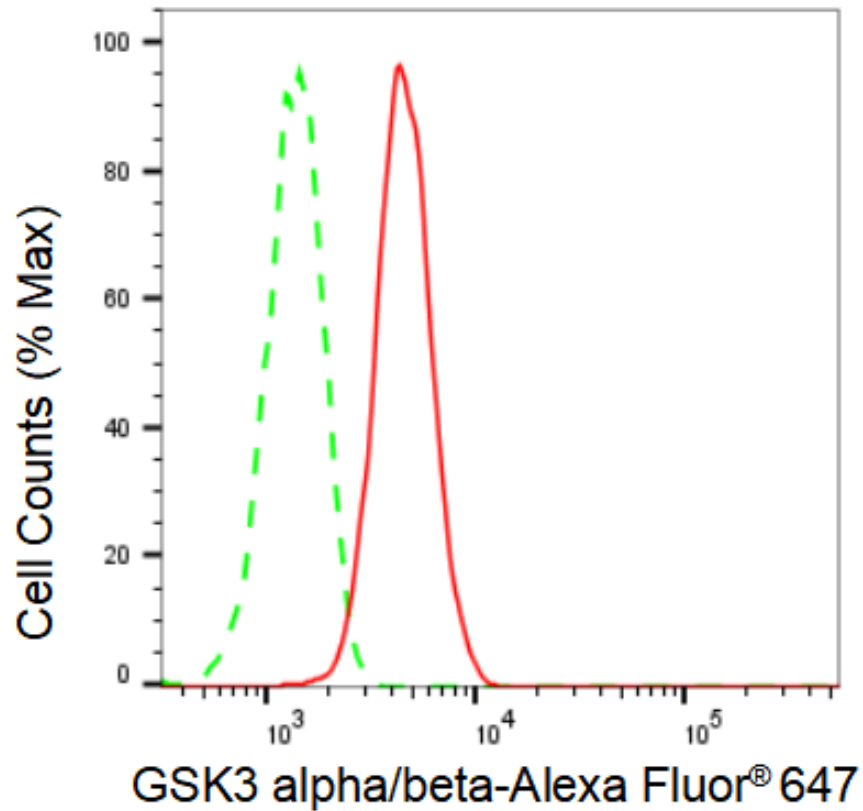
Store at -20 °C for one year.

Recommended Dilutions

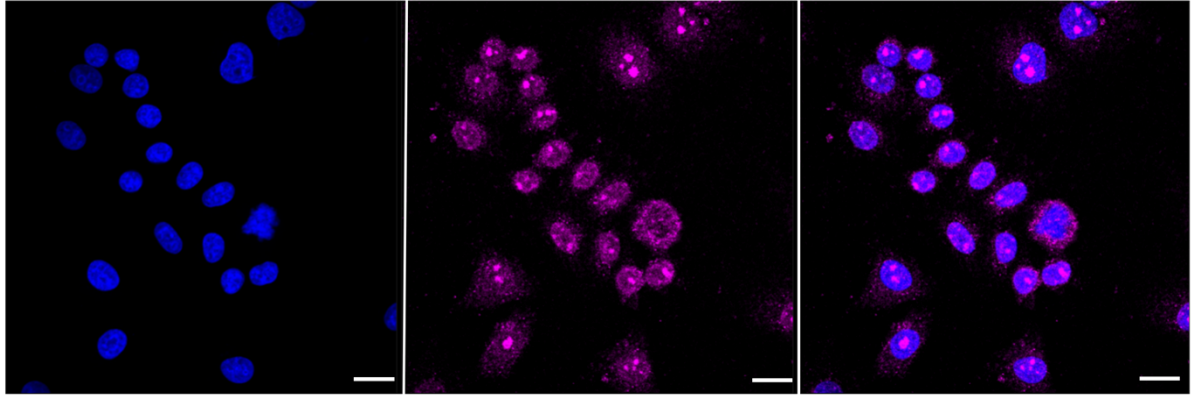
Western Blotting (WB): 1:1,000-1:2,500 Flow Cytometry (FCM): 1:2,000
Immunocytochemistry (IC): 1:1,000

Protocols

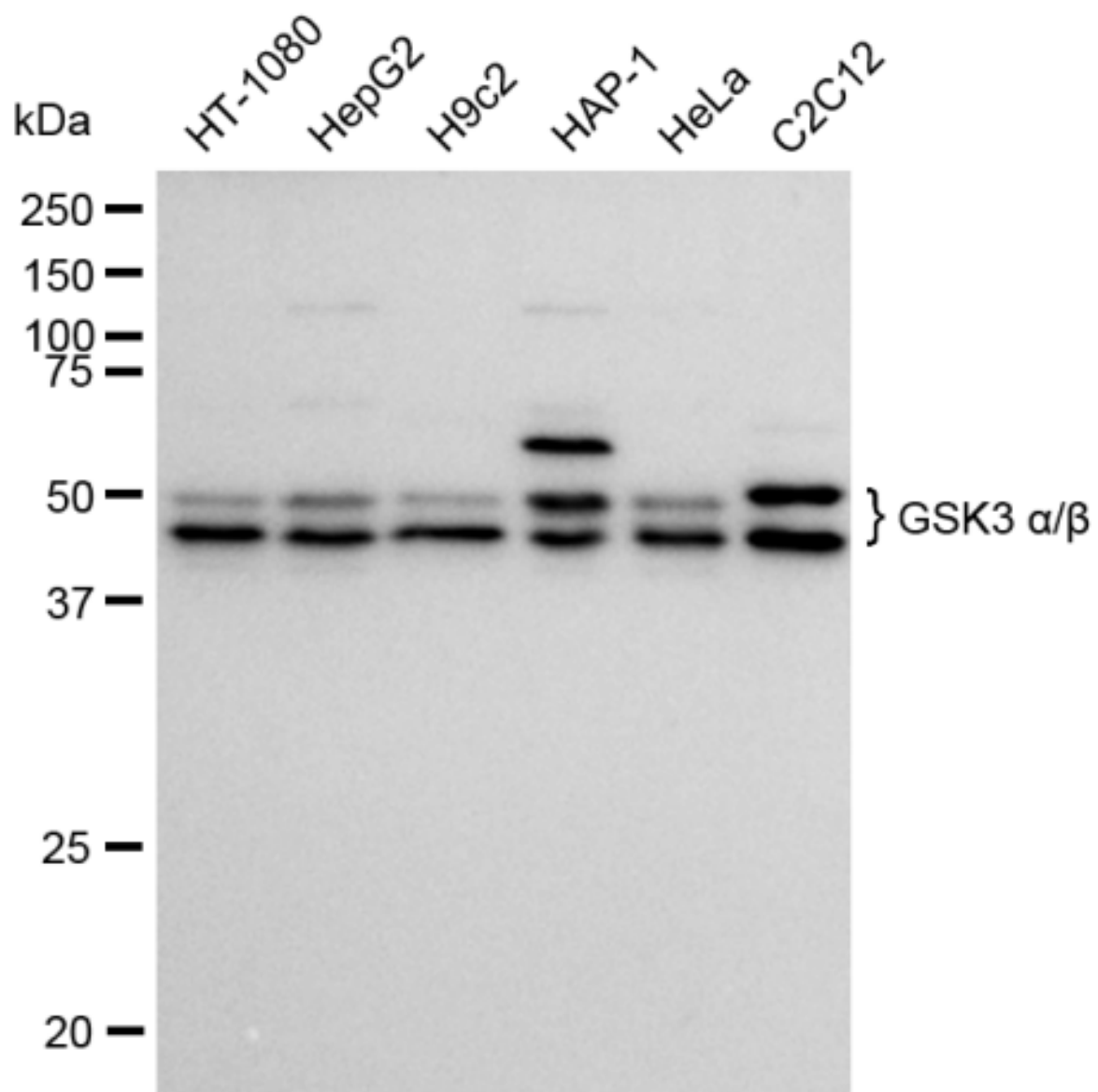
For general and specific antibody protocols please visit our website. Read all instructions before using this product.



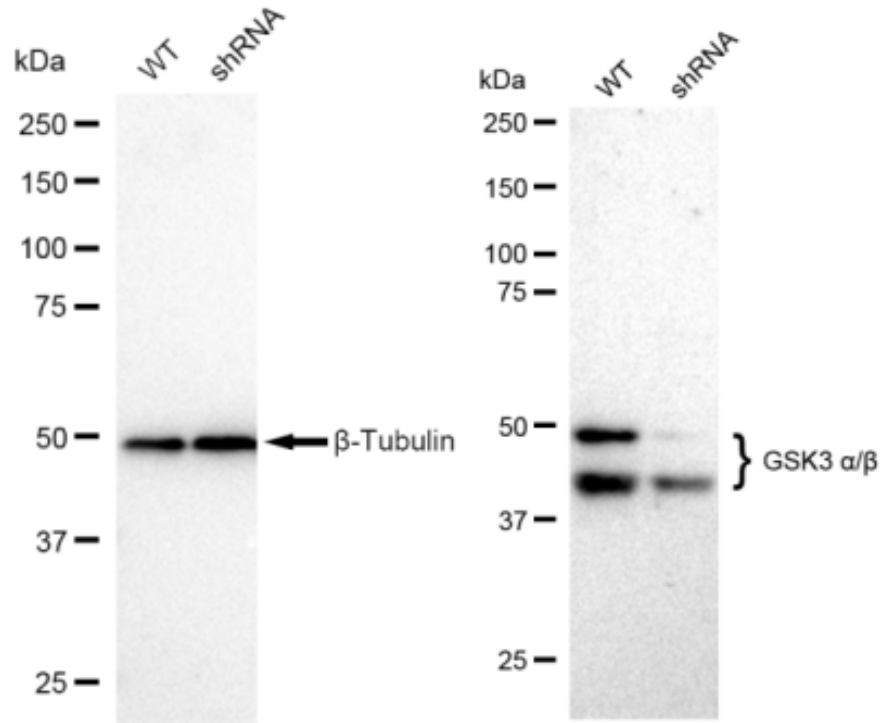
Flow cytometric analysis of GSK3 alpha/beta expression in HepG2 cells using GSK3 alpha/beta antibody 1:2,000. Green, isotype control; red, GSK3 alpha/beta.



Immunocytochemical staining of HepG2 cells with GSK3 alpha/beta antibody 1:1,000. Nuclei were stained blue with DAPI; GSK3 alpha/beta was stained magenta with Alexa Fluor® 647. Images were taken using Leica stellaris 5. Protein abundance based on laser Intensity and smart gain: Medium. Scale bar: 20 μ m.



Western blotting analysis using anti-GSK3 alpha/beta antibody 1:2,500 and HRP-conjugated goat anti-rabbit secondary antibody 1:50,000 respectively. Image was developed using FeQ™ ECL Substrate Kit .



Western blotting analysis using anti-GSK3 α / antibody 1:2,500 and HRP-conjugated goat anti-rabbit secondary antibody respectively. Image was developed using FeQTM ECL Substrate Kit .