



SunLong Biotech Co.,LTD  
Tel: 0086-571- 56623320 Fax:0086-571- 56623318  
E-mail:sales@sunlongbiotech.com  
www.sunlongbiotech.com

## **[KD-Validated] Anti-GSK3 alpha Rabbit Monoclonal Antibody**

Cat No.: KD-10431

### **Aliases:**

Glycogen Synthase Kinase 3 Alpha; Serine/Threonine-Protein Kinase GSK3A; Glycogen Synthase Kinase-3 Alpha; EC 2.7.11.26; GSK-3 Alpha; EC 2.7.11.1; EC 2.7.11

### **Background:**

UniProt Entry: [P49840](#);NCBI Gene Entry: [2931](#)

### **Application Information**

Molecular Weight: Predicted, 51 kDa, observed, 51 kDa Clonality: Rabbit monoclonal antibody Clone ID: 23GB855 Species Reactivity: Human, Mouse, Rat Applications Tested: Western Blotting (WB), Flow Cytometry (FCM), Immunocytochemistry (IC)

### **Immunogen**

A synthesized peptide derived from human GSK3A

### **Isotype**

Rabbit IgG

### **Storage Buffer**

Supplied in PBS (pH 7.4) containing 50% glycerol, and 0.02% sodium azide.

### **Storage**

Store at -20 °C for one year.

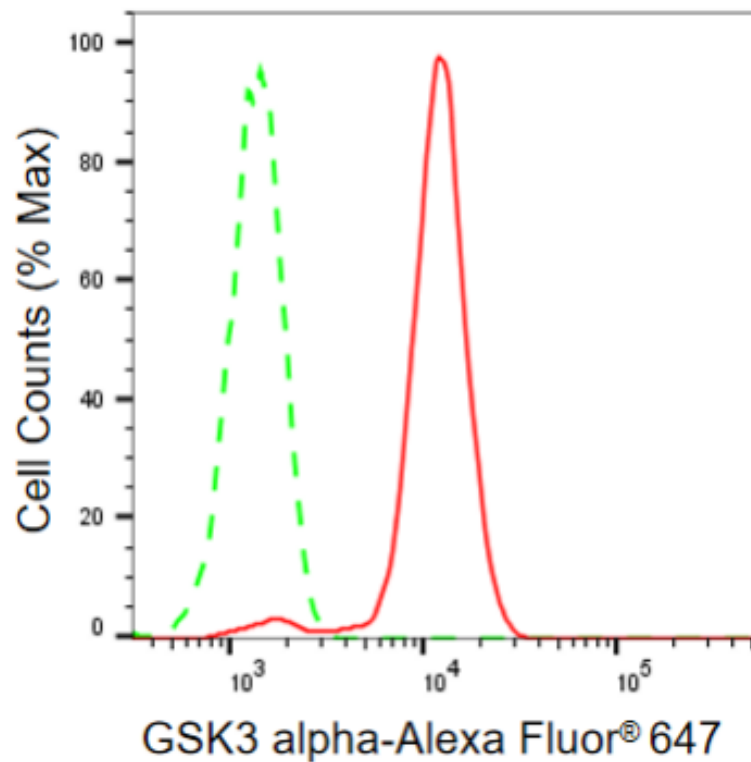
### Recommended Dilutions

Western Blotting (WB): 1:1,000-1:5,000 Flow Cytometry (FCM): 1:2,000

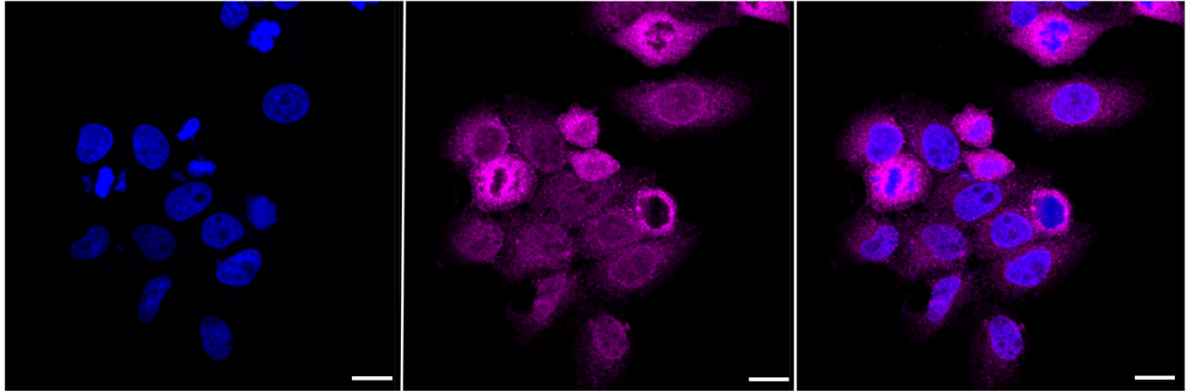
Immunocytochemistry (IC): 1:1,000

### Protocols

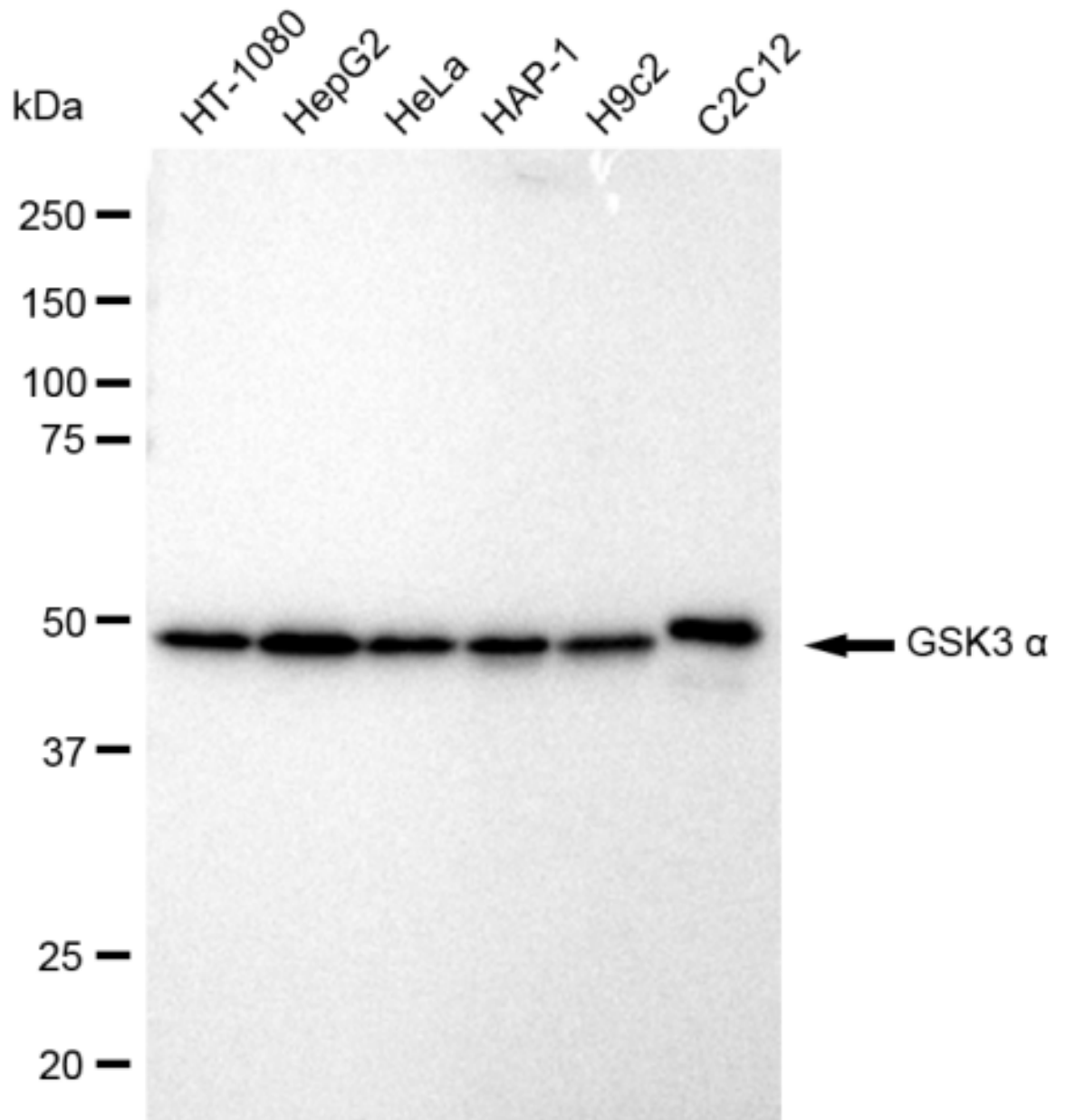
For general and specific antibody protocols please visit our website. Read all instructions before using this product.



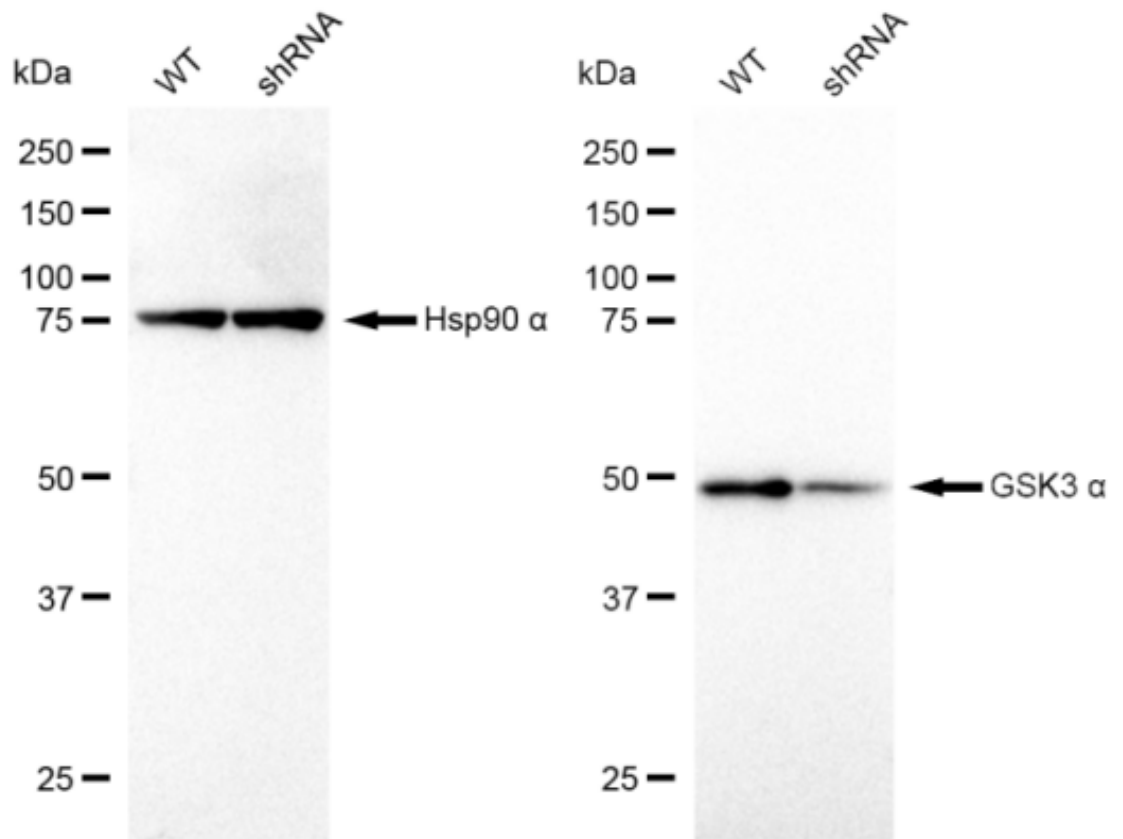
Flow cytometric analysis of GSK3 alpha expression in HepG2 cells using GSK3 alpha antibody 1:2,000. Green, isotype control; red, GSK3 alpha.



Immunocytochemical staining of HepG2 cells with GSK3 alpha antibody 1:1,000. Nuclei were stained blue with DAPI; GSK3 alpha was stained magenta with Alexa Fluor® 647. Images were taken using Leica stellaris 5. Protein abundance based on laser Intensity and smart gain: Medium. Scale bar: 20  $\mu$ m.



Western blotting analysis using anti-GSK3  $\alpha$  antibody 1:5,000 and HRP-conjugated goat anti-rabbit secondary antibody 1:50,000 respectively. Image was developed using FeQ<sup>TM</sup> ECL Substrate Kit .



Western blotting analysis using anti-GSK3 alpha antibody 1:5,000 and HRP-conjugated goat anti-rabbit secondary antibody 1:20,000 respectively. Image was developed using FeQ™ ECL Substrate Kit .