



SunLong Biotech Co.,LTD
Tel: 0086-571- 56623320 Fax:0086-571- 56623318
E-mail:sales@sunlongbiotech.com
www.sunlongbiotech.com

[KD-Validated] Anti-Phospho-GSK3 (alpha + beta)(Y216 + Y279) Rabbit Monoclonal Antibody

Cat No.: KD-10430

Aliases:

GSK3A; Glycogen Synthase Kinase 3 Alpha; Serine/Threonine-Protein Kinase GSK3A; Glycogen Synthase Kinase-3 Alpha; EC 2.7.11.26; GSK-3 Alpha; EC 2.7.11.1; EC 2.7.11

Background:

UniProt Entry: [P49840](#);NCBI Gene Entry: [2931](#)

Application Information

Molecular Weight: Predicted, 51 kDa, observed, 46,51 kDa Clonality: Rabbit monoclonal antibody Clone ID: 23GB4380 Species Reactivity: Human, Mouse, Rat Applications Tested: Western Blotting (WB), Flow Cytometry (FCM), Immunocytochemistry (IC)

Immunogen

A synthesized peptide derived from human Phospho-GSK3 (alpha + beta)(Y216 + Y279)

Isotype

Rabbit IgG

Storage Buffer

Supplied in PBS (pH 7.4) containing 50% glycerol, and 0.02% sodium azide.

Storage

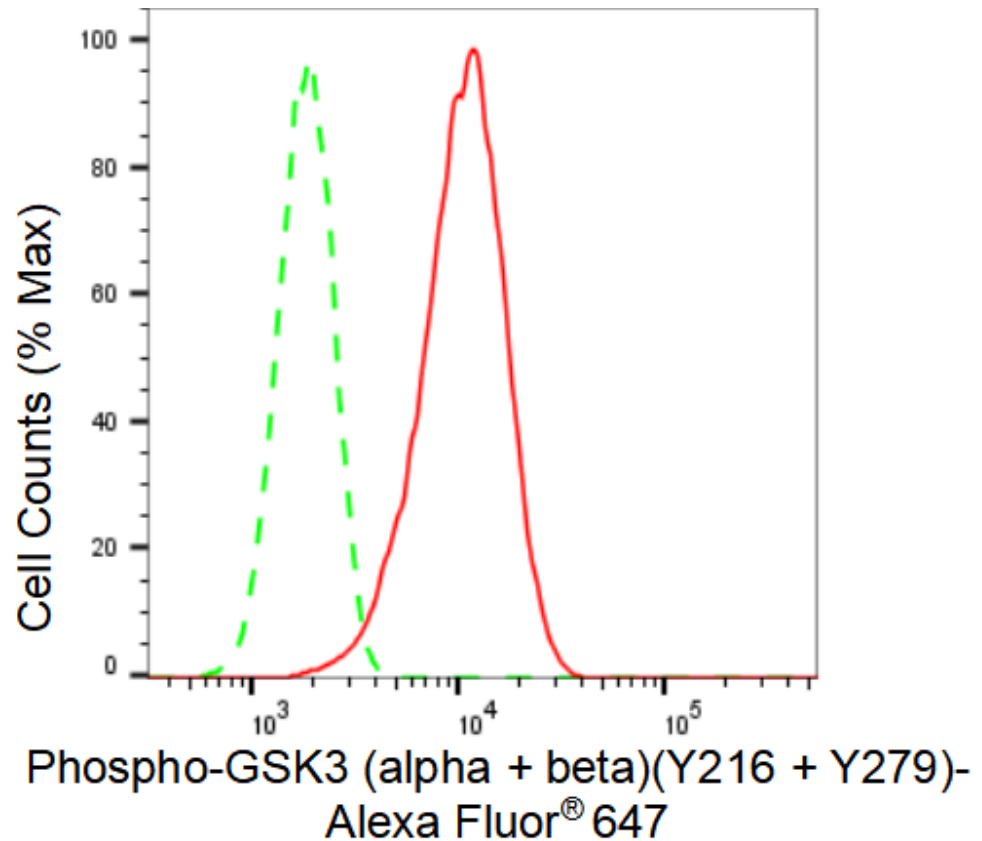
Store at -20 °C for one year.

Recommended Dilutions

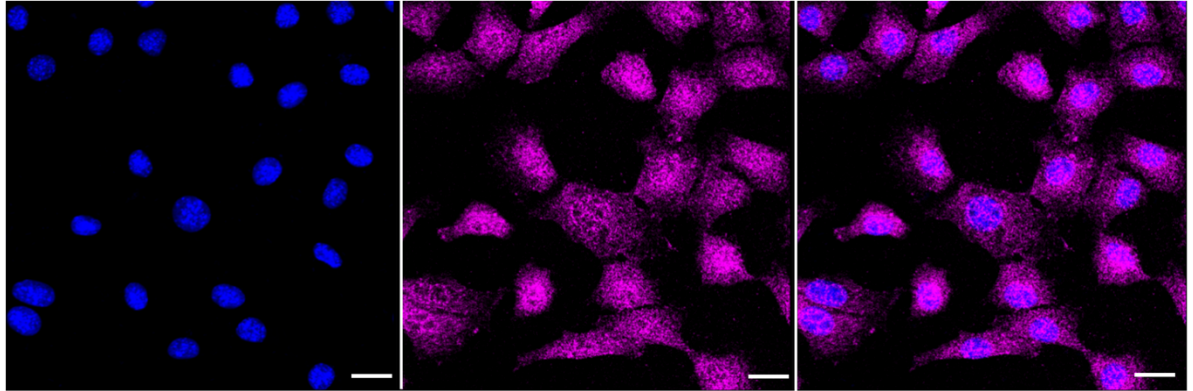
Western Blotting (WB): 1:1,000-1:5,000 Flow Cytometry (FCM): 1:2,000
Immunocytochemistry (IC): 1:1,000

Protocols

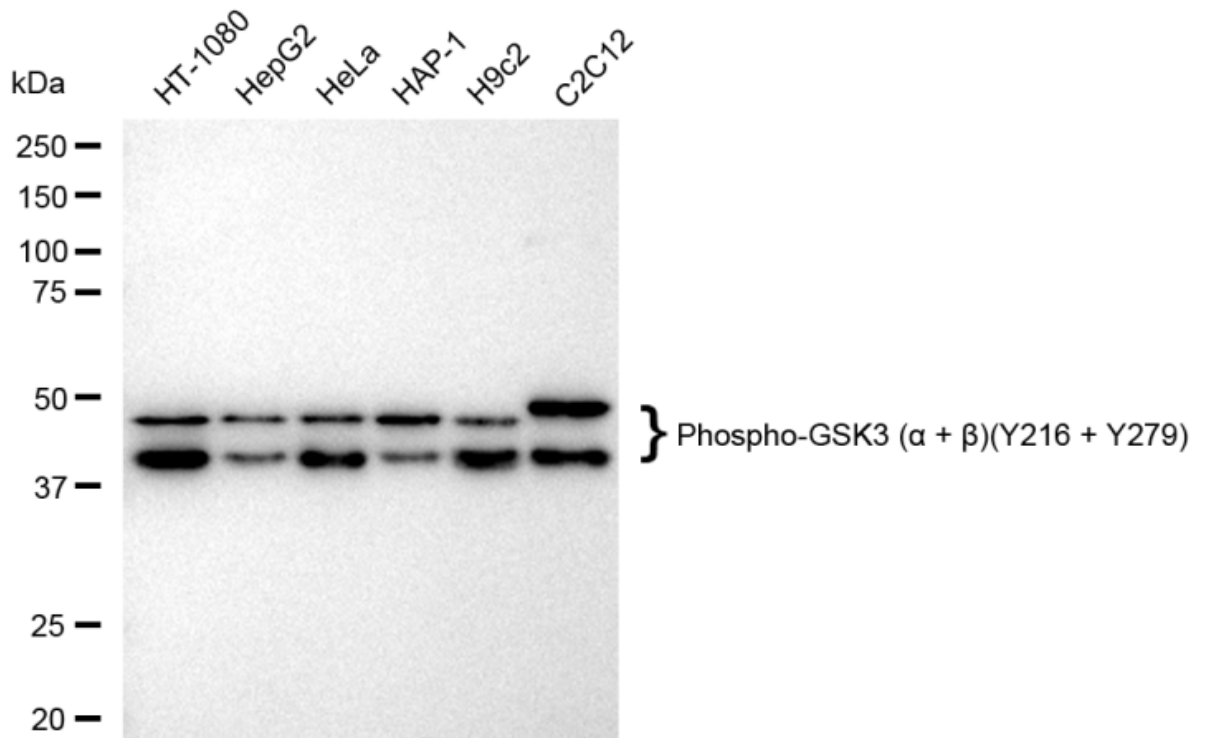
For general and specific antibody protocols please visit our website. Read all instructions before using this product.



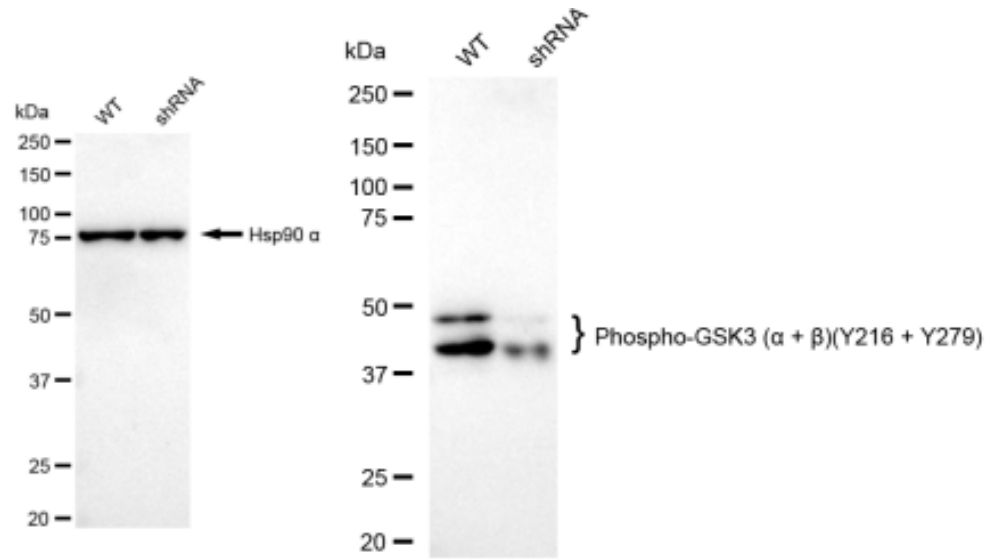
Flow cytometric analysis of Phospho-GSK3 (alpha + beta)(Y216 + Y279) expression in C2C12 cells using Phospho-GSK3 (alpha + beta)(Y216 + Y279) antibody 1:2,000. Green, isotype control; red, Phospho-GSK3 (alpha + beta)(Y216 + Y279).



Immunocytochemical staining of C2C12 cells with Phospho-GSK3 (alpha + beta)(Y216 + Y279) antibody 1:1,000. Nuclei were stained blue with DAPI; Phospho-GSK3 (alpha + beta)(Y216 + Y279) was stained magenta with Alexa Fluor® 647. Images were taken using Leica stellaris 5. Protein abundance based on laser Intensity and smart gain: Medium. Scale bar: 20 μ m.



Western blotting analysis using anti-Phospho-GSK3 (alpha + beta)(Y216 + Y279) antibody 1:5,000 and HRP-conjugated goat anti-rabbit secondary antibody 1:20,000 respectively. Image was developed using FeQ™ ECL Substrate Kit .



Western blotting analysis using anti-Phospho-GSK3 ($\alpha + \beta$)(Y216 + Y279) antibody 1:5,000 and HRP-conjugated goat anti-rabbit secondary antibody 1:20,000 respectively. Image was developed using FeQ™ ECL Substrate Kit .