



SunLong Biotech Co.,LTD
Tel: 0086-571- 56623320 Fax:0086-571- 56623318
E-mail:sales@sunlongbiotech.com
www.sunlongbiotech.com

[KD-Validated] Anti-Goosecoid homeobox Rabbit Monoclonal Antibody

Cat No.: KD-10429

Aliases:

GSC; Goosecoid Homeobox; Homeobox Protein Goosecoid; GSC1; SAMS

Background:

UniProt Entry: [P56915](#);NCBI Gene Entry: [145258](#)

Application Information

Molecular Weight: Predicted, 28 kDa, observed, 28 kDa Clonality: Rabbit monoclonal antibody Clone ID: 23GB6470 Species Reactivity: Human, Mouse, Rat Applications Tested: Western Blotting (WB)

Immunogen

A synthesized peptide derived from human GSC

Isotype

Rabbit IgG

Storage Buffer

Supplied in PBS (pH 7.4) containing 50% glycerol, and 0.02% sodium azide.

Storage

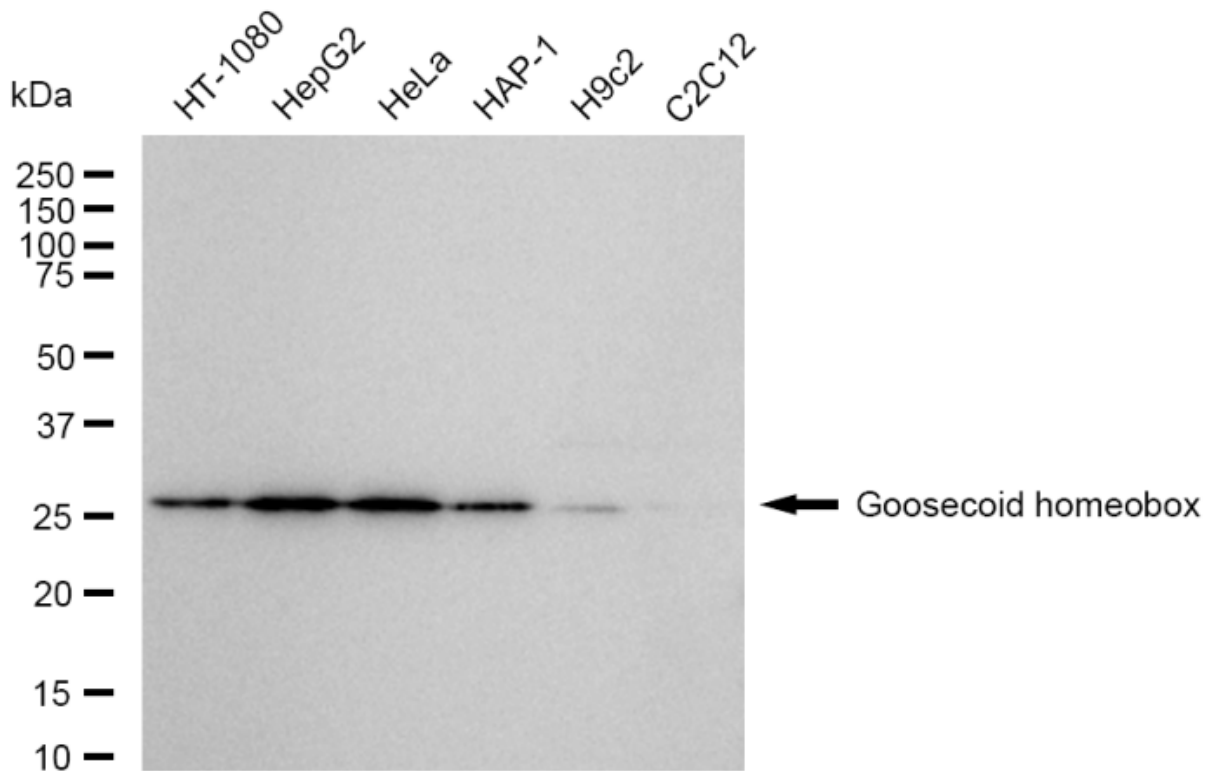
Store at -20 °C for one year.

Recommended Dilutions

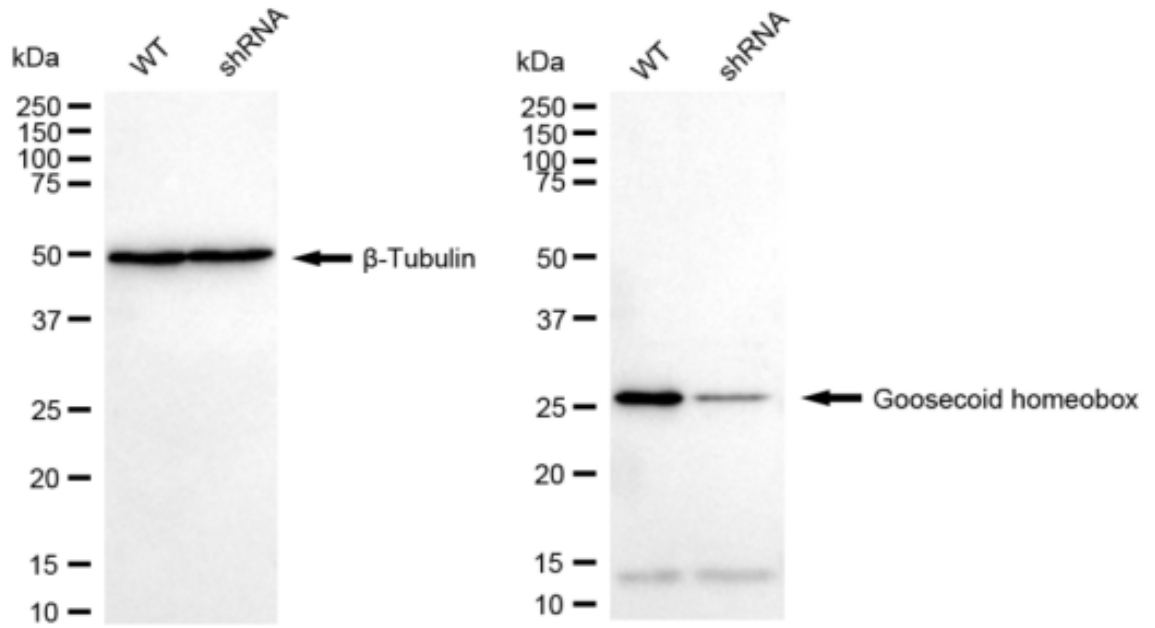
Western Blotting (WB): 1:1,000-1:5,000

Protocols

For general and specific antibody protocols please visit our website. Read all instructions before using this product.



Western blotting analysis using anti-Goosecoid homeobox antibody 1:5,000 and HRP-conjugated goat anti-rabbit secondary antibody 1:20,000 respectively. Image was developed using FeQ™ ECL Substrate Kit .



Western blotting analysis using anti-Goosecoid homeobox antibody 1:5,000 and HRP-conjugated goat anti-rabbit secondary antibody 1:20,000 respectively. Image was developed using FeQ™ ECL Substrate Kit .