



SunLong Biotech Co.,LTD  
Tel: 0086-571- 56623320 Fax:0086-571- 56623318  
E-mail:sales@sunlongbiotech.com  
www.sunlongbiotech.com

## **[KD-Validated] Anti-G-rich RNA sequence binding factor 1 Rabbit Monoclonal Antibody**

Cat No.: KD-10428

### **Aliases:**

GRSF1; G-Rich RNA Sequence Binding Factor 1; G-Rich Sequence Factor 1; GRSF-1

### **Background:**

UniProt Entry: [Q12849](#);NCBI Gene Entry: [2926](#)

### **Application Information**

Molecular Weight: Predicted, 53 kDa, observed, 53 kDa Clonality: Rabbit monoclonal antibody Clone ID: 23GB1660 Species Reactivity: Human Applications Used: Western Blotting (WB), Flow Cytometry (FCM), Immunocytochemistry (IC)

### **Immunogen**

A synthesized peptide derived from human GRSF1

### **Isotype**

Rabbit IgG

### **Storage Buffer**

Supplied in PBS (pH 7.4) containing 50% glycerol, and 0.02% sodium azide.

### **Storage**

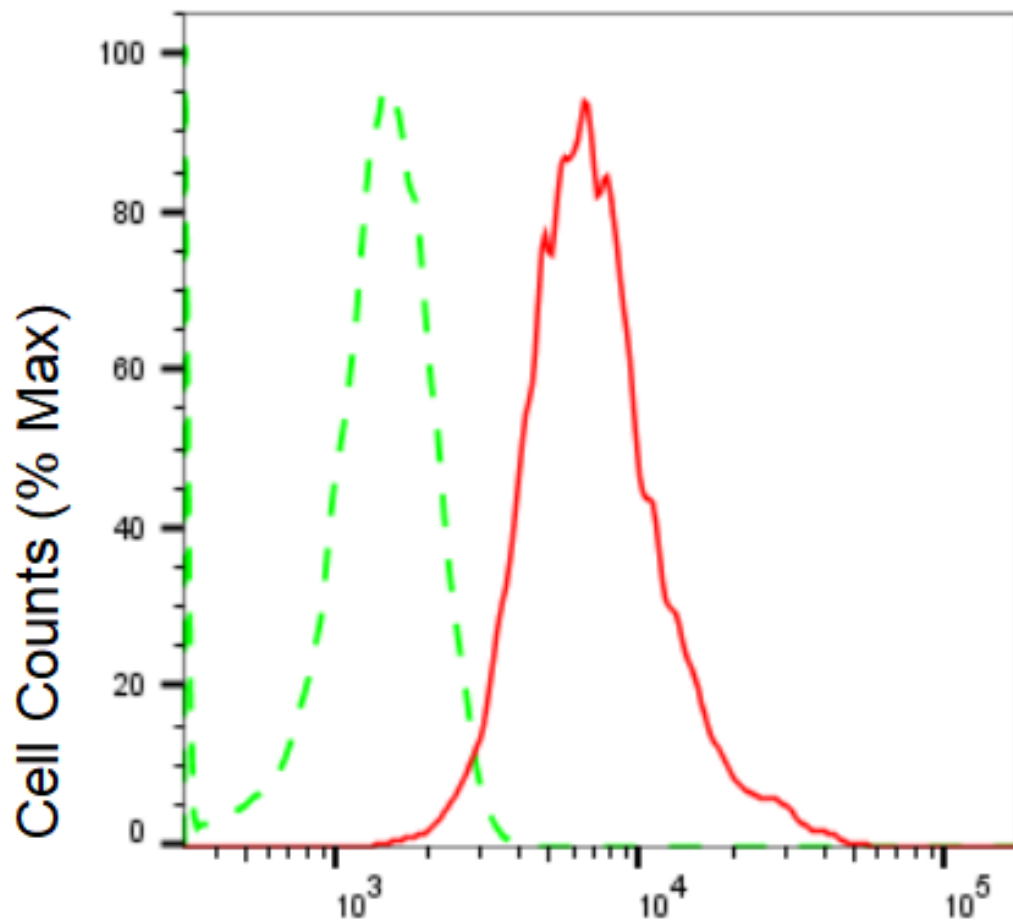
Store at -20 °C for one year.

#### Recommended Dilutions

Western Blotting (WB): 1:1,000-1:5,000 Flow Cytometry (FCM): 1:2,000  
Immunocytochemistry (IC): 1:1,000

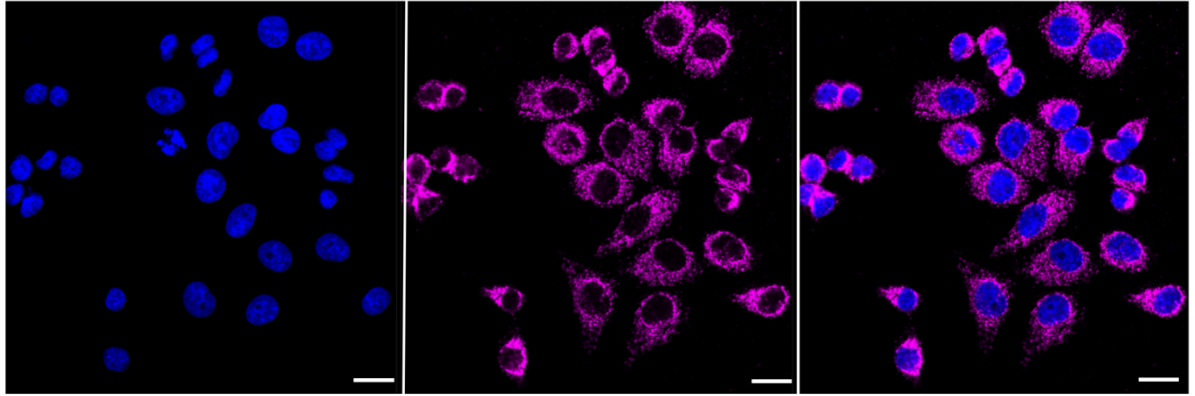
#### Protocols

For general and specific antibody protocols please visit our website. Read all instructions before using this product.

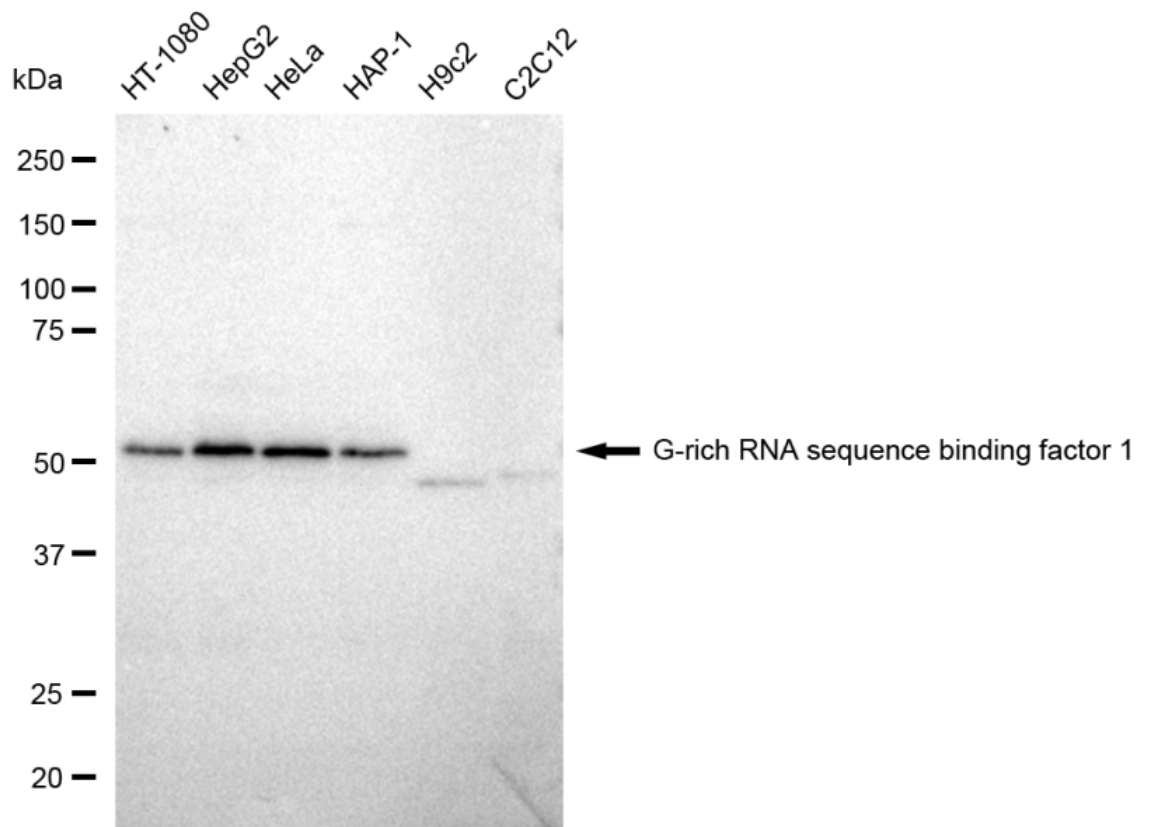


### G-rich RNA sequence binding factor 1-Alexa Fluor<sup>®</sup> 647

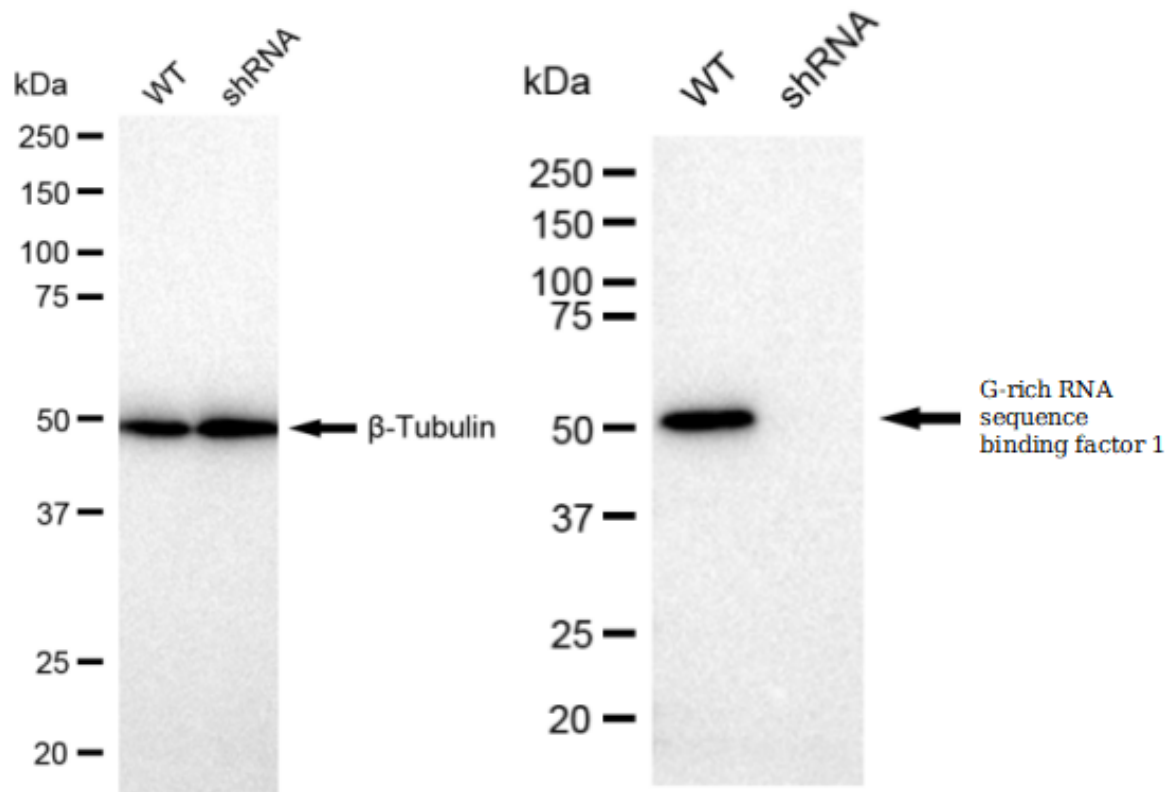
Flow cytometric analysis of G-rich RNA sequence binding factor 1 expression in HepG2 cells using G-rich RNA sequence binding factor 1 antibody 1:2,000. Green, isotype control; red, G-rich RNA sequence binding factor 1.



Immunocytochemical staining of HepG2 cells with G-rich RNA sequence binding factor 1 antibody 1:1,000. Nuclei were stained blue with DAPI; G-rich RNA sequence binding factor 1 was stained magenta with Alexa Fluor® 647. Images were taken using Leica stellaris 5. Protein abundance based on laser Intensity and smart gain: High. Scale bar: 20  $\mu$ m.



Western blotting analysis using anti-G-rich RNA sequence binding factor 1 antibody 1:5,000 and HRP-conjugated goat anti-rabbit secondary antibody 1:20,000 respectively. Image was developed using FeQ™ ECL Substrate Kit .



Western blotting analysis using anti-G-rich RNA sequence binding factor 1 antibody 1:5,000 and HRP-conjugated goat anti-rabbit secondary antibody 1:20,000 respectively. Image was developed using FeQ™ ECL Substrate Kit .