



SunLong Biotech Co.,LTD
Tel: 0086-571- 56623320 Fax:0086-571- 56623318
E-mail:sales@sunlongbiotech.com
www.sunlongbiotech.com

[KD-Validated] Anti-G Protein-Coupled Receptor Kinase 6 Rabbit Monoclonal Antibody

Cat No.: KD-10426

Aliases:

GRK6; G Protein-Coupled Receptor Kinase 6; GPRK6; EC 2.7.11.16; G Protein-Coupled Receptor Kinase GRK6; EC 2.7.11

Background:

UniProt Entry: [P43250](#);NCBI Gene Entry: [2870](#)

Application Information

Molecular Weight: Predicted, 66 kDa, observed, 70 kDa Clonality: Rabbit monoclonal antibody Clone ID: 24GB4870 Species Reactivity: Human, Mouse, Rat Applications Tested: Western Blotting (WB), Flow Cytometry (FCM)

Immunogen

A synthesized peptide derived from human GRK6

Isotype

Rabbit IgG

Storage Buffer

Supplied in PBS (pH 7.4) containing 50% glycerol, and 0.02% sodium azide.

Storage

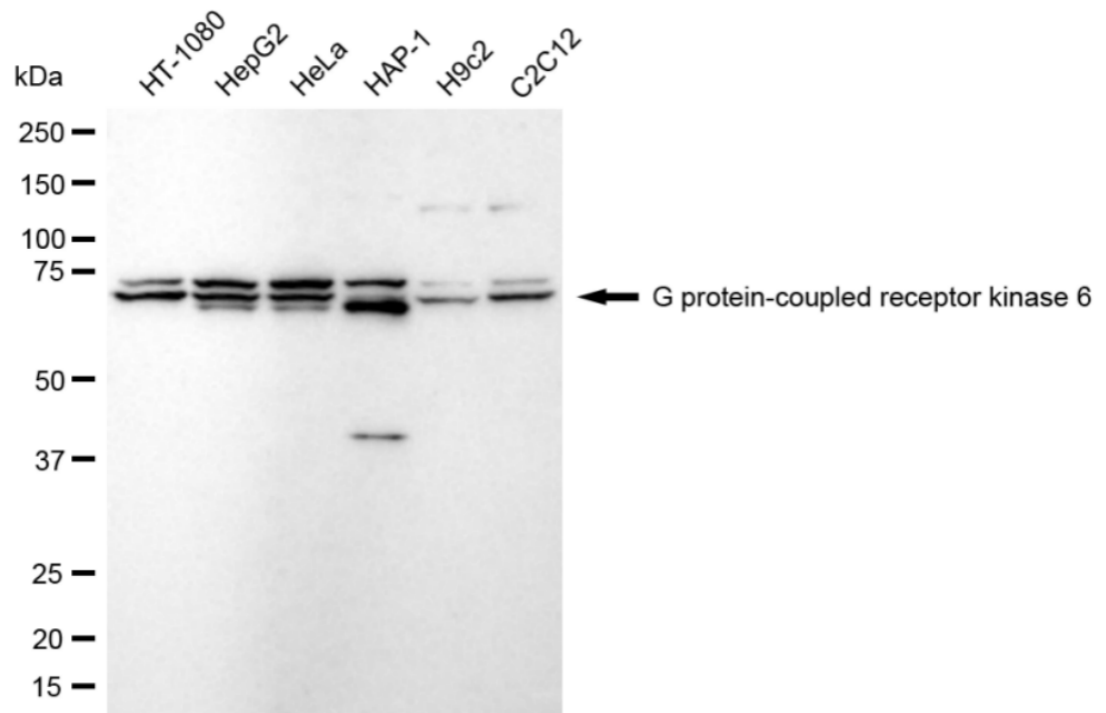
Store at -20 °C for one year.

Recommended Dilutions

Western Blotting (WB): 1:1,000-1:5,000 Flow Cytometry (FCM): 1:2,000

Protocols

For general and specific antibody protocols please visit our website. Read all instructions before using this product.



Western blotting analysis using anti-G protein-coupled receptor kinase 6 antibody 1:5,000 and HRP-conjugated goat anti-rabbit secondary antibody 1:20,000 respectively. Image was developed using NaQ™ ECL Substrate Kit 1:5,000 and HRP-conjugated goat anti-rabbit secondary antibody 1:20,000 respectively. Image was developed using NaQ™ ECL Substrate Kit 1:2,000. Green, isotype control; red, G protein-coupled receptor kinase 6.