



SunLong Biotech Co.,LTD  
Tel: 0086-571- 56623320 Fax:0086-571- 56623318  
E-mail:sales@sunlongbiotech.com  
www.sunlongbiotech.com

## **[KD-Validated] Anti-Growth factor receptor bound protein 7 Rabbit Monoclonal Antibody**

Cat No.: KD-10424

### **Aliases:**

GRB7; Growth Factor Receptor Bound Protein 7; Growth Factor Receptor-Bound Protein 7; Epidermal Growth Factor Receptor GRB-7; GRB7 Adapter Protein; B47

### **Background:**

UniProt Entry: [Q14451](#);NCBI Gene Entry: [2886](#)

### **Application Information**

Molecular Weight: Predicted, 60 kDa, observed, 60 kDa Clonality: Rabbit monoclonal antibody Clone ID: 24GB6000 Species Reactivity: Human Applications Used: Western Blotting (WB), Flow Cytometry (FCM), Immunocytochemistry (IC)

### **Immunogen**

A synthesized peptide derived from human GRB7

### **Isotype**

Rabbit IgG

### **Storage Buffer**

Supplied in PBS (pH 7.4) containing 50% glycerol, and 0.02% sodium azide.

### **Storage**

Store at -20 °C for one year.

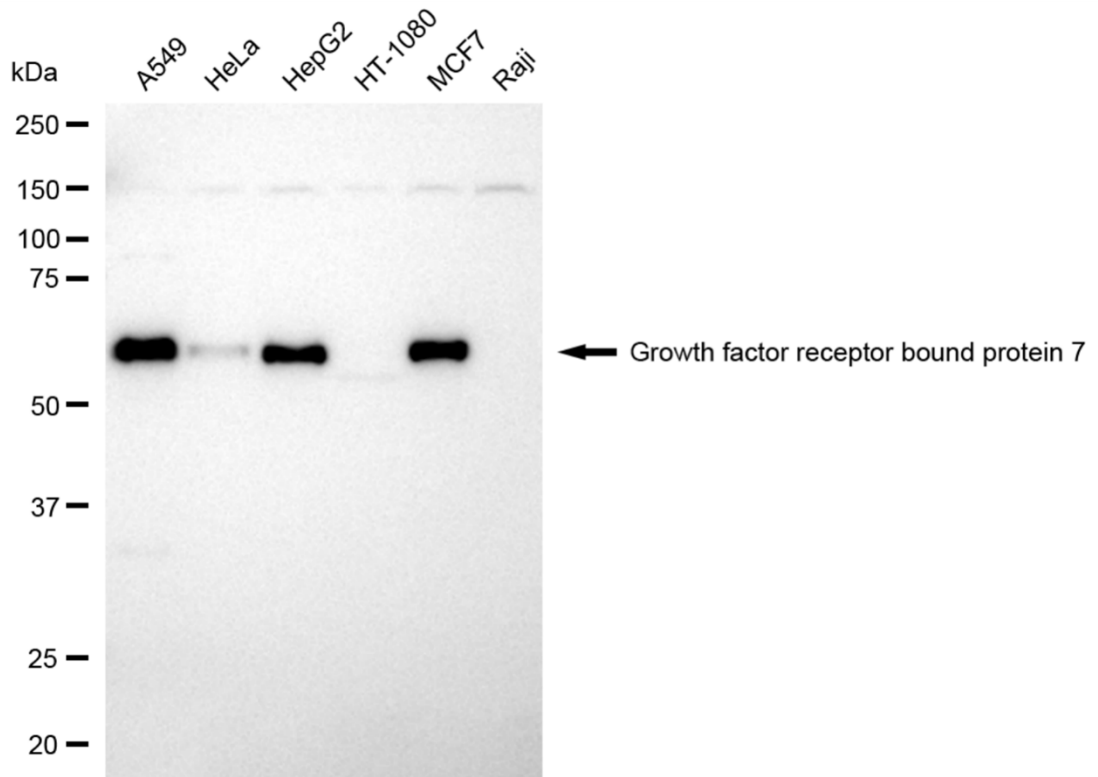
### Recommended Dilutions

Western Blotting (WB): 1:1,000-1:5,000 Flow Cytometry (FCM): 1:2,000

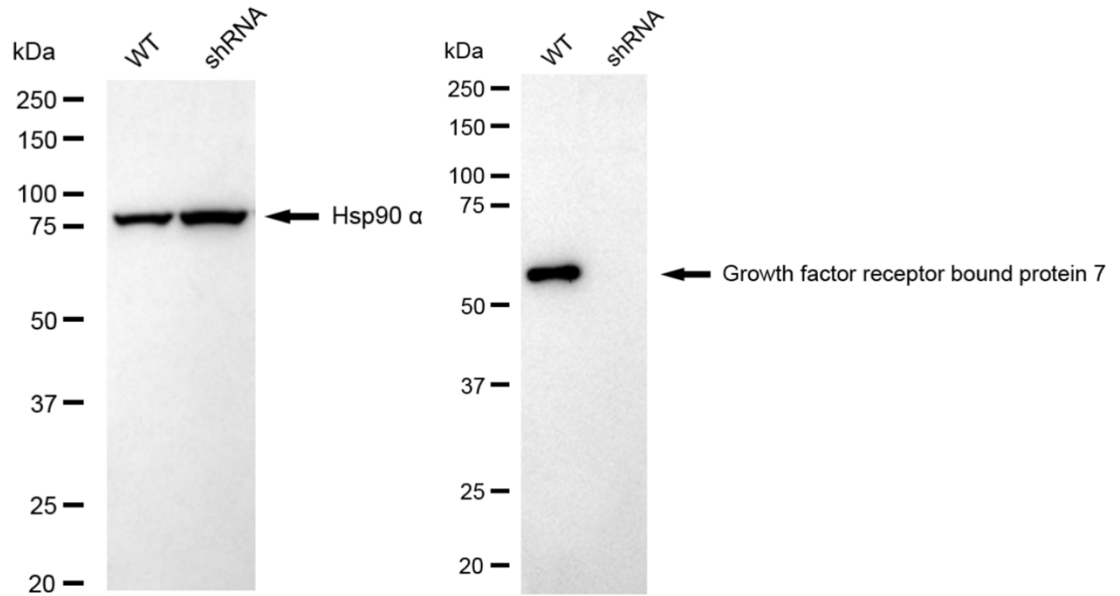
Immunocytochemistry (IC): 1:1,000

### Protocols

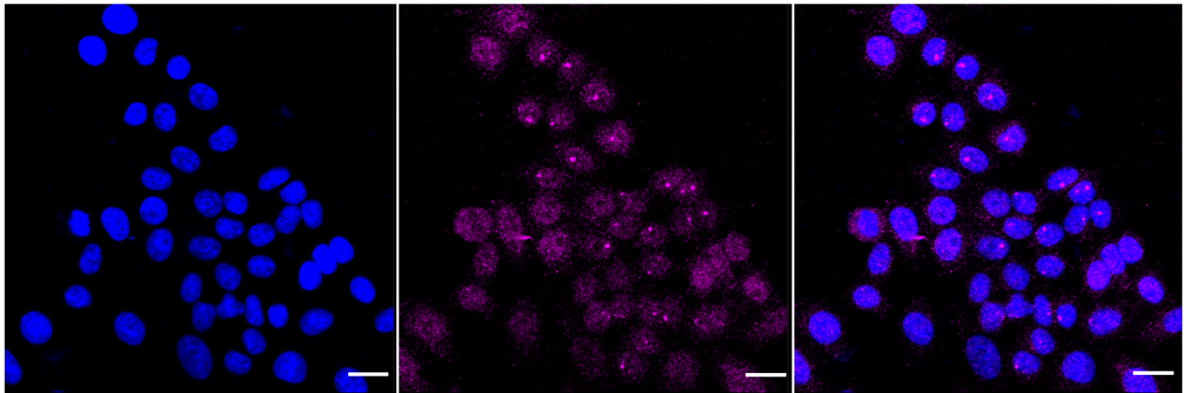
For general and specific antibody protocols please visit our website. Read all instructions before using this product.



Western blotting analysis using anti-karyopherin subunit alpha 2 antibody 1:5,000 and HRP-conjugated goat anti-rabbit secondary antibody 1:20,000 respectively. Image was developed using FeQTM ECL Substrate Kit .



Western blotting analysis using anti-growth factor receptor bound protein 7 antibody 1:5,000 and HRP-conjugated goat anti-rabbit secondary antibody 1:20,000 respectively. Image was developed using NaQ™ ECL Substrate Kit 1:2,000. Green, isotype control; red, growth factor receptor bound protein 7.



Immunocytochemical staining of HepG2 cells with anti-growth factor receptor bound protein 7 antibody 1:1,000. Nuclei were stained blue with DAPI; Growth factor receptor bound protein 7 was stained magenta with Alexa Fluor® 647. Images were taken using Leica stellaris 5. Protein abundance based on laser Intensity and smart gain: Medium. Scale bar: 20  $\mu$ m.