



SunLong Biotech Co.,LTD
Tel: 0086-571- 56623320 Fax:0086-571- 56623318
E-mail:sales@sunlongbiotech.com
www.sunlongbiotech.com

[KD-Validated] Anti-Growth factor receptor bound protein 2 Rabbit Monoclonal Antibody

Cat No.: KD-10423

Aliases:

GRB2; Growth Factor Receptor Bound Protein 2; Growth Factor Receptor-Bound Protein 2; NCKAP2; SH2/SH3 Adapter GRB2; Protein Ash; ASH; Epidermal Growth Factor Receptor-Binding Protein GRB2; Epididymis Secretory Sperm Binding Protein; Growth Factor Receptor-Bound Protein 3; Antibodyundant SRC Homology; Adapter Protein GRB2; EGFRBP-GRB2; MSTP084; Grb3-3; MST084; HT027

Background:

UniProt Entry: [P62993](#);NCBI Gene Entry: [2885](#)

Application Information

Molecular Weight: Predicted, 25 kDa, observed, 25 kDa Clonality: Rabbit monoclonal antibody Clone ID: 23GB6275 Species Reactivity: Human, Mouse, Rat Applications Tested: Western Blotting (WB), Flow Cytometry (FCM)

Immunogen

A synthesized peptide derived from human GRB2

Isotype

Rabbit IgG

Storage Buffer

Supplied in PBS (pH 7.4) containing 50% glycerol, and 0.02% sodium azide.

Storage

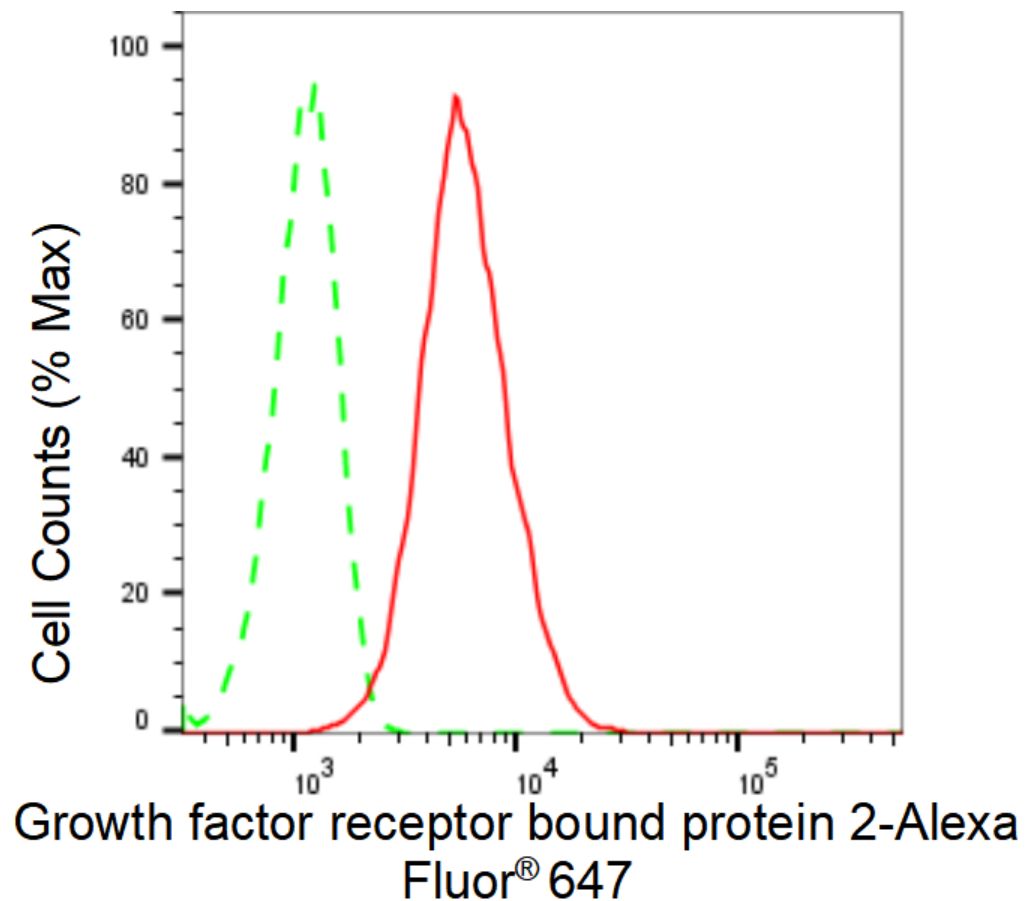
Store at -20 °C for one year.

Recommended Dilutions

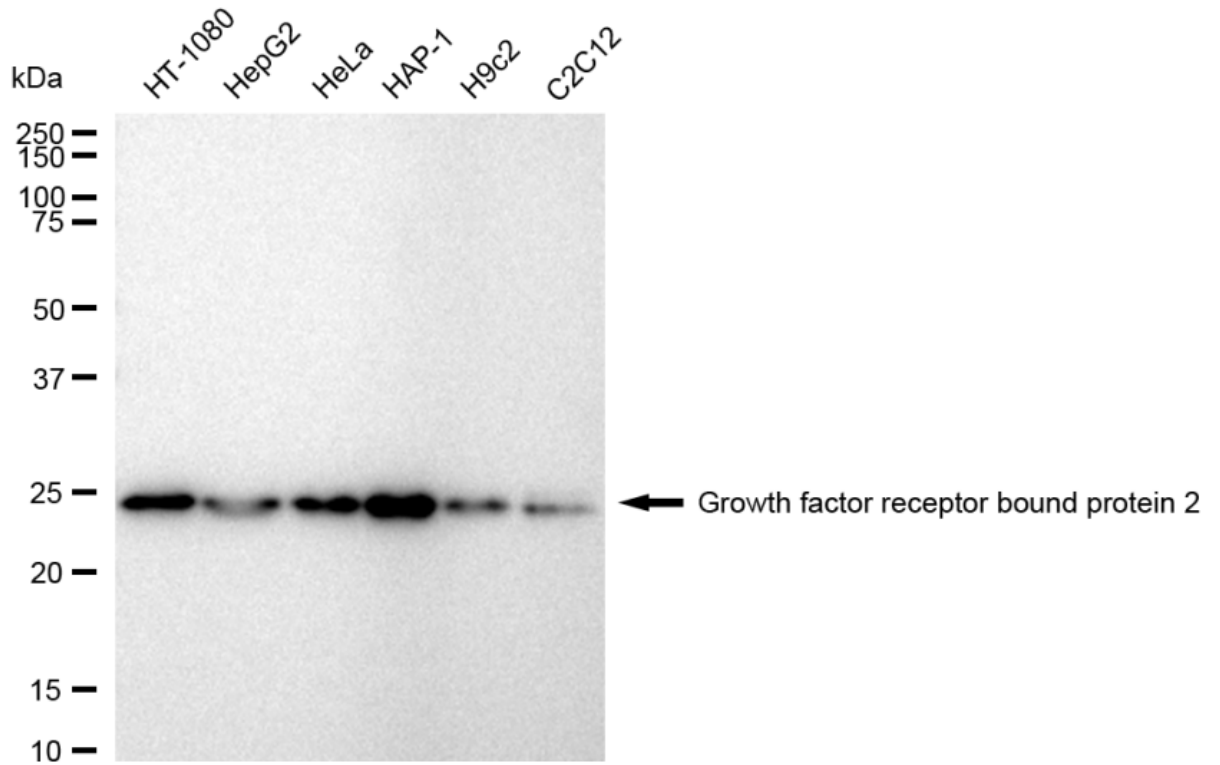
Western Blotting (WB): 1:1,000-1:5,000 Flow Cytometry (FCM): 1:2,000

Protocols

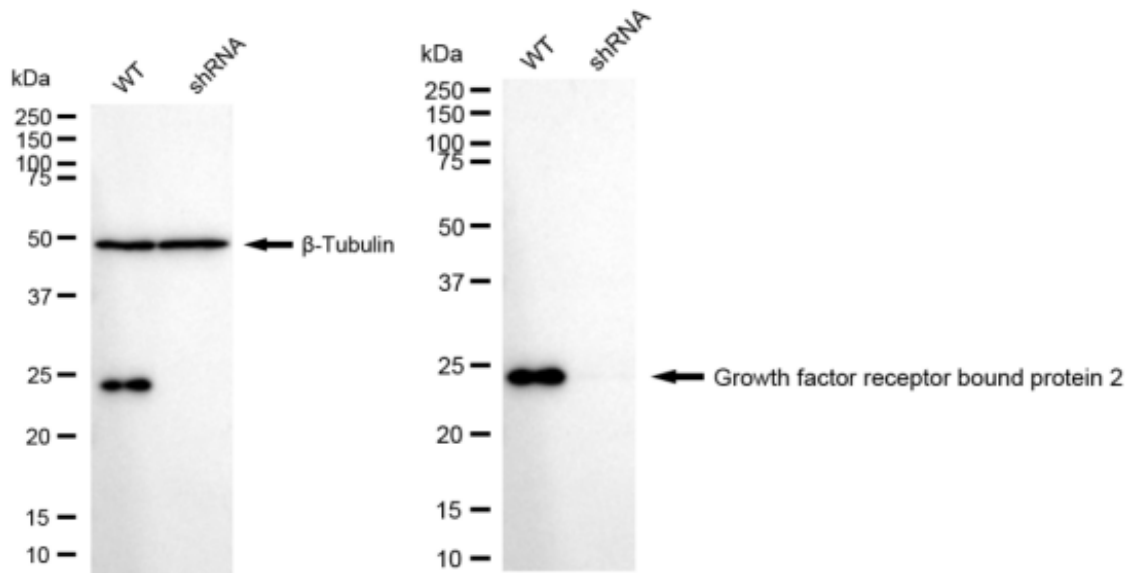
For general and specific antibody protocols please visit our website. Read all instructions before using this product.



Flow cytometric analysis of Growth factor receptor bound protein 2 expression in HT-1080 cells using Growth factor receptor bound protein 2 antibody 1:2,000. Green, isotype control; red, Growth factor receptor bound protein 2.



Western blotting analysis using anti-Growth factor receptor bound protein 2 antibody 1:5,000 and HRP-conjugated goat anti-rabbit secondary antibody 1:20,000 respectively. Image was developed using FeQ™ ECL Substrate Kit .



Western blotting analysis using anti-Growth factor receptor bound protein 2 antibody 1:5,000 and HRP-conjugated goat anti-rabbit secondary antibody 1:20,000 respectively. Image was developed using FeQ™ ECL Substrate Kit .