



SunLong Biotech Co.,LTD
Tel: 0086-571- 56623320 Fax:0086-571- 56623318
E-mail:sales@sunlongbiotech.com
www.sunlongbiotech.com

[KD-Validated] Anti-GPX1 Rabbit Monoclonal Antibody

Cat No.: KD-10421

Aliases:

GPX1; Glutathione Peroxidase 1; Cellular Glutathione Peroxidase; Selenoprotein GPX1; EC 1.11.1.9; GSHPx-1; EC 1.11.1; GSHPX1; GPx-1; GPXD

Background:

UniProt Entry: [P07203](#);NCBI Gene Entry: [2876](#)

Application Information

Molecular Weight: Predicted, 22 kDa, observed, 22 kDa Clonality: Rabbit monoclonal antibody Clone ID: 23GB5600 Species Reactivity: Human Applications Used: Western Blotting (WB), Flow Cytometry (FCM), Immunocytochemistry (IC)

Immunogen

A synthesized peptide derived from human GPX1

Isotype

Rabbit IgG

Storage Buffer

Supplied in PBS (pH 7.4) containing 50% glycerol, and 0.02% sodium azide.

Storage

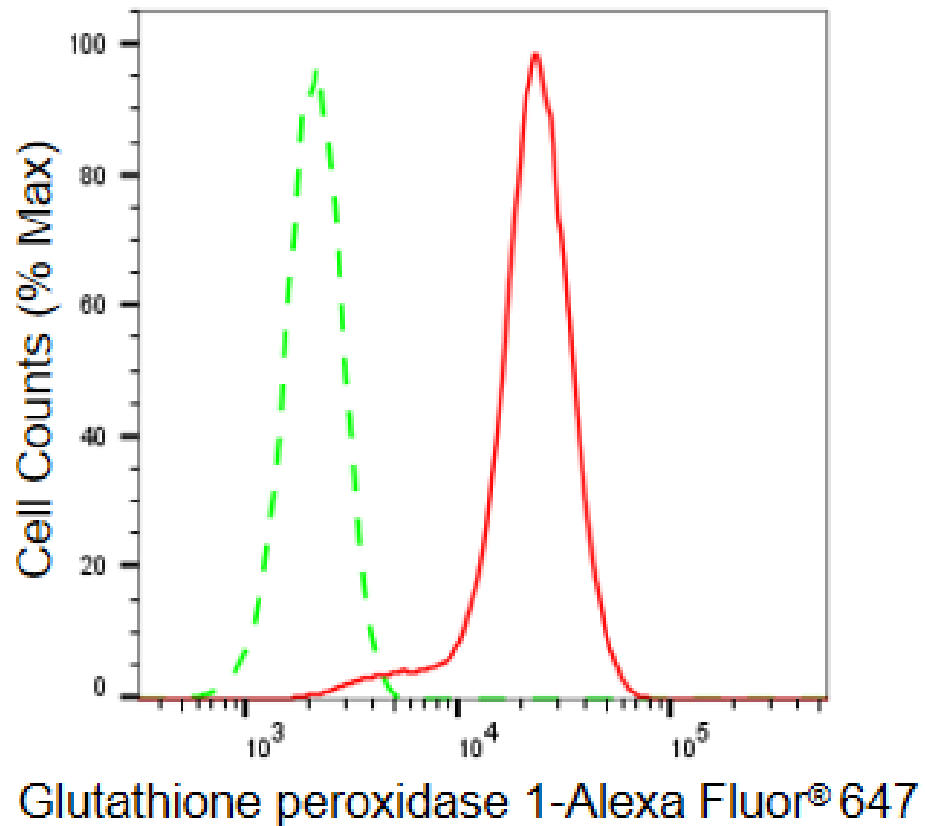
Store at -20 °C for one year.

Recommended Dilutions

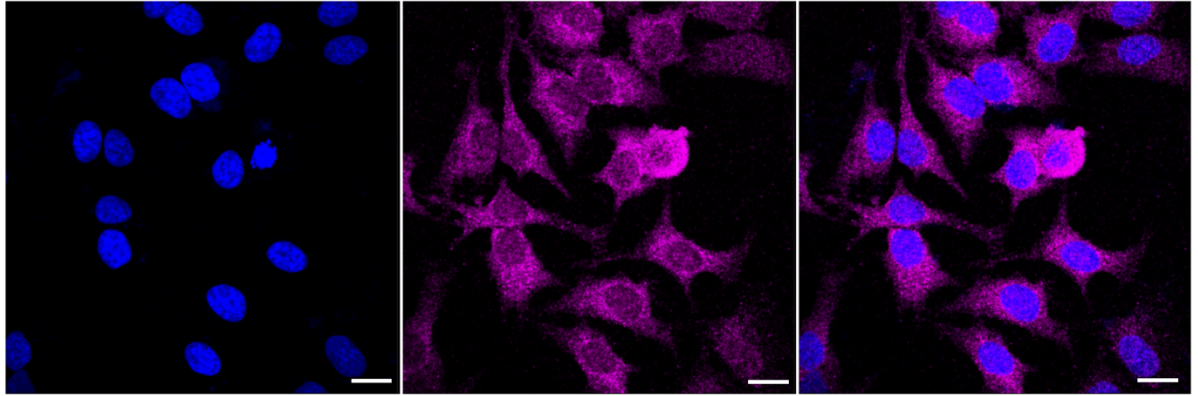
Western Blotting (WB): 1:1,000-1:5,000 Flow Cytometry (FCM): 1:2,000
Immunocytochemistry (IC): 1:1,000

Protocols

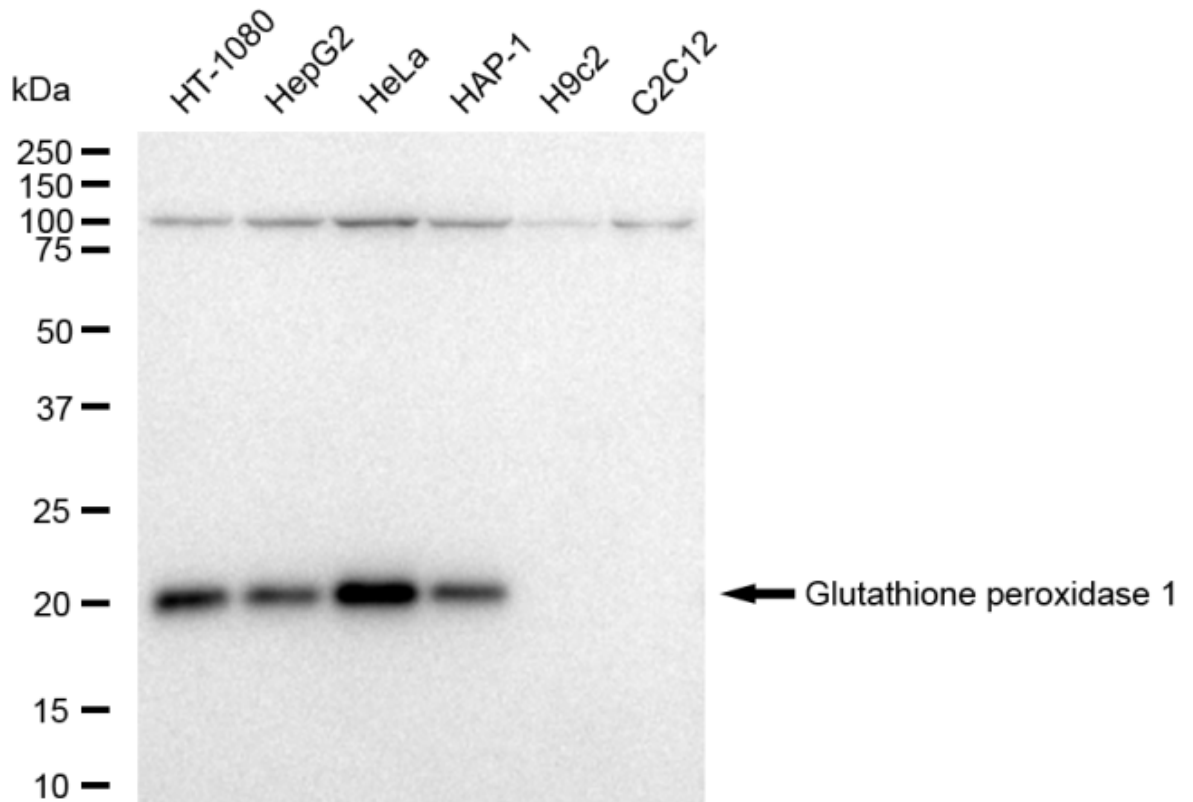
For general and specific antibody protocols please visit our website. Read all instructions before using this product.



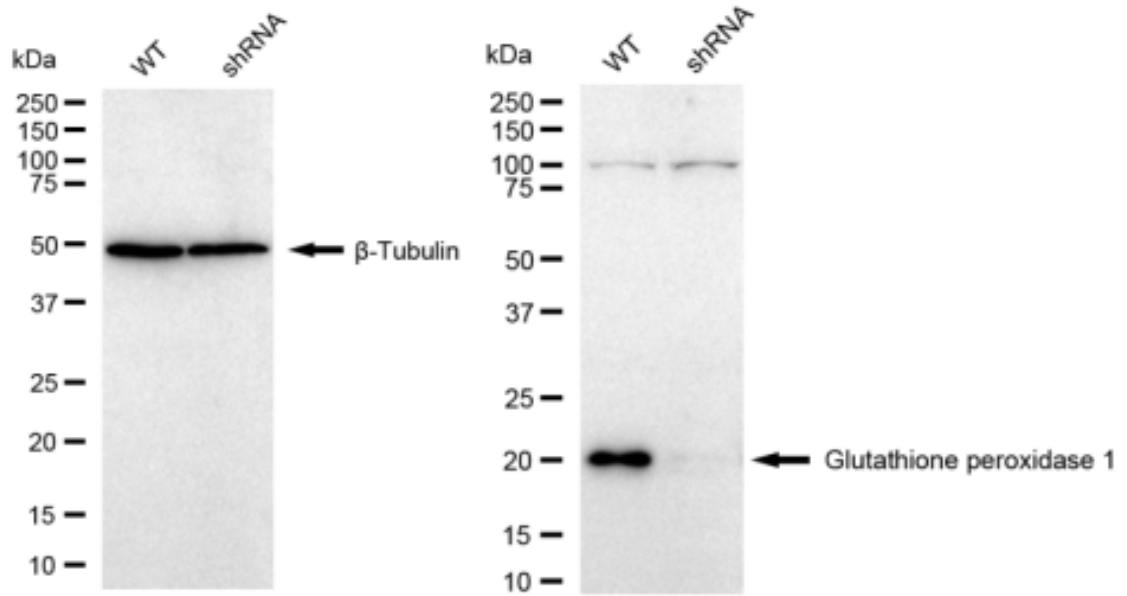
Flow cytometric analysis of Glutathione peroxidase 1 expression in HeLa cells using Glutathione peroxidase 1 antibody 1:2,000. Green, isotype control; red, Glutathione peroxidase 1.



Immunocytochemical staining of HeLa cells with anti-Glutathione peroxidase 1 antibody 1:1,000. Nuclei were stained blue with DAPI; Glutathione peroxidase 1 was stained magenta with Alexa Fluor® 647. Images were taken using Leica stellaris 5. Protein abundance based on laser Intensity and smart gain: Low. Scale bar: 20 μ m.



Western blotting analysis using anti-Glutathione peroxidase 1 antibody 1:5,000 and HRP-conjugated goat anti-rabbit secondary antibody 1:20,000 respectively. Image was developed using FeQ™ ECL Substrate Kit .



Western blotting analysis using anti-Glutathione peroxidase 1 antibody 1:5,000 and HRP-conjugated goat anti-rabbit secondary antibody 1:20,000 respectively. Image was developed using FeQ™ ECL Substrate Kit .