



SunLong Biotech Co.,LTD  
Tel: 0086-571- 56623320 Fax:0086-571- 56623318  
E-mail:sales@sunlongbiotech.com  
www.sunlongbiotech.com

## **[KD-Validated] Anti-Glucose 6 phosphate isomerase Rabbit Monoclonal Antibody**

Cat No.: KD-10420

### **Aliases:**

GPI; Glucose-6-Phosphate Isomerase; AMF; NLK; Autocrine Motility Factor;  
Phosphoglucose Isomerase; Phosphohexose Isomerase; Neuroleukin; EC 5.3.1.9; SA-36;  
PGI; PHI; Hexose Monophosphate Isomerase; Glucose Phosphate Isomerase;  
Hexosephosphate Isomerase; Phosphosaccharomutase; Phosphohexomutase; Sperm  
Antigen-36; Sperm Antigen 36; Oxoisomerase; GNPI; SA36

### **Background:**

UniProt Entry: [P06744](#);NCBI Gene Entry: [2821](#)

### **Application Information**

Molecular Weight: Predicted, 63 kDa, observed, 63 kDa Clonality: Rabbit monoclonal  
antibody Clone ID: 23GB5595 Species Reactivity: Human Applications Used: Western  
Blotting (WB), Flow Cytometry (FCM)

### **Immunogen**

A synthesized peptide derived from human Glucose 6 phosphate isomerase

### **Isotype**

Rabbit IgG

### **Storage Buffer**

Supplied in PBS (pH 7.4) containing 50% glycerol, and 0.02% sodium azide.

#### Storage

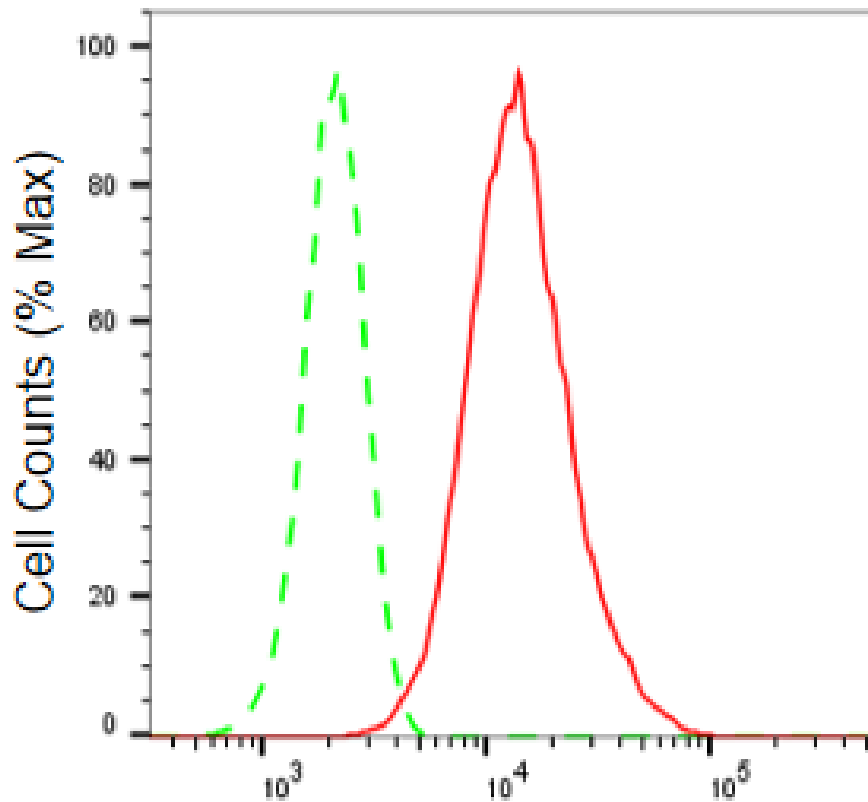
Store at -20 °C for one year.

#### Recommended Dilutions

Western Blotting (WB): 1:1,000-1:5,000 Flow Cytometry (FCM): 1:2,000

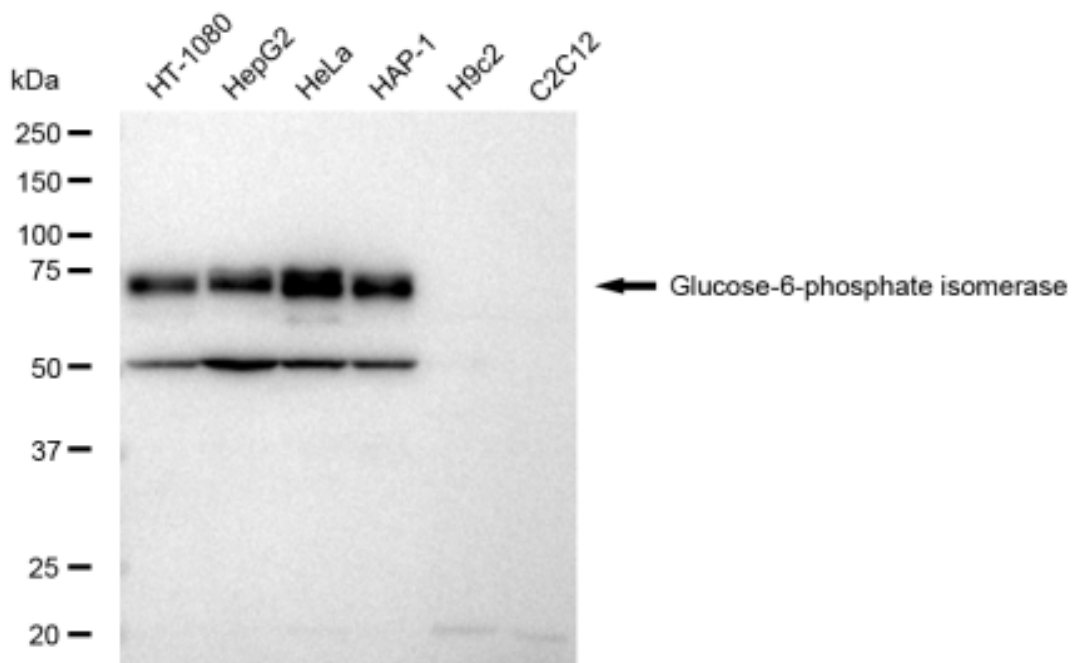
#### Protocols

For general and specific antibody protocols please visit our website. Read all instructions before using this product.

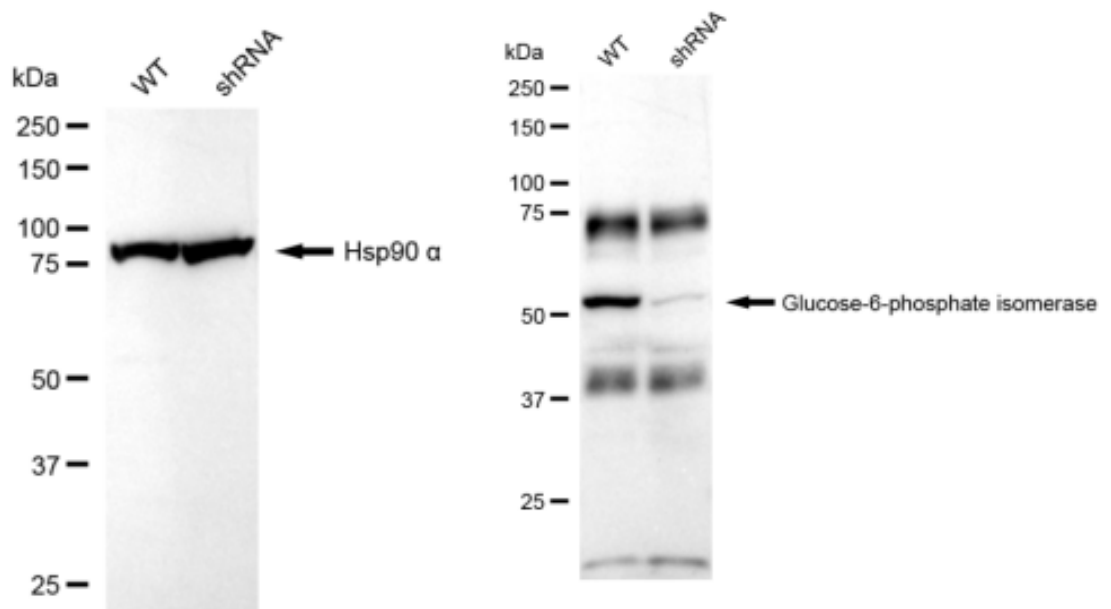


### Glucose-6-phosphate isomerase-Alexa Fluor® 647

Flow cytometric analysis of Glucose-6-phosphate isomerase expression in HeLa cells using Glucose-6-phosphate isomerase antibody 1:2,000. Green, isotype control; red, Glucose-6-phosphate isomerase.



Western blotting analysis using anti-Glucose-6-phosphate isomerase antibody 1:5,000 and HRP-conjugated goat anti-rabbit secondary antibody 1:20,000 respectively. Image was developed using FeQ™ ECL Substrate Kit .



Western blotting analysis using anti-Glucose 6 phosphate isomerase antibody 1:5,000 and HRP-conjugated goat anti-rabbit secondary antibody 1:20,000 respectively. Image was developed using FeQ™ ECL Substrate Kit .