



SunLong Biotech Co.,LTD
Tel: 0086-571- 56623320 Fax:0086-571- 56623318
E-mail:sales@sunlongbiotech.com
www.sunlongbiotech.com

[KD-Validated] Anti-Glutamic-oxaloacetic transaminase 2 Rabbit Monoclonal Antibody

Cat No.: KD-10417

Aliases:

GOT2; Glutamic-Oxaloacetic Transaminase 2; KYAT4; Kynurenine Aminotransferase IV; MAspAT; KATIV; KAT4; Plasma Membrane-Associated Fatty Acid-Binding Protein; Glutamic-Oxaloacetic Transaminase 2, Mitochondrial; Aspartate Aminotransferase, Mitochondrial; Kynurenine--Oxoglutarate Transaminase IV; Kynurenine--Oxoglutarate Transaminase 4; Glutamate Oxaloacetate Transaminase 2; Kynurenine Aminotransferase 4; Aspartate Aminotransferase 2; Fatty Acid-Binding Protein; Aspartate Transaminase 2; Transaminase A; EC 2.6.1.1; MitAAT; FABP-1; FABPpm; Glutamic-Oxaloacetic Transaminase 2, Mitochondrial (Aspartate Aminotransferase 2); EC 2.6.1.7; EC 2.6.1; MITAAT; DEE82

Background:

UniProt Entry: [P00505](#);NCBI Gene Entry: [2806](#)

Application Information

Molecular Weight: Predicted, 48 kDa, observed, 43 kDa Clonality: Rabbit monoclonal antibody Clone ID: 23GB7985 Species Reactivity: Human, Mouse, Rat Applications Tested: Western Blotting (WB), Flow Cytometry (FCM)

Immunogen

A synthesized peptide derived from human GOT2

Isotype

Rabbit IgG

Storage Buffer

Supplied in PBS (pH 7.4) containing 50% glycerol, and 0.02% sodium azide.

Storage

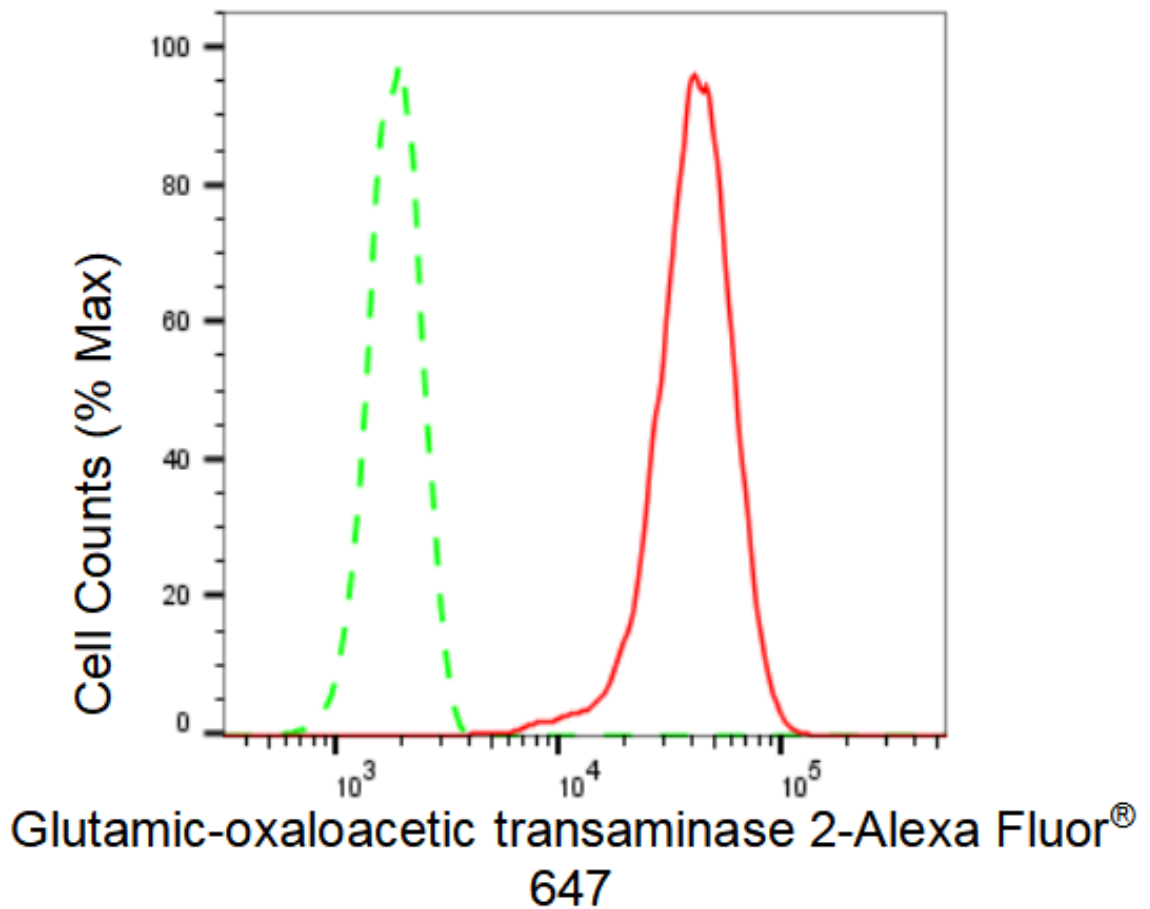
Store at -20 °C for one year.

Recommended Dilutions

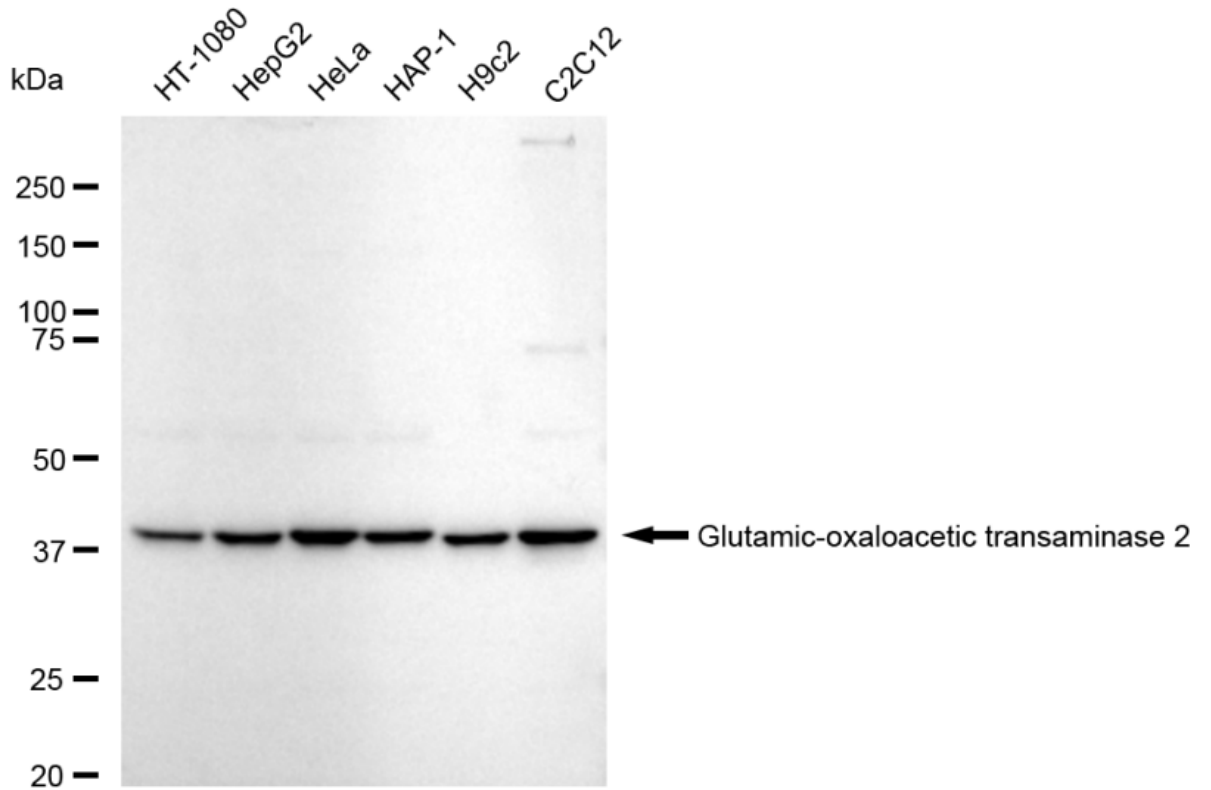
Western Blotting (WB): 1:1,000-1:5,000 Flow Cytometry (FCM): 1:2,000

Protocols

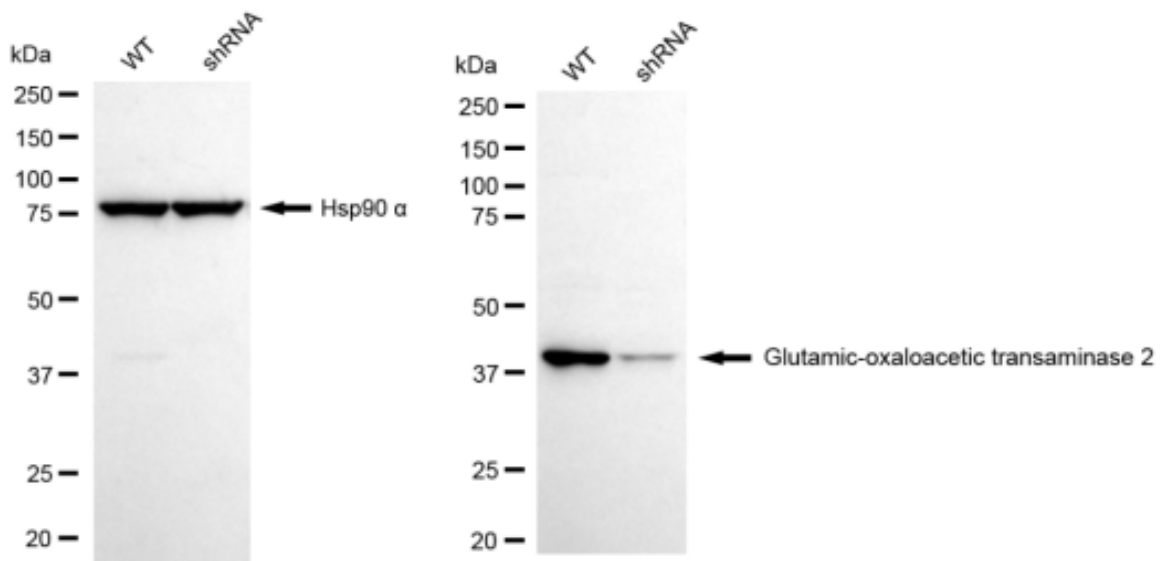
For general and specific antibody protocols please visit our website. Read all instructions before using this product.



Flow cytometric analysis of Glutamic-oxaloacetic transaminase 2 expression in HepG2 cells using Glutamic-oxaloacetic transaminase 2 antibody 1:2,000. Green, isotype control; red, Glutamic-oxaloacetic transaminase 2.



Western blotting analysis using anti-Glutamic-oxaloacetic transaminase 2 antibody 1:5,000 and HRP-conjugated goat anti-rabbit secondary antibody 1:20,000 respectively. Image was developed using FeQ™ ECL Substrate Kit .



Western blotting analysis using anti-Glutamic-oxaloacetic transaminase 2 antibody 1:5,000 and HRP-conjugated goat anti-rabbit secondary antibody 1:20,000 respectively. Image was developed using FeQ™ ECL Substrate Kit .