



SunLong Biotech Co.,LTD
Tel: 0086-571- 56623320 Fax:0086-571- 56623318
E-mail:sales@sunlongbiotech.com
www.sunlongbiotech.com

[KD-Validated] Anti-Glutamic-oxaloacetic transaminase 1 Rabbit Monoclonal Antibody

Cat No.: KD-10416

Aliases:

GOT1; Glutamic-Oxaloacetic Transaminase 1; Glutamate Oxaloacetate Transaminase 1; AST1; SGOT; AST; Glutamic-Oxaloacetic Transaminase 1, Soluble; Aspartate Aminotransferase, Cytoplasmic; Cysteine Aminotransferase, Cytoplasmic; Cysteine Transaminase, Cytoplasmic; Aspartate Aminotransferase 1; Aspartate Transaminase 1; Transaminase A; EC 2.6.1.1; CAspAT; CCAT; Glutamic-Oxaloacetic Transaminase 1, Soluble (Aspartate Aminotransferase 1); Testis Secretory Sperm-Binding Protein Li 196a; Growth-Inhibiting Protein 18; EC 2.6.1.3; ASTQTL1; GIG18

Background:

UniProt Entry: [P17174](#);NCBI Gene Entry: [2805](#)

Application Information

Molecular Weight: Predicted, 46 kDa, observed, 47 kDa Clonality: Rabbit monoclonal antibody Clone ID: 23GB5585 Species Reactivity: Human, Mouse, Rat Applications Tested: Western Blotting (WB), Flow Cytometry (FCM)

Immunogen

A synthesized peptide derived from human Aspartate Aminotransferase

Isotype

Rabbit IgG

Storage Buffer

Supplied in PBS (pH 7.4) containing 50% glycerol, and 0.02% sodium azide.

Storage

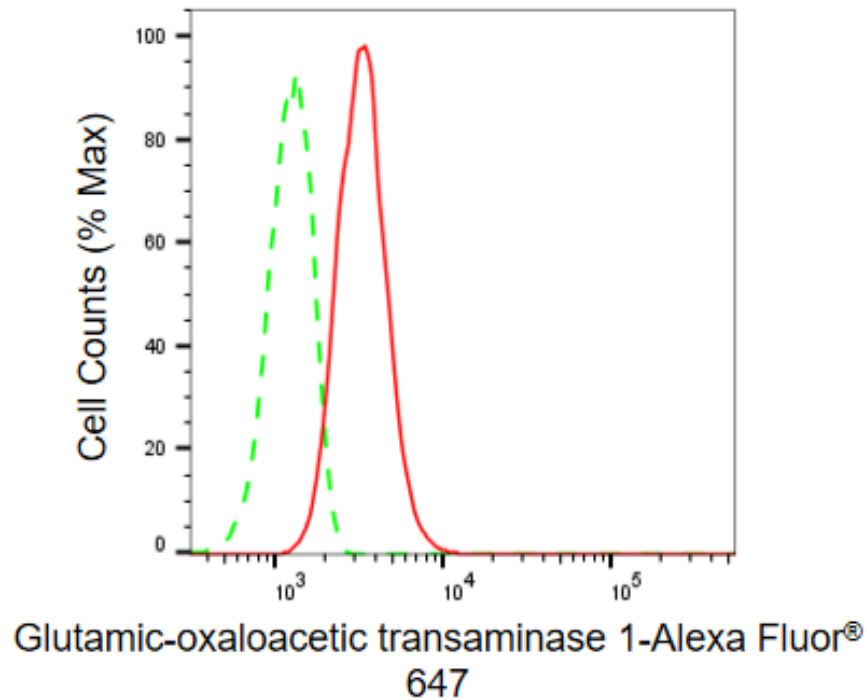
Store at -20 °C for one year.

Recommended Dilutions

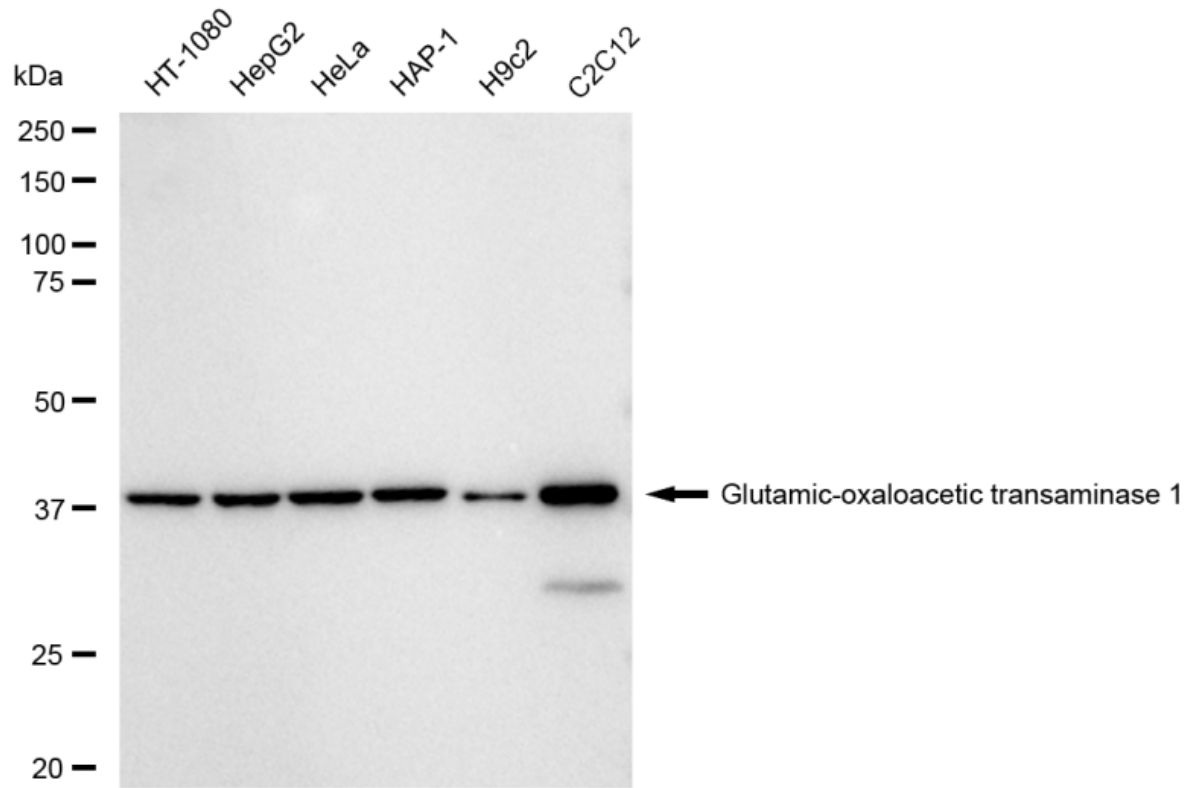
Western Blotting (WB): 1:1,000-1:5,000 Flow Cytometry (FCM): 1:2,000

Protocols

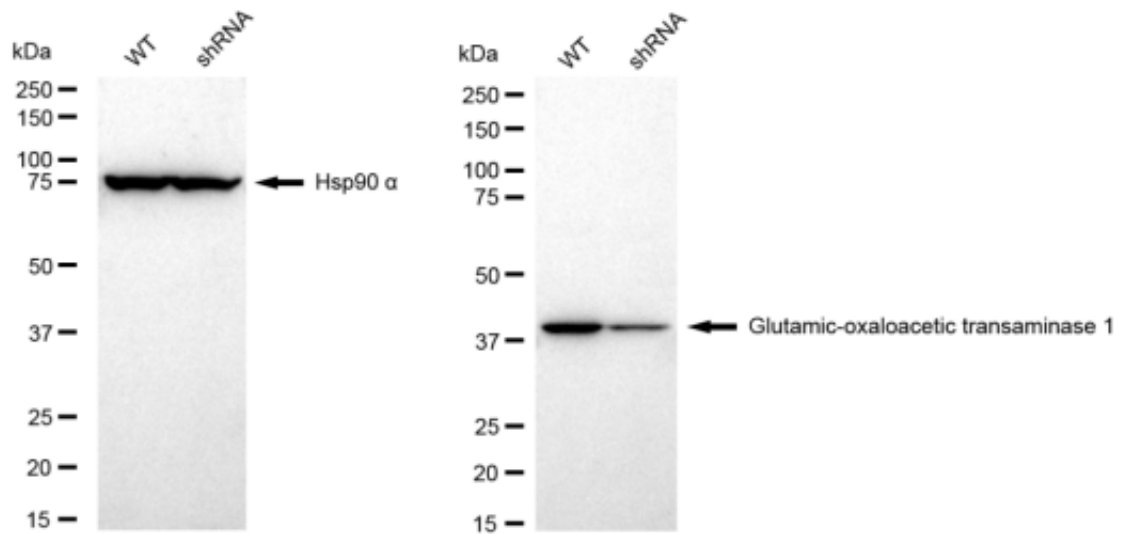
For general and specific antibody protocols please visit our website. Read all instructions before using this product.



Flow cytometric analysis of Glutamic-oxaloacetic transaminase 1 expression in C2C12 cells using Glutamic-oxaloacetic transaminase 1 antibody 1:2,000. Green, isotype control; red, Glutamic-oxaloacetic transaminase 1.



Western blotting analysis using anti-Glutamic-oxaloacetic transaminase 1 antibody 1:5,000 and HRP-conjugated goat anti-rabbit secondary antibody 1:20,000 respectively. Image was developed using FeQ™ ECL Substrate Kit .



Western blotting analysis using anti-Glutamic-oxaloacetic transaminase 1 antibody 1:5,000 and HRP-conjugated goat anti-rabbit secondary antibody 1:20,000 respectively. Image was developed using FeQ™ ECL Substrate Kit .