



SunLong Biotech Co.,LTD
Tel: 0086-571- 56623320 Fax:0086-571- 56623318
E-mail:sales@sunlongbiotech.com
www.sunlongbiotech.com

[KD-Validated] Anti-Golgi reassembly stacking protein 1 Rabbit Monoclonal Antibody

Cat No.: KD-10415

Aliases:

GORASP1; Golgi Reassembly Stacking Protein 1; GRASP65; Golgi Phosphoprotein 5; GOLPH5; P65; Golgi Reassembly-Stacking Protein Of 65 KDa; Golgi Reassembly Stacking Protein 1, 65kDa; Golgi Peripheral Membrane Protein P65; Golgi Reassembly-Stacking Protein 1; FLJ23443; Golgi Reassembly And Stacking Protein 1

Background:

UniProt Entry: [Q9BQQ3](#);NCBI Gene Entry: [64689](#)

Application Information

Molecular Weight: Predicted, 46 kDa, observed, 65 kDa Clonality: Rabbit monoclonal antibody Clone ID: 23GB5580 Species Reactivity: Human Applications Used: Western Blotting (WB), Flow Cytometry (FCM)

Immunogen

A synthesized peptide derived from human GRASP65

Isotype

Rabbit IgG

Storage Buffer

Supplied in PBS (pH 7.4) containing 50% glycerol, and 0.02% sodium azide.

Storage

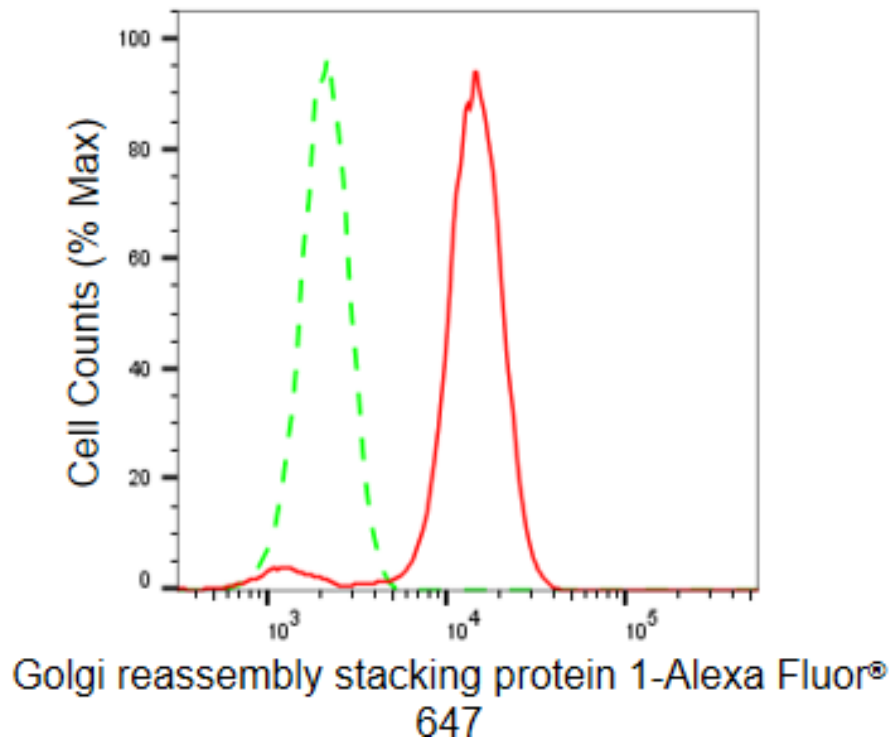
Store at -20 °C for one year.

Recommended Dilutions

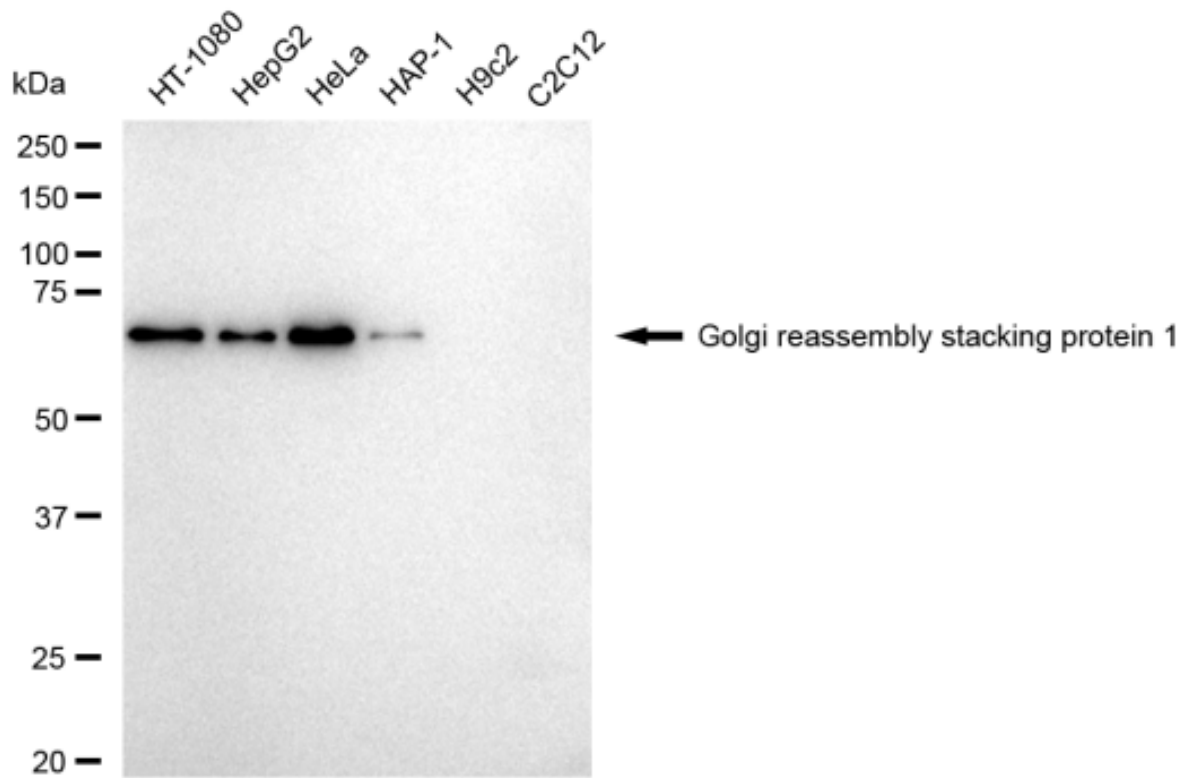
Western Blotting (WB): 1:1,000-1:5,000 Flow Cytometry (FCM): 1:2,000

Protocols

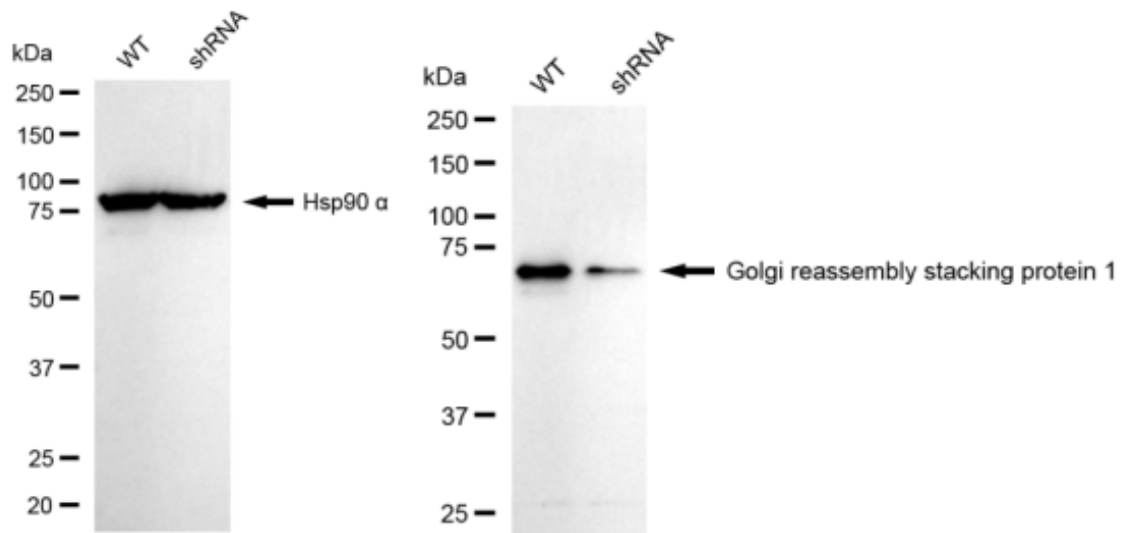
For general and specific antibody protocols please visit our website. Read all instructions before using this product.



Flow cytometric analysis of Golgi reassembly stacking protein 1 expression in HeLa cells using Golgi reassembly stacking protein 1 antibody 1:2,000. Green, isotype control; red, Golgi reassembly stacking protein 1.



Western blotting analysis using anti-Golgi reassembly stacking protein 1 antibody 1:5,000 and HRP-conjugated goat anti-rabbit secondary antibody 1:20,000 respectively. Image was developed using FeQ™ ECL Substrate Kit .



Western blotting analysis using anti-Golgi reassembly stacking protein 1 antibody 1:5,000 and HRP-conjugated goat anti-rabbit secondary antibody 1:20,000 respectively. Image was developed using FeQ™ ECL Substrate Kit .