



SunLong Biotech Co.,LTD  
Tel: 0086-571- 56623320 Fax:0086-571- 56623318  
E-mail:sales@sunlongbiotech.com  
www.sunlongbiotech.com

## **[KD-Validated] Anti-GOPC Rabbit Monoclonal Antibody**

Cat No.: KD-10414

### **Aliases:**

GOPC; Golgi Associated PDZ And Coiled-Coil Motif Containing; PIST; FIG; CAL; DJ94G16.2; GOPC1; Golgi-Associated PDZ And Coiled-Coil Motif-Containing Protein; PDZ Protein Interacting Specifically With TC10; CFTR-Associated Ligand; Fused In Glioblastoma; PDZ/Coiled-Coil Domain Binding Partner For The Rho-Family GTPase TC10; Golgi-Associated PDZ And Coiled-Coil Motif Containing Protein; DJ94G16.2 PIST

### **Background:**

UniProt Entry: [Q9HD26](#);NCBI Gene Entry: [57120](#)

### **Application Information**

Molecular Weight: Predicted, 51 kDa, observed, 51 kDa Clonality: Rabbit monoclonal antibody Clone ID: 23GB5870 Species Reactivity: Human, Mouse, Rat Applications Tested: Western Blotting (WB), Flow Cytometry (FCM)

### **Immunogen**

A synthesized peptide derived from human PIST

### **Isotype**

Rabbit IgG

### **Storage Buffer**

Supplied in PBS (pH 7.4) containing 50% glycerol, and 0.02% sodium azide.

**Storage**

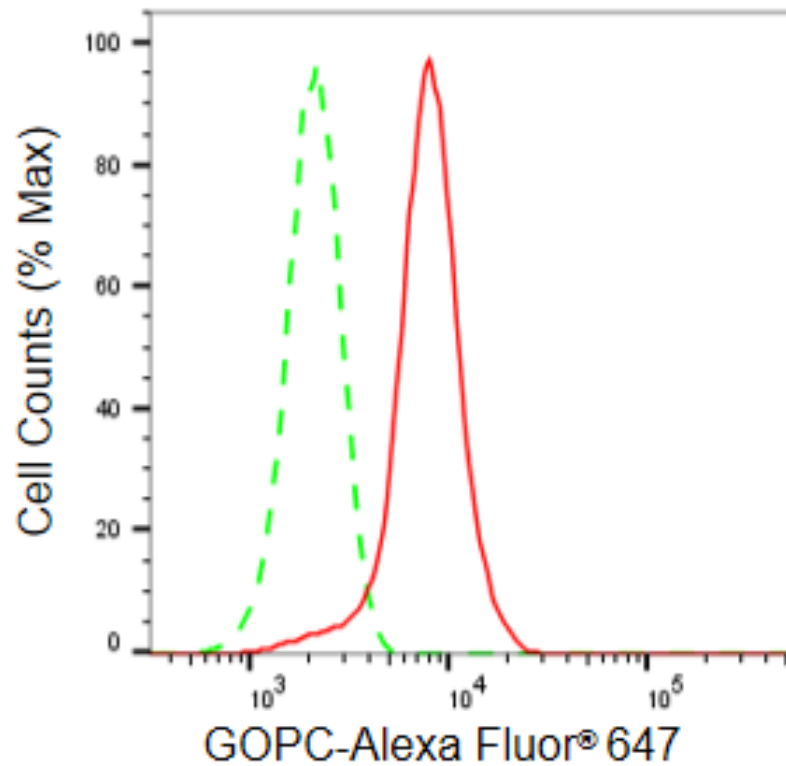
Store at -20 °C for one year.

**Recommended Dilutions**

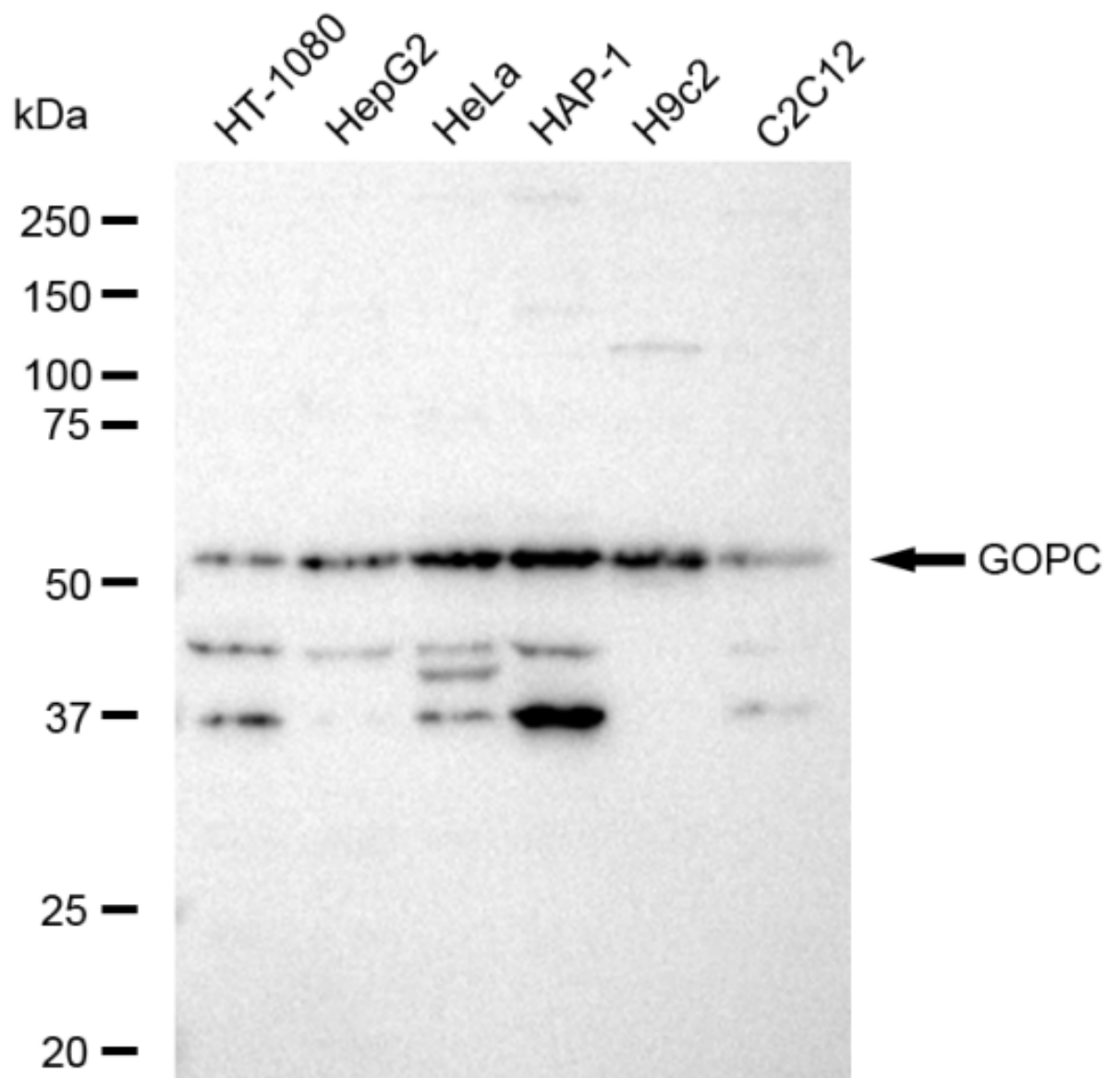
Western Blotting (WB): 1:1,000-1:5,000 Flow Cytometry (FCM): 1:2,000

**Protocols**

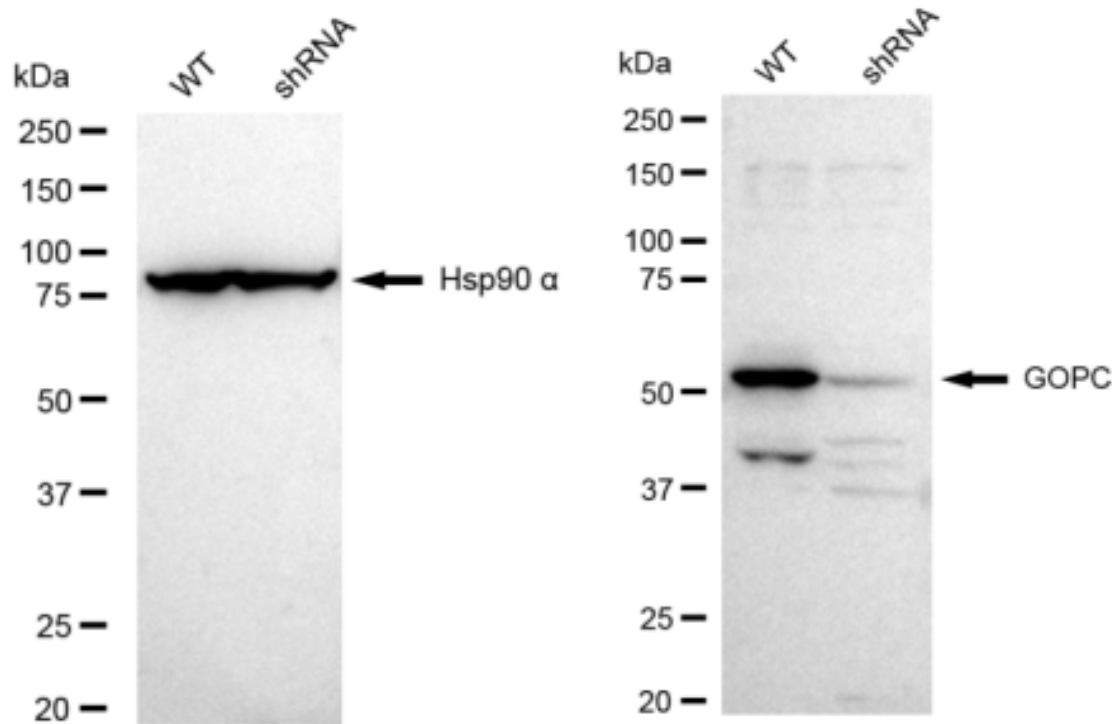
For general and specific antibody protocols please visit our website. Read all instructions before using this product.



Flow cytometric analysis of GPC expression in HeLa cells using GPC antibody 1:2,000. Green, isotype control; red, GPC.



Western blotting analysis using anti-GOPC antibody 1:5,000 and HRP-conjugated goat anti-rabbit secondary antibody 1:20,000 respectively. Image was developed using FeQ™ ECL Substrate Kit .



Western blotting analysis using anti-GOPC antibody 1:5,000 and HRP-conjugated goat anti-rabbit secondary antibody 1:20,000 respectively. Image was developed using FeQ™ ECL Substrate Kit .