



SunLong Biotech Co.,LTD  
Tel: 0086-571- 56623320 Fax:0086-571- 56623318  
E-mail:sales@sunlongbiotech.com  
www.sunlongbiotech.com

## **[KD-Validated] Anti-Golgi integral membrane protein 4 Rabbit Monoclonal Antibody**

Cat No.: KD-10413

### **Aliases:**

GOLIM4; Golgi Integral Membrane Protein 4; GPP130; GIMPC; Golgi Phosphoprotein 4; GOLPH4; P138; Golgi-Localized Phosphoprotein Of 130 KDa; Golgi Integral Membrane Protein, Cis; Golgi Phosphoprotein Of 130 KDa; Cis Golgi-Localized Calcium-Binding Protein; 130 KDa Golgi-Localized Phosphoprotein; Type II Golgi Membrane Protein; GIMPC

### **Background:**

UniProt Entry: [O00461](#);NCBI Gene Entry: [27333](#)

### **Application Information**

Molecular Weight: Predicted, 82 kDa, observed, 130 kDa Clonality: Rabbit monoclonal antibody Clone ID: 23GB5575 Species Reactivity: Human, Mouse, Rat Applications Tested: Western Blotting (WB), Flow Cytometry (FCM)

### **Immunogen**

A synthesized peptide derived from human GOLPH4

### **Isotype**

Rabbit IgG

### **Storage Buffer**

Supplied in PBS (pH 7.4) containing 50% glycerol, and 0.02% sodium azide.

#### Storage

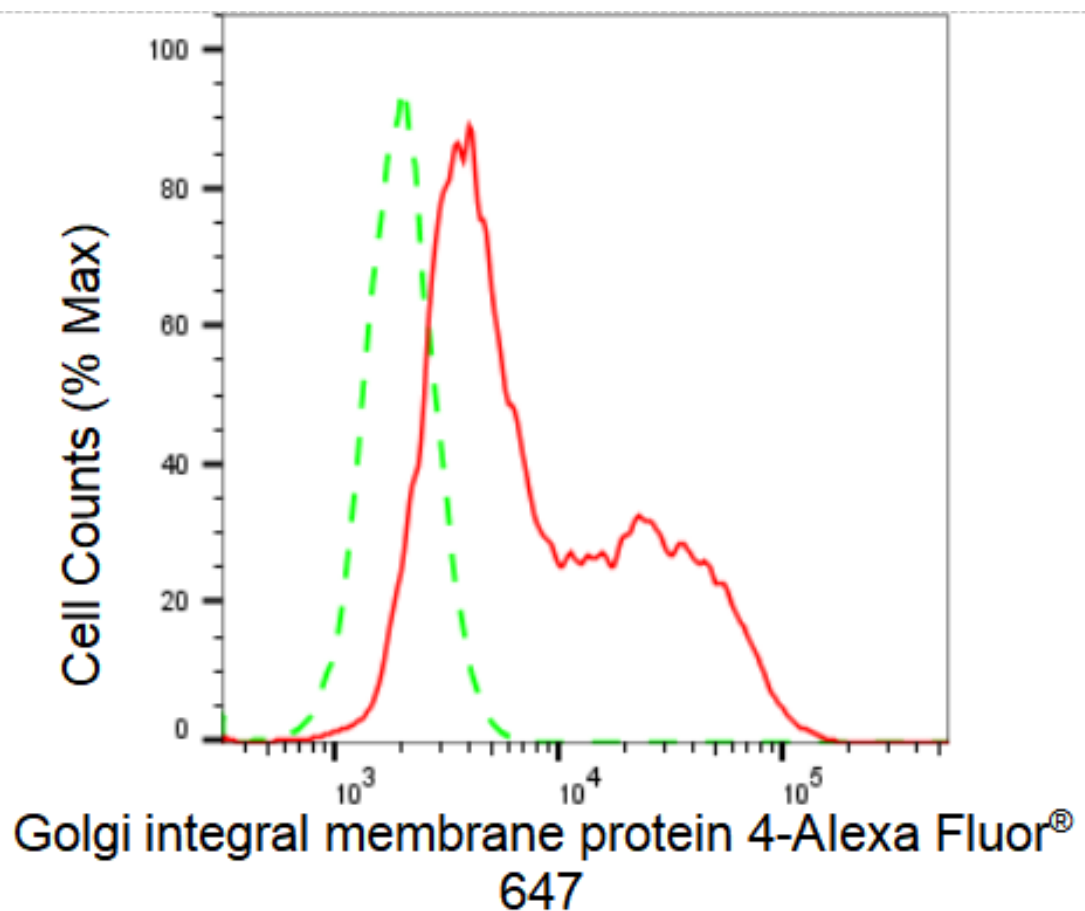
Store at -20 °C for one year.

#### Recommended Dilutions

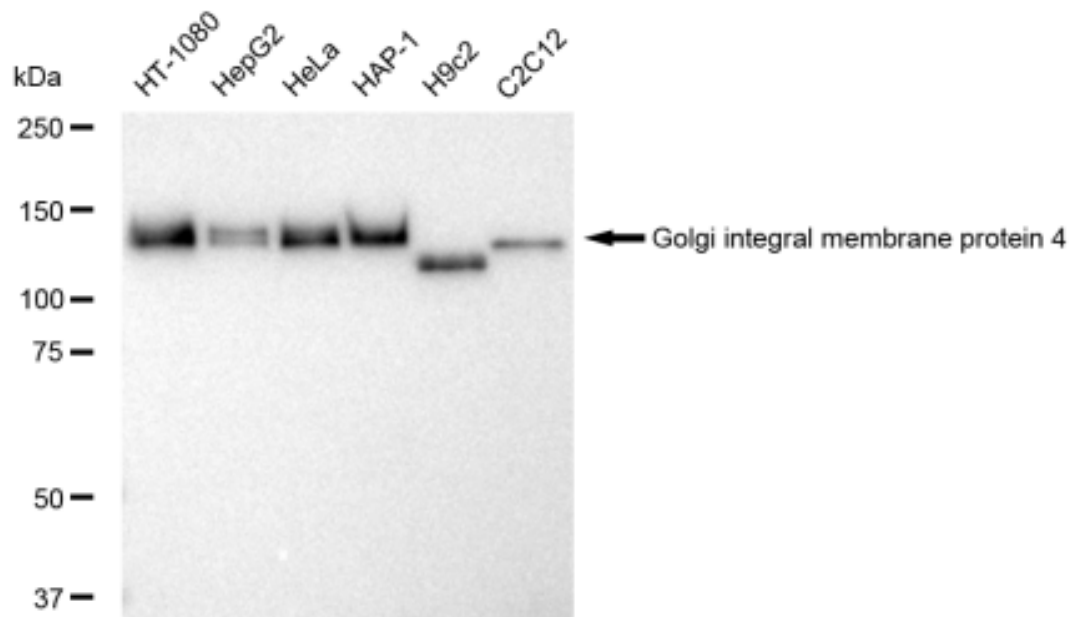
Western Blotting (WB): 1:1,000-1:5,000 Flow Cytometry (FCM): 1:2,000

#### Protocols

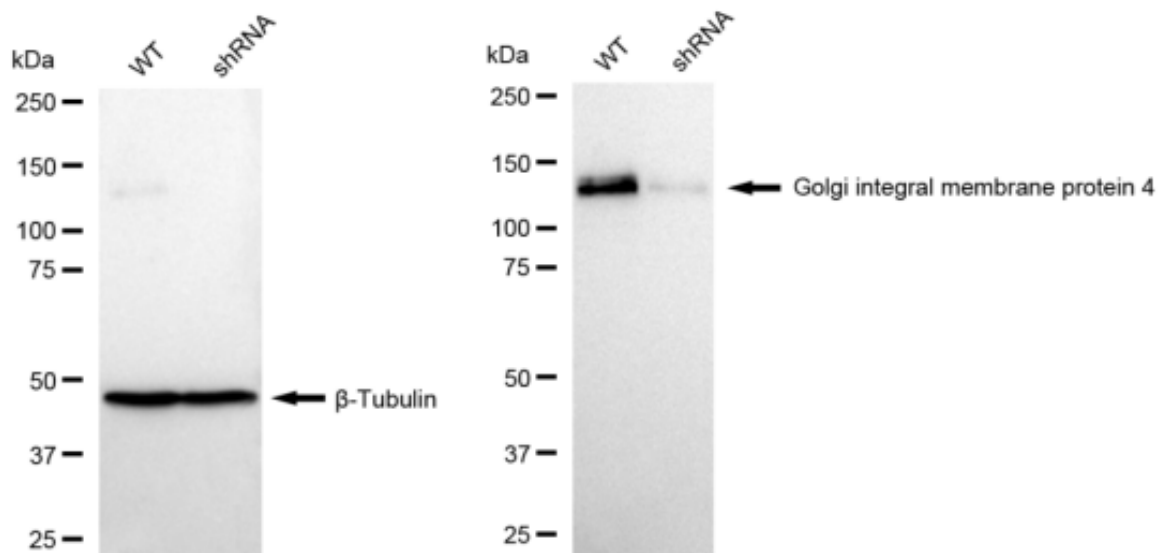
For general and specific antibody protocols please visit our website. Read all instructions before using this product.



Flow cytometric analysis of Golgi integral membrane protein 4 expression in HAP-1 cells using Golgi integral membrane protein 4 antibody 1:2,000. Green, isotype control; red, Golgi integral membrane protein 4.



Western blotting analysis using anti-Golgi integral membrane protein 4 antibody 1:5,000 and HRP-conjugated goat anti-rabbit secondary antibody 1:20,000 respectively. Image was developed using FeQ™ ECL Substrate Kit .



Western blotting analysis using anti-Golgi integral membrane protein 4 antibody 1:5,000 and HRP-conjugated goat anti-rabbit secondary antibody 1:20,000 respectively. Image was developed using FeQ™ ECL Substrate Kit .