



SunLong Biotech Co.,LTD
Tel: 0086-571- 56623320 Fax:0086-571- 56623318
E-mail:sales@sunlongbiotech.com
www.sunlongbiotech.com

[KD-Validated] Anti-Golgin A2 Rabbit Monoclonal Antibody

Cat No.: KD-10412

Aliases:

GOLGA2; Golgin A2; GM130; Golgin-95; Golgi Autoantigen, Golgin Subfamily A, 2; 130 KDa Cis-Golgi Matrix Protein; Golgin Subfamily A Member 2; Golgi Matrix Protein GM130; GM130 Autoantigen; SY11 Protein; GOLGIN-95; DEDHMB

Background:

UniProt Entry: [Q08379](#);NCBI Gene Entry: [2801](#)

Application Information

Molecular Weight: Predicted, 113 kDa, observed, 130 kDa Clonality: Rabbit monoclonal antibody Clone ID: 23GB5570 Species Reactivity: Human, Mouse, Rat Applications Tested: Western Blotting (WB), Flow Cytometry (FCM), Immunocytochemistry (IC)

Immunogen

A synthesized peptide derived from human GM130

Isotype

Rabbit IgG

Storage Buffer

Supplied in PBS (pH 7.4) containing 50% glycerol, and 0.02% sodium azide.

Storage

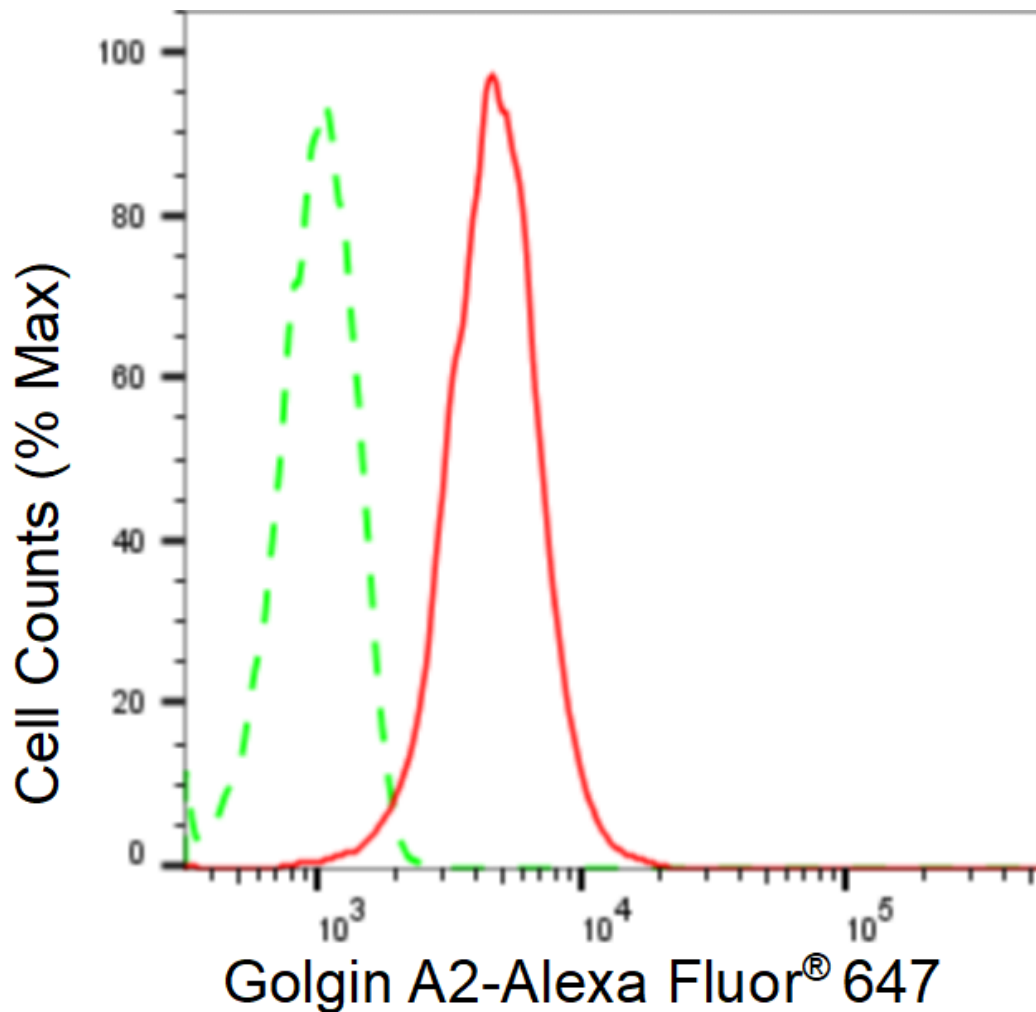
Store at -20 °C for one year.

Recommended Dilutions

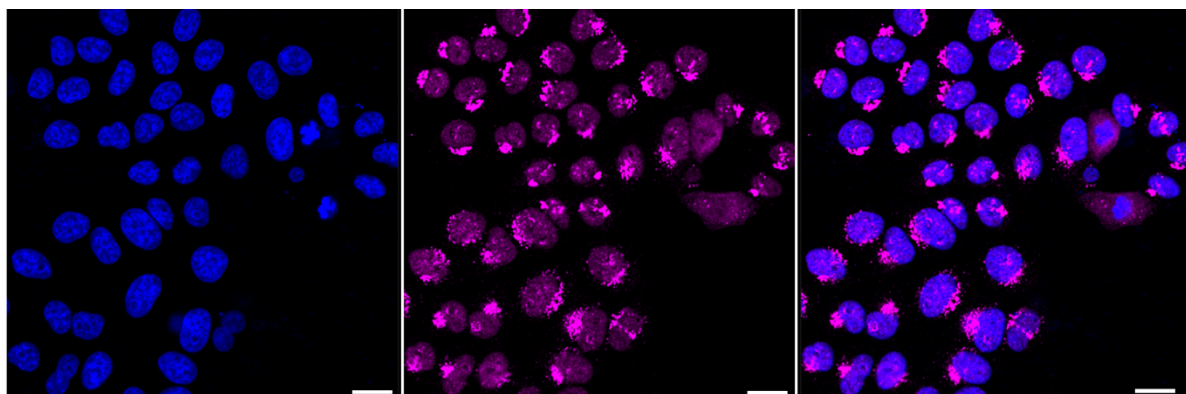
Western Blotting (WB): 1:1,000-1:5,000 Flow Cytometry (FCM): 1:2,000
Immunocytochemistry (IC): 1:1,000

Protocols

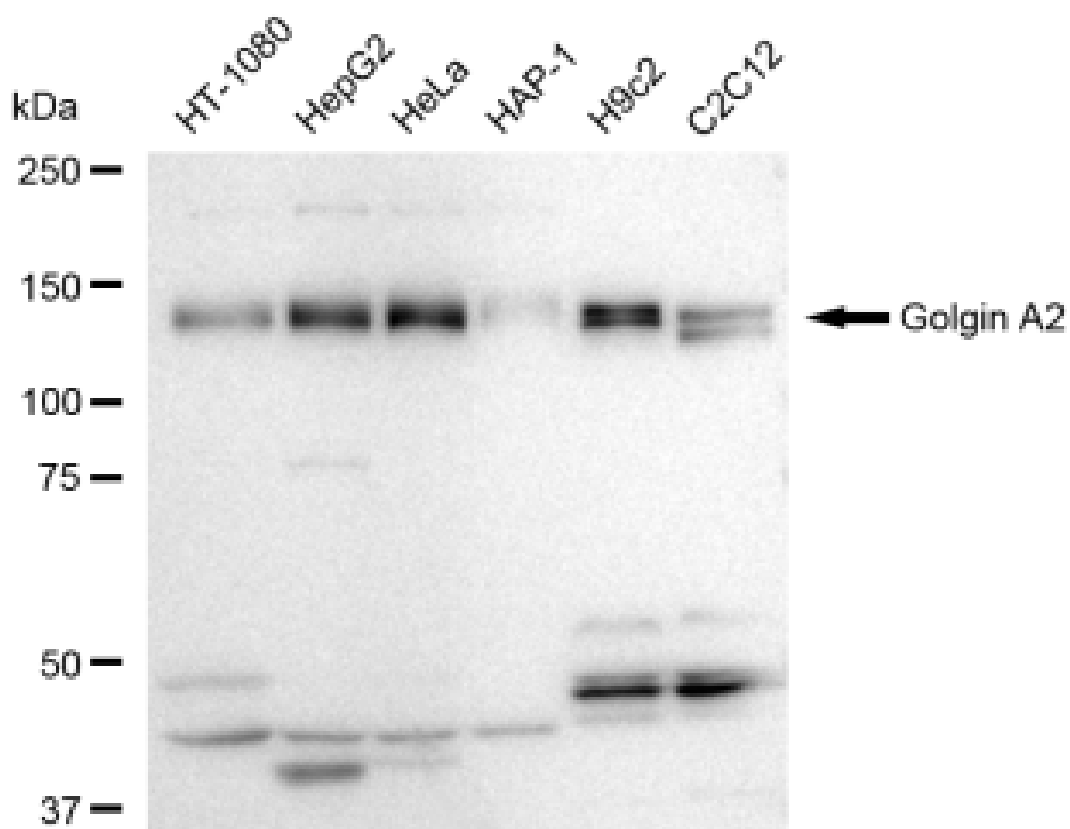
For general and specific antibody protocols please visit our website. Read all instructions before using this product.



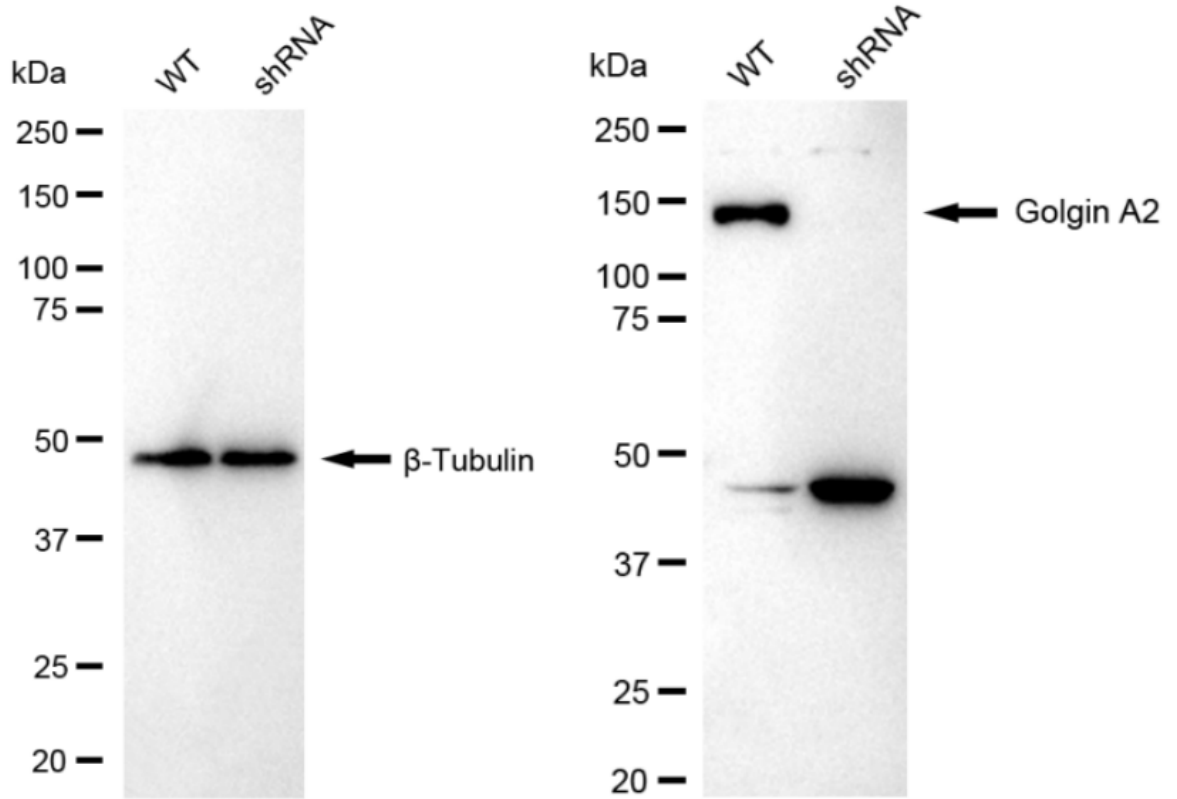
Flow cytometric analysis of Golgin A2 expression in HepG2 cells using Golgin A2 antibody 1:2,000. Green, isotype control; red, Golgin A2.



Immunocytochemical staining of HepG2 cells with anti-Golgin A2 antibody 1:1,000. Nuclei were stained blue with DAPI; Golgin A2 was stained magenta with Alexa Fluor® 647. Images were taken using Leica stellaris 5. Protein abundance based on laser Intensity and smart gain: High. Scale bar: 20 μ m.



Western blotting analysis using anti-Golgin A2 antibody 1:5,000 and HRP-conjugated goat anti-rabbit secondary antibody 1:20,000 respectively. Image was developed using FeQ™ ECL Substrate Kit .



Western blotting analysis using anti-Golgin A2 antibody 1:5,000 and HRP-conjugated goat anti-rabbit secondary antibody 1:20,000 respectively. Image was developed using NaQ™ ECL Substrate Kit .