



SunLong Biotech Co.,LTD
Tel: 0086-571- 56623320 Fax:0086-571- 56623318
E-mail:sales@sunlongbiotech.com
www.sunlongbiotech.com

[KD-Validated] Anti-G protein subunit beta 2 Rabbit Monoclonal Antibody

Cat No.: KD-10411

Aliases:

GNB2; Transducin Beta Chain 2; Signal-Transducing Guanine Nucleotide-Binding Regulatory Protein Beta Subunit 2; Guanine Nucleotide Binding Protein (G Protein), Beta Polypeptide 2; Guanine Nucleotide-Binding Protein G(I)/G(S)/G(T) Beta Subunit 2; Guanine Nucleotide-Binding Protein G(I)/G(S)/G(T) Subunit Beta-2; G Protein, Beta-2 Subunit; G Protein Subunit Beta-2; Heterotrimeric Guanine Nucleotide-Binding Protein 2C1; Epididymis Secretory Sperm Binding Protein; SSS4; NEDHYDF; HG2C1;SSS4

Background:

UniProt Entry: [P62879](#);NCBI Gene Entry: [2783](#)

Application Information

Molecular Weight: Predicted, 37 kDa, observed, 35 kDa Clonality: Rabbit monoclonal antibody Clone ID: 23GB1205 Species Reactivity: Human, Mouse, Rat Applications Tested: Western Blotting (WB), Flow Cytometry (FCM)

Immunogen

A synthesized peptide derived from human GNB2

Isotype

Rabbit IgG

Storage Buffer

Supplied in PBS (pH 7.4) containing 50% glycerol, and 0.02% sodium azide.

Storage

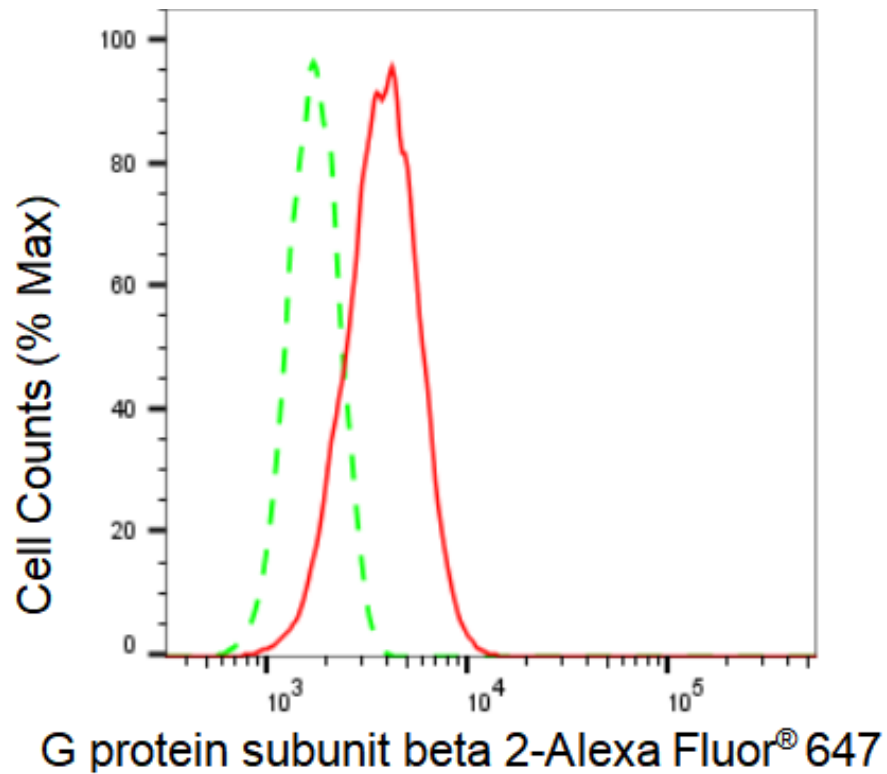
Store at -20 °C for one year.

Recommended Dilutions

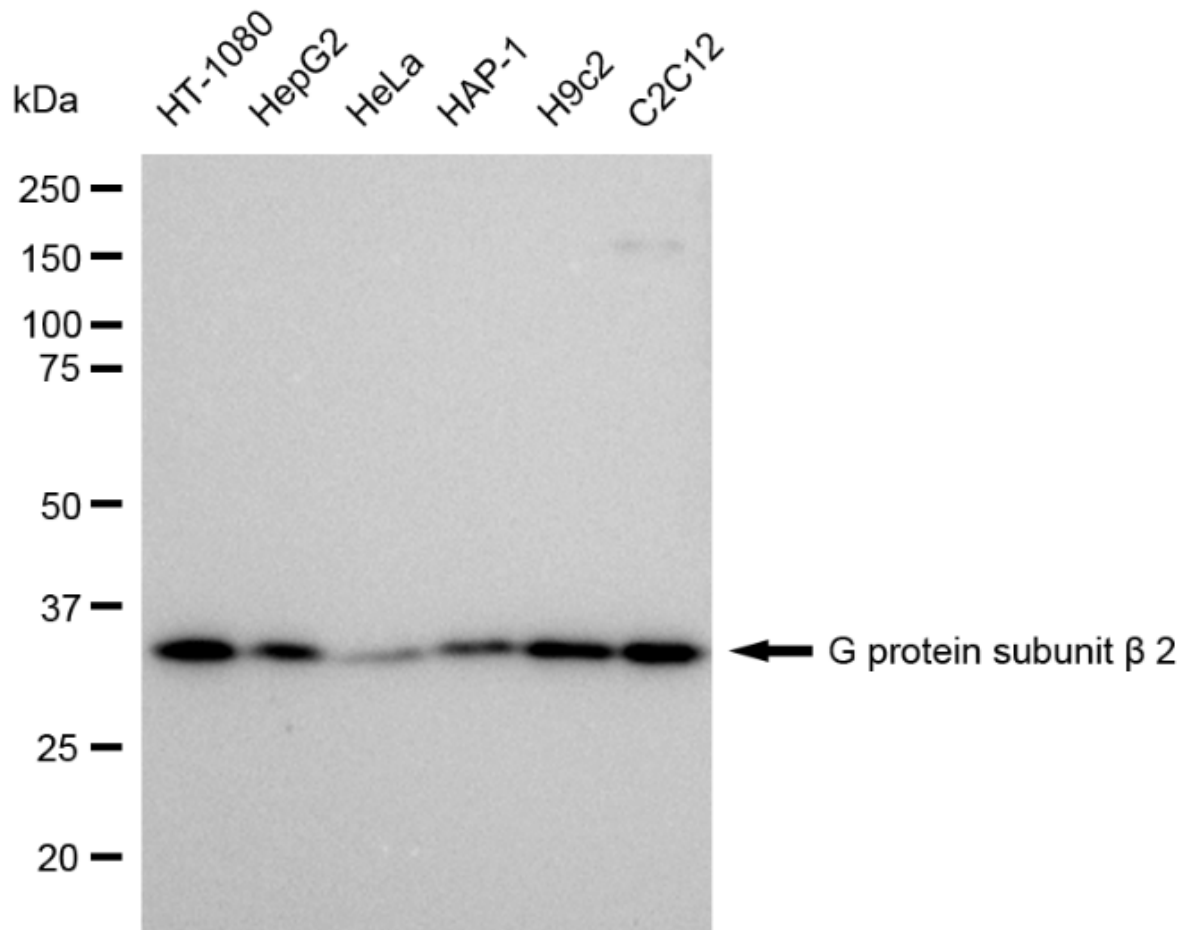
Western Blotting (WB): 1:1,000-1:5,000 Flow Cytometry (FCM): 1:2,000

Protocols

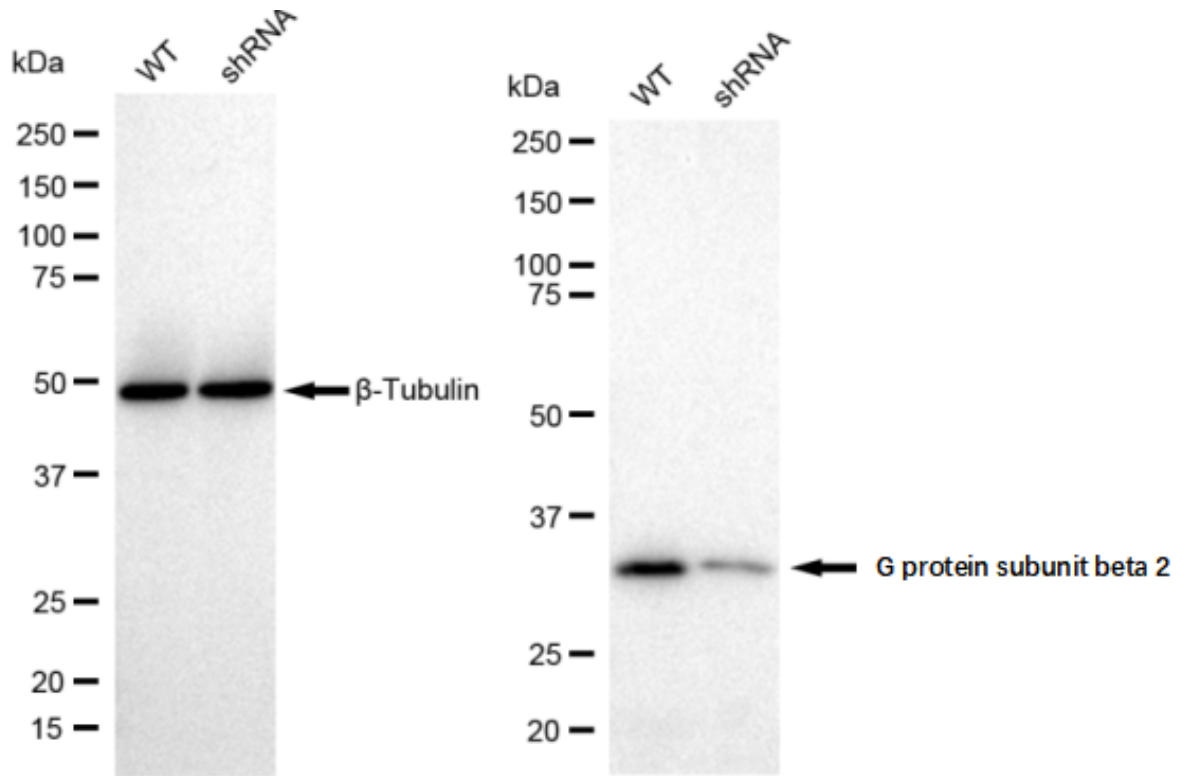
For general and specific antibody protocols please visit our website. Read all instructions before using this product.



Flow cytometric analysis of G protein subunit beta 2 expression in HT-1080 cells using G protein subunit beta 2 antibody 1:2,000. Green, isotype control; red, G protein subunit beta 2.



Western blotting analysis using anti-G protein subunit beta 2 antibody 1:5,000 and HRP-conjugated goat anti-rabbit secondary antibody 1:20,000 respectively. Image was developed using FeQ™ ECL Substrate Kit .



Western blotting analysis using anti-G protein subunit beta 2 antibody 1:5,000 and HRP-conjugated goat anti-rabbit secondary antibody 1:20,000 respectively. Image was developed using FeQ™ ECL Substrate Kit .