



SunLong Biotech Co.,LTD
Tel: 0086-571- 56623320 Fax:0086-571- 56623318
E-mail:sales@sunlongbiotech.com
www.sunlongbiotech.com

[KD-Validated] Anti-G protein subunit alpha q Rabbit Monoclonal Antibody

Cat No.: KD-10410

Aliases:

G Protein Subunit Alpha Q; GAQ; G-ALPHA-Q; Guanine Nucleotide Binding Protein (G Protein), Q Polypeptide; Guanine Nucleotide-Binding Protein G(Q) Subunit Alpha; Guanine Nucleotide-Binding Protein Alpha-Q; Epididymis Secretory Sperm Binding Protein; CMAL; CMC1; SWS

Background:

UniProt Entry: [P50148](#);NCBI Gene Entry: [2776](#)

Application Information

Molecular Weight: Predicted, 42 kDa, observed, 42 kDa Clonality: Rabbit monoclonal antibody Clone ID: 23GB1295 Species Reactivity: Human, Mouse, Rat Applications Tested: Western Blotting (WB), Immunocytochemistry (IC)

Immunogen

A synthesized peptide derived from human GNAQ

Isotype

Rabbit IgG

Storage Buffer

Supplied in PBS (pH 7.4) containing 50% glycerol, and 0.02% sodium azide.

Storage

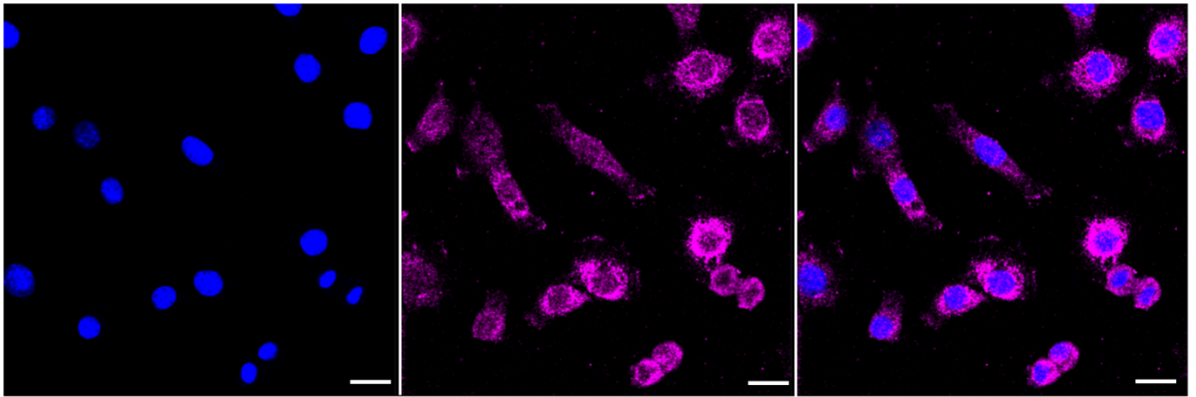
Store at -20 °C for one year.

Recommended Dilutions

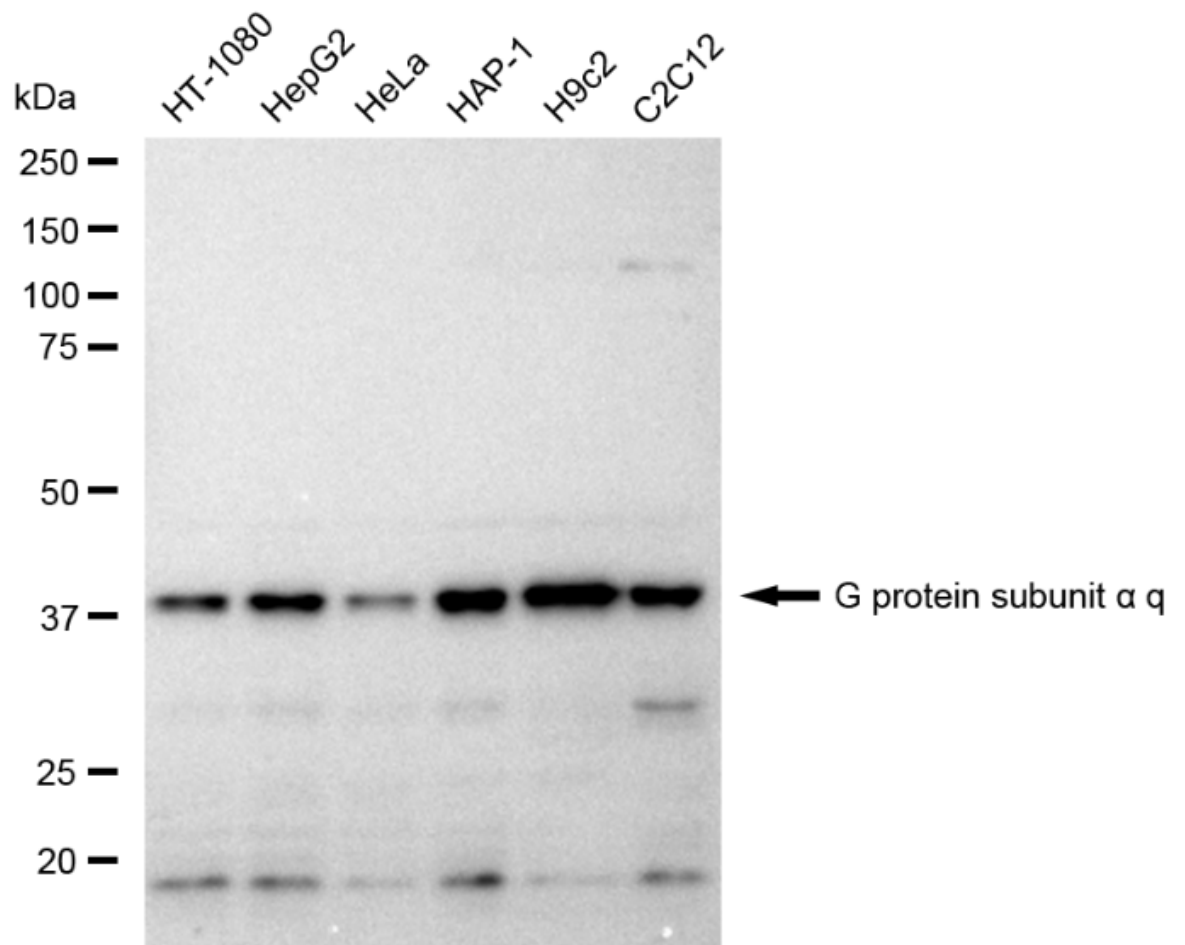
Western Blotting (WB): 1:1,000-1:5,000 Immunocytochemistry (IC): 1:1,000

Protocols

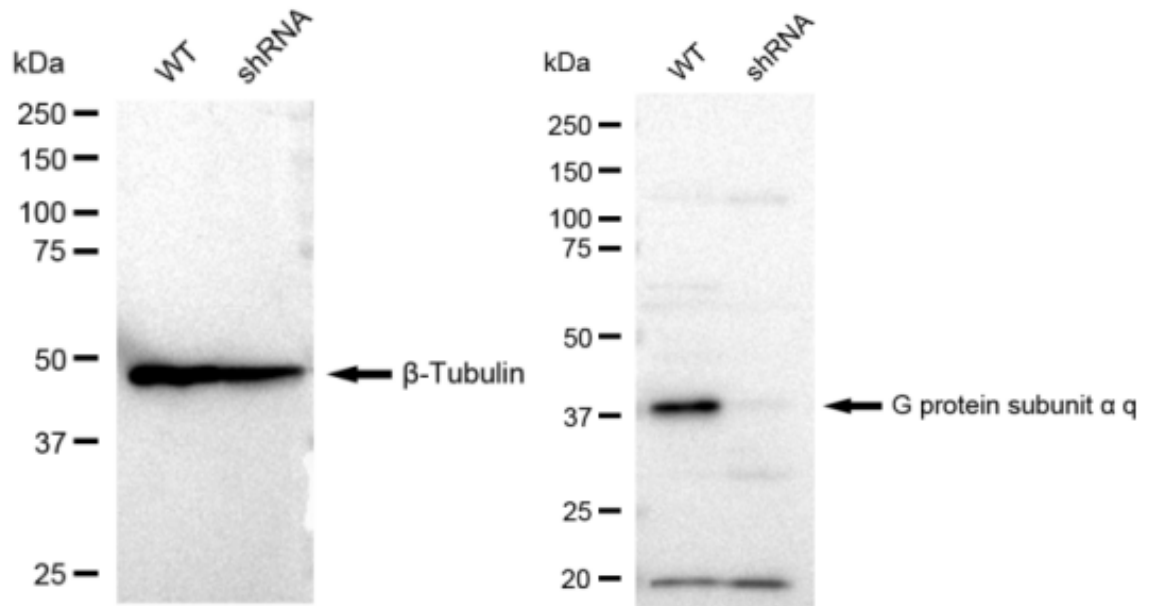
For general and specific antibody protocols please visit our website. Read all instructions before using this product.



Immunocytochemical staining of C2C12 cells with G protein subunit alpha q antibody 1:1,000. Nuclei were stained blue with DAPI; G protein subunit alpha q was stained magenta with Alexa Fluor® 647. Images were taken using Leica stellaris 5. Protein abundance based on laser Intensity and smart gain: Medium. Scale bar: 20 µm.



Western blotting analysis using anti-G protein subunit alpha q antibody 1:5,000 and HRP-conjugated goat anti-rabbit secondary antibody 1:20,000 respectively. Image was developed using FeQ™ ECL Substrate Kit .



Western blotting analysis using anti-G protein subunit alpha q antibody 1:5,000 and HRP-conjugated goat anti-rabbit secondary antibody 1:20,000 respectively. Image was developed using FeQ™ ECL Substrate Kit .