



SunLong Biotech Co.,LTD
Tel: 0086-571- 56623320 Fax:0086-571- 56623318
E-mail:sales@sunlongbiotech.com
www.sunlongbiotech.com

[KD-Validated] Anti-Glutamate-ammonia ligase Rabbit Monoclonal Antibody

Cat No.: KD-10409

Aliases:

Glutamate-Ammonia Ligase; Glutamine Synthetase; GLNS; Palmitoyltransferase GLUL; EC 6.3.1.2; GS; Glutamate-Ammonia Ligase (Glutamine Synthase); Cell Proliferation-Inducing Protein; Proliferation-Inducing Protein; Glutamate--Ammonia Ligase; Glutamate Decarboxylase; Glutamine Synthase; EC 2.3.1.225; PIG43; PIG59

Background:

UniProt Entry: [P15104](#);NCBI Gene Entry: [2752](#)

Application Information

Molecular Weight: Predicted, 42 kDa, observed, 42 kDa Clonality: Rabbit monoclonal antibody Clone ID: 23GB1345 Species Reactivity: Human, Mouse, Rat Applications Tested: Western Blotting (WB), Flow Cytometry (FCM), Immunocytochemistry (IC)

Immunogen

A synthesized peptide derived from human Glutamine Synthetase

Isotype

Rabbit IgG

Storage Buffer

Supplied in PBS (pH 7.4) containing 50% glycerol, and 0.02% sodium azide.

Storage

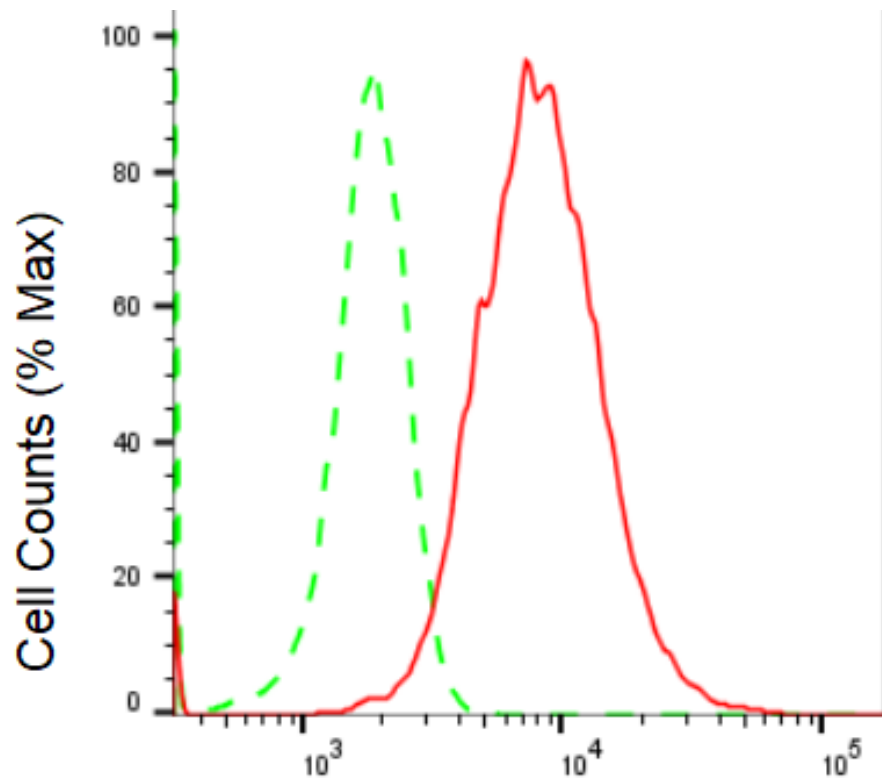
Store at -20 °C for one year.

Recommended Dilutions

Western Blotting (WB): 1:1,000-1:5,000 Flow Cytometry (FCM): 1:2,000
Immunocytochemistry (IC): 1:1,000

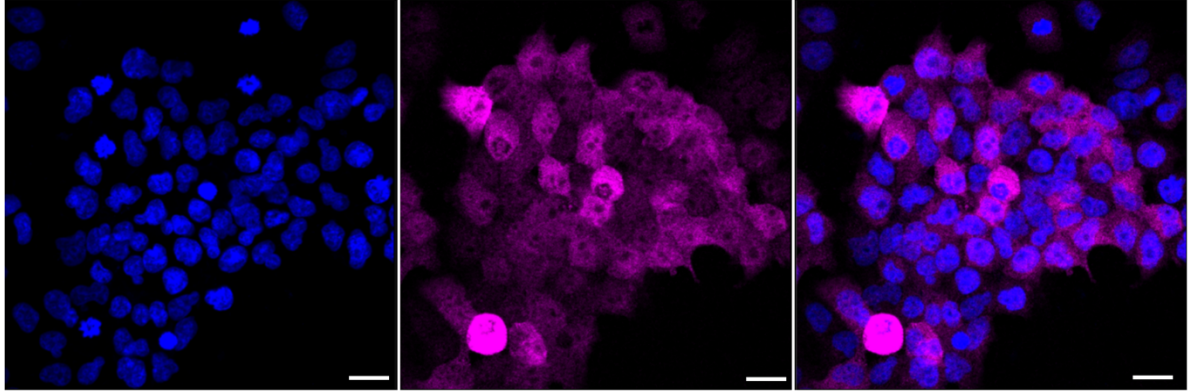
Protocols

For general and specific antibody protocols please visit our website. Read all instructions before using this product.

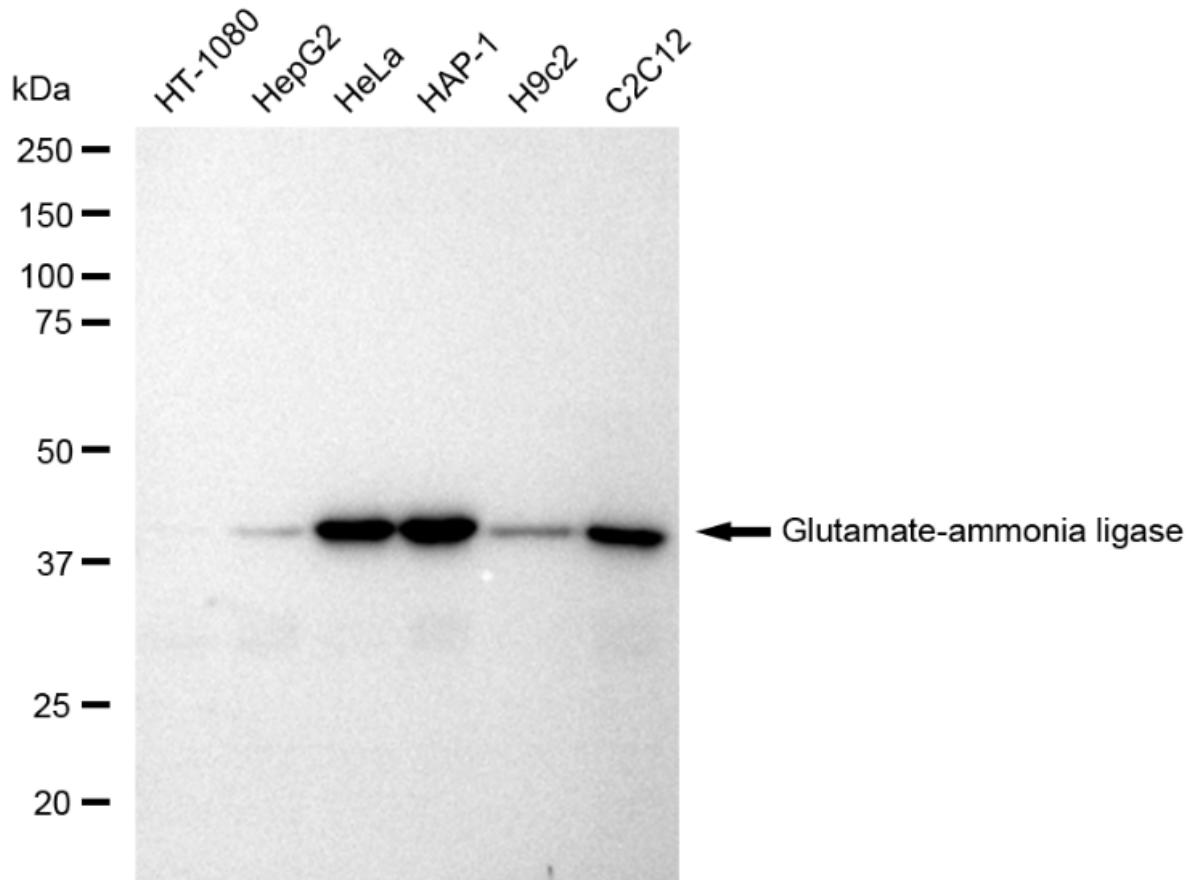


Glutamate-ammonia ligase-Alexa Fluor® 647

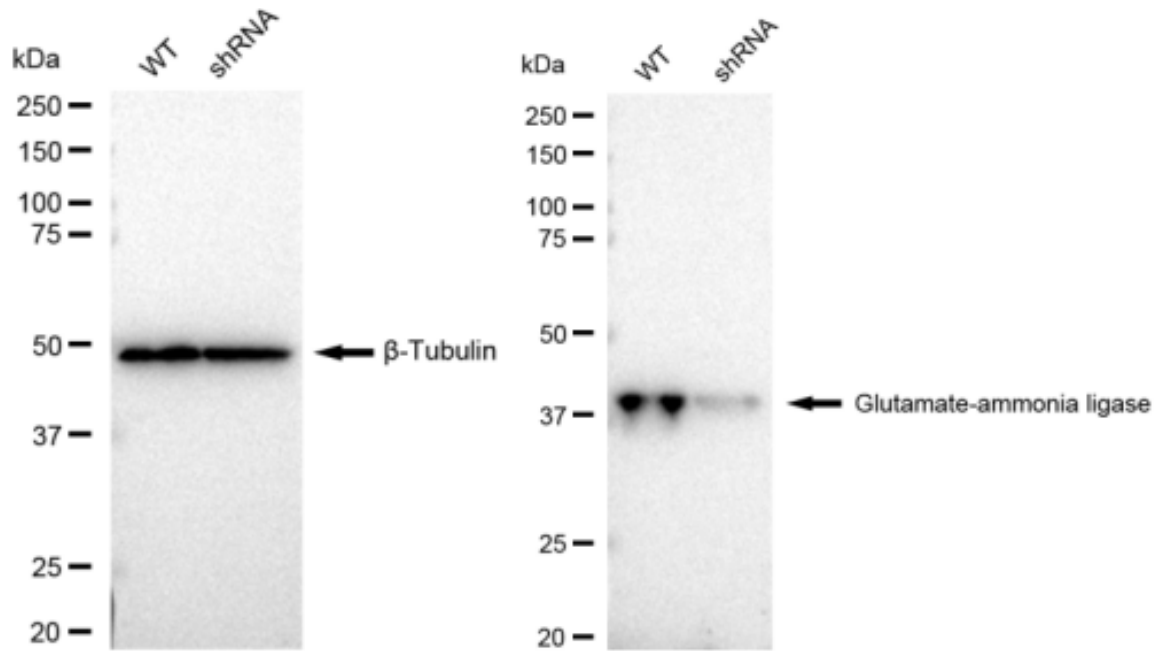
Flow cytometric analysis of Glutamate-ammonia ligase expression in HeLa cells using Glutamate-ammonia ligase antibody 1:2,000. Green, isotype control; red, Glutamate-ammonia ligase.



Immunocytochemical staining of HeLa cells with Glutamate-ammonia ligase antibody 1:1,000. Nuclei were stained blue with DAPI; Glutamate-ammonia ligase was stained magenta with Alexa Fluor® 647. Images were taken using Leica stellaris 5. Protein abundance based on laser Intensity and smart gain: Medium. Scale bar: 20 μ m.



Western blotting analysis using anti-Glutamate-ammonia ligase antibody 1:5,000 and HRP-conjugated goat anti-rabbit secondary antibody 1:20,000 respectively. Image was developed using FeQ™ ECL Substrate Kit .



Western blotting analysis using anti-Glutamate-ammonia ligase antibody 1:5,000 and HRP-conjugated goat anti-rabbit secondary antibody 1:20,000 respectively. Image was developed using FeQ™ ECL Substrate Kit .