



SunLong Biotech Co.,LTD
Tel: 0086-571- 56623320 Fax:0086-571- 56623318
E-mail:sales@sunlongbiotech.com
www.sunlongbiotech.com

[KD-Validated] Anti-Glutaminase Rabbit Monoclonal Antibody

Cat No.: KD-10408

Aliases:

GLS; Glutaminase; GLS1; K-Glutaminase; KIAA0838; GAC; GAM; KGA; Glutaminase Kidney Isoform, Mitochondrial; L-Glutamine Amidohydrolase; Glutaminase C; EC 3.5.1.2; Glutaminase, Phosphate; Activated; CASGID; EIEE71; AAD20; DEE71; GDPAG

Background:

UniProt Entry: [O94925](#);NCBI Gene Entry: [2744](#)

Application Information

Molecular Weight: Predicted, 73 kDa, observed, 55-65 kDa Clonality: Rabbit monoclonal antibody Clone ID: 23GB1720 Species Reactivity: Human, Mouse, Rat Applications Tested: Western Blotting (WB), Flow Cytometry (FCM), Immunocytochemistry (IC)

Immunogen

A synthesized peptide derived from human Glutaminase

Isotype

Rabbit IgG

Storage Buffer

Supplied in PBS (pH 7.4) containing 50% glycerol, and 0.02% sodium azide.

Storage

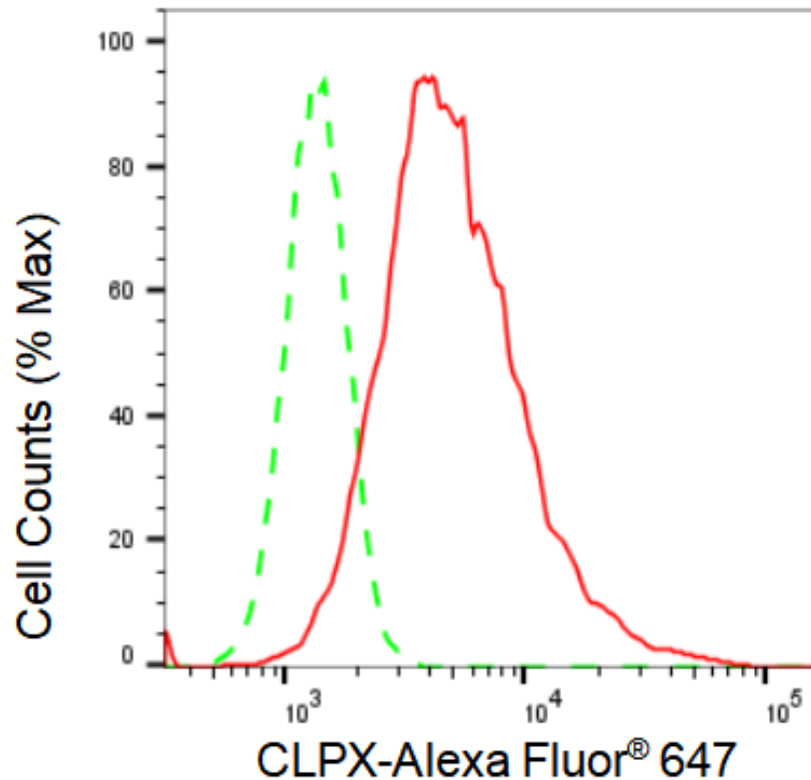
Store at -20 °C for one year.

Recommended Dilutions

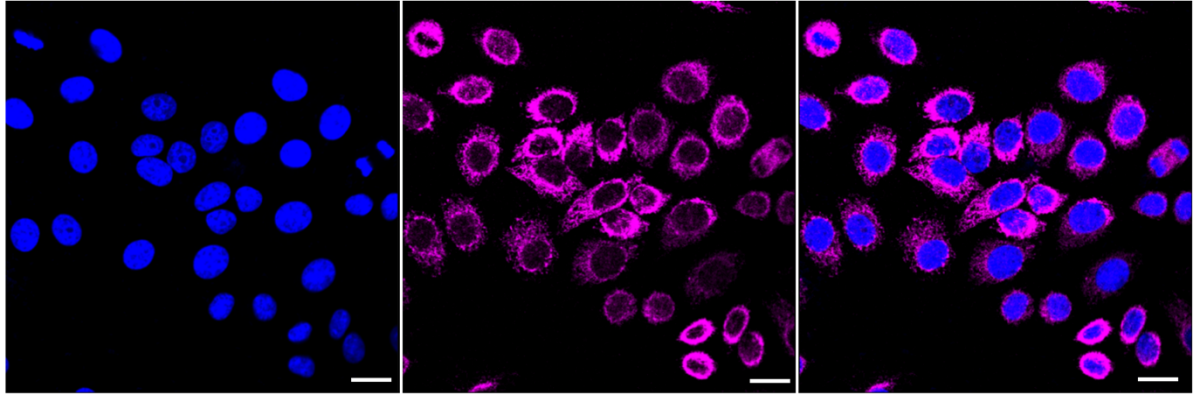
Western Blotting (WB): 1:1,000-1:5,000 Flow Cytometry (FCM): 1:2,000
Immunocytochemistry (IC): 1:1,000

Protocols

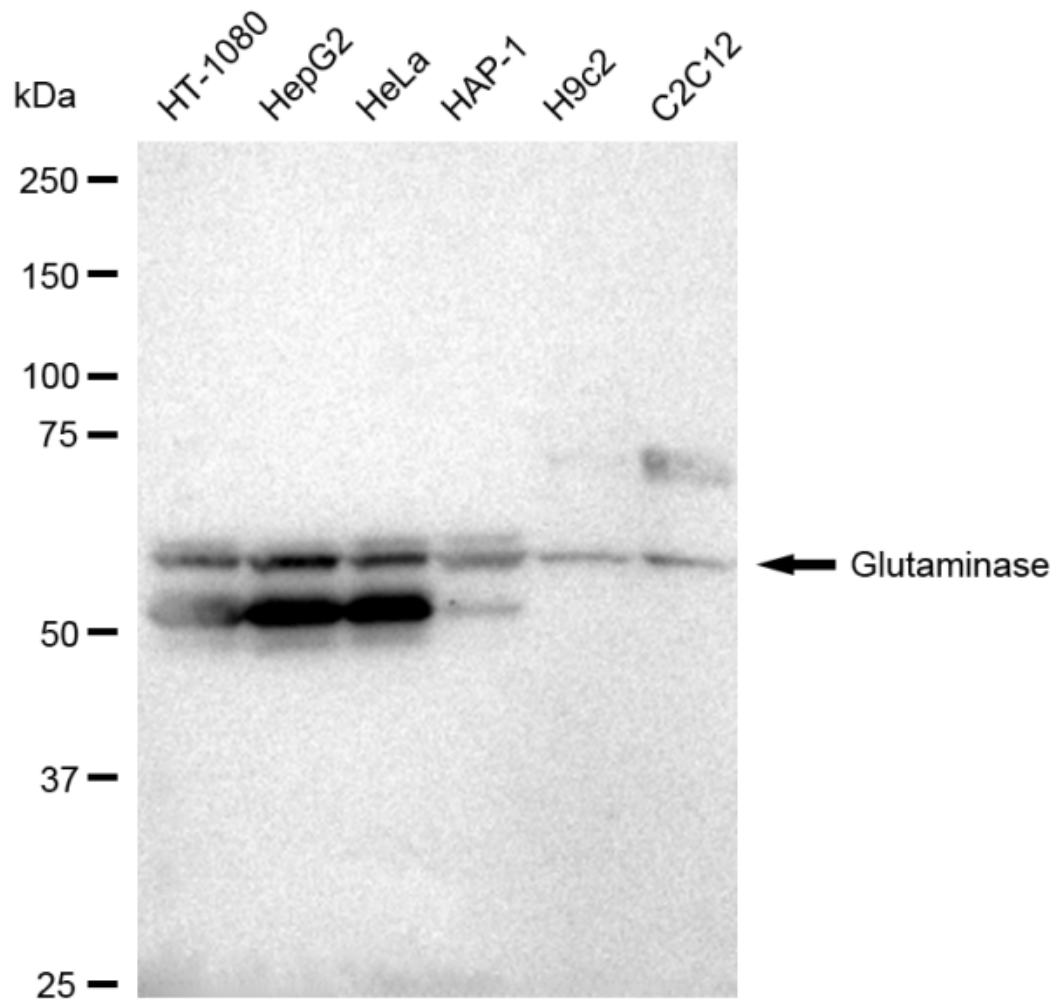
For general and specific antibody protocols please visit our website. Read all instructions before using this product.



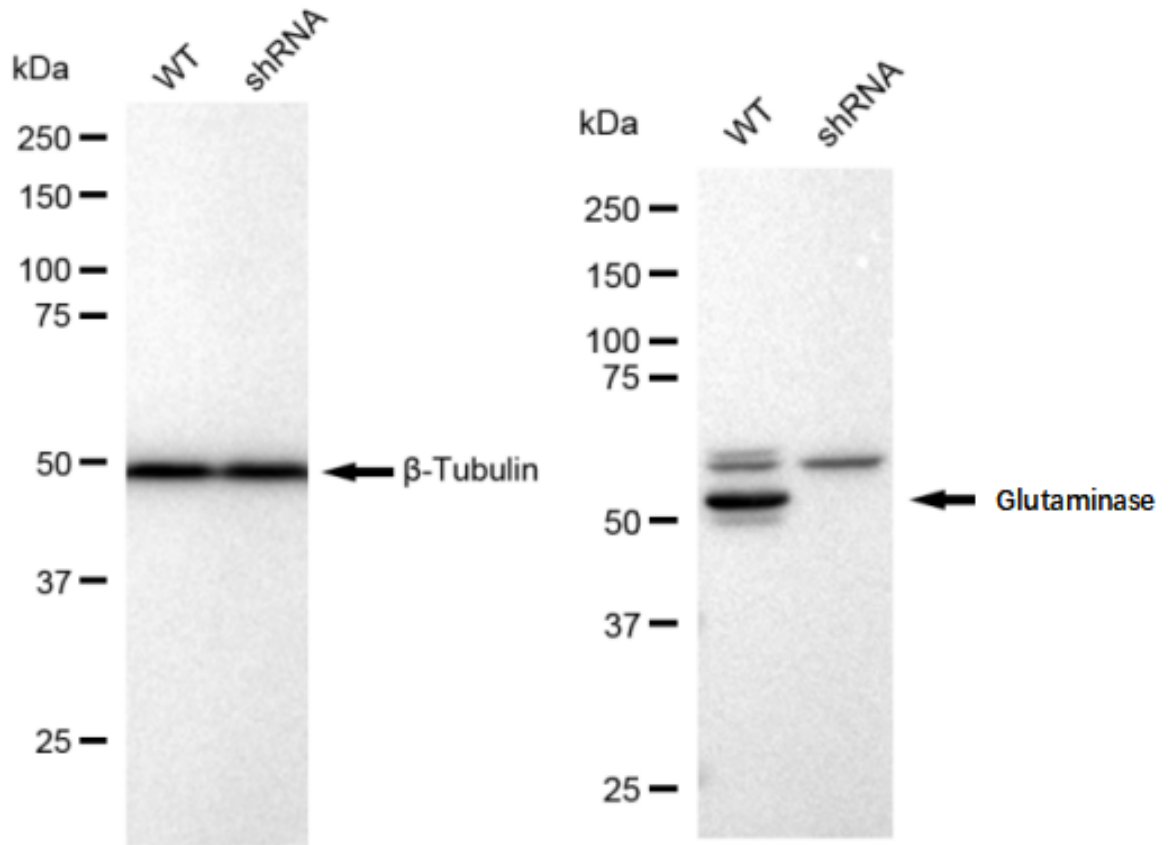
Flow cytometric analysis of Glutaminase expression in HepG2 cells using Glutaminase antibody 1:2,000. Green, isotype control; red, Glutaminase.



Immunocytochemical staining of HepG2 cells with Glutaminase antibody 1:1,000. Nuclei were stained blue with DAPI; Glutaminase was stained magenta with Alexa Fluor® 647. Images were taken using Leica stellaris 5. Protein abundance based on laser Intensity and smart gain: Medium. Scale bar: 20 μ m.



Western blotting analysis using anti-Glutaminase antibody 1:5,000 and HRP-conjugated goat anti-rabbit secondary antibody 1:20,000 respectively. Image was developed using FeQ™ ECL Substrate Kit . Glutaminase, caseinolytic mitochondrial matrix peptidase chaperone subunit X.



Western blotting analysis using anti-Glutaminase antibody 1:5,000 and HRP-conjugated goat anti-rabbit secondary antibody 1:20,000 respectively. Image was developed using FeQ™ ECL Substrate Kit .