



SunLong Biotech Co.,LTD
Tel: 0086-571- 56623320 Fax:0086-571- 56623318
E-mail:sales@sunlongbiotech.com
www.sunlongbiotech.com

[KD-Validated] Anti-Glyoxalase I Rabbit Monoclonal Antibody

Cat No.: KD-10407

Aliases:

GLO1; Glyoxalase I; Lactoylglutathione Lyase; GLOD1; S-D-Lactoylglutathione Methylglyoxal Lyase; Ketone-Aldehyde Mutase; Methylglyoxalase; Aldoketomutase; EC 4.4.1.5; Glx I; Epididymis Secretory Protein Li 74; Glyoxalase Domain Containing 1; Lactoyl Glutathione Lyase; HEL-S-74; GLYI

Background:

UniProt Entry: [Q04760](#);NCBI Gene Entry: [2739](#)

Application Information

Molecular Weight: Predicted, 21 kDa, observed, 21 kDa Clonality: Rabbit monoclonal antibody Clone ID: 23GB5555 Species Reactivity: Human, Mouse, Rat Applications Tested: Western Blotting (WB), Flow Cytometry (FCM)

Immunogen

A synthesized peptide derived from human GLO1

Isotype

Rabbit IgG

Storage Buffer

Supplied in PBS (pH 7.4) containing 50% glycerol, and 0.02% sodium azide.

Storage

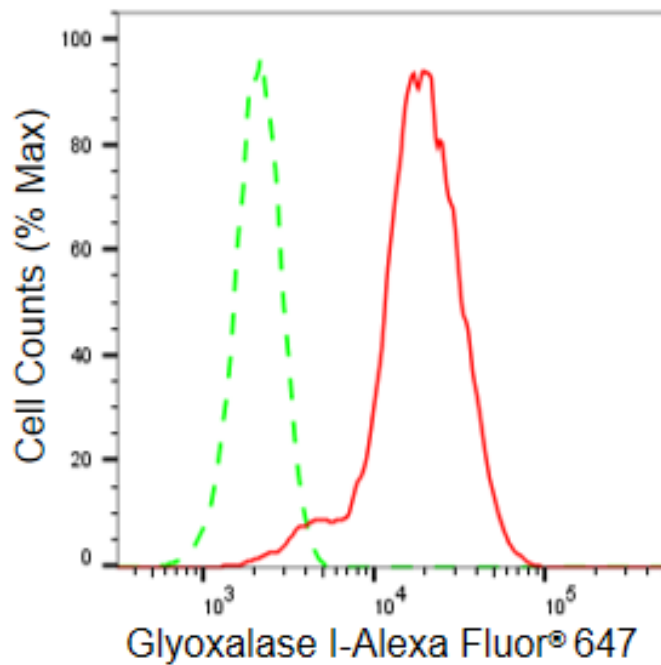
Store at -20 °C for one year.

Recommended Dilutions

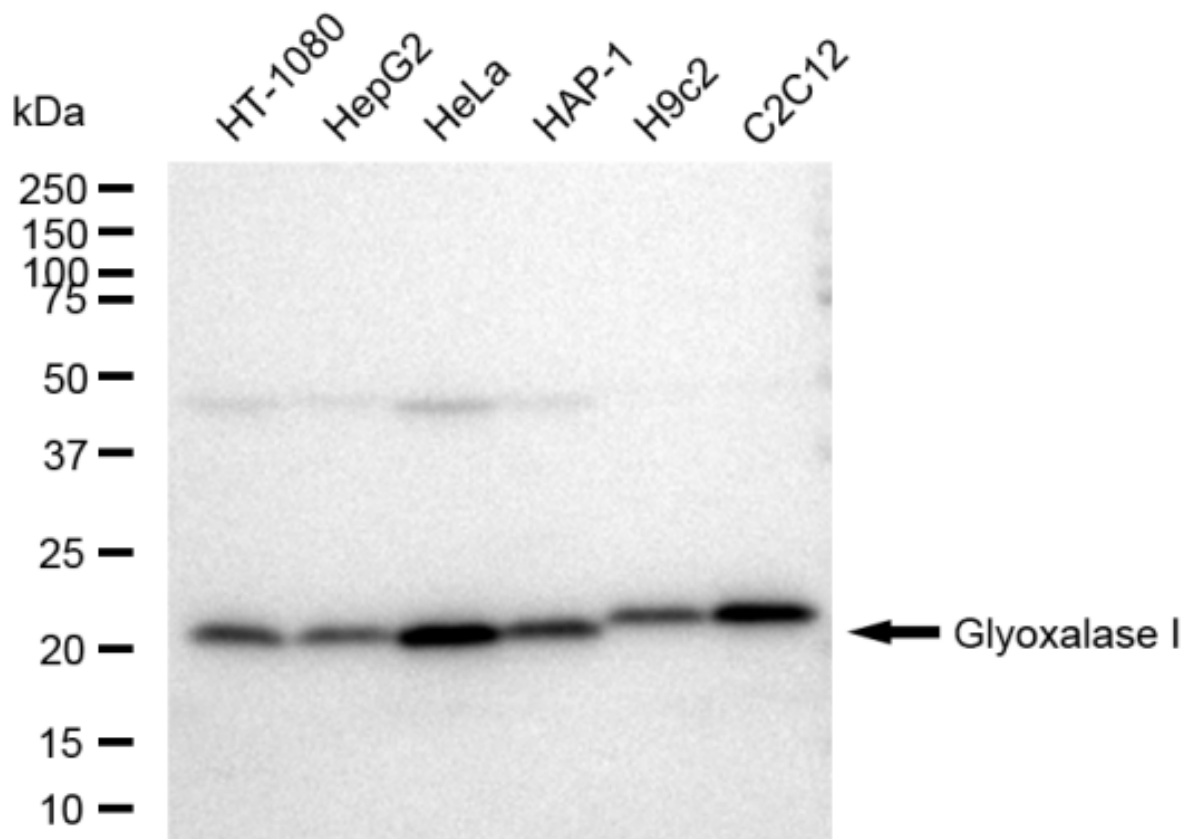
Western Blotting (WB): 1:1,000-1:5,000 Flow Cytometry (FCM): 1:2,000

Protocols

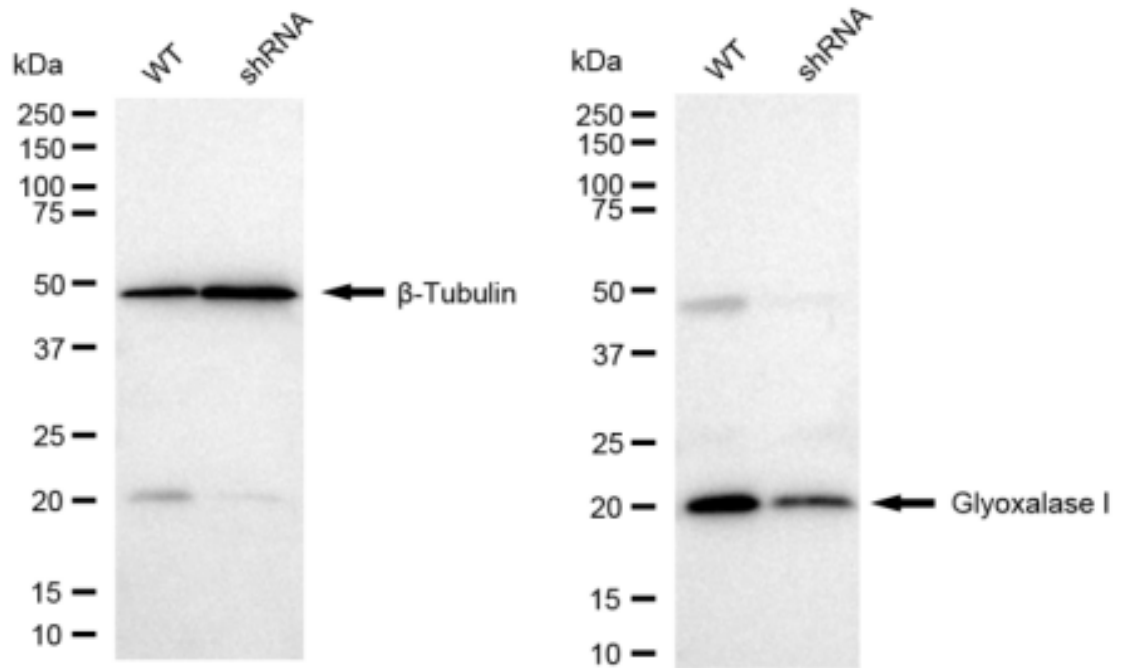
For general and specific antibody protocols please visit our website. Read all instructions before using this product.



Flow cytometric analysis of Glyoxalase I expression in HeLa cells using Glyoxalase I antibody 1:2,000. Green, isotype control; red, Glyoxalase I.



Western blotting analysis using anti-Glyoxalase I antibody 1:5,000 and HRP-conjugated goat anti-rabbit secondary antibody 1:20,000 respectively. Image was developed using FeQ™ ECL Substrate Kit .



Western blotting analysis using anti-Glyoxalase I antibody 1:5,000 and HRP-conjugated goat anti-rabbit secondary antibody 1:20,000 respectively. Image was developed using FeQ™ ECL Substrate Kit .