



SunLong Biotech Co.,LTD  
Tel: 0086-571- 56623320 Fax:0086-571- 56623318  
E-mail:sales@sunlongbiotech.com  
www.sunlongbiotech.com

## **[KD-Validated] Anti-Gli3 Rabbit Monoclonal Antibody**

Cat No.: KD-10406

### **Aliases:**

GLI Family Zinc Finger 3; PAP-A; PAPA1; PPDIV; PAPA; PAPB; ACLS; Glioma-Associated Oncogene Family Zinc Finger 3; GLI-Kruppel Family Member GLI3;Transcriptional Activator GLI3; Zinc Finger Protein GLI3; Oncogene GLI3; GLI3-190; GLI3FL; GCPS; PHS; Greig Cephalopolysyndactyly Syndrome; GLI3 Full-Length Protein; GLI3 Form Of 190 KDa; DNA-Binding Protein

### **Background:**

UniProt Entry: [P10071](#);NCBI Gene Entry: [2737](#)

### **Application Information**

Molecular Weight: Predicted, 170 kDa, observed, 190 kDa Clonality: Rabbit monoclonal antibody Clone ID: 24GB6105 Species Reactivity: Human Applctanions Tsed: Western Blotting (WB), Flow Cytometry (FCM), Immunocytochemistry (IC)

### **Immunogen**

A synthesized peptide derived from human Gli3

### **Isotype**

Rabbit IgG

### **Storage Buffer**

Supplied in PBS (pH 7.4) containing 50% glycerol, and 0.02% sodium azide.

### Storage

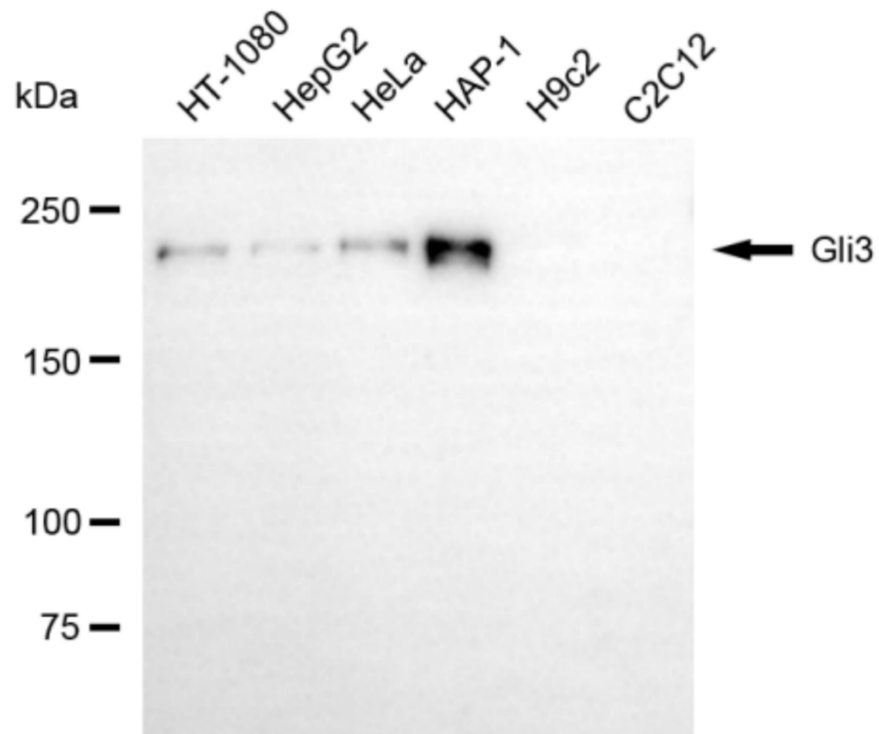
Store at -20 °C for one year.

### Recommended Dilutions

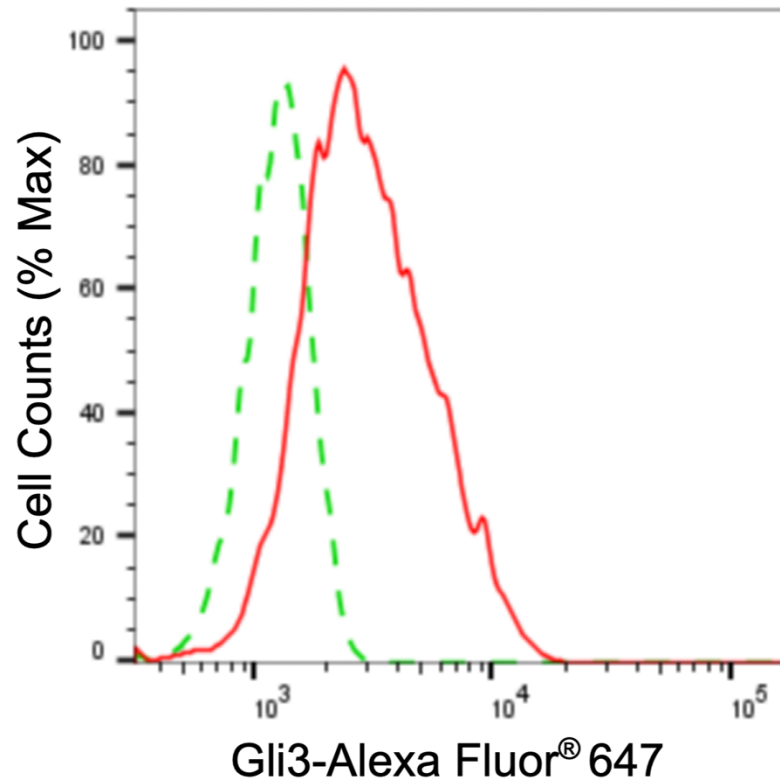
Western Blotting (WB): 1:1,000-1:5,000 Flow Cytometry (FCM): 1:2,000  
Immunocytochemistry (IC): 1:1,000

### Protocols

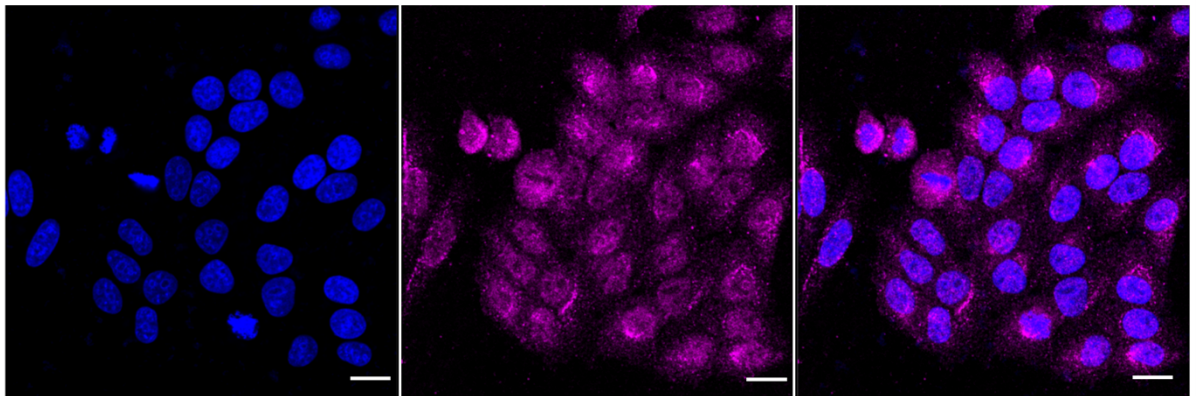
For general and specific antibody protocols please visit our website. Read all instructions before using this product.



Western blotting analysis using anti-gli3 antibody 1:5,000 and HRP-conjugated goat anti-rabbit secondary antibody 1:20,000 respectively. Image was developed using NaQ™ ECL Substrate Kit 1:5,000 and HRP-conjugated goat anti-rabbit secondary antibody 1:20,000 respectively. Image was developed using FeQ™ ECL Substrate Kit . GLI3, GLI Family Zinc Finger 3.



Flow cytometric analysis of gli3 expression in HepG2 cells using anti-gli3 antibody 1:2,000. Green, isotype control; red, gli3.



Immunocytochemical staining of HepG2 cells with anti-gli3 antibody 1:1,000. Nuclei were stained blue with DAPI; Gli3 was stained magenta with Alexa Fluor® 647. Images were taken using Leica stellaris 5. Protein abundance based on laser Intensity and smart gain: Medium. Scale bar, 20  $\mu$ m.