



SunLong Biotech Co.,LTD  
Tel: 0086-571- 56623320 Fax:0086-571- 56623318  
E-mail:sales@sunlongbiotech.com  
www.sunlongbiotech.com

## **[KD-Validated] Anti-Galactosidase beta 1 Rabbit Monoclonal Antibody**

Cat No.: KD-10405

### **Aliases:**

GLB1; Galactosidase Beta 1; ELNR1; EBP; Elastin Receptor 1, 67kDa; Elastin Binding Protein; Acid; Beta-Galactosidase; Beta-Galactosidase; EC 3.2.1.23; Lactase; Elastin Receptor 1 (67kD); Galactosidase, Beta 1; Elastin Receptor 1; MPS4B

### **Background:**

UniProt Entry: [P16278](#);NCBI Gene Entry: [2720](#)

### **Application Information**

Molecular Weight: Predicted, 76 kDa, observed, 76 kDa Clonality: Rabbit monoclonal antibody Clone ID: 23GB1580 Species Reactivity: Human Applications Tested: Western Blotting (WB), Flow Cytometry (FCM), Immunocytochemistry (IC)

### **Immunogen**

A synthesized peptide derived from human GLB1

### **Isotype**

Rabbit IgG

### **Storage Buffer**

Supplied in PBS (pH 7.4) containing 50% glycerol, and 0.02% sodium azide.

### Storage

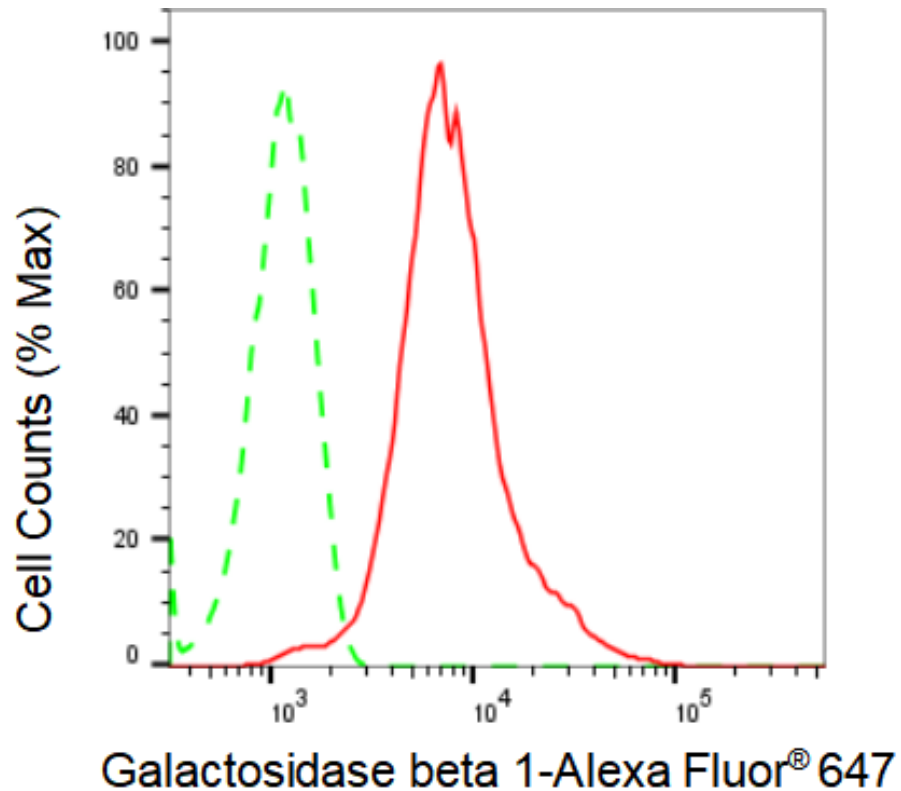
Store at -20 °C for one year.

### Recommended Dilutions

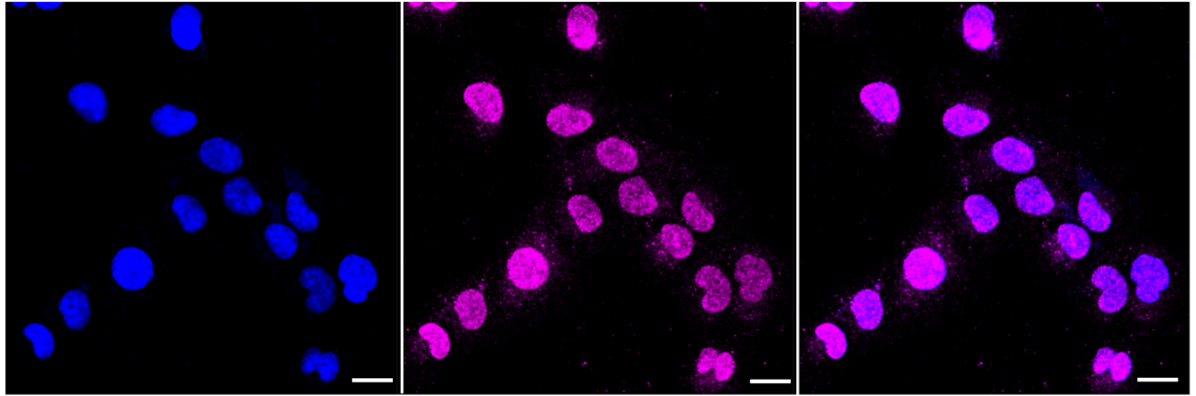
Western Blotting (WB): 1:1,000-1:5,000 Flow Cytometry (FCM): 1:2,000  
Immunocytochemistry (IC): 1:1,000

### Protocols

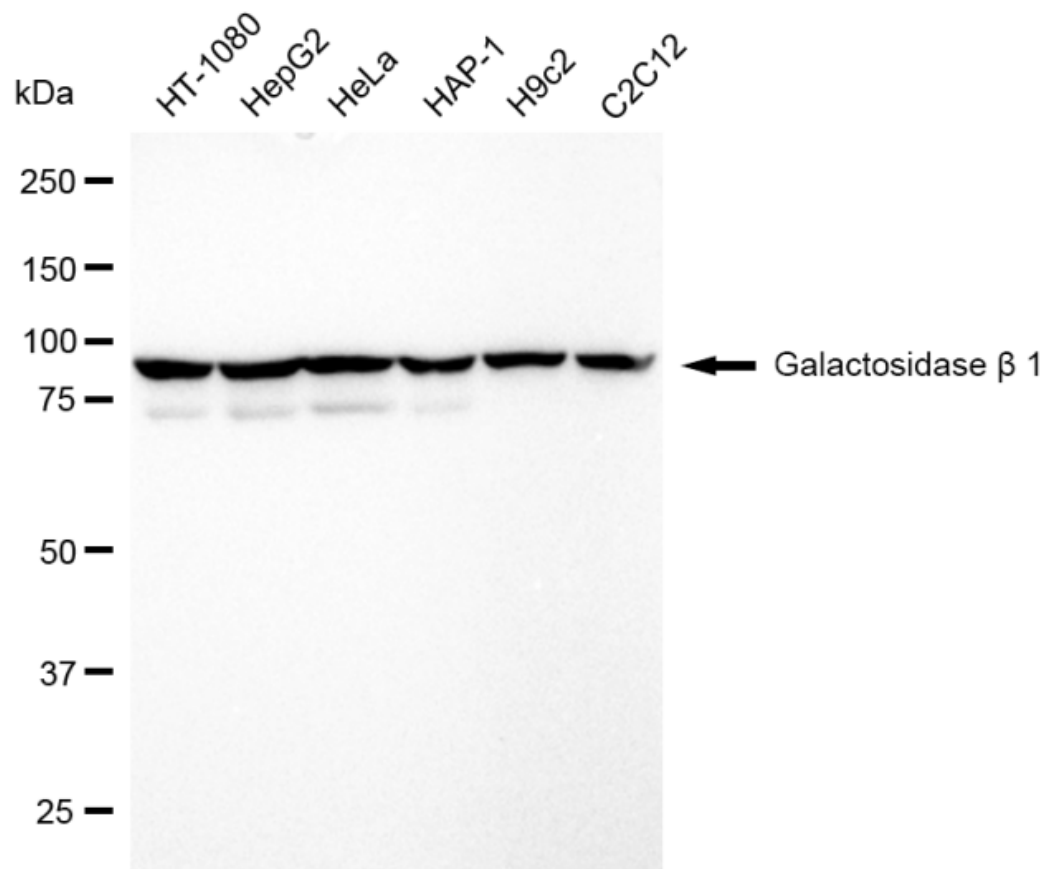
For general and specific antibody protocols please visit our website. Read all instructions before using this product.



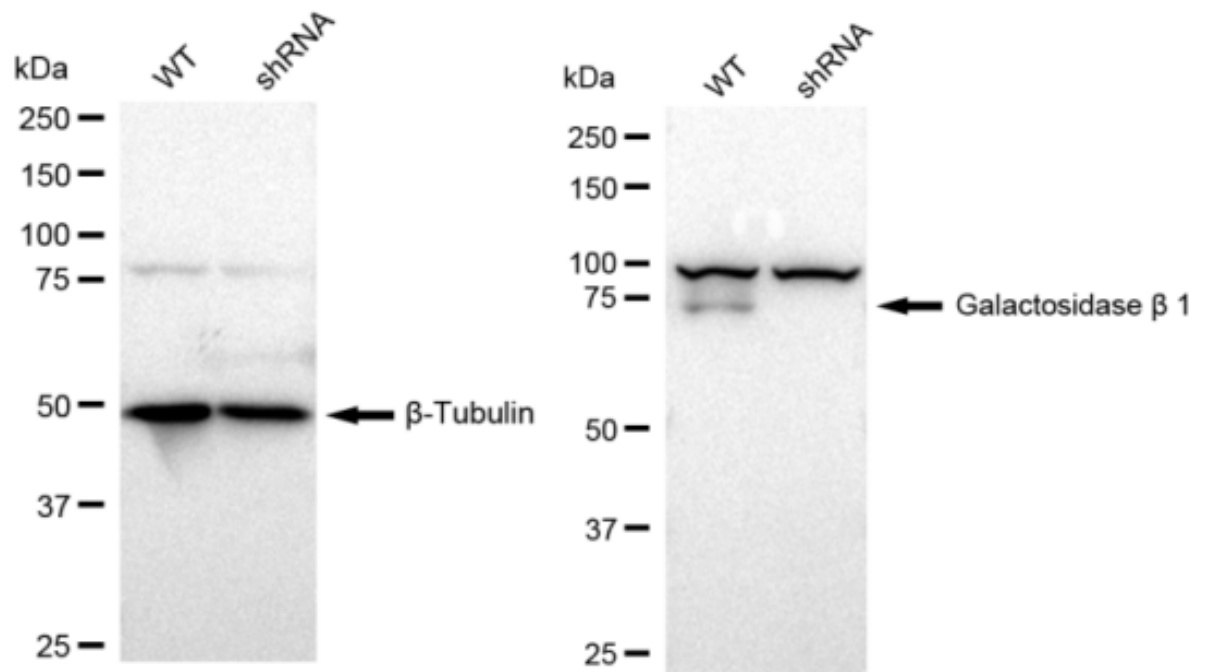
Flow cytometric analysis of Galactosidase beta 1 expression in HepG2 cells using Galactosidase beta 1 antibody 1:2,000. Green, isotype control; red, Galactosidase beta 1.



Immunocytochemical staining of HT-1080 cells with Galactosidase beta 1 antibody 1:1,000. Nuclei were stained blue with DAPI; Galactosidase beta 1 was stained magenta with Alexa Fluor® 647. Images were taken using Leica stellaris 5. Protein abundance based on laser Intensity and smart gain: Medium. Scale bar: 20  $\mu$ m.



Western blotting analysis using anti-Galactosidase beta 1 antibody 1:5,000 and HRP-conjugated goat anti-rabbit secondary antibody 1:20,000 respectively. Image was developed using FeQ™ ECL Substrate Kit .



Western blotting analysis using anti-Galactosidase beta 1 antibody 1:5,000 and HRP-conjugated goat anti-rabbit secondary antibody 1:20,000 respectively. Image was developed using FeQ™ ECL Substrate Kit .