



SunLong Biotech Co.,LTD
Tel: 0086-571- 56623320 Fax:0086-571- 56623318
E-mail:sales@sunlongbiotech.com
www.sunlongbiotech.com

[KD-Validated] Anti-Galactosidase alpha Rabbit Monoclonal Antibody

Cat No.: KD-10404

Aliases:

GLA; Galactosidase Alpha; GALA; Galactosylgalactosylglucosylceramidase GLA; Alpha-D-Galactosidase A; Alpha-Galactosidase A; EC 3.2.1.22; Melibiase; Alpha-D-Galactoside Galactohydrolase 1; Alpha-D-Galactoside Galactohydrolase; Agalsidase Alfa; Alpha-Gal A; Agalsidase; EC 3.2.1

Background:

UniProt Entry: [P06280](#);NCBI Gene Entry: [2717](#)

Application Information

Molecular Weight: Predicted, 49 kDa, observed, 46 kDa Clonality: Rabbit monoclonal antibody Clone ID: 23GB5545 Species Reactivity: Human Applications Used: Western Blotting (WB), Flow Cytometry (FCM)

Immunogen

A synthesized peptide derived from human Galactosidase alpha

Isotype

Rabbit IgG

Storage Buffer

Supplied in PBS (pH 7.4) containing 50% glycerol, and 0.02% sodium azide.

Storage

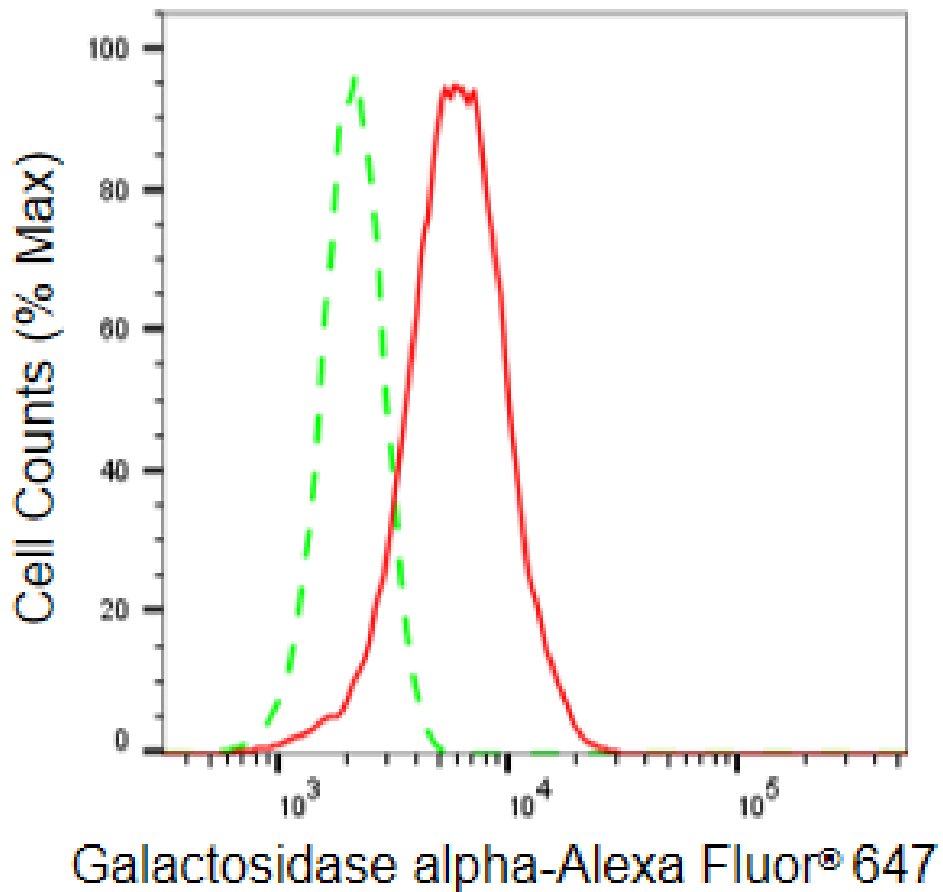
Store at -20 °C for one year.

Recommended Dilutions

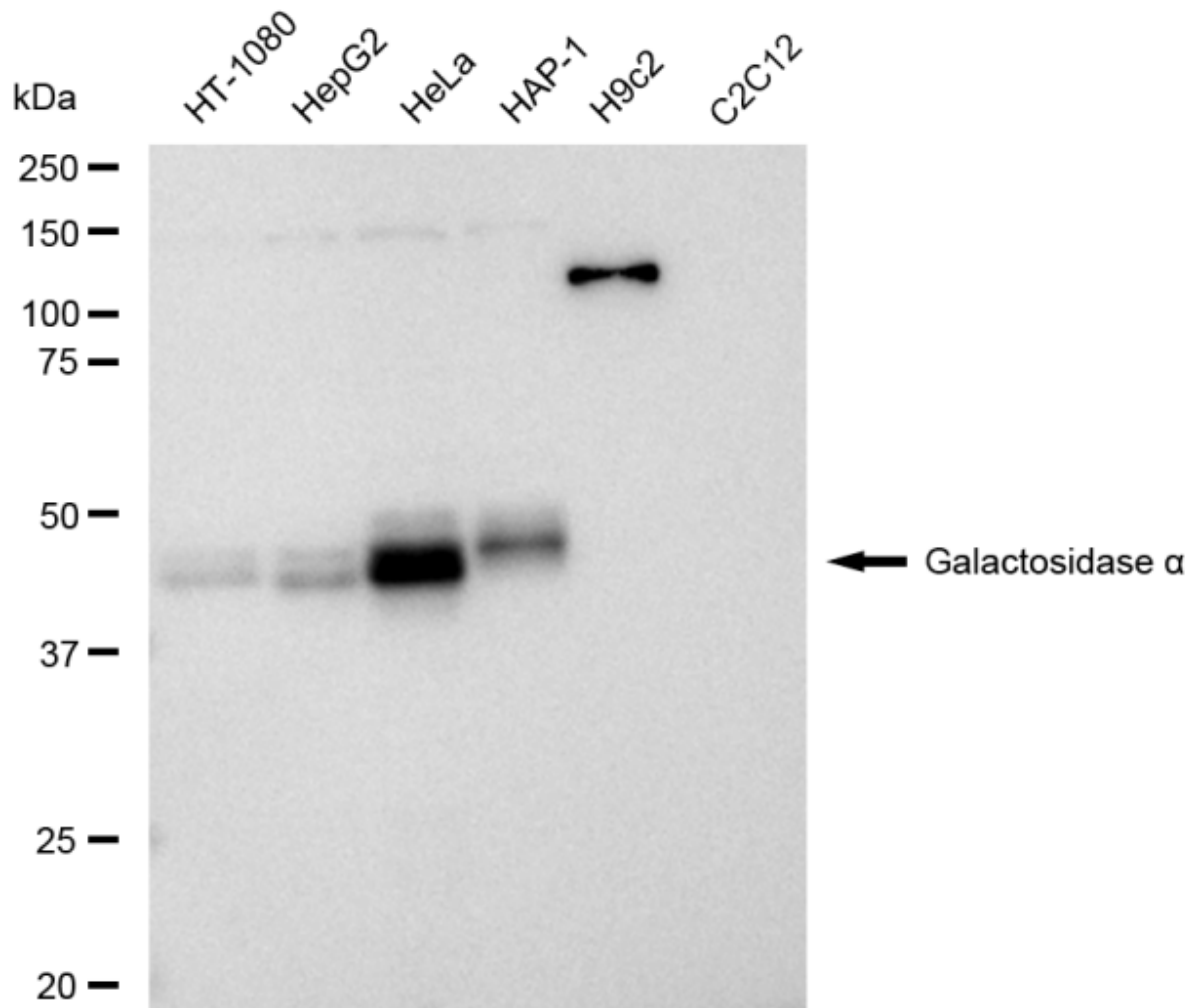
Western Blotting (WB): 1:1,000-1:5,000 Flow Cytometry (FCM): 1:2,000

Protocols

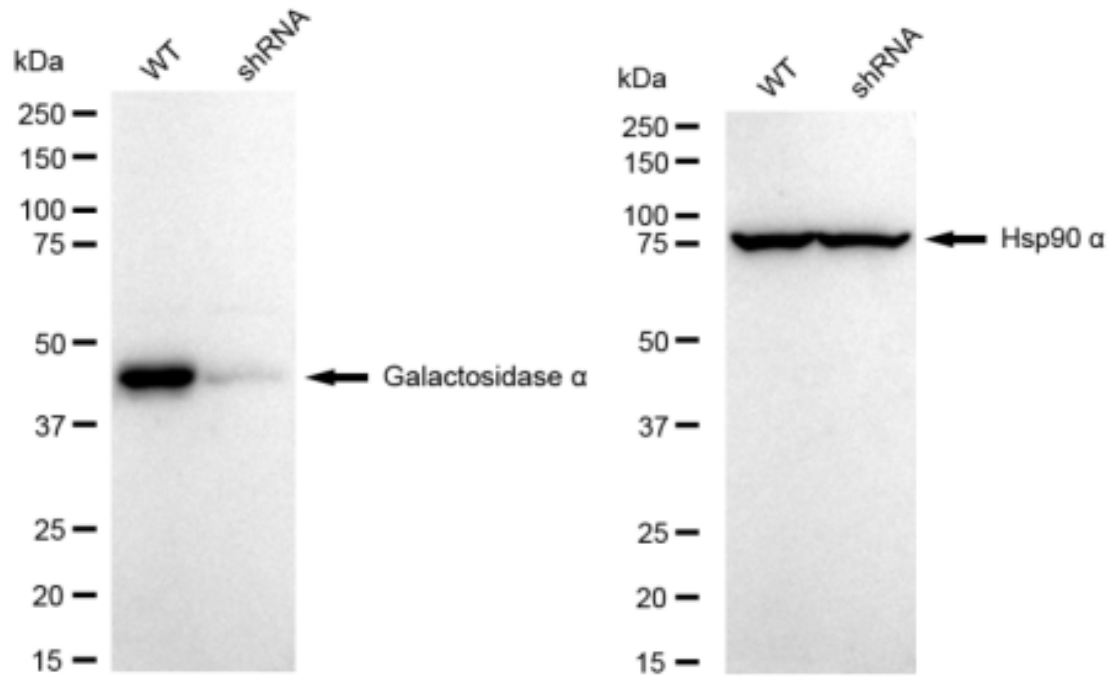
For general and specific antibody protocols please visit our website. Read all instructions before using this product.



Flow cytometric analysis of Galactosidase alpha expression in HeLa cells using Galactosidase alpha antibody 1:2,000. Green, isotype control; red, Galactosidase alpha.



Western blotting analysis using anti-Galactosidase alpha antibody 1:5,000 and HRP-conjugated goat anti-rabbit secondary antibody 1:20,000 respectively. Image was developed using FeQ™ ECL Substrate Kit .



Western blotting analysis using anti-Galactosidase alpha antibody 1:5,000 and HRP-conjugated goat anti-rabbit secondary antibody 1:20,000 respectively. Image was developed using FeQ™ ECL Substrate Kit .