



SunLong Biotech Co.,LTD  
Tel: 0086-571- 56623320 Fax:0086-571- 56623318  
E-mail:sales@sunlongbiotech.com  
www.sunlongbiotech.com

## [KD-Validated] Anti-GEMIN2 Rabbit Monoclonal Antibody

Cat No.: KD-10403

### Aliases:

GEMIN2; Gem Nuclear Organelle Associated Protein 2; SIP1; Survival Of Motor Neuron Protein Interacting Protein 1; Gem-Associated Protein; Component Of Gems; Gemin-2; Survival Of Motor Neuron Protein-Interacting Protein 1; Gem (Nuclear Organelle) Associated Protein 2; SMN Interacting Protein 1-Delta; SMN-Interacting Protein 1; SIP1-Delta

### Background:

UniProt Entry: [O14893](#);NCBI Gene Entry: [8487](#)

### Application Information

Molecular Weight: Predicted, 32 kDa, observed, 31 kDa Clonality: Rabbit monoclonal antibody Clone ID: 23GB5835 Species Reactivity: Human, Mouse, Rat Applications Tested: Western Blotting (WB), Flow Cytometry (FCM)

### Immunogen

A synthesized peptide derived from human Gemin 2

### Isotype

Rabbit IgG

### Storage Buffer

Supplied in PBS (pH 7.4) containing 50% glycerol, and 0.02% sodium azide.

**Storage**

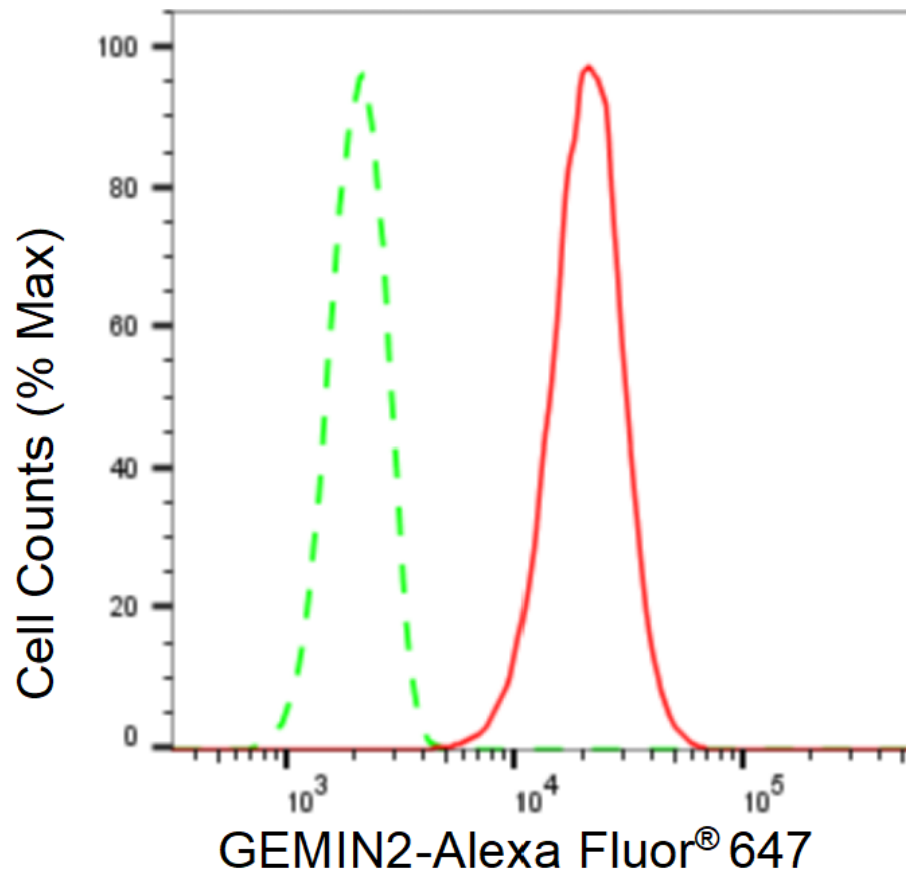
Store at -20 °C for one year.

**Recommended Dilutions**

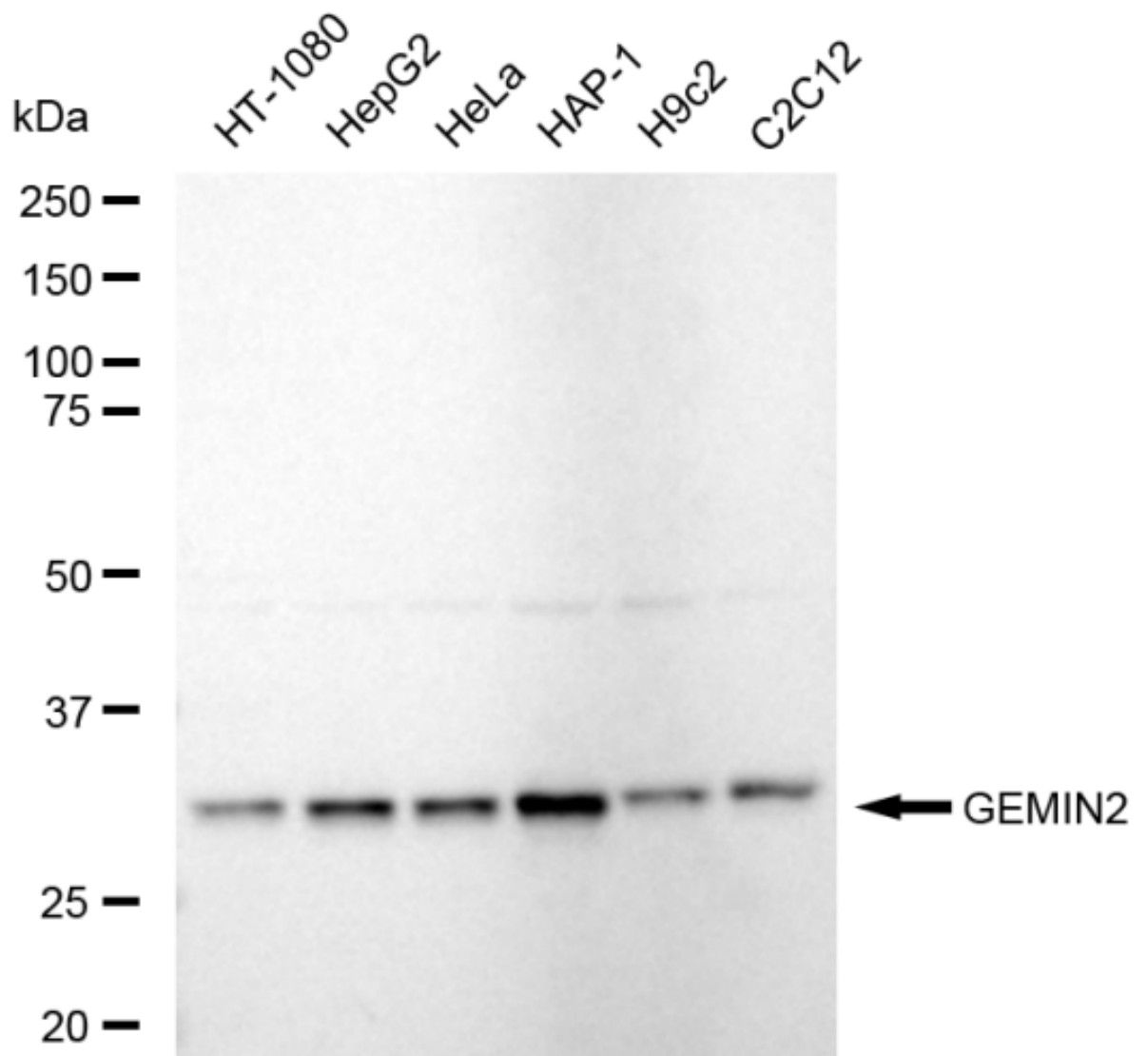
Western Blotting (WB): 1:1,000-1:5,000 Flow Cytometry (FCM): 1:2,000

**Protocols**

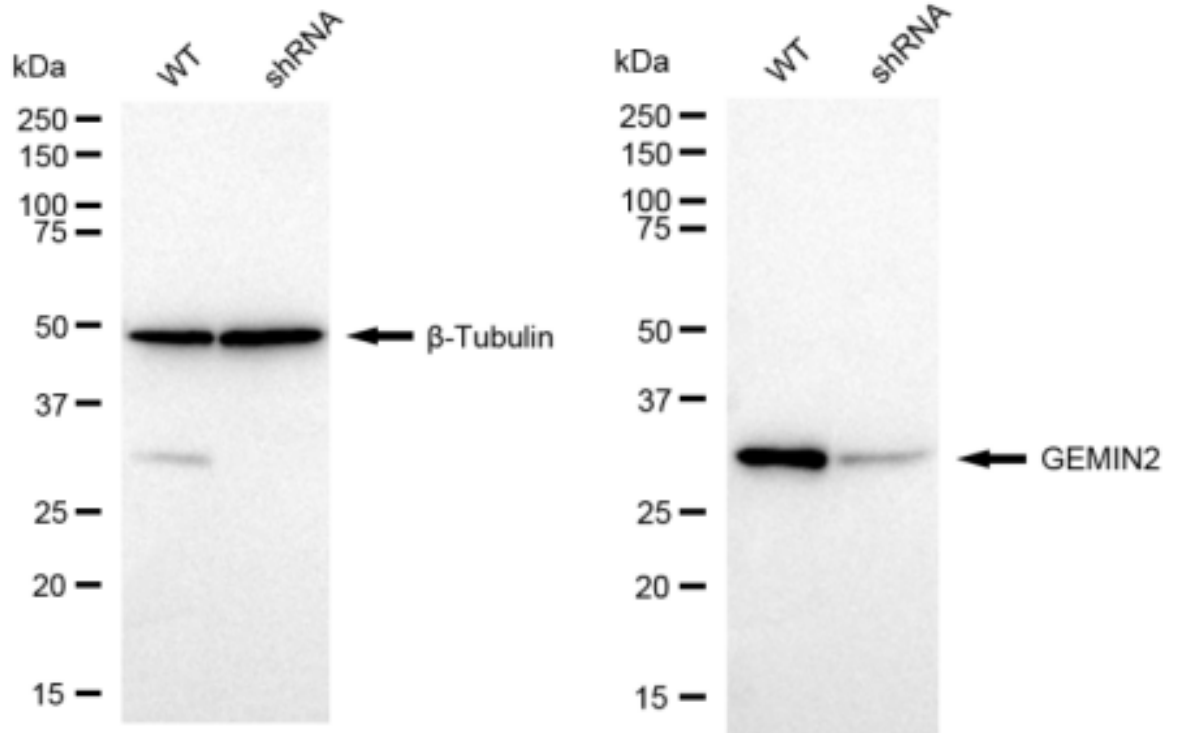
For general and specific antibody protocols please visit our website. Read all instructions before using this product.



Flow cytometric analysis of GEMIN2 expression in HepG2 cells using GEMIN2 antibody 1:2,000. Green, isotype control; red, GEMIN2.



Western blotting analysis using anti-GEMIN2 antibody 1:5,000 and HRP-conjugated goat anti-rabbit secondary antibody 1:20,000 respectively. Image was developed using FeQ™ ECL Substrate Kit .



Western blotting analysis using anti-GEMIN2 antibody 1:5,000 and HRP-conjugated goat anti-rabbit secondary antibody 1:20,000 respectively. Image was developed using FeQ™ ECL Substrate Kit .