



SunLong Biotech Co.,LTD
Tel: 0086-571- 56623320 Fax:0086-571- 56623318
E-mail:sales@sunlongbiotech.com
www.sunlongbiotech.com

[KD-Validated] Anti-GCLM Rabbit Monoclonal Antibody

Cat No.: KD-10401

Aliases:

GCLM; Glutamate-Cysteine Ligase Modifier Subunit; GLCLR; Gamma-Glutamylcysteine Synthetase Regulatory Subunit; Glutamate--Cysteine Ligase Regulatory Subunit; Gamma-ECS Regulatory Subunit; GCS Light Chain; Glutamate-Cysteine Ligase (Gamma-Glutamylcysteine Synthetase), Regulatory (30.8kD); Glutamate-Cysteine Ligase Modifier Subunit Delta2 Alternative Splicing; Glutamate-Cysteine Ligase Regulatory Protein; Glutamate-Cysteine Ligase, Modifier Subunit; Glutamate--Cysteine Ligase Modifier Subunit; Gamma-Glutamylcysteine Synthetase; GSC Light Chain

Background:

UniProt Entry: [P48507](#);NCBI Gene Entry: [2730](#)

Application Information

Molecular Weight: Predicted, 31 kDa, observed, 28 kDa Clonality: Rabbit monoclonal antibody Clone ID: 23GB5535 Species Reactivity: Human, Mouse, Rat Applications Tested: Western Blotting (WB), Flow Cytometry (FCM)

Immunogen

A synthesized peptide derived from human GCLM

Isotype

Rabbit IgG

Storage Buffer

Supplied in PBS (pH 7.4) containing 50% glycerol, and 0.02% sodium azide.

Storage

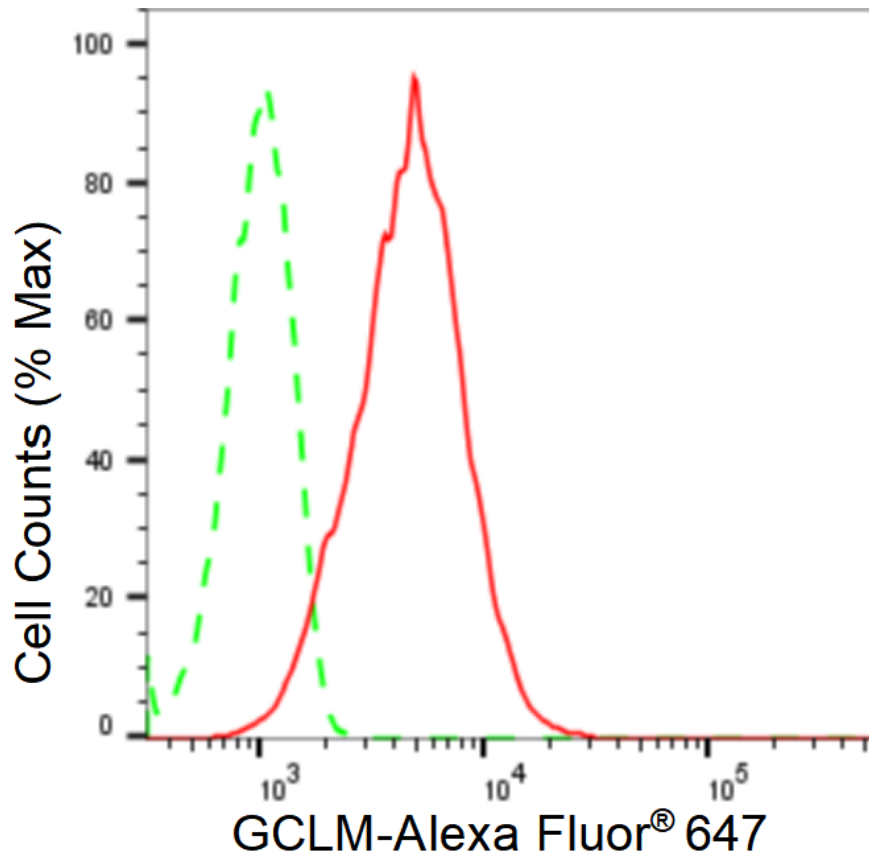
Store at -20 °C for one year.

Recommended Dilutions

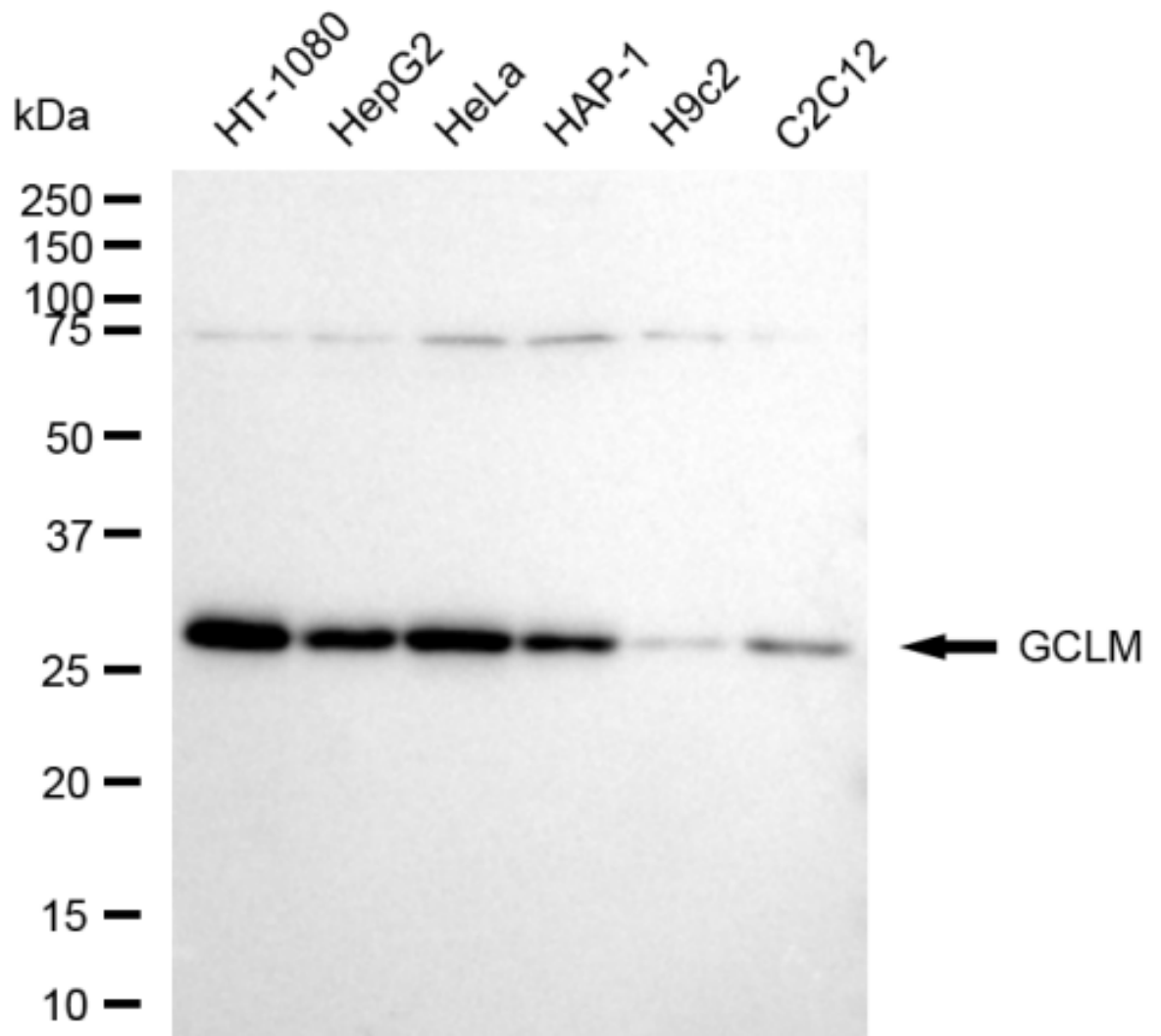
Western Blotting (WB): 1:1,000-1:5,000 Flow Cytometry (FCM): 1:2,000

Protocols

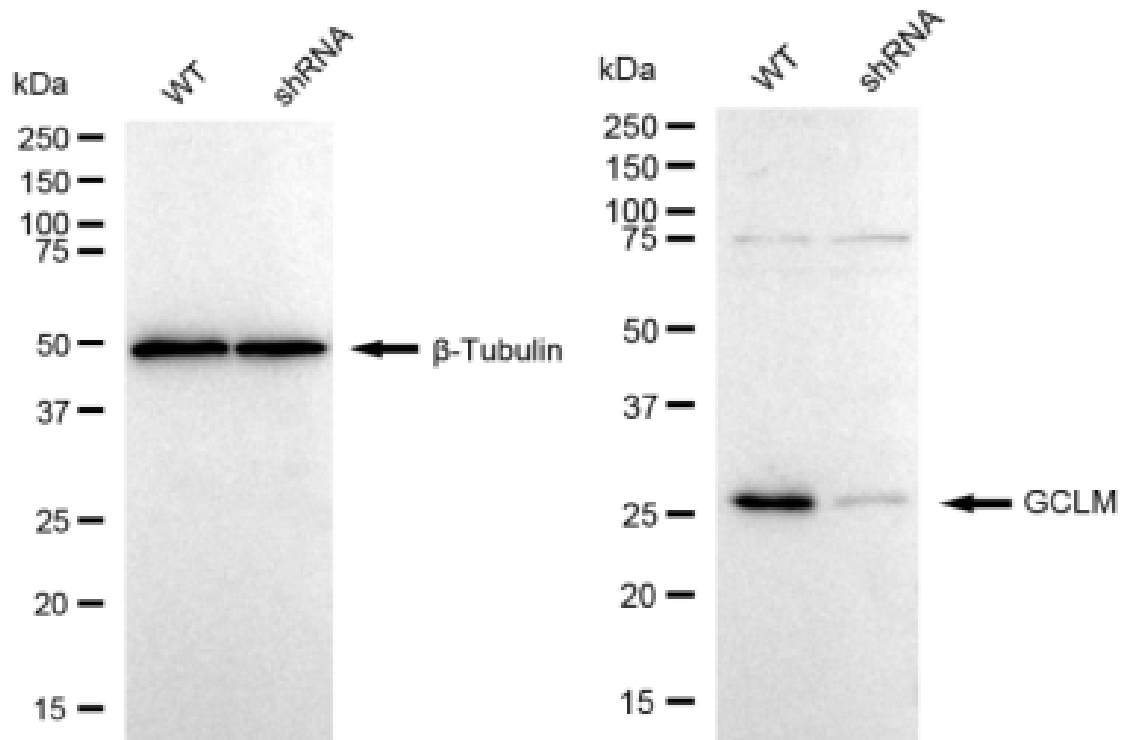
For general and specific antibody protocols please visit our website. Read all instructions before using this product.



Flow cytometric analysis of GCLM expression in HepG2 cells using GCLM antibody 1:2,000. Green, isotype control; red, GCLM.



Western blotting analysis using anti-GCLM antibody 1:5,000 and HRP-conjugated goat anti-rabbit secondary antibody 1:20,000 respectively. Image was developed using FeQ™ ECL Substrate Kit .



Western blotting analysis using anti-GCLM antibody 1:5,000 and HRP-conjugated goat anti-rabbit secondary antibody 1:20,000 respectively. Image was developed using FeQ™ ECL Substrate Kit .