



SunLong Biotech Co.,LTD
Tel: 0086-571- 56623320 Fax:0086-571- 56623318
E-mail:sales@sunlongbiotech.com
www.sunlongbiotech.com

[KD-Validated] Anti-Growth associated protein 43 Rabbit Monoclonal Antibody

Cat No.: KD-10394

Aliases:

GAP43; Growth Associated Protein 43; Axonal Membrane Protein GAP-43; Neural Phosphoprotein B-50; Neuromodulin; GAP-43; B-50; PP46; Neuron Growth-Associated Protein 43; Nerve Growth-Related Peptide GAP43; Calmodulin-Binding Protein P-57; Protein F1; Growth-Associated Protein 43; Pp46

Background:

UniProt Entry: [P17677](#);NCBI Gene Entry: [2596](#)

Application Information

Molecular Weight: Predicted, 25 kDa, observed, 48 kDa Clonality: Rabbit monoclonal antibody Clone ID: 23GB1195 Species Reactivity: Human Applications Used: Western Blotting (WB), Flow Cytometry (FCM), Immunocytochemistry (IC)

Immunogen

A synthesized peptide derived from human GAP43

Isotype

Rabbit IgG

Storage Buffer

Supplied in PBS (pH 7.4) containing 50% glycerol, and 0.02% sodium azide.

Storage

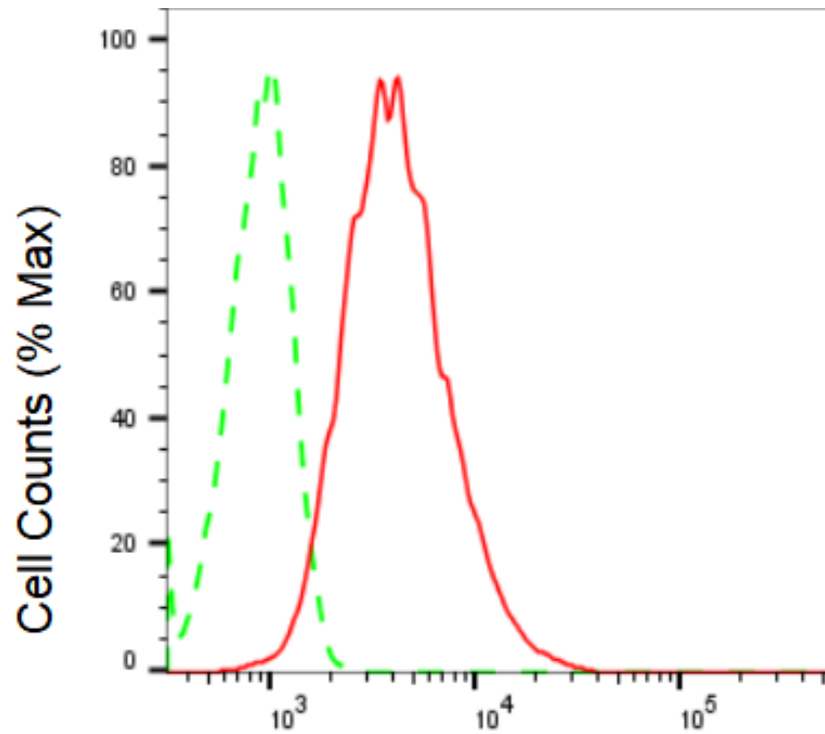
Store at -20 °C for one year.

Recommended Dilutions

Western Blotting (WB): 1:1,000-1:50,000 Flow Cytometry (FCM): 1:2,000
Immunocytochemistry (IC): 1:1,000

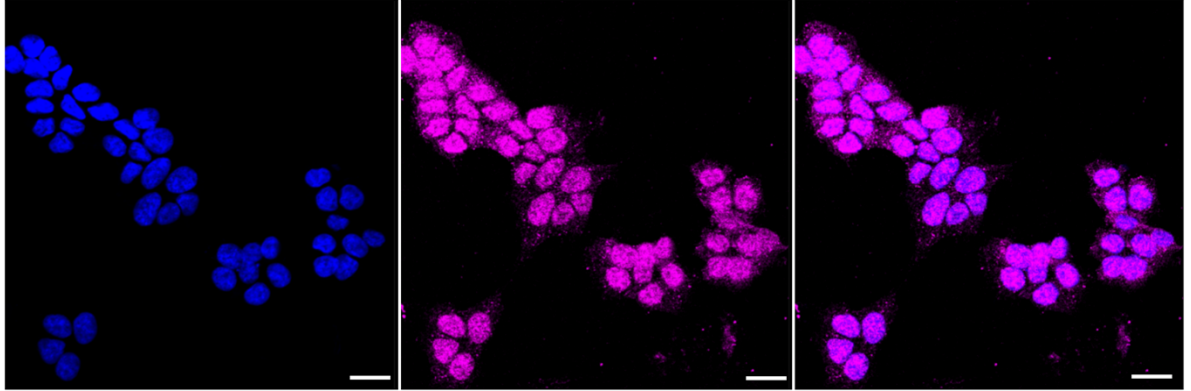
Protocols

For general and specific antibody protocols please visit our website. Read all instructions before using this product.

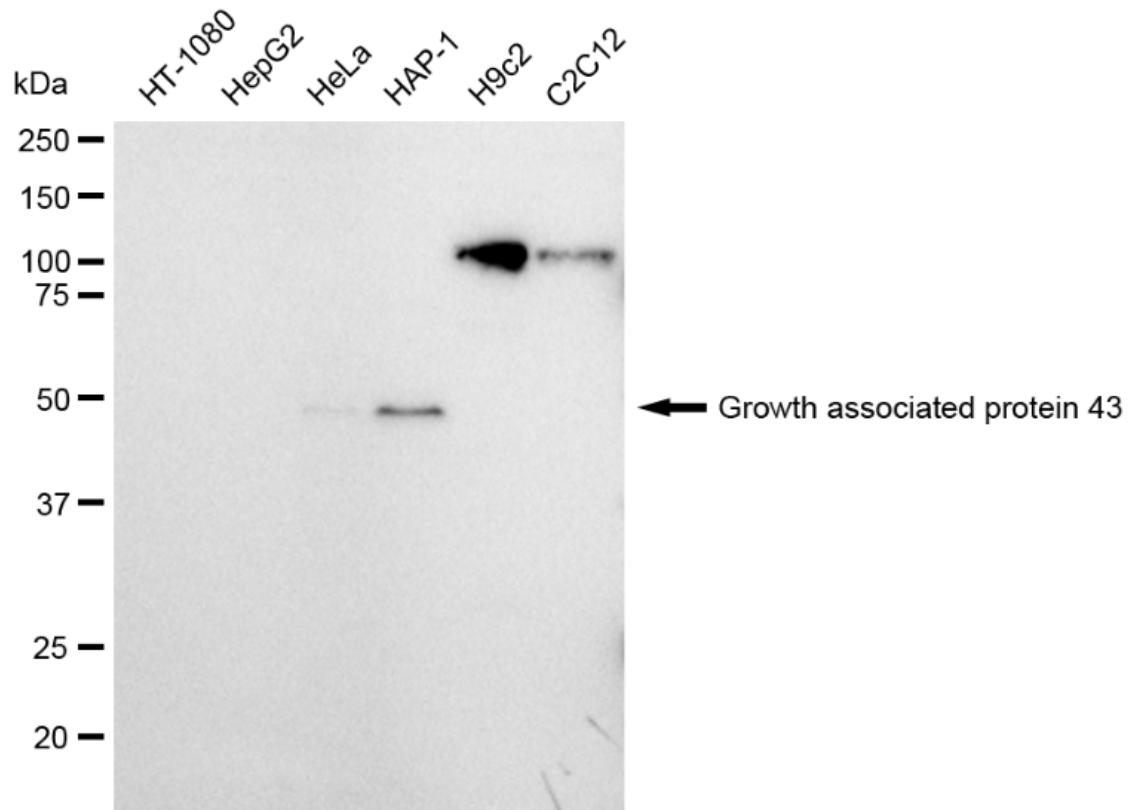


Growth associated protein 43-Alexa Fluor® 647

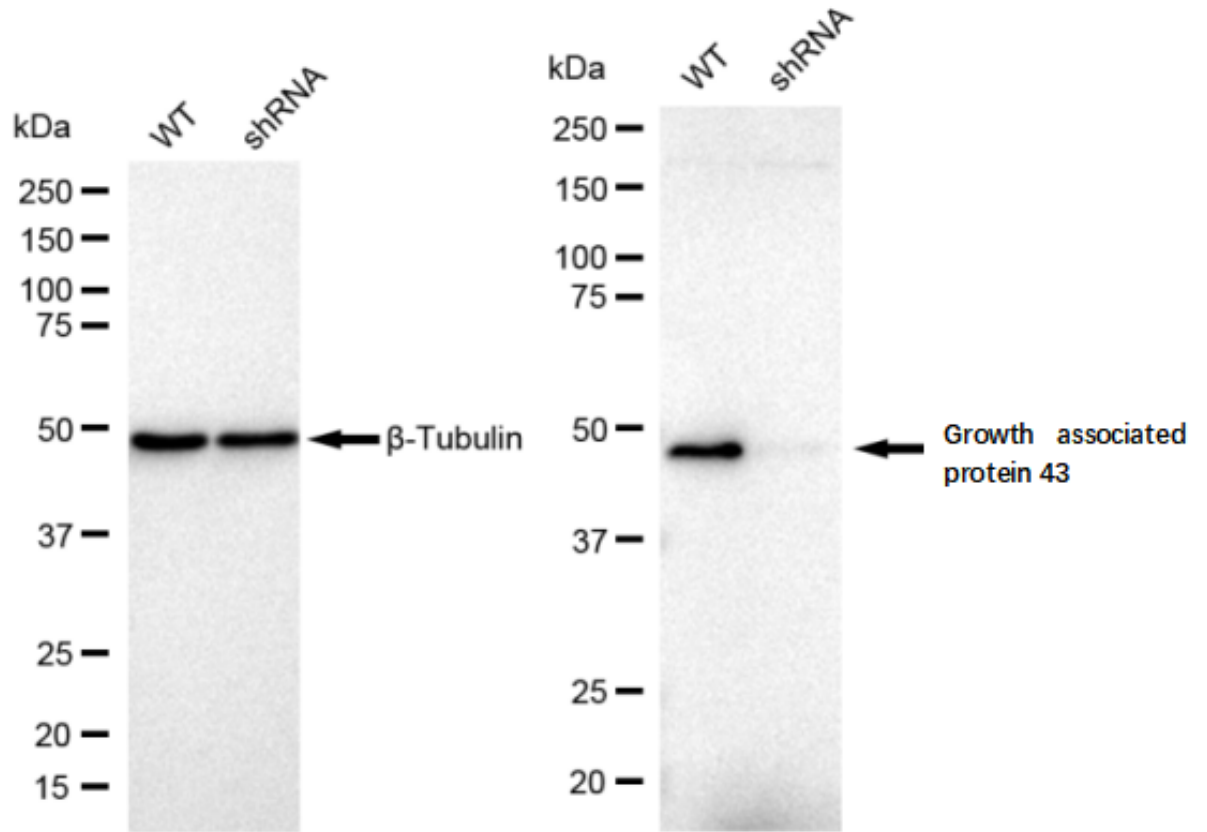
Flow cytometric analysis of Growth associated protein 43 expression in HAP-1 cells using Growth associated protein 43 antibody 1:2,000. Green, isotype control; red, Growth associated protein 43.



Immunocytochemical staining of HAP-1 cells with Growth associated protein 43 antibody 1:1,000. Nuclei were stained blue with DAPI; Growth associated protein 43 was stained magenta with Alexa Fluor® 647. Images were taken using Leica stellaris 5. Protein abundance based on laser Intensity and smart gain: Medium. Scale bar: 20 μ m.



Western blotting analysis using anti-Growth associated protein 43 antibody 1:50,000 and HRP-conjugated goat anti-rabbit secondary antibody 1:20,000 respectively. Image was developed using FeQ™ ECL Substrate Kit .



Western blotting analysis using anti-Growth associated protein 43 antibody 1:50,000 and HRP-conjugated goat anti-rabbit secondary antibody 1:20,000 respectively. Image was developed using FeQ™ ECL Substrate Kit .