



SunLong Biotech Co.,LTD  
Tel: 0086-571- 56623320 Fax:0086-571- 56623318  
E-mail:sales@sunlongbiotech.com  
www.sunlongbiotech.com

## **[KD-Validated] Anti-Glucose-6-phosphate dehydrogenase Rabbit Monoclonal Antibody**

Cat No.: KD-10393

### **Aliases:**

G6PD; Glucose-6-Phosphate Dehydrogenase; G6PD1; Glucose-6-Phosphate 1-Dehydrogenase; EC 1.1.1.49; Epididymis Secretory Sperm Binding Protein

### **Background:**

UniProt Entry: [P11413](#);NCBI Gene Entry: [2539](#)

### **Application Information**

Molecular Weight: Predicted, 59 kDa, observed, 58 kDa Clonality: Rabbit monoclonal antibody Clone ID: 23GB1795 Species Reactivity: Human Applications Used: Western Blotting (WB), Flow Cytometry (FCM), Immunocytochemistry (IC)

### **Immunogen**

A synthesized peptide derived from human G6PD

### **Isotype**

Rabbit IgG

### **Storage Buffer**

Supplied in PBS (pH 7.4) containing 50% glycerol, and 0.02% sodium azide.

### **Storage**

Store at -20 °C for one year.

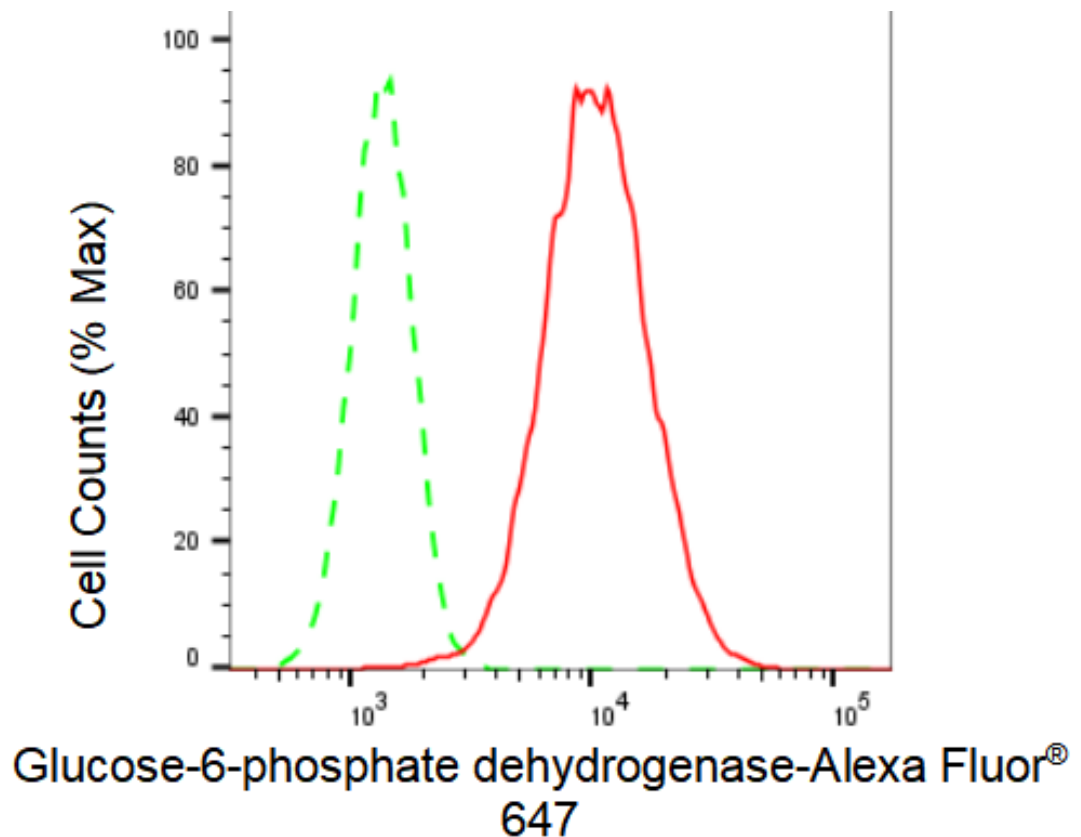
#### Recommended Dilutions

Western Blotting (WB): 1:1,000-1:5,000 Flow Cytometry (FCM): 1:2,000

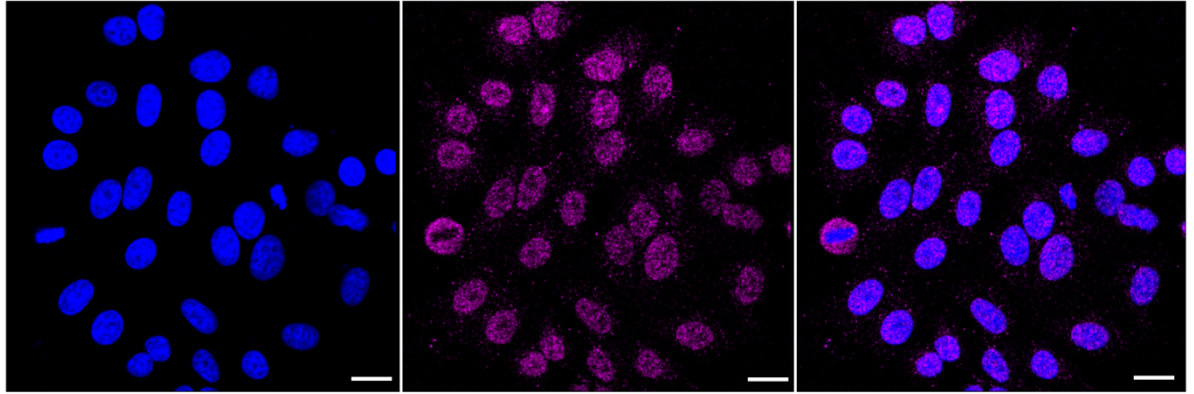
Immunocytochemistry (IC): 1:1,000

#### Protocols

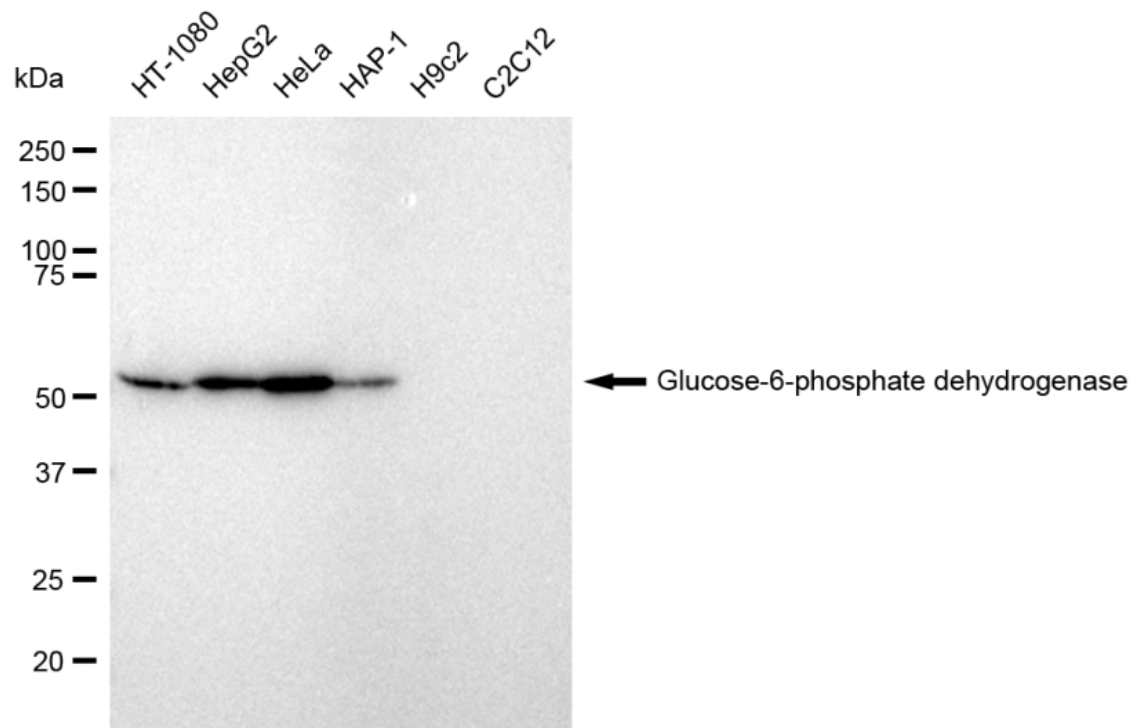
For general and specific antibody protocols please visit our website. Read all instructions before using this product.



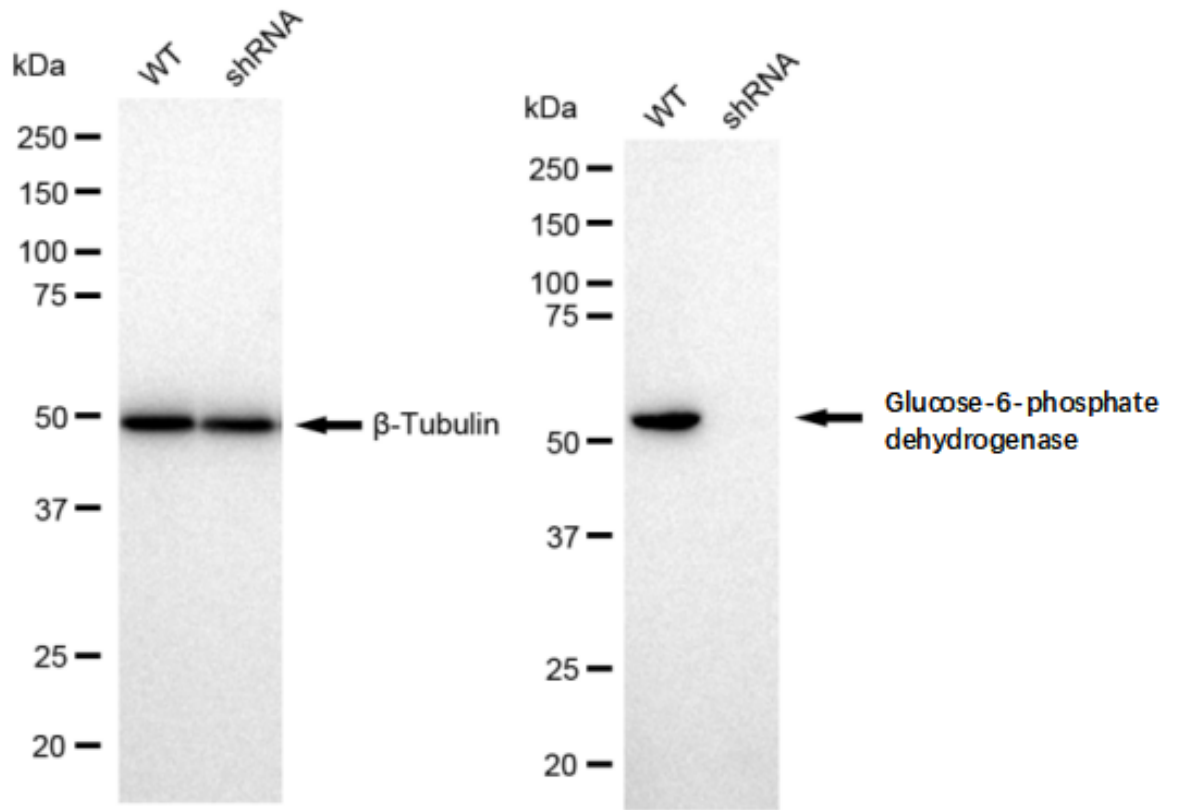
Flow cytometric analysis of Glucose-6-phosphate dehydrogenase expression in HepG2 cells using Glucose-6-phosphate dehydrogenase antibody 1:2,000. Green, isotype control; red, Glucose-6-phosphate dehydrogenase.



Immunocytochemical staining of HepG2 cells with Glucose-6-phosphate dehydrogenase antibody 1:1,000. Nuclei were stained blue with DAPI; Glucose-6-phosphate dehydrogenase was stained magenta with Alexa Fluor® 647. Images were taken using Leica stellaris 5. Protein abundance based on laser Intensity and smart gain: Very low. Scale bar: 20  $\mu$ m.



Western blotting analysis using anti-Glucose-6-phosphate dehydrogenase antibody 1:5,000 and HRP-conjugated goat anti-rabbit secondary antibody 1:20,000 respectively. Image was developed using FeQ™ ECL Substrate Kit .



Western blotting analysis using anti-Glucose-6-phosphate dehydrogenase antibody 1:5,000 and HRP-conjugated goat anti-rabbit secondary antibody 1:20,000 respectively. Image was developed using FeQ™ ECL Substrate Kit .