



SunLong Biotech Co.,LTD
Tel: 0086-571- 56623320 Fax:0086-571- 56623318
E-mail:sales@sunlongbiotech.com
www.sunlongbiotech.com

[KD-Validated] Anti-Ferritin heavy chain 1 Rabbit Monoclonal Antibody

Cat No.: KD-10388

Aliases:

FTH1; Ferritin Heavy Chain 1; FTH; PIG15; FTHL6; PLIF; FHC; Cell Proliferation-Inducing Gene 15 Protein; Proliferation-Inducing Protein 15; Placenta Immunoregulatory Factor; Ferritin, Heavy; Polypeptide 1; Ferritin Heavy Chain; Ferritin H Subunit; Apoferritin; EC 1.16.3.1; H-Ferritin; HFE5

Background:

UniProt Entry: [P02794](#);NCBI Gene Entry: [2495](#)

Application Information

Molecular Weight: Predicted, 21 kDa, observed, 15 kDa Clonality: Rabbit monoclonal antibody Clone ID: 23GB1835 Species Reactivity: Human, Mouse, Rat Applications Tested: Western Blotting (WB), Flow Cytometry (FCM), Immunocytochemistry (IC)

Immunogen

A synthesized peptide derived from human Ferritin

Isotype

Rabbit IgG

Storage Buffer

Supplied in PBS (pH 7.4) containing 50% glycerol, and 0.02% sodium azide.

Storage

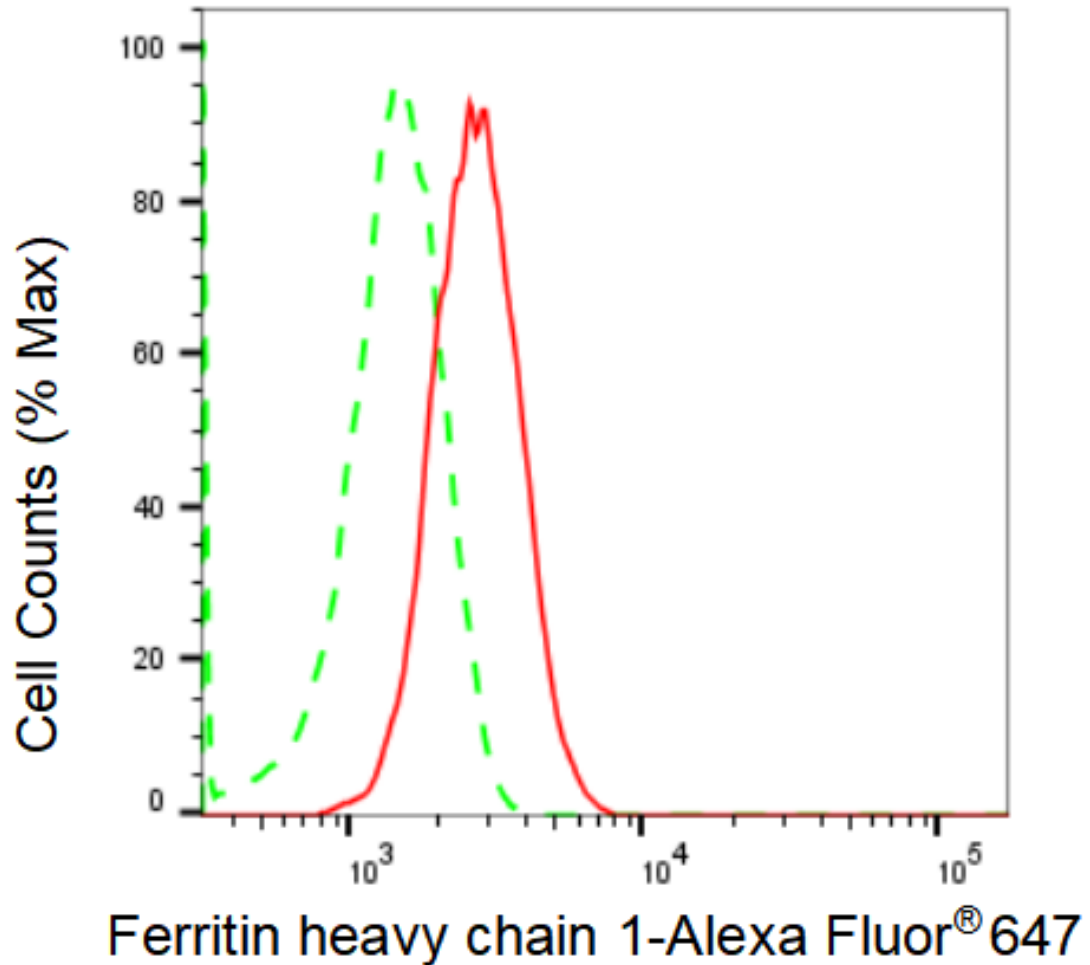
Store at -20 °C for one year.

Recommended Dilutions

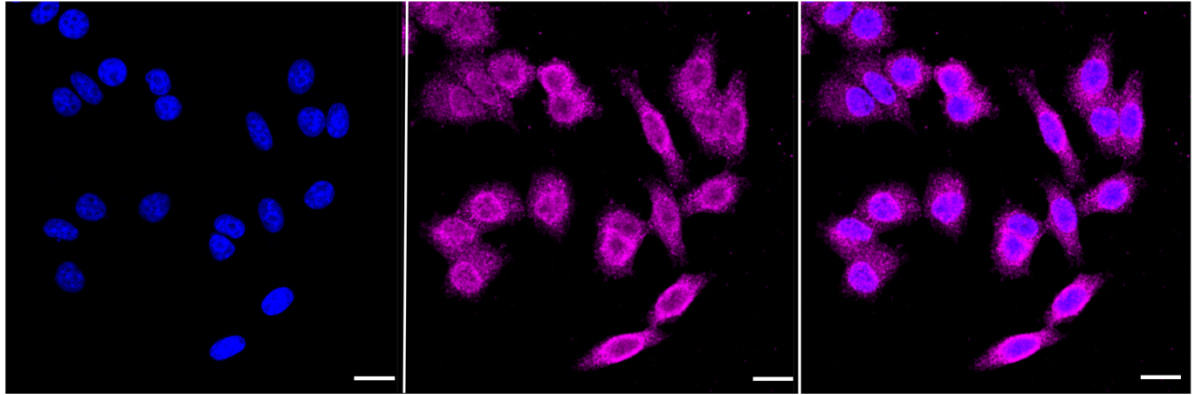
Western Blotting (WB): 1:1,000-1:5,000 Flow Cytometry (FCM): 1:2,000
Immunocytochemistry (IC): 1:1,000

Protocols

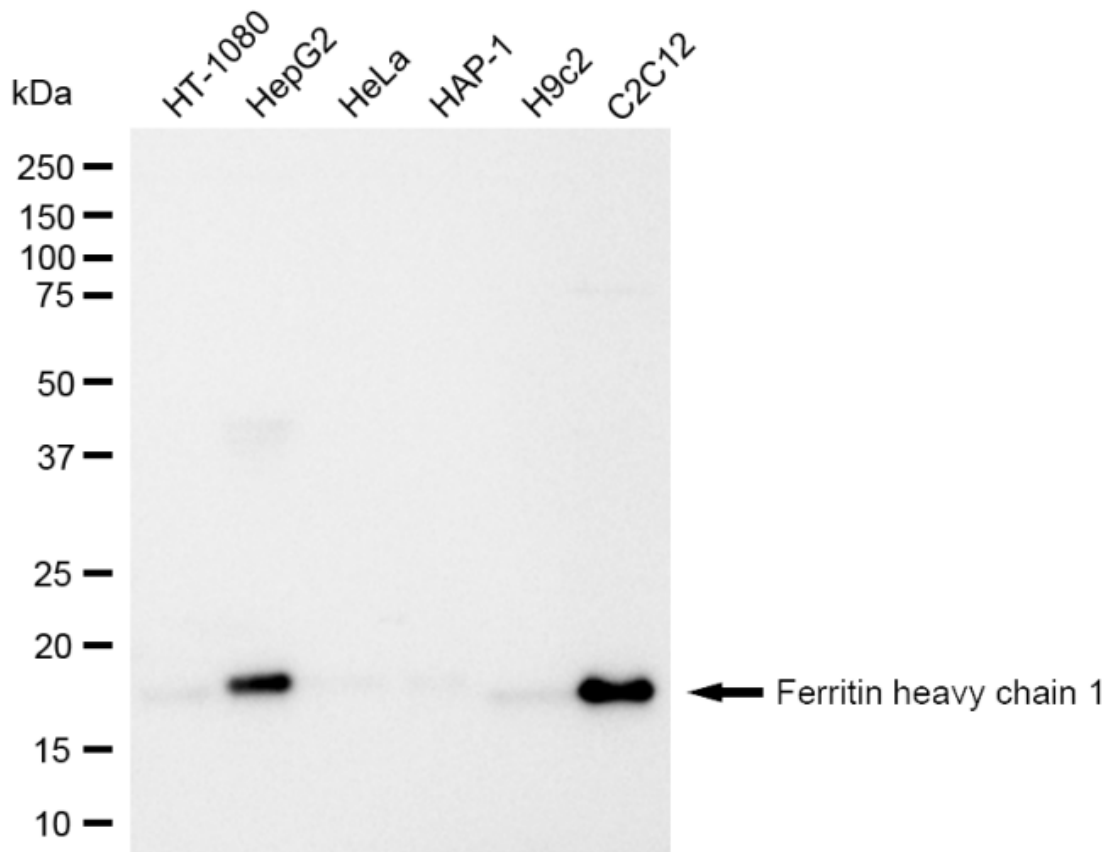
For general and specific antibody protocols please visit our website. Read all instructions before using this product.



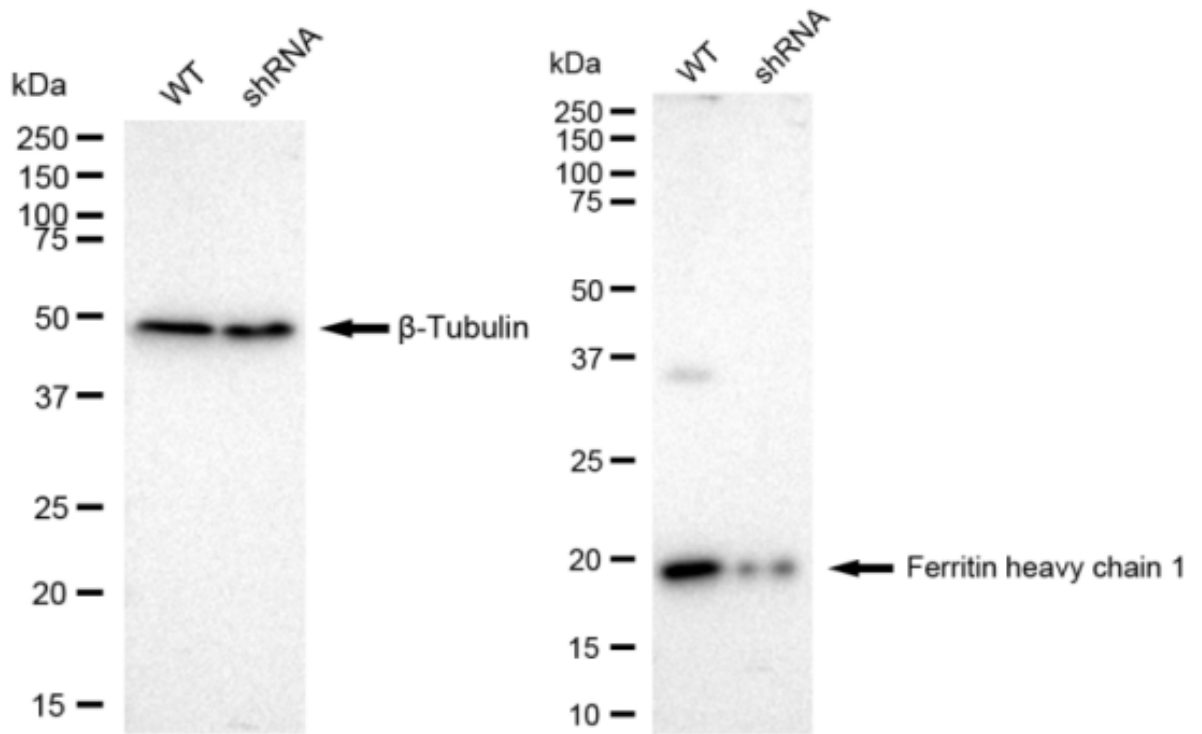
Flow cytometric analysis of Ferritin heavy chain 1 expression in HepG2 cells using Ferritin heavy chain 1 antibody 1:2,000. Green, isotype control; red, Ferritin heavy chain 1.



Immunocytochemical staining of HepG2 cells with Ferritin heavy chain 1 antibody 1:1,000. Nuclei were stained blue with DAPI; Ferritin heavy chain 1 was stained magenta with Alexa Fluor® 647. Images were taken using Leica stellaris 5. Protein abundance based on laser Intensity and smart gain: Medium. Scale bar: 20 μ m.



Western blotting analysis using anti-Ferritin heavy chain 1 antibody 1:5,000 and HRP-conjugated goat anti-rabbit secondary antibody 1:20,000 respectively. Image was developed using FeQ™ ECL Substrate Kit .



Western blotting analysis using anti-Ferritin heavy chain 1 antibody 1:5,000 and HRP-conjugated goat anti-rabbit secondary antibody 1:20,000 respectively. Image was developed using FeQ™ ECL Substrate Kit .