



SunLong Biotech Co.,LTD
Tel: 0086-571- 56623320 Fax:0086-571- 56623318
E-mail:sales@sunlongbiotech.com
www.sunlongbiotech.com

[KD-Validated] Anti-FOXO1 Rabbit Monoclonal Antibody

Cat No.: KD-10386

Aliases:

Forkhead Box O1; FOXO1A; FKH1; FKHR; Forkhead Box Protein O1A; Forkhead Box Protein O1; Forkhead, Drosophila, Homolog Of, In Rhabdomyosarcoma; Forkhead Homolog In Rhabdomyosarcoma; Forkhead In Rhabdomyosarcoma

Background:

UniProt Entry: [Q12778](#);NCBI Gene Entry: [2308](#)

Application Information

Molecular Weight: Predicted, 70 kDa, observed, 70-75 kDa Clonality: Rabbit monoclonal antibody Clone ID: 23GB850 Species Reactivity: Human, Mouse, Rat Applications Tested: Western Blotting (WB), Immunocytochemistry (IC)

Immunogen

A synthesized peptide derived from human FOXO1

Isotype

Rabbit IgG

Storage Buffer

Supplied in PBS (pH 7.4) containing 50% glycerol, and 0.02% sodium azide.

Storage

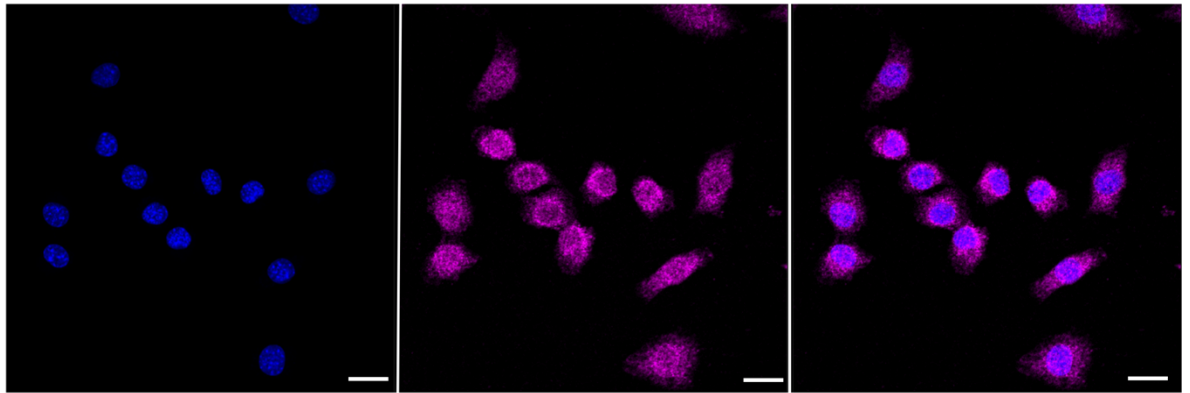
Store at -20 °C for one year.

Recommended Dilutions

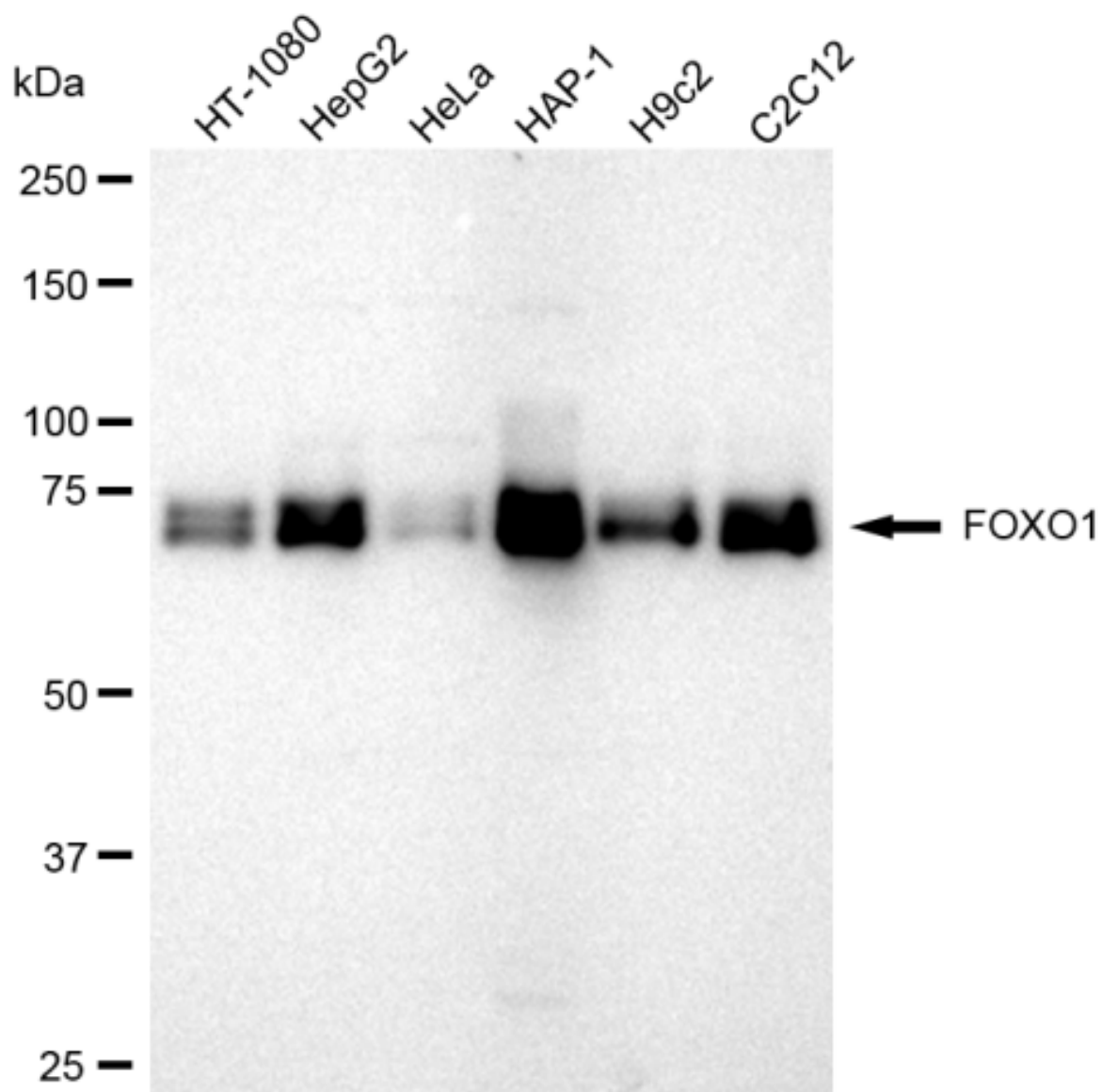
Western Blotting (WB): 1:1,000-1:5,000 Immunocytochemistry (IC): 1:1,000

Protocols

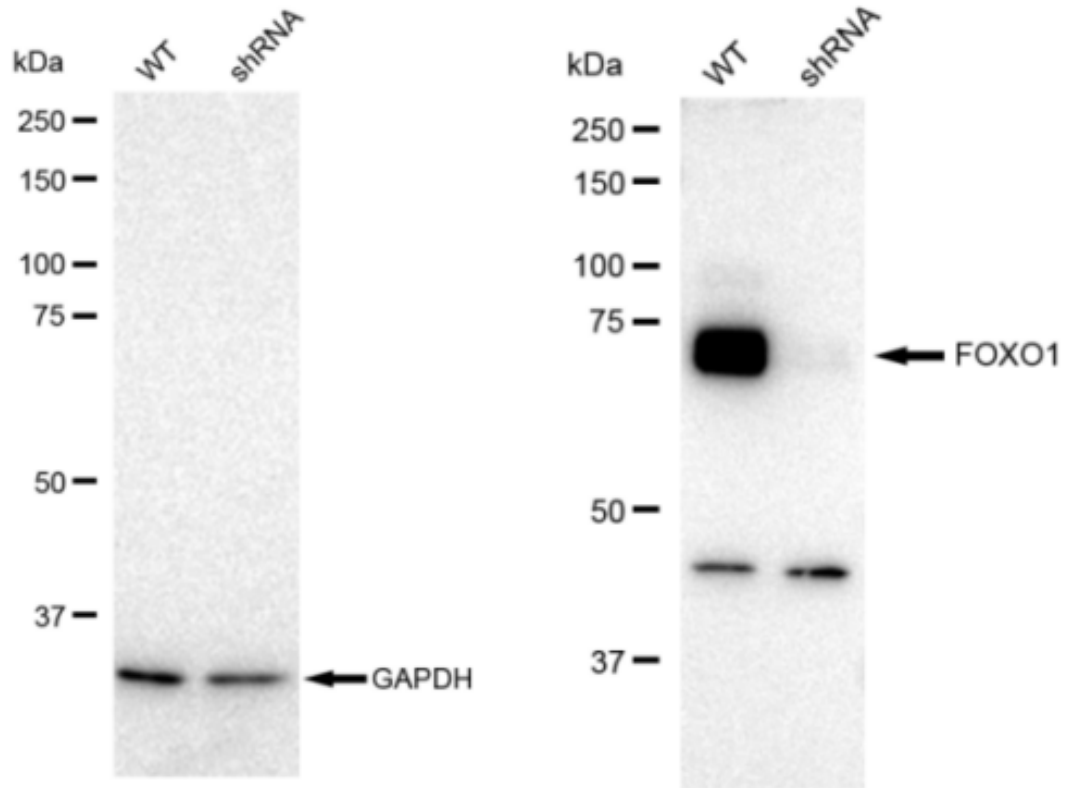
For general and specific antibody protocols please visit our website. Read all instructions before using this product.



Immunocytochemical staining of C2C12 cells with FOXO1 antibody 1:1,000. Nuclei were stained blue with DAPI; FOXO1 was stained magenta with Alexa Fluor® 647. Images were taken using Leica stellaris 5. Protein abundance based on laser Intensity and smart gain: Very low. Scale bar: 20 µm.



Western blotting analysis using anti-FOXO1 antibody . Total cell lysates (30 μ g) from various cell lines were loaded and separated by SDS-PAGE. The blot was incubated with anti-FOXO1 antibody and HRP-conjugated goat anti rabbit secondary antibody respectively. Image was developed using FeQ™ ECL Substrate Kit .



Western blotting analysis using anti-FOXO1 antibody . FOXO1 expression in wild type (WT) and FOXO1 shRNA knockdown (KD) HeLa cells with 30 μ g of total cell lysates. GAPDH serves as a loading control. The blot was incubated with anti-FOXO1 antibody and HRP-conjugated goat anti rabbit secondary antibody respectively. Image was developed using FeQ™ ECL Substrate Kit .